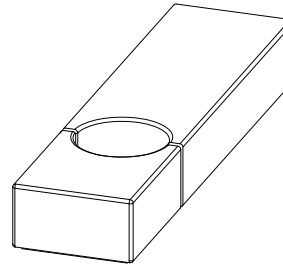


# CARACTERISTICAS

MATERIAL hormigón  
 COLOR gris granítico / beige  
 ACABADO decapado e hidrofugado  
 COLOCACION apoyado sin anclaje  
 PESO 665 kg / 1185 kg / 1700 kg  
 PALET 100x100 / 110x160 / 90x220  
 PROYECTOR Proyector empotrable RAS-Dopo  
 lampara TC-D 18W G24d2

MATERIAL *cast stone*  
 COLOUR *granite grey / beige*  
 FINISH *acid-etched and waterproofed*  
 FIXING *free-standing*  
 WEIGHT *665 kg / 1185 kg / 1700 kg*  
 PALLET *100x100 / 110x160 / 90x220*  
 LIGHT *In-ground luminaire RAS-Dopo*  
 lamp *TC-D 18W G24d2*



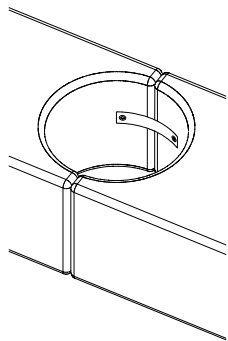
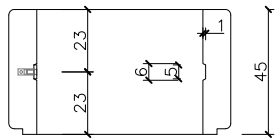
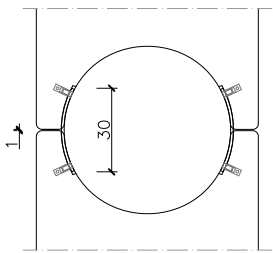
DISEÑO / DESIGN **díez + díez diseño**

## COLOCACION

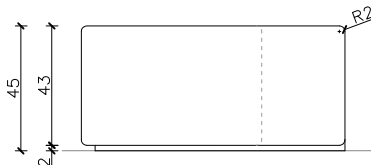
## GEOMETRIA

ESCALA 0 CM 50 CM

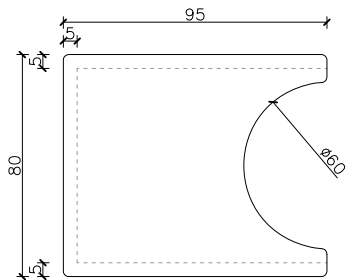
### FIJACION ENTRE BANCOS



### MODULO SENCILLO

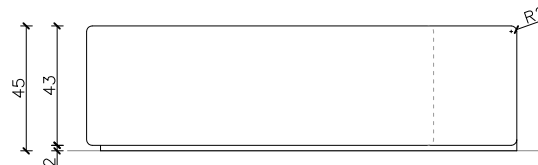


FRONTAL

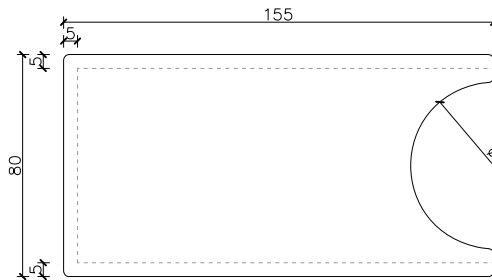


PLANTA

### MODULO DOBLE

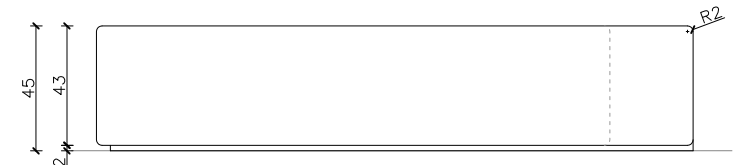


FRONTAL

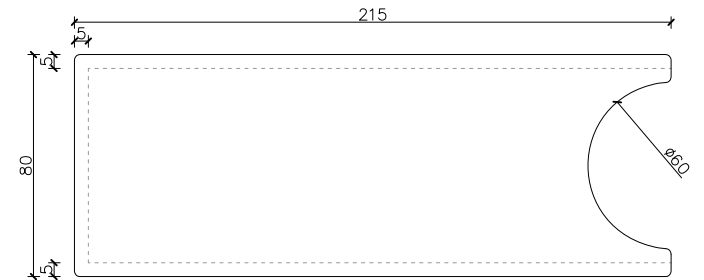


PLANTA

### MODULO TRIPLE

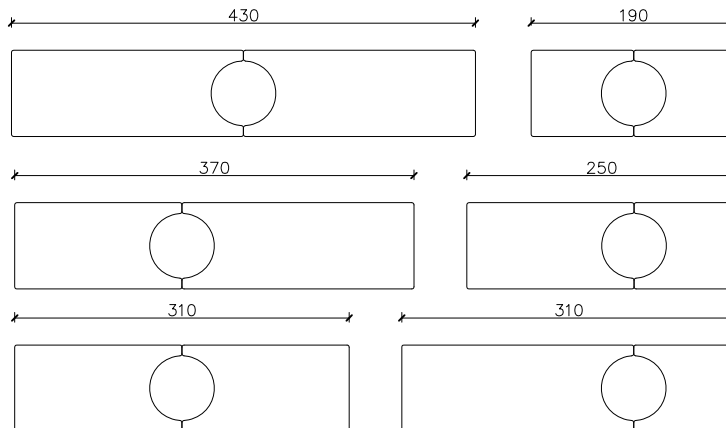


FRONTAL

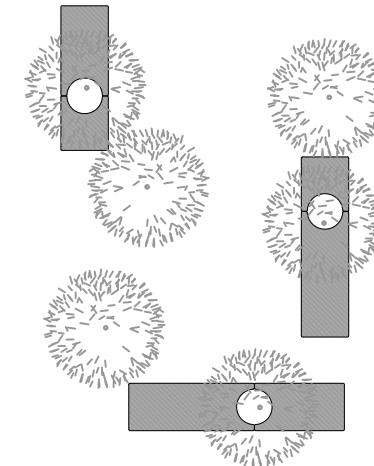


PLANTA

### AGREGACIONES



### EJEMPLO DE COLOCACIÓN



### ILUMINACIÓN OPCIONAL Proyector RAS de Dopo

