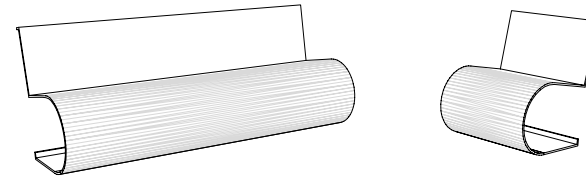


CARACTERISTICAS

MATERIAL chapa de acero Cor-Ten (e:8mm)
 COLOR óxido
 ACABADO pintado efecto Cor-Ten
 COLOC. anclado con tornillos
 PESO 55 kg / 165 kg
 PALET 75x190 (3uds-silla)
 75x190 (1ud-banco)

MATERIAL *Cor-Ten steel sheet (e:8mm)*
 COLOUR *oxide*
 FINISH *powder coated finish Cor-Ten effect*
 FIXING *anchored with screws*
 WEIGHT *55 kg / 165 kg*
 PALLET *75x190 (3units-chair)
 75x190 (1unit-bench)*

DISEÑO / DESIGN Helio Piñon



BAGDAD CAFE®

SISTEMA DE COLOCACION

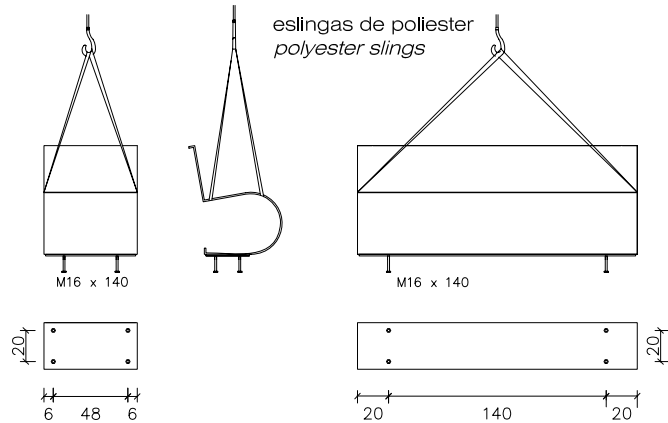
GEOMETRIA

ESCALA 0 CM 50 CM

elevación / hoisting (P=55 Kg.)

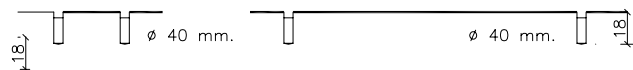
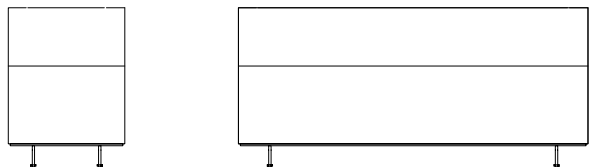
elevación / hoisting (P=165Kg.)

eslingas de poliester polyester slings



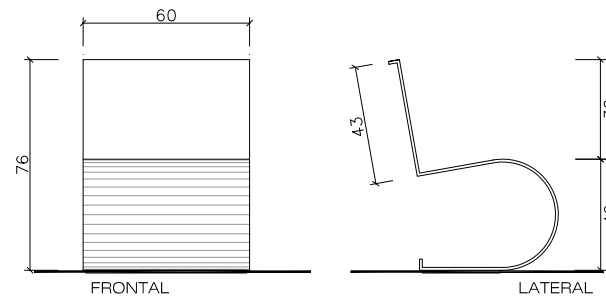
rosar los tornillos a las tuercas soldadas en la base
screw the stud bolts

taladrar el pavimento y llenar con resina o mortero rico.
drill pavement and fill with resin or fat mortar

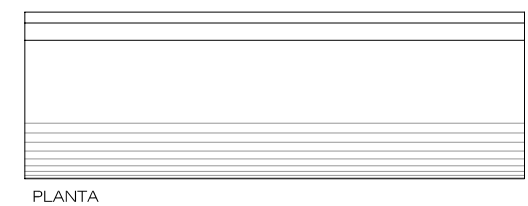
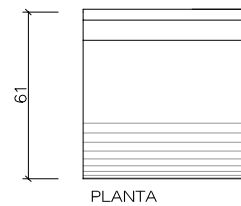
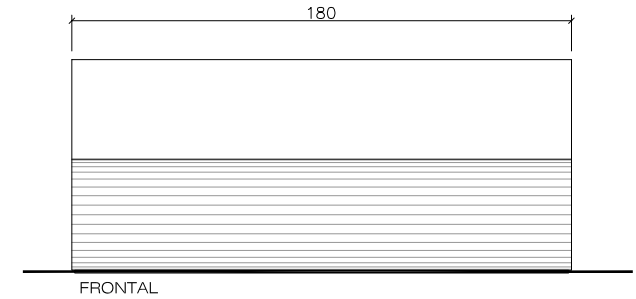


centrar, colocar el banco y rejuntar la zona de apoyo perimetral
centre and caulk the bench foot all around

SILLA BAGDAD CAFE



BANCO BAGDAD CAFE



www.escofet.com

escofet