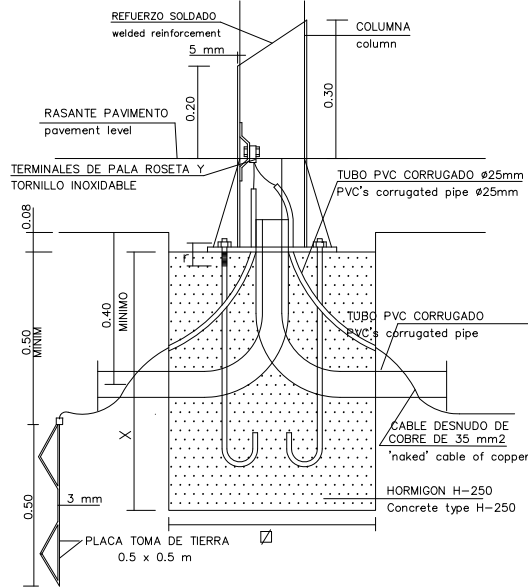


CARACTERISTICAS

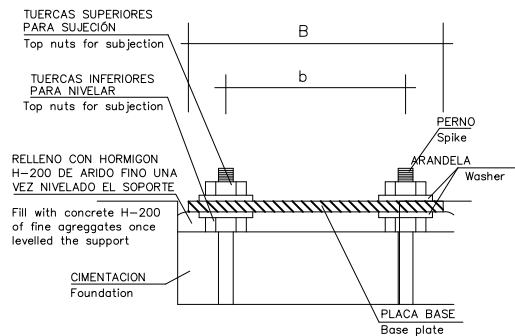
- tapered column (taper 12.5%) made of:
 - cor-ten steel (e=5mm)
 - galvanized steel (e=4mm)
 continuous seam weld in argon atmosphere
- inspection hatch and lock with rectangular tube key.
- floodlight recommended CRIPTO LED Disano 31W, 86W, 125W or 196W. colour silver or graphite, asimétric optic, 4000K, IP66, CRI80, 1-10V optional. Others: Floodlight MILOS Istanium LED / Milos HID (HM) by Simon Lighting
- F-12: 254kg / F-10: 184kg / F-9: 159kg / F-7\10: 149kg / F-7\9: 162kg / F-5: 112kg



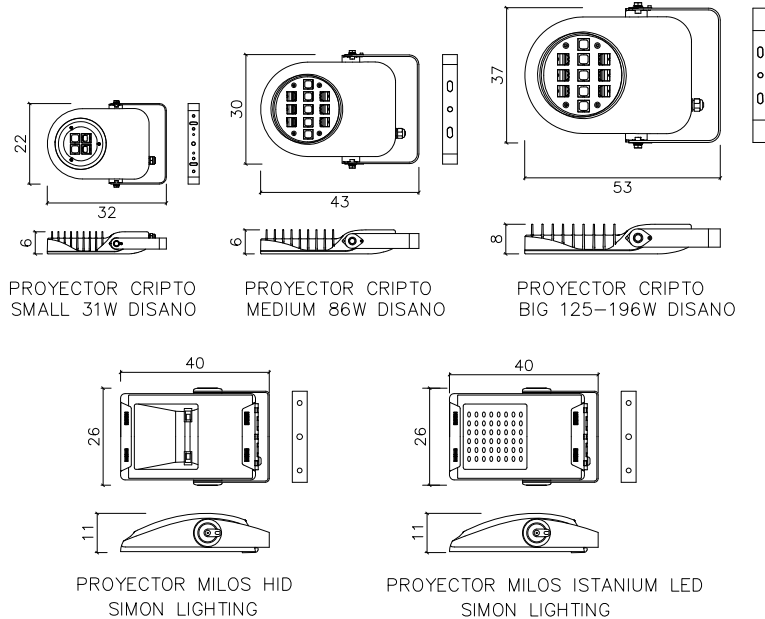
DETALLE CIMENTACIÓN COLUMNA TIPO Y TOMA DE TIERRA
Y TOMA DE TIERRA
DETAIL OF COLUMN FOUNDATION AND ELECTRICAL CONNECTION



CIMENTACIÓN Y PERNOS
FOUNDATION AND SPIKES



PROYECTORES
FLOODLIGHTS



PROYECTOR CRIPTO SMALL 31W DISANO
PROYECTOR CRIPTO MEDIUM 86W DISANO
PROYECTOR CRIPTO BIG 125-196W DISANO

PROYECTOR MILOS HID SIMON LIGHTING
PROYECTOR MILOS ISTANIUM LED SIMON LIGHTING

	FUL-12	FUL-10	FUL-9	FUL-7\10	FUL-7\9	FUL-5
COLUMNAS columns	H=12 m	H=10 m	H=9 m	H=7 m	H=7 m	H=5 m
ø SUP	88 mm	77 mm	77 mm	77 mm	77 mm	77 mm
ø INF	240 mm	200 mm	200 mm	165 mm	200 mm	142 mm
PUERTAS REGISTRO inspection hatch	2	2	2	2	2	1
P	400 mm	400 mm	400 mm	400 mm	400 mm	300 mm
M	100 mm	100 mm	100 mm	100 mm	100 mm	85 mm
CIMENTACIÓN foundation						
(dim.aprox.) X	120 cm	100 cm	80 cm	80 cm	80 cm	80 cm
ø	90 cm	80 cm	80 cm	80 cm	80 cm	80 cm
PLACA BASE base plate						
pernos(4)/spikes	M-24x800	M-22x700	M-22x700	M-22x700	M-22x700	M-22x700
cartelas/console	160mm(8)	150mm(4)	150mm(4)	150mm(4)	150mm(4)	150mm(4)
ø placa B/plate B	500 mm	400 mm	400 mm	360 mm	400 mm	360 mm
ø centros b/centers	350 mm	300 mm	300 mm	260 mm	300 mm	260 mm
E	15 mm	12 mm	12 mm	12 mm	12 mm	10 mm
PROYECTORES projectors	4	3 6 5	3	3	3	2
n° rótulas	4	3 6 5	3	3	3	2

