

TOYO ITO & ASSOCIATES, ARCHITECTS  
TOYO ITO ARQUITECTOS, ASOCIADOS EN ESPAÑA, S.L.  
C/Dolors Aleu, 19-21 3r pte.  
08908 L'Hospitalet de Llobregat, Barcelona SPAIN  
Tel: 0034 93 289 6140 Fax: 0034 93 289 6142

FIRA 2000 S.A.



THIS DRAWING, AS AN INSTRUMENT OF SERVICE, IS AND SHALL REMAIN  
PROPERTY OF TOYO ITO & ASSOCIATES, ARCHITECTS. THE DRAWING  
SHALL NOT BE REPRODUCED, PUBLISHED, USED ON OTHER PROJECTS,  
USED FOR ADDITIONS, OR USED IN CONNECTION OF THIS PROJECT BY  
OTHERS EXCEPT BY AGREEMENT IN WRITING.  
Copyright 2008 TOYO ITO & ASSOCIATES, ARCHITECTS

PROJECT:  
DRAWING TITLE:

REMDELACIÓN URBANIZACIÓN FOC 2-3  
PLANO SITUACIÓN 2

A3 SCALE  
1/3500

DATE  
ENERO\_2012

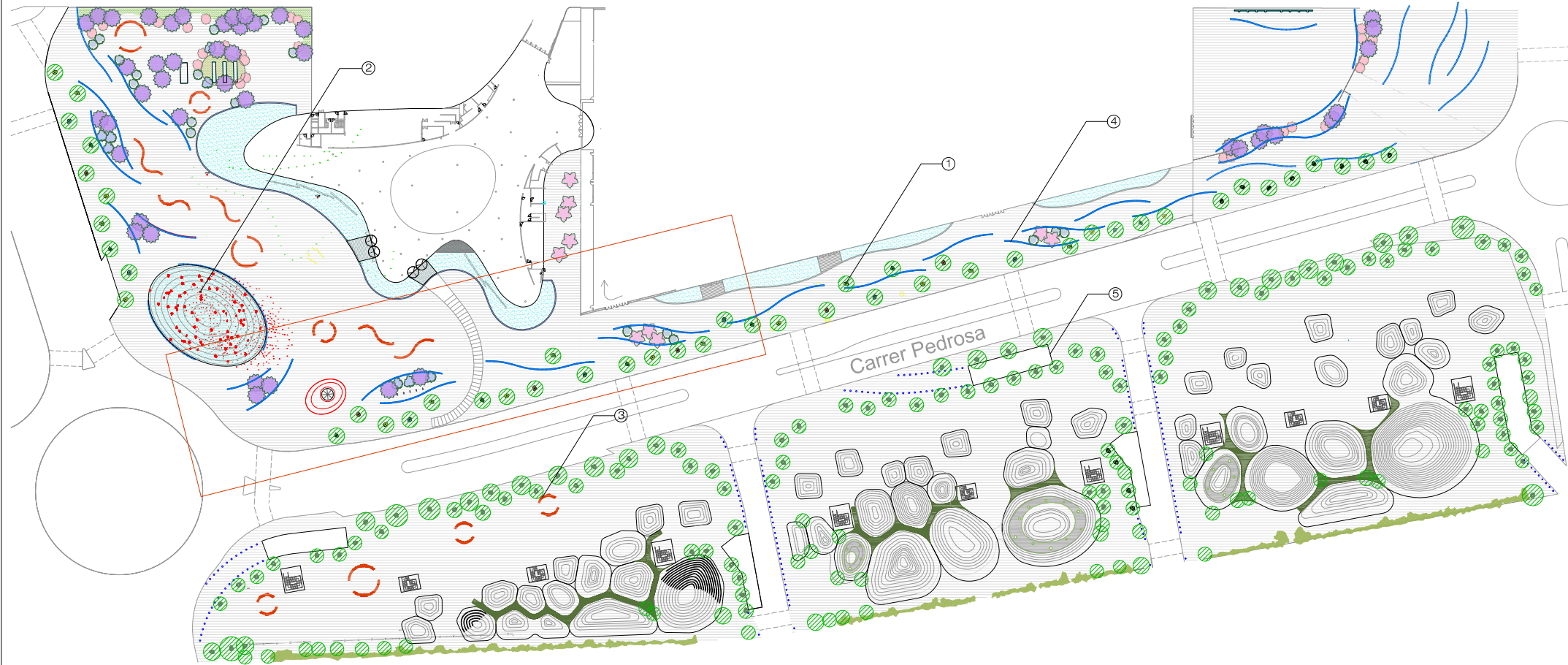
DRAWING NUMBER  
UFOC\_FIRA\_A\_SITUACIÓN

**MEMORIA.** El concurso internacional convocado para la ampliación del recinto de Fira de Barcelona, ganado por el arquitecto Toyo Ito, ha supuesto para Escofet una gran oportunidad para el desarrollo de nuevos elementos de paisaje que conjugan la naturaleza con la arquitectura de los pabellones. La luz y el agua como elementos vivos, la búsqueda de la ingravidez, constantes en la obra del arquitecto, se materializan en los **alcorques** (1), metáfora líquida de gran plasticidad, el conjunto de **bancas ola** (4) que emergen y se sumergen en el pavimento, los **surtidores florales** (2) en la fuente monumental y los bancos **Naguisa** (3), instalados enfrente del acceso principal del recinto Ferial, en clara alegoría a las curvas espumosas que el mar deja sobre la arena.



OBRA
Fira de Barcelona, Gran Via
LUGAR
Barcelona, España
AUTORES
Toyo Ito
CONSTRUCTORA
-
AÑO EJECUCION
2004

PLANTA 0 10 E: 1/350

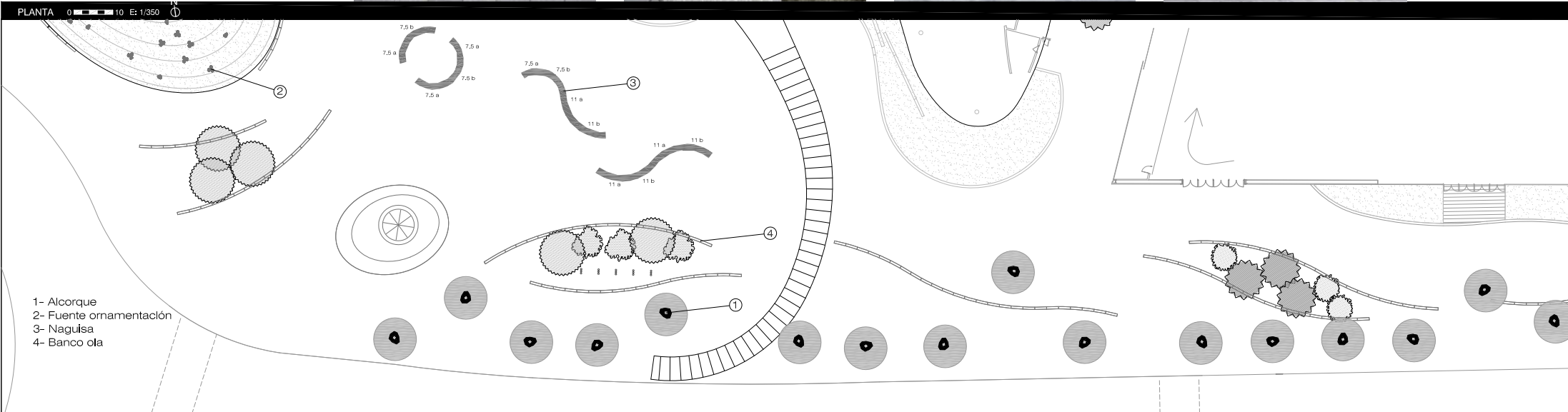


- 1- Alcorque
- 2- Fuente ornamentación
- 3- Naguisa
- 4- Banco ola
- 5- Barandilla aparcamiento





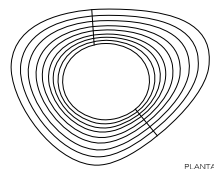
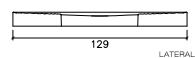
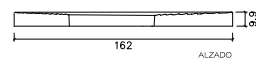
OBRA
Fira de Barcelona, Gran Via
LUGAR
Barcelona, España
AUTORES
Toyo Ito
CONSTRUCTORA
-
AÑO EJECUCION
2004



- 1- Alcorque
- 2- Fuente ornamentación
- 3- Nalgusa
- 4- Banco ola

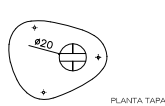
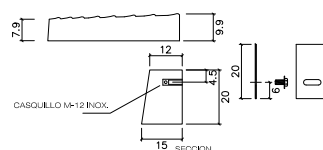
#### ELEMENTOS ESPECIALES:

ALCORQUE E: 1/50

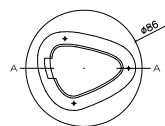


hormigón armado  
gris granítico  
decapado  
40 uds. + 60 en fase posterior

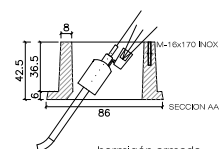
SISTEMA DE COLOCACION



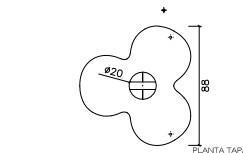
PLANTA TAPA



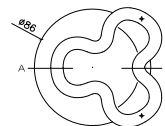
PLANTA



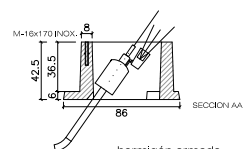
hormigón armado  
gris granítico  
decapado  
22 uds.



PLANTA TAPA



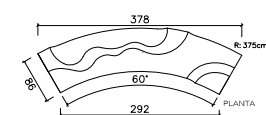
PLANTA



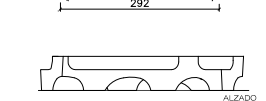
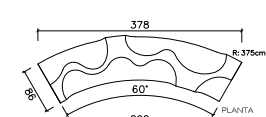
hormigón armado  
gris granítico  
decapado  
51 uds.

#### ELEMENTOS STANDARD:

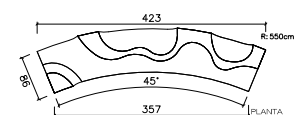
NAGUISA 7500 a



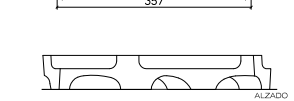
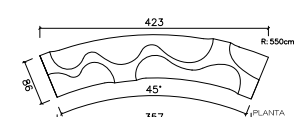
NAGUISA 7500 b



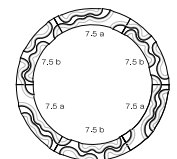
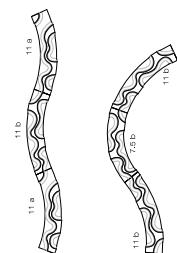
NAGUISA 11000 a



NAGUISA 11000 b



hormigón armado  
decapado e hidrofugado  
pulido superficie superior  
75a 17 uds. 75b 16 uds.  
11a 14 uds. 11b 14 uds.



OBRA
Fira de Barcelona. Gran Via
LUGAR
Barcelona. España
AUTORES
Toyo Ito
CONSTRUCTORA
-
AÑO EJECUCION
2004

TIPO E 53 uds. 210 kg. gris granítico  
 TIPO D 45 uds. 125 kg. dacapado suave  
 TIPO L 68 uds. 90 kg. junta de 2mm, entre piezas  
 chafín perimetral de 4x4mm, en parte superior

The image contains three sets of technical drawings for stone cladding types E, D, and L. Each set includes a front view (planta), a side view (alzado), and a cross-section (sección AA).

- TIPO E:**
  - planta:** A rectangular panel with a width of 30 and a height of 30. It features a central horizontal line labeled "casquillo M-16 inox." and a small circle labeled "Ø 30,000". The overall height is 149.8.
  - alzado:** A side view showing a thickness of 6 and a height of 6.
  - sección AA:** A cross-section showing a trapezoidal shape with a top width of 30, a bottom width of 15, and a height of 15. It includes a small circle labeled "Ø 30,000".
- TIPO D:**
  - planta:** A rectangular panel with a width of 30 and a height of 30. It features a central horizontal line labeled "casquillo M-16 inox." and a small circle labeled "Ø 30,000". The overall height is 149.8.
  - alzado:** A side view showing a thickness of 0.4 and a height of 0.4.
  - sección AA:** A cross-section showing a trapezoidal shape with a top width of 30, a bottom width of 19.5, and a height of 19.5. It includes a small circle labeled "Ø 30,000".
- TIPO L:**
  - planta:** A rectangular panel with a width of 30 and a height of 30. It features a central horizontal line labeled "casquillo M-16 inox." and a small circle labeled "Ø 30,000". The overall height is 149.8.
  - alzado:** A side view showing a thickness of 0.4 and a height of 0.4.
  - sección AA:** A cross-section showing a trapezoidal shape with a top width of 30, a bottom width of 19.5, and a height of 19.5. It includes a small circle labeled "Ø 30,000".

TIPO F 80 uds. 300 kg.  
TIPO G 106 uds. 410 kg.

gris granítico  
dacepado suave

Junta de 2mm. entre piezas  
chafan perimetral de 4x4mm.  
en testeros salvo en la base

TIPO F

planta

alzado

lateral

sección AA

TIPO G


planta

alzado

lateral

sección AA

SECCIONES



PAVIMENTO OLA  
SECCIONES

A

B

C

D

**TIPO A. RECTO**

Side elevation: A rectangle with a total height of 95. The base is divided into three segments: 80, 20, and 80. The 20-unit segments are labeled 'alzado frontal'.

Plan view: A rectangle with a width of 260 and a height of 51.4.

**TIPO B. CONVEXO**

Side elevation: A convex curve with a total height of 152. The base is divided into three segments: 259, 297.4, and 259. The 259-unit segments are labeled 'alzado frontal'.

Plan view: A rectangle with a width of 263.5 and a height of 51.4.

**TIPO C. CONCAVO**

Side elevation: A concave curve with a total height of 152. The base is divided into three segments: 259, 297.4, and 259. The 259-unit segments are labeled 'alzado frontal'.

Plan view: A rectangle with a width of 263.5 and a height of 51.4.

Technical drawings of two types of benches, TIPO P and TIPO P3, showing front, side, and top views with dimensions in cm.

**TIPO P:**

- Front View:** Total width 199.4 cm, total height 143.3 cm. The seat height is 50 cm. The backrest is labeled "alzado".
- Side View:** Total height 110 cm. The seat height is 50 cm. The backrest height is 33.3 cm. The backrest is labeled "sección".
- Top View:** Total width 192.6 cm, total depth 6.8 cm. The backrest is labeled "planta".

**TIPO P3:**

- Front View:** Total width 192.6 cm, total height 143.3 cm. The seat height is 50 cm. The backrest is labeled "alzado".
- Side View:** Total height 110 cm. The seat height is 50 cm. The backrest height is 33.3 cm. The backrest is labeled "sección".
- Top View:** Total width 192.6 cm, total depth 6.8 cm. The backrest is labeled "planta".