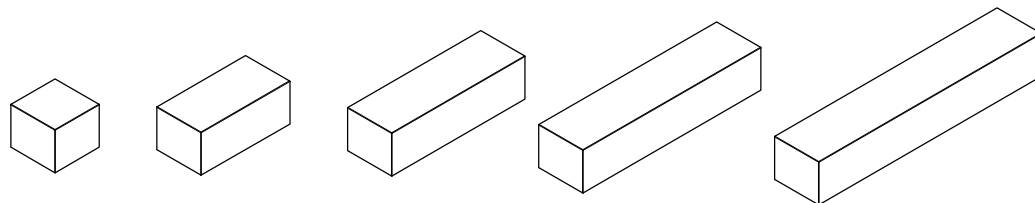


CARACTERÍSTICAS / CHARACTERISTICS

MATERIAL Hormigón / Hormigón reciclado
COLOR carta de colores estándar
ACABADO decapado e hidrofugado
COLOC. anclado con tornillos
PESO Box250: 1326kg / Box200: 1062kg /
 Box150: 796kg / Box100: 531kg /
 Box50: 266kg

MATERIAL Concrete / Recycled concrete
COLOUR standard color chart
FINISH etched and waterproofed
FIXING anchored with screws
WEIGHT Box250: 1326kg / Box200: 1062kg /
 Box150: 796kg / Box100: 531kg /
 Box50: 266kg

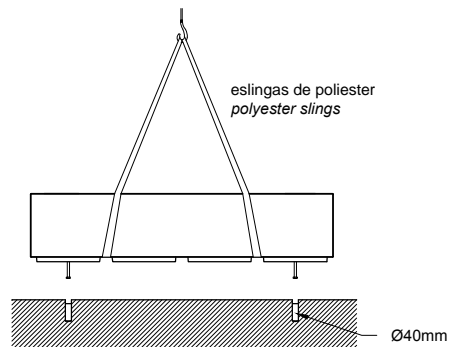


Update 04/01/2019
 Cotas / Sizes cm

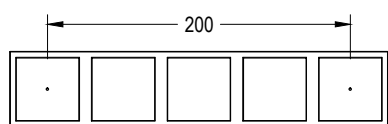
INSTALACIÓN / INSTALLATION

E:1/50

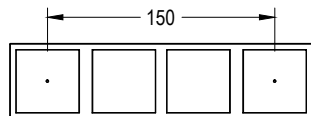
elevación / hoisting
 P = 266kg / 531kg / 796kg / 1062kg / 1326kg



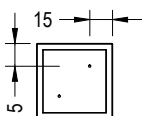
BOX 250



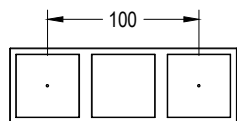
BOX 200



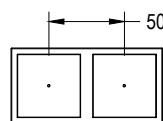
BOX 50



BOX 150



BOX 100



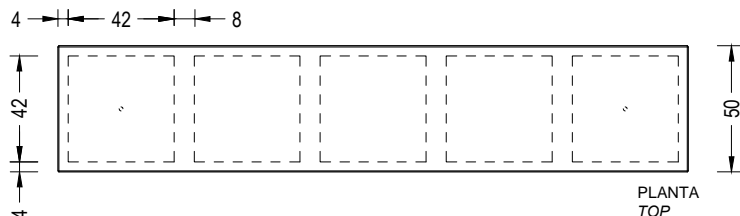
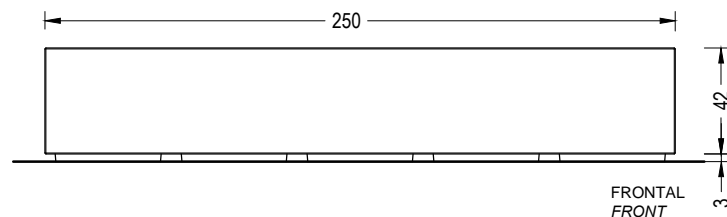
rosar 2 tornillos a fondo (Din 931 M16 x 140 mm)
 tightly screw stud bolts (Din 931 M16 x 140 mm)

taladrar el pavimento y rellenar de resina o mortero rico
 drill the pavement fill with resin or fat mortar

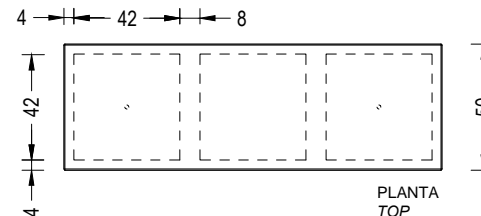
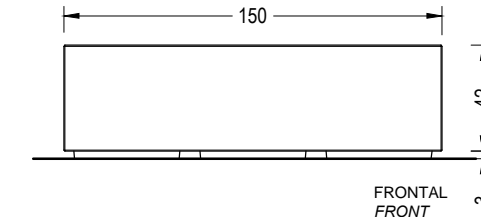
GEOMETRÍA / GEOMETRY

E:1/30

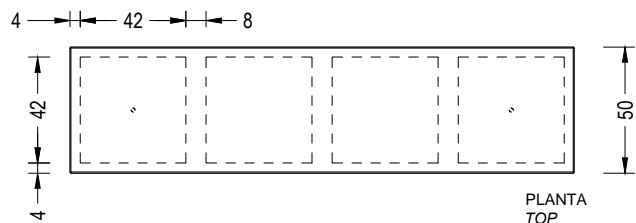
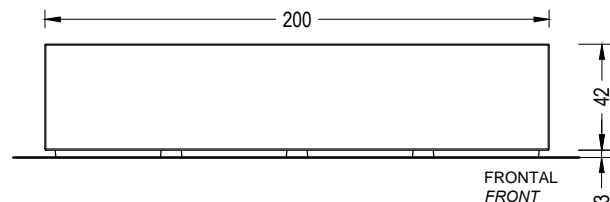
BOX 250



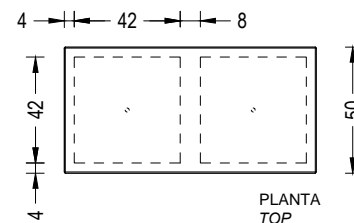
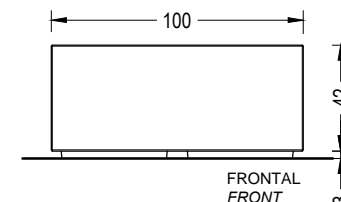
BOX 150



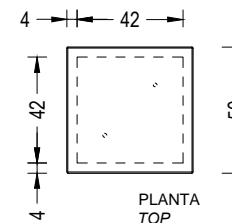
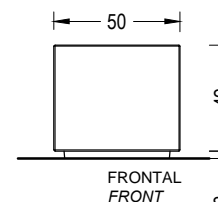
BOX 200



BOX 100



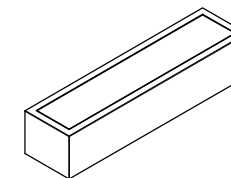
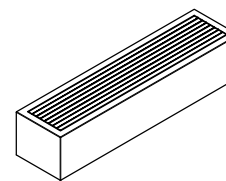
BOX 50



CARACTERÍSTICAS / CHARACTERISTICS

MATERIAL Hormigón / Hormigón reciclado
COLOR carta de colores estándar
ACABADO decapado e hidrofugado
COLOC. anclado con tornillos
PESO Teca: 1051 kg
 HPL: 1054 kg

MATERIAL Concrete / Recycled concrete
COLOUR standard color chart
FINISH etched and waterproofed
FIXING anchored with screws
WEIGHT Teak: 1051 kg
 HPL: 1054 kg



Update 04/01/2019
 Cotas / Sizes cm

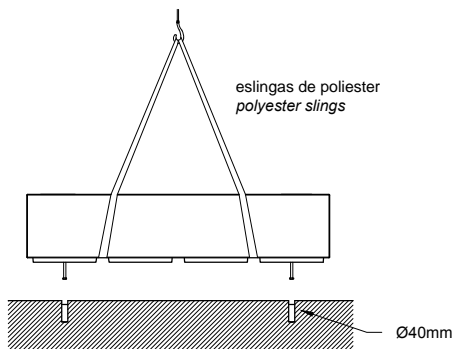
INSTALACIÓN / INSTALATION

GEOMETRÍA / GEOMETRY

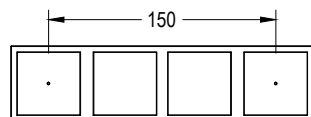
E:1/50

E:1/30

elevación / hoisting
 P = 1051 kg / 1054 kg



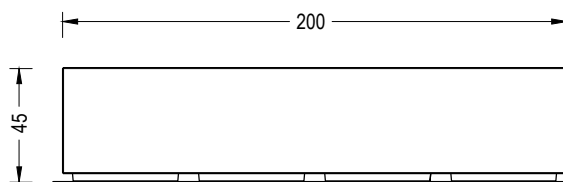
BOX 200



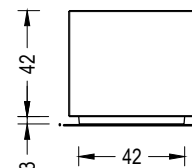
roskar 2 tornillos a fondo (Din 931 M16 x 140 mm)
 tightly screw stud bolts (Din 931 M16 x 140 mm)

taladrar el pavimento y rellenar de resina o mortero rico
 drill the pavement fill with resin or fat mortar

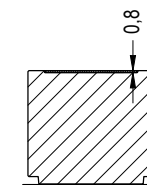
BOX 200



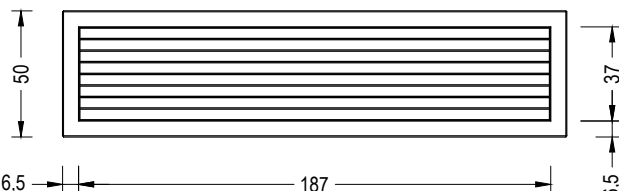
FRONTAL
 FRONT



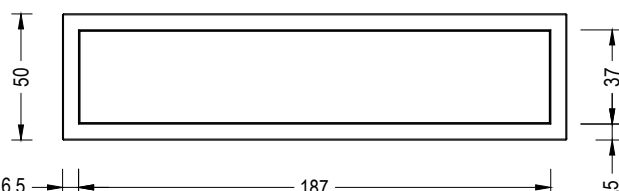
LATERAL
 SIDE



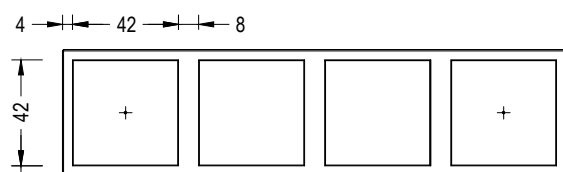
SECCION
 SECTION



PLANTA TECA
 TOP TEAK



PLANTA HPL
 TOP HPL



INFERIOR
 BOTTOM