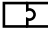







The *Godot* bench is made from reinforced concrete and constructed by adding two modules with different dimensions. The element that each part has in common is a semicircular opening at each end, creating an empty space inside the seat where the tree grows, while it also invites users to approach, sit down and relax in the shade.

Concrete |  2 uds. |  430 cm/max |  1700 kg |  8

Add-ons:  | 

 Update 10.03.2020



GODOT

Díez+díez diseño 2004

Escofet®

Origin

The *Godot* bench was designed based on the idea of creating an urban furniture element that would reflect the uniting of two halves beneath the shade of a tree, as occurs with the characters Vladimir and Estragon in the play “Waiting for Godot” by the Irish author Samuel Beckett. In the play, Beckett makes only a brief reference to the scene: a country lane and a tree. So Díez+Díez Diseño and Escofet added a bench to the scene in order to make the eternal metaphor of waiting more comfortable.

Versatile

The *Godot* benches serve as a seat and a tree guard for existing and newly-planted trees. They also serve as plant pots when supported on a structure.

Modular

The collection includes modules with different lengths. A single one of 95 cm, a double one of 155 cm and a triple one of 215 cm. They can all be combined with each other to form up to six different aggregations, leaving a circular space in the centre for an existing or a newly-planted tree.

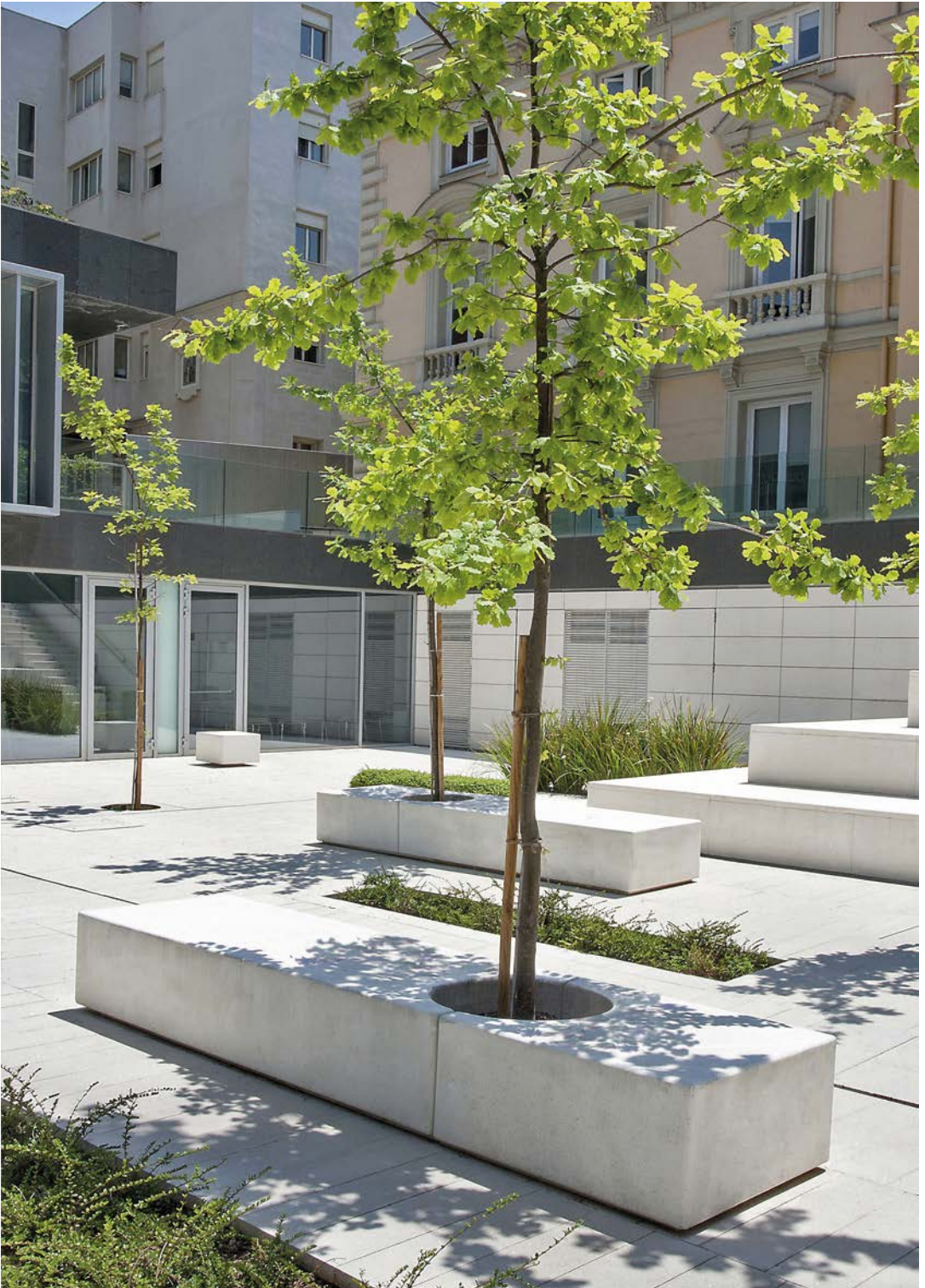
Material

Non-reinforced dry-mix concrete. Etched finish and colour in accordance with the standard *Escofet* colour chart.

Installation

The modules are arranged in pairs joined by two metal plates screwed to metal sleeves recessed inside the opening. The non-anchored pairs simply rest on the paving or sand.





1. Backless Bench

Godot	Single	Double	Triple
Dimensions	95 x 80 x 45 cm	155 x 80 x 45 cm	215 x 80 x 45 cm

Weight	665 kg	1185 kg	1700 kg
---------------	--------	---------	---------

1.1 General features

Material	Concrete	Fixing	Free-standing
-----------------	----------	---------------	---------------

Finish	Etched and waterproofed
---------------	-------------------------

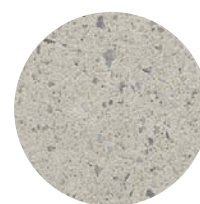
Colours



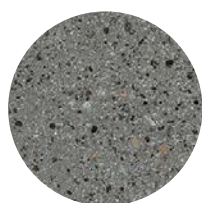
GR. Grey



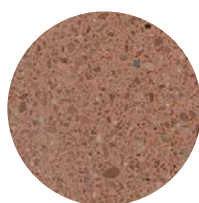
NG. Black



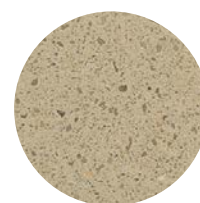
BL. White



CA. Grey CA



RA. Red

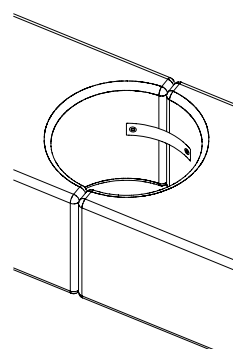
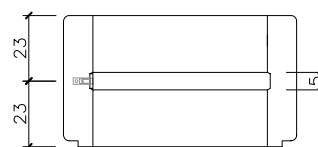
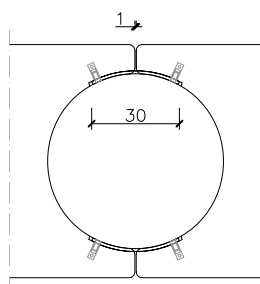
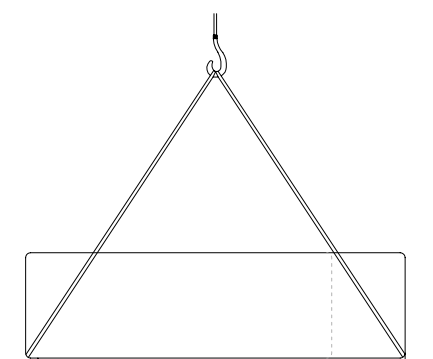


BG. Beige

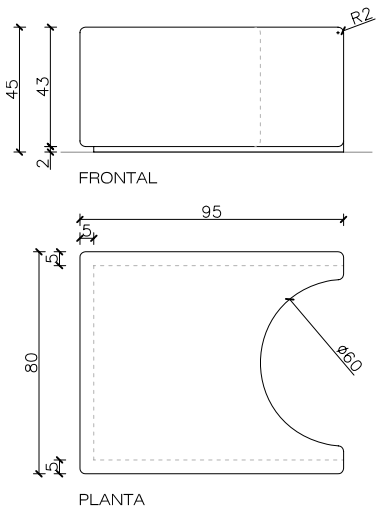
1.2 Installation system

Hoisting

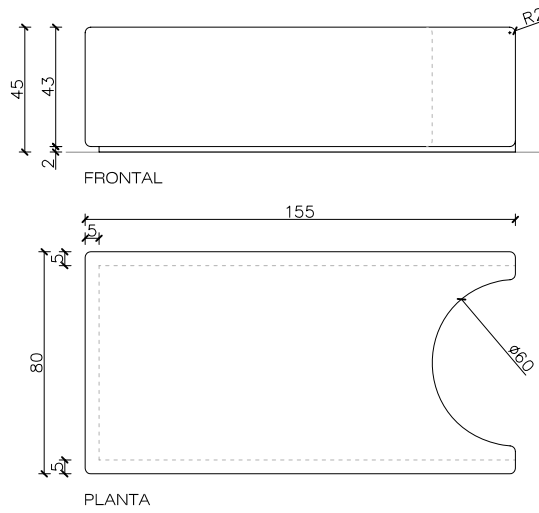
(P= 103 kg / 362 kg / 96 kg)



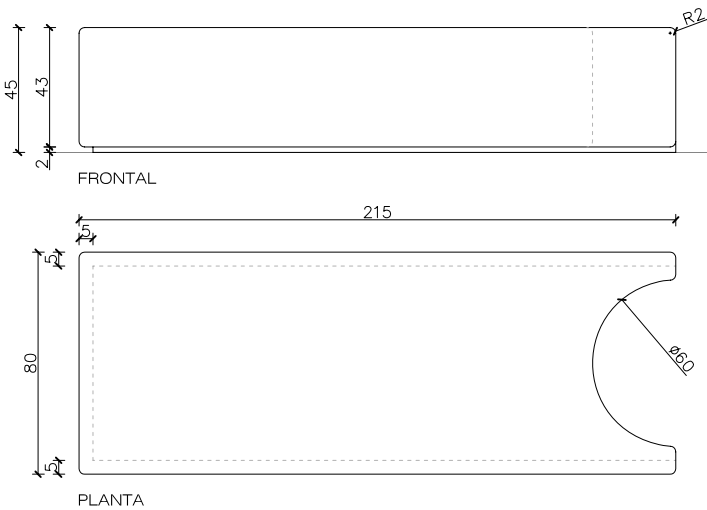
Godot Single



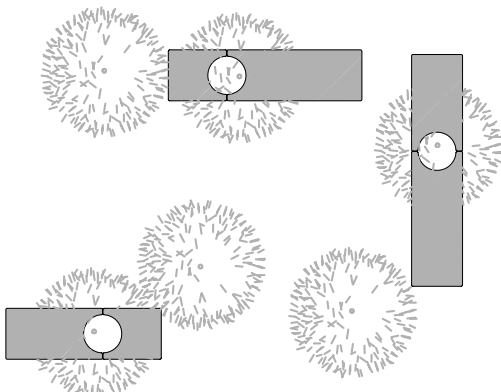
Godot Double



Godot Triple



Aggregations





Warranty

5 years in concrete elements.

The names, trademarks and industrial models of the products have been logged in the corresponding registers. The technical information provided by Escofet about its products can be modified without prior notice.

Escofet 1886 S.A
Head office and production

Montserrat, 162
E 08760 Martorell
Barcelona - España
T. 0034 937 737 150
F. 0034 937 737 151

info@escofet.com
www.escofet.com



GA-2005/0072 SST-0090/2010 ER-0403/2016