

Based on the geometry of a slanted cone with two non-parallel planes, the large volume *Lena* planter designed by Ruisanchez Arquitectos has an external diameter of 230 cm to allow the growth of trees of an average height. Made from dry-mix concrete, *Lena* has an external surface area characterised by a deep grooved relief, highlighted by a play of “lights and shadows” that give it great charm.

Concrete | Ø 235 cm | 🏠 1042 kg | 🪴 2000 L | 💧

🔄 Update 19.05.2020



Origin

Lena was originally designed in the project for remodelling Plaza de Antonio Machado in the city of Badalona to enable the planting of trees on the structure of a pre-existing underground car park.

Versatility

It can be installed in two positions: *Lena*-open, with the largest diameter at the top, and *Lena*-closed with the largest diameter at the bottom. In both cases, the bottom remains open, allowing *Lena* to be installed directly on the paving, sand or earth.

Material

Moulded concrete, reinforced with stainless steel, with a stripped finish and in the *Escofet* standard chart colour.

Installation

Self-stabilising, no anchors are required to install them. When installed on the paving, drainage takes place through the open base and the free joint in the support zone. The soil volume is held in place by a double geo-textile sheet and an intermediate layer of gravel or a thick base layer of porous concrete to permit water drainage without causing soil loss.





1. Planter

Lena

Dimensions Ø 235 x 100 cm

Weight 1042 kg

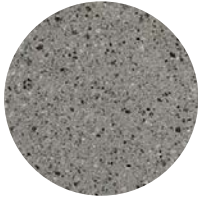
Capacity 2000 L

1.1 General features

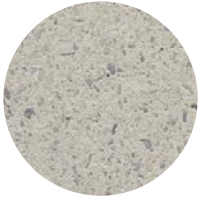
Material Reinforced concrete **Fixing** Free-standing

Finish Etched and waterproofed

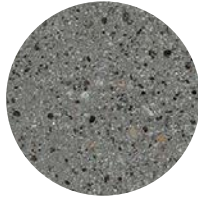
Colours



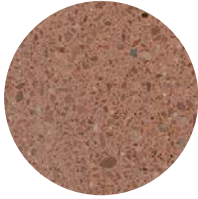
GR. Grey



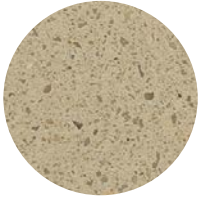
BL. White



CA. CA Grey



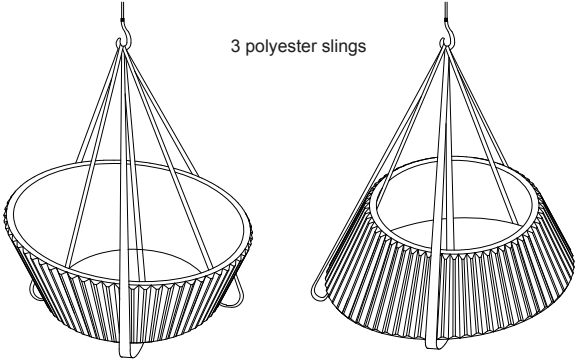
RA. Red



BG. Beige

1.2 Installation system

Hoisting
(P= 1042 kg)

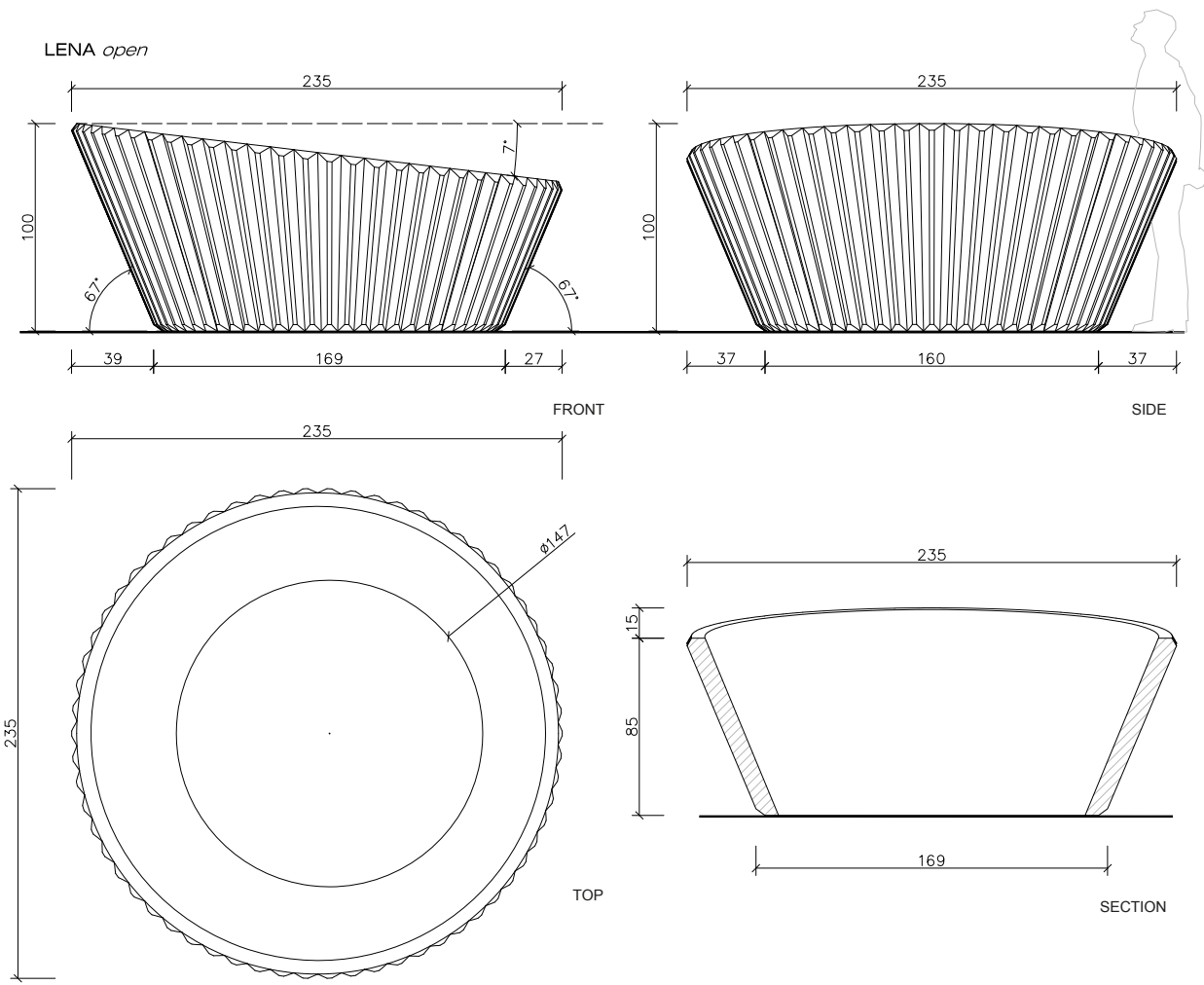


LENA *open*

LENA *close*

1.3 Geometry

Lena





Warranty

5 years in all its components.

The names, trademarks and industrial models of the products have been logged in the corresponding registers. The technical information provided by Escofet about its products can be modified without prior notice.

Escofet 1886 S.A
Head office and production

Montserrat, 162
E 08760 Martorell
Barcelona - España
T. 0034 937 737 150
F. 0034 937 737 151

info@escofet.com
www.escofet.com



GA-2005/0072 SST-0090/2010 ER-0403/2016