


*Junio* is a bench made from a single piece of concrete, with a design that reveals a geometry capable of generating presence and comfort in any urban setting. The slotted seat permits the evacuation of rainwater and increases the ventilation effect, lowering the temperature in warm weather conditions.

Concrete |  230 cm |  720 kg |  4

 Update 03.01.2018



#### Origen

The architects Cruz and Ortiz created their first design with Abril and Mayo and these were then followed by Junio.

#### Modular

Junio can be aligned by aggregation to form long rows of benches and no anchors are needed to install them.

#### Material

Bench made from reinforced, acid-etched, water-repellent concrete in the Escofet standard chart colour.

#### Installation

Self-standing, with no need for anchors.

JUNIO



Escofet®

JUNIO



Escofet®

1. Bench

Junio

Dimensions 230 x 60 x 45 (75) cm

Weight 720 kg

1.1 General features

Material Reinforced concrete Fixing Free-standing

Finish Etched and waterproofed

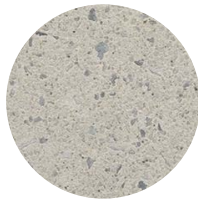
Colours



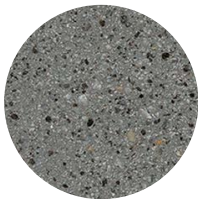
GR. Grey



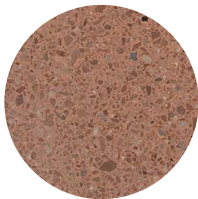
NG. Black



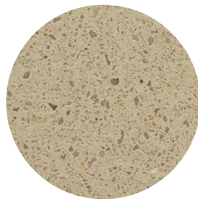
BL. White



CA. Grey CA



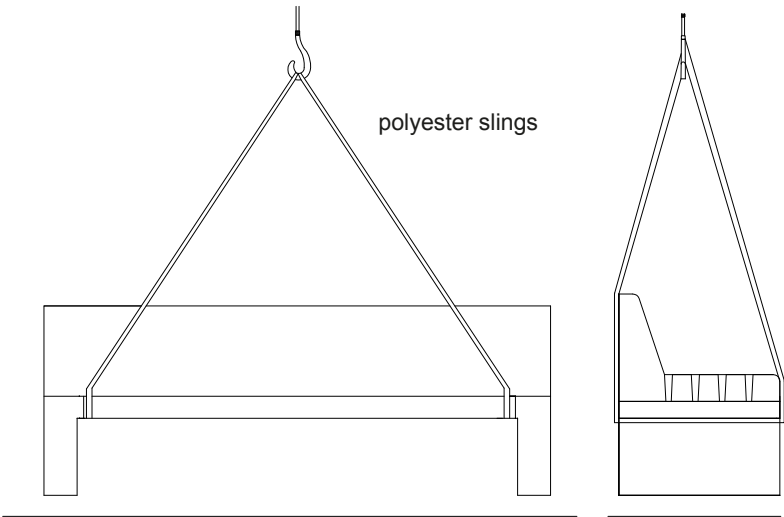
RA. Red



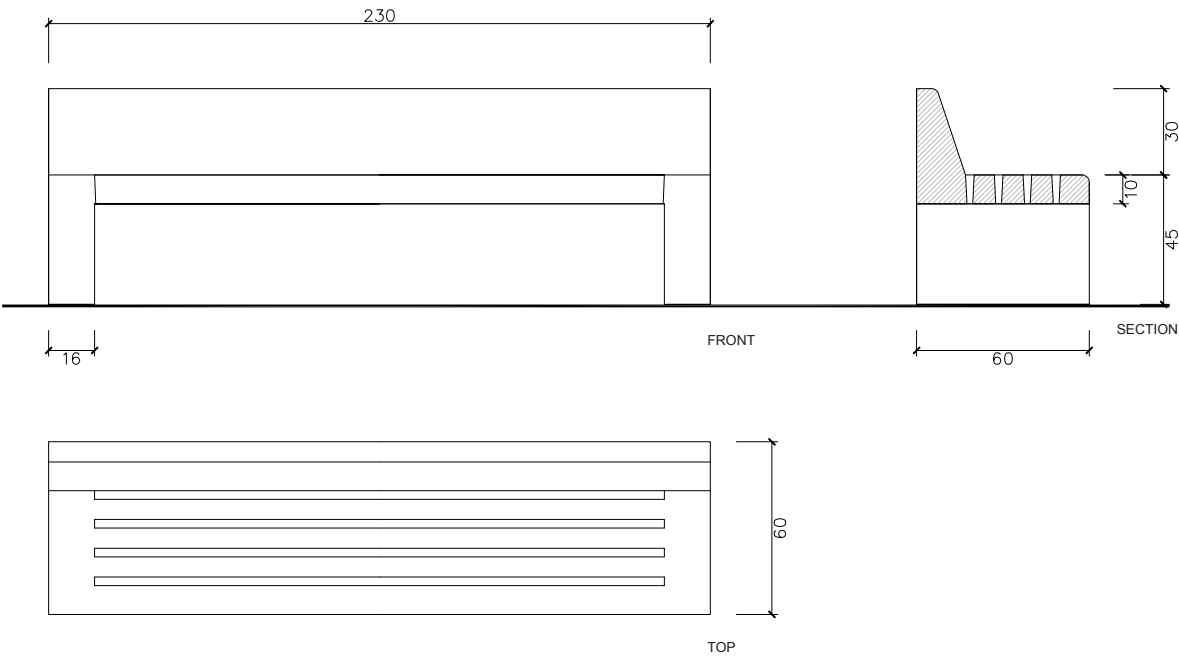
BG. Beige

1.2 Installation system

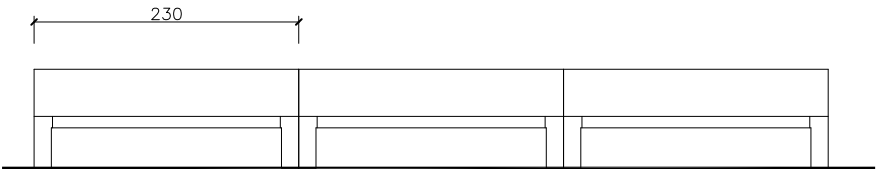
Hoisting  
(P=720 kg)



Junio



Aggregations





### Warranty

5 years in all its components.

The names, trademarks and industrial models of the products have been logged in the corresponding registers. The technical information provided by Escofet about its products can be modified without prior notice.

Escofet 1886 S.A  
Head office and production

Montserrat, 162  
E 08760 Martorell  
Barcelona - España  
T. 0034 937 737 150  
F. 0034 937 737 151

info@escofet.com  
www.escofet.com

Follow us



GA-2005/0072 SST-0090/2010 ER-0403/2016