

**Mayo** is a backless bench made from reinforced concrete and with a section formed by arches. The simplicity of this bench lies in its forceful, pure geometry. The perforated seat, like a checkerboard, permits the evacuation of rainwater and increases the ventilation effect, lowering the temperature in warm weather conditions.

Concrete |  296 cm/max |  812 kg |  10

 Update 12.01.2021



MAYO

Cruz y Ortiz 1990

Escofet®



#### Origin

The architects Cruz and Ortiz created their first design called Abril, which was then followed by Mayo and Junio. The collection was recently extended to include *Mayo circular* as a singular element for the Granada Health Technology Campus.

#### Universal

*Mayo* demonstrates its capacity to blend into the urban environment without imposing, and with the desire to remain due to its material condition. A design that is rigorous and simple in terms of its formulation, but universal in terms of its application.

*Mayo circular*, with rounded geometry, marks the space individually and permits an ambiguous use.

#### Versatile

The backless bench is manufactured and edited in two sizes, *Mayo 296* and *Mayo 220*. It is completed with *Mayo circular*, 45 cm high and a diameter of 230 cm as a backless bench or also as a resting platform.

#### Material

Bench made from reinforced, etched, water-repellent concrete in the Escofet standard colour chart.

#### Installation

Self-standing, with no need for anchors.







# 1. Backless bench

Mayo	Mayo 296	Mayo 220	Mayo Circular
<b>Dimensions</b>	296 x 86 x 45 cm	220 x 60 x 45 cm	Ø230 x 45 cm
<b>Weight</b>	812 kg	455 kg	853 kg

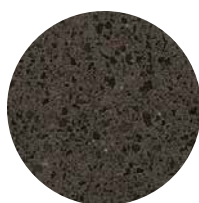
## 1.1 General features

<b>Material</b>	Reinforced concrete	<b>Fixing</b>	Free-standing / Anchored with screws
<b>Finish</b>	Etched and waterproofed		

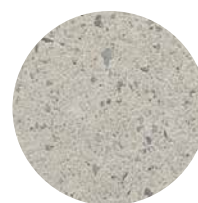
## Colours



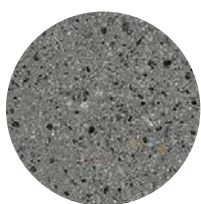
**GR.** Grey



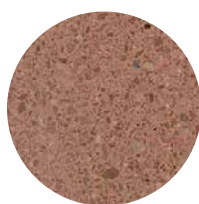
**NG.** Black



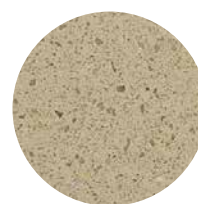
**BL.** White



**CA.** Grey CA



**RA.** Red



**BG.** Beige

## 1.2 Installation system

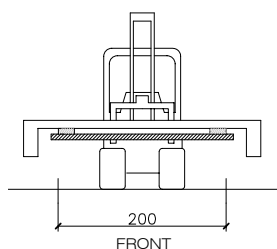
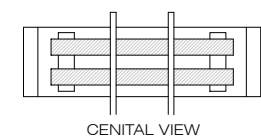
### Hoisting

(P=812 / 455 / 853 kg)

### Installation

*Unloading by fork-lift:*

Lift bench by interposing wooden boards that support bench by means of two rests placed at 2 m distance from each other.

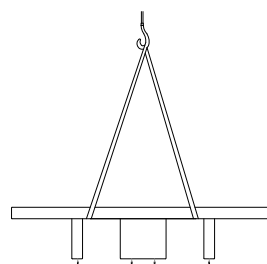
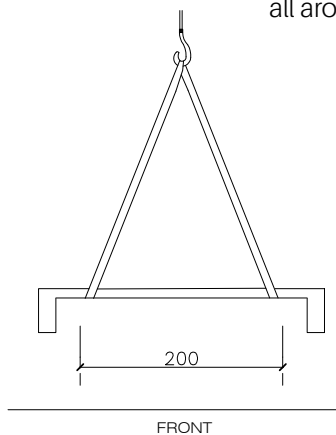


*Unloading by crane:*

Place slings as distance between suspension points be at least of 2 m.

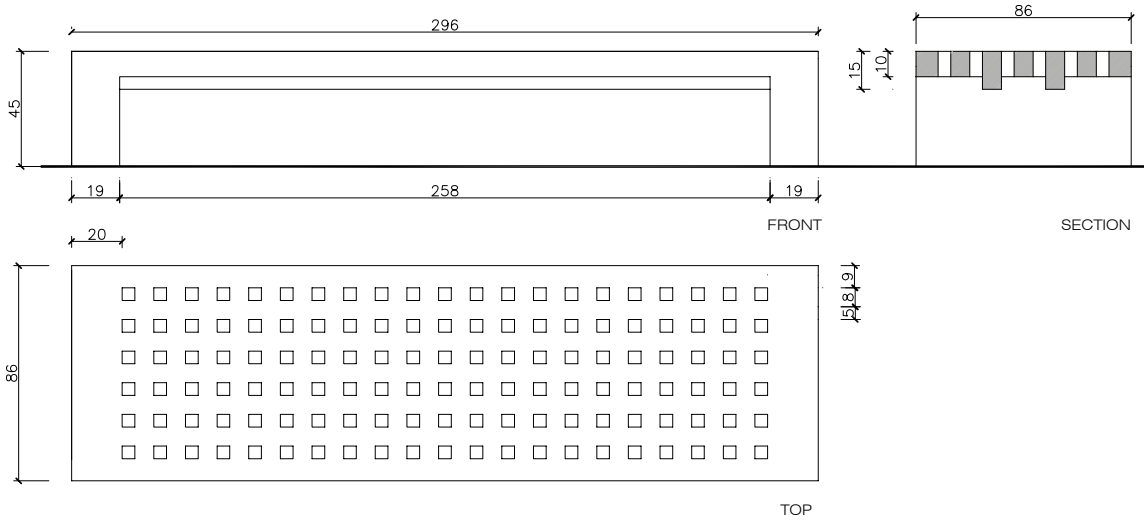
*Mayo circular*

Drill pavement (Ø 14mm) and fill with resin or fat mortar. Tightly screw the 4 stud bolts M-10 x100. Center and caulk the bench foot all around.

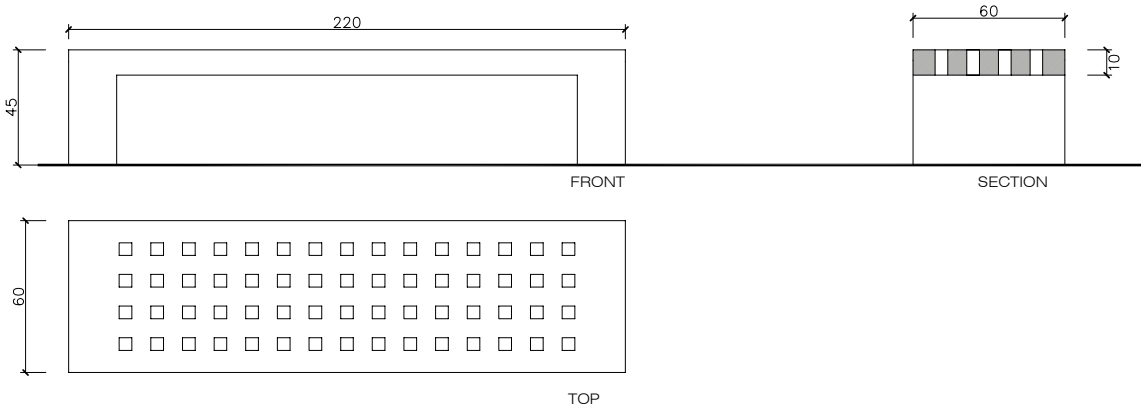


### 1.3 Geometry

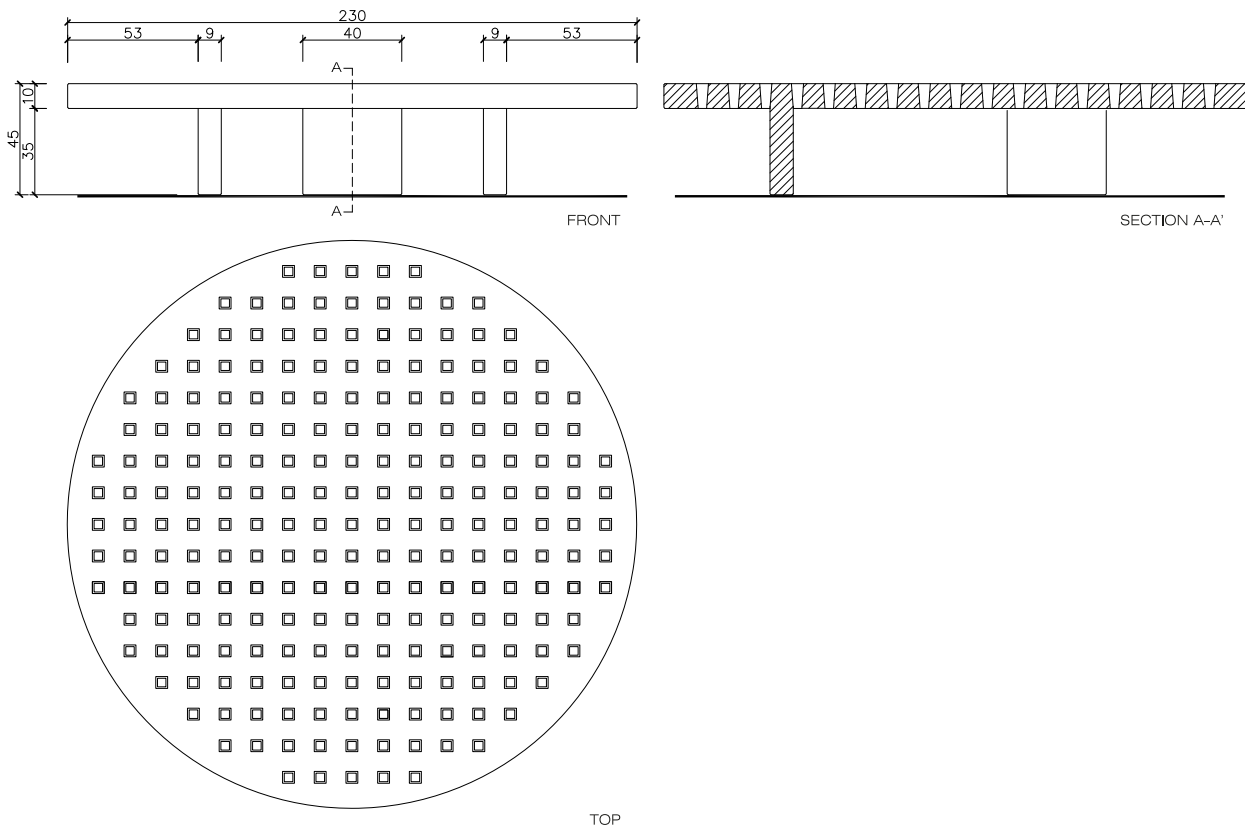
#### Mayo 296

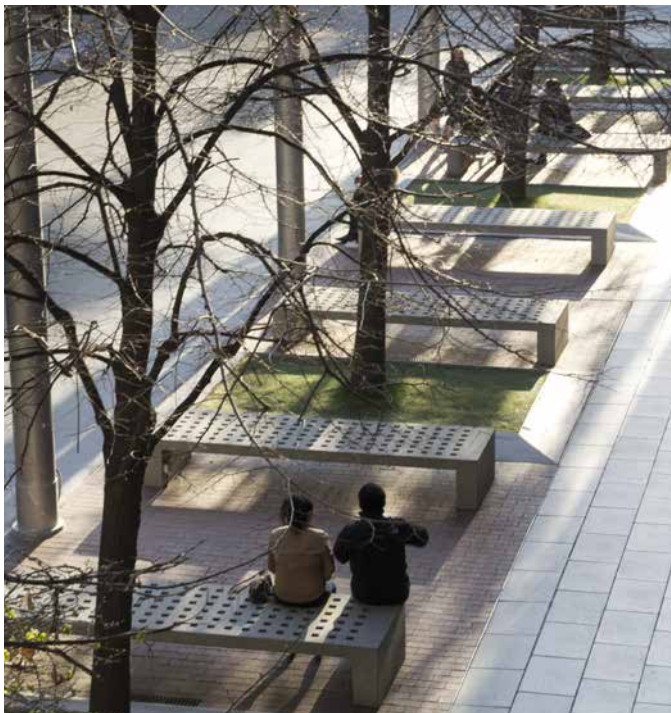


#### Mayo 220



#### Mayo circular





## Warranty

5 years in all its components.

The names, trademarks and industrial models of the products have been logged in the corresponding registers. The technical information provided by Escofet about its products can be modified without prior notice.

Escofet 1886 S.A  
Head office and production

Montserrat, 162  
E 08760 Martorell  
Barcelona - España  
T. 0034 937 737 150  
F. 0034 937 737 151

info@escofet.com  
www.escofet.com



GA-2005/0072 SST-0090/2010 ER-0403/2016