


Extasi is an urban element made from concrete with a triangular shape and rounded edges. Despite being designed for installation outdoor, it projects the warmth of an indoor area.

Concrete |  165 cm |  1420 kg |  5

 Update 14.01.2019



Origin

This element belongs to the collection of “New benches for the Gran Via in Barcelona” represented by *Extasi*, *Boomerang*, *Puff*, *Cargol* and *Desert*. Each of these elements has a singular geometry, and their shapes and dimensions evoke different situations. *Puff* and *Extasi* evoke the privacy of the home, *Boomerang* reminds us of flying objects, while *Cargol* elicits the world of animals and *Desert* the universe of minerals. Each of them stimulate the imagination and awaken the senses in their own way.

Material

Non-reinforced dry-mix concrete with a stripped finish, in the *Escofet* catalogue standard chart colours.

Installation

Both models are designed to rest on the paving, compacted sand or lawn.

EXTASI



Escofet®

EXTASI



Escofet®

1. Backless bench

Extasi

Dimensiones 165 x 152 x 45 cm

Weight 1420 kg

1.1 General features

Material Concrete Fixing Free-standing

Finish Etched and waterproofed

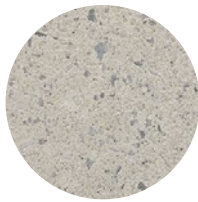
Colours



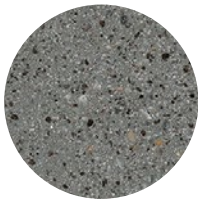
GR. Grey



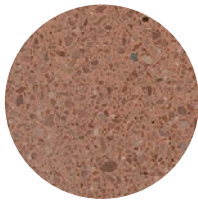
NG. Black



BL. White



CA. Grey CA



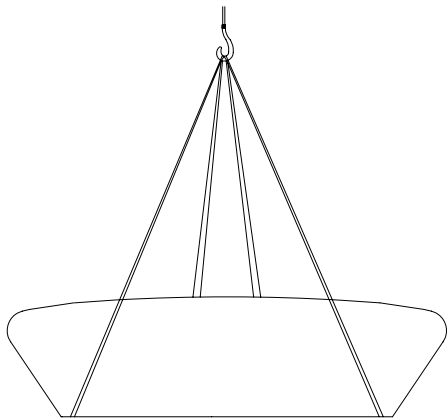
RA. Red



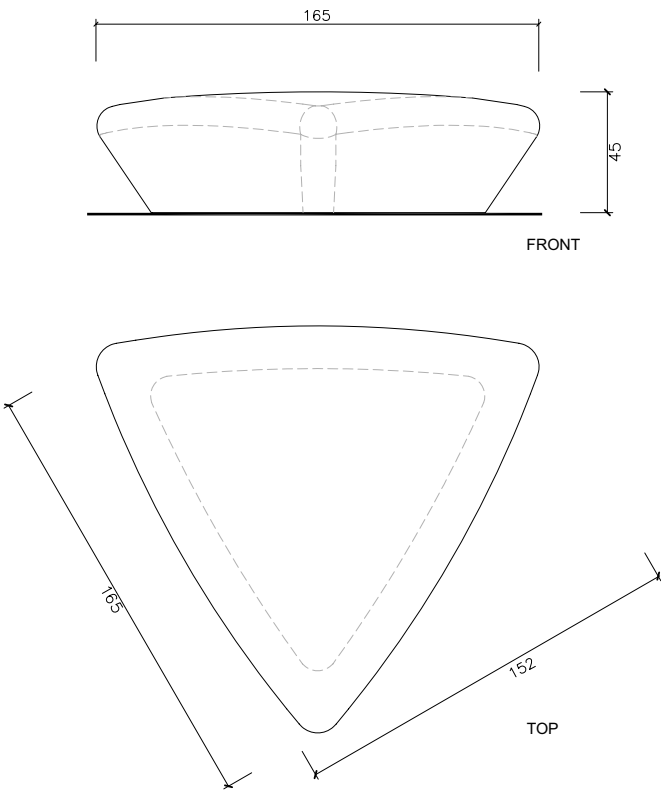
BG. Beige

1.2 Installation system

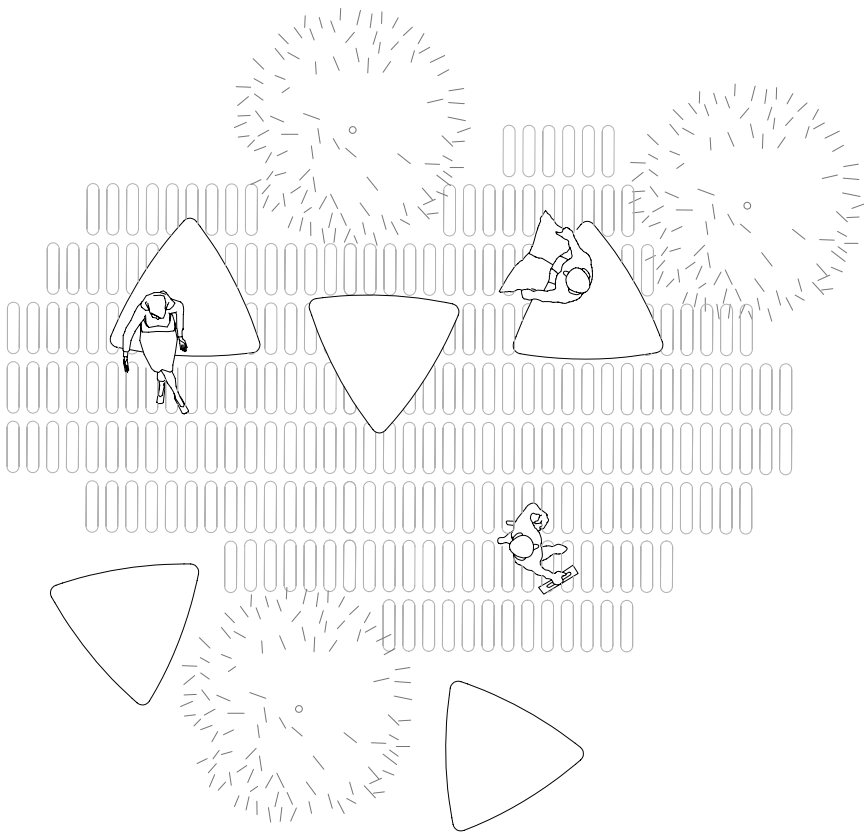
Hoisting
(W=1420 kg)

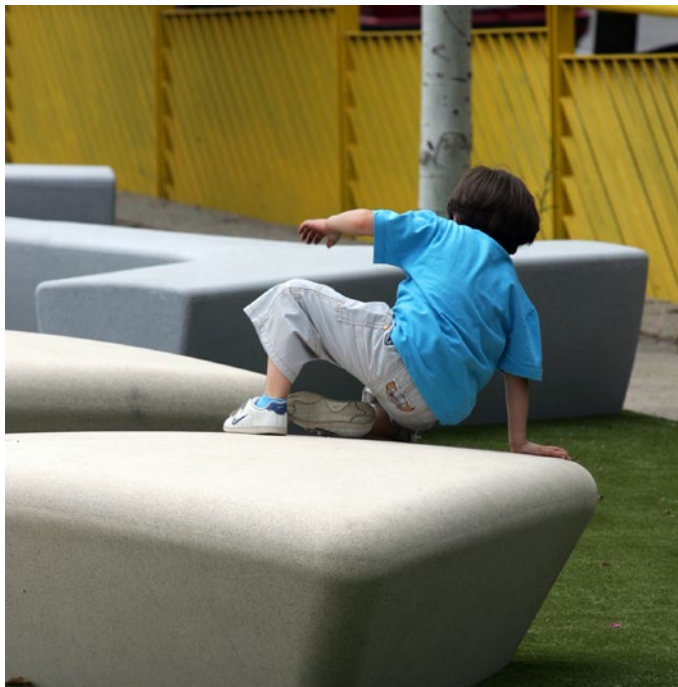


Extasi



Aggregations





Warranty

5 years in all its components.

The names, trademarks and industrial models of the products have been logged in the corresponding registers. The technical information provided by Escofet about its products can be modified without prior notice.

Escofet 1886 S.A
Head office and production

Montserrat, 162
E 08760 Martorell
Barcelona - España
T. 0034 937 737 150
F. 0034 937 737 151

info@escofet.com
www.escofet.com

Follow us



GA-2005/0072 SST-0090/2010 ER-0403/2016