

# CARACTERISTICAS

MATERIAL polietileno LDPE / hormigón  
 COLOR blanco y negro / gris, beige, blanco, negro  
 ACABADO micro-texturado / decapado e hidrofugado  
 COLOCACION sin anclaje / anclado  
 PESO 6 Kg / 128 Kg

MATERIAL polyethylene LDPE / cast stone  
 COLOUR white and black/ grey, beige, white, black  
 FINISH micro-textured/ acid-etched and waterproofed  
 FIXING free standing / anchored  
 WEIGHT 6 Kg / 128 Kg

DISEÑO / DESIGN Ramón Úbeda / Otto Canalda

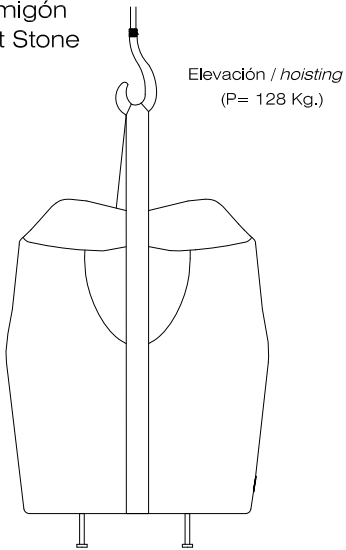


COOL®

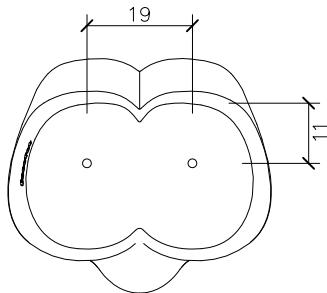
## SISTEMA DE COLOCACION

## GEOMETRIA ESCALA 0 CM 25CM

Hormigón  
Cast Stone



-taladrar el pavimento Ø14  
y llenar con resina o mortero rico.  
-drill pavement Ø14  
and fill with resin or fat mortar

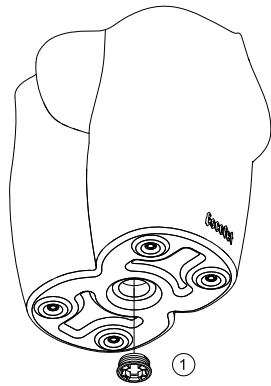


-roscar los 2 tornillos a fondo M-10x100  
-tightly screw the 3 stud bolts M-10x100

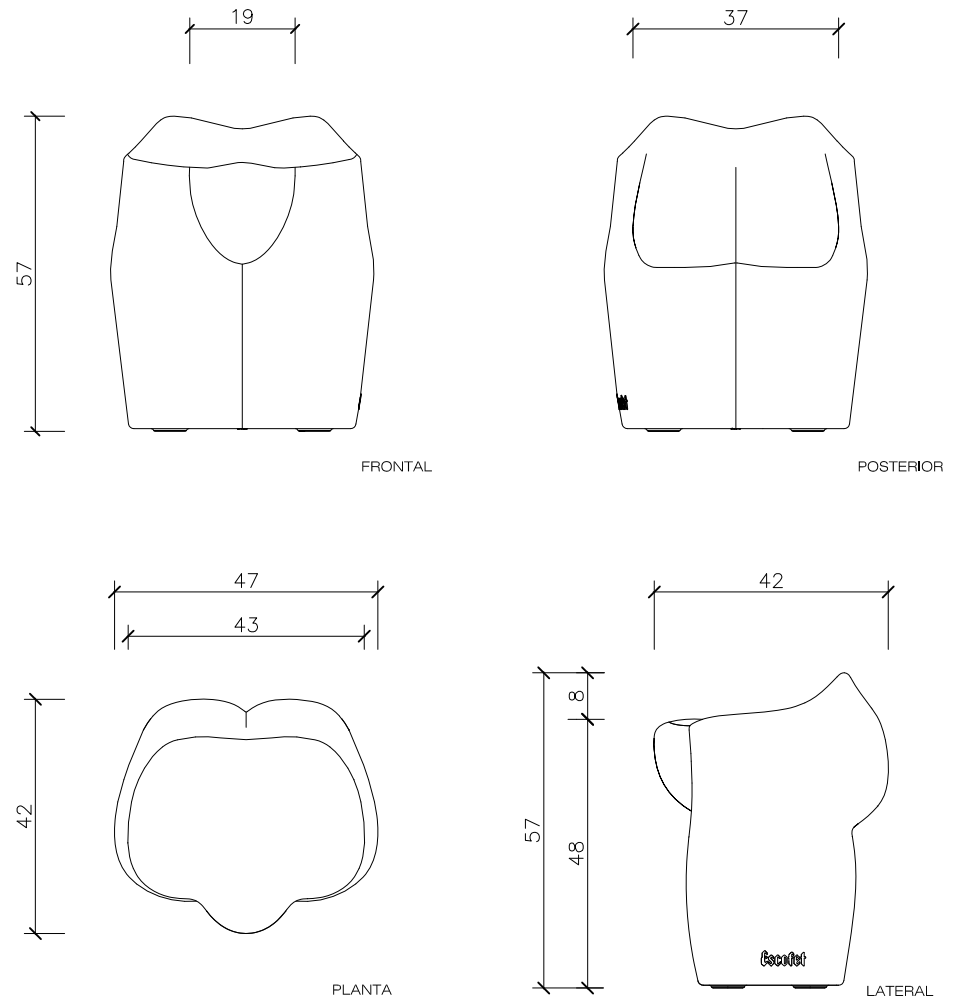
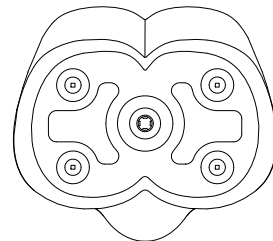
Polietileno LDPE  
Polyethylene LDPE

Elevación / hoisting  
(P= 6 Kg.)

① tapa registro roscada  
threaded inspection hatch



- Lastre de arena opcional para incrementar el peso  
Optional and ballast to increase the weight



www.escofet.com

escofet

b.39