

The Soc urban elements are used as seats, borders and also as group reference points, generating meeting places or linear arrangements and highlighting routes. They also serve as isolated elements to indicate specific sites. They have an optional LED light in their entire perimeter.

Concrete | LED | Ø 120 cm/max. | 1081 kg | 3

🔄 Update 11.03.2020



SOC

SCOB arquitectes 2017

Escofet®

Contemporary

Their simple yet robust design, combined with the lighting option and the finish colour, make them extremely versatile products for universal use in urban settings.

Design

The collection is presented with three models of different diameters: 120, 90 and 60 cm resting on the ground with a recessed socket that enhances its volume. Optionally it incorporates LED light, which surrounds its entire perimeter, generating a levitation effect at night. Their geometry, weight and shock resistance make them the perfect dissuasive element that is ideal for creating boundaries. The driver's registration lid is also available in white polyethylene.

Material

Stool made from reinforced, etched, water-repellent concrete in the Escofet standard colour chart.

Installation

The round concrete cover makes it possible to inspect the Driver and LED strip. Fastened to the paving with three M12 screws.

SOC



Escofet[®]

SOC



Escofet
®

1. Backless benches

Soc	60	90	120
Dimensions	Ø60 x 45	Ø90 x 45	Ø120 x 45
Weight	224 kg	550 kg	1081 kg
Lighting	LED 6 W; 6000° K o 3000° K	LED 10 W; 6000° K o 3000° K	LED 12 W; 6000° K o 3000° K
Driver	24V / IP67		

1.1 General features

Material	Concrete	Fixing	Anchored with screws
Finish	Etched and waterproofed		
Accesories	Polyethylene LDPE		

Colours



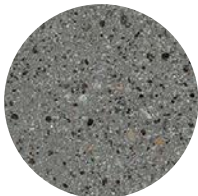
GR. Grey



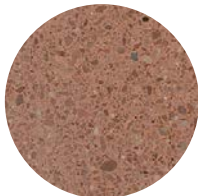
NG. Black



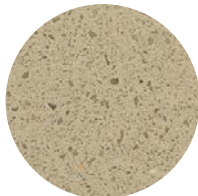
BL. White



CA. CA Grey



RA. Red



BG. Beige



A. White polyethylene

1.2 Installation system

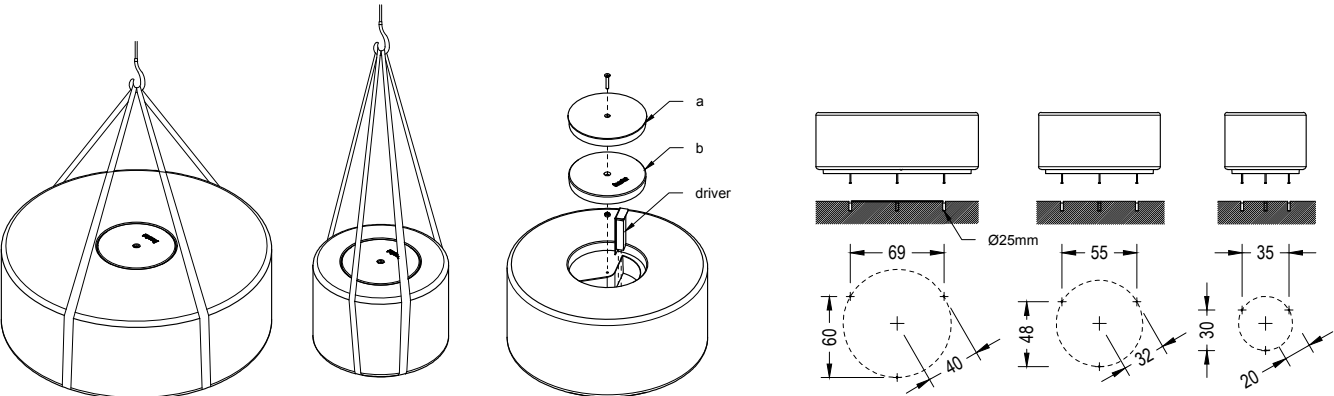
Hoisting

(P=224 / 550 Kg)

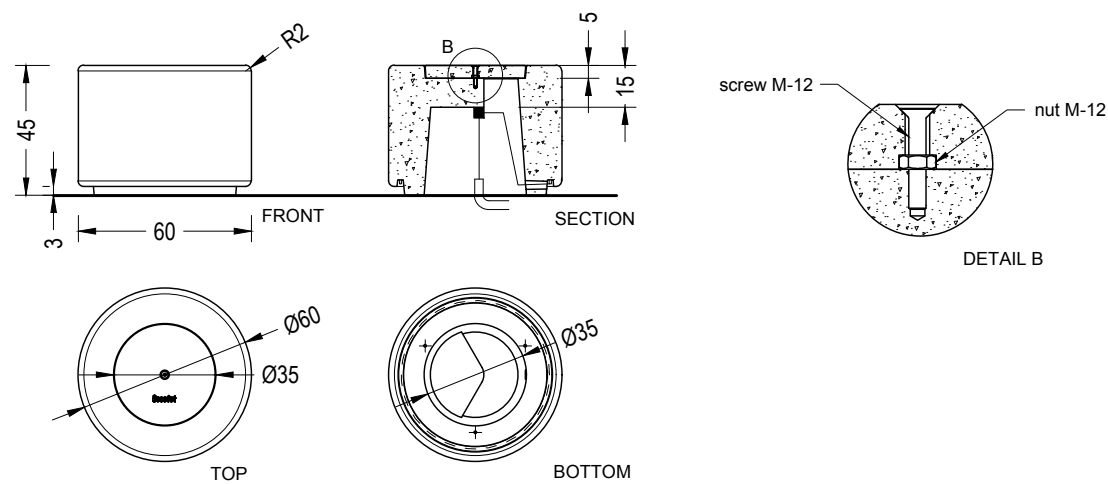
Installation

Tightly screw 3 stud bolts (M12 x 140).
Drill pavement fill with resin or fat mortar

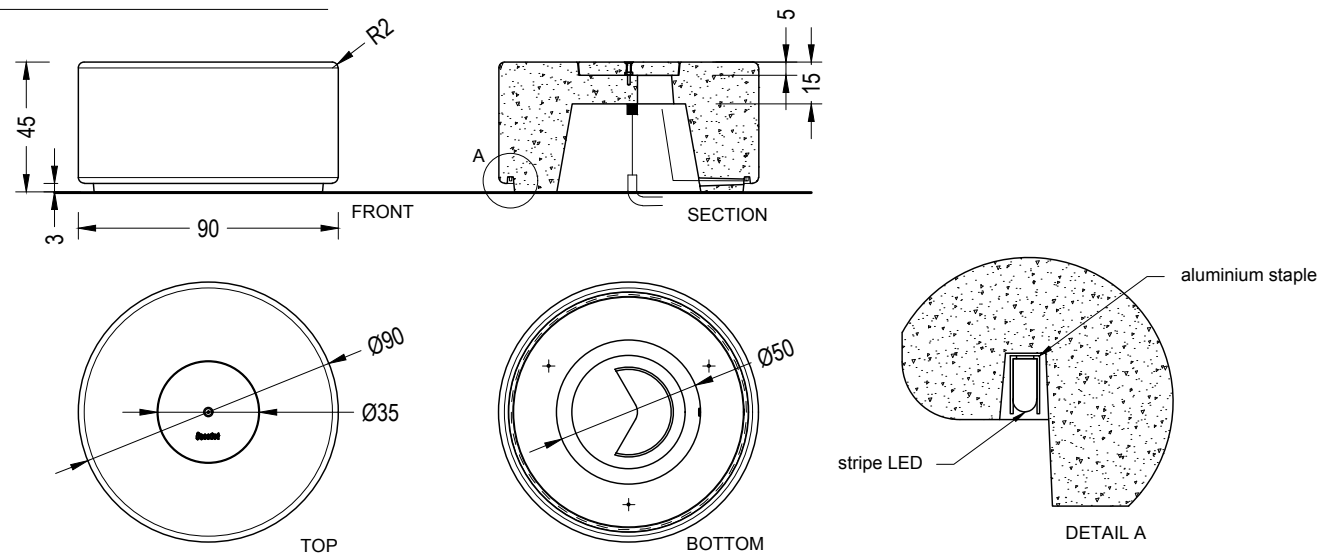
- a. Polyethylene
- b. Concrete



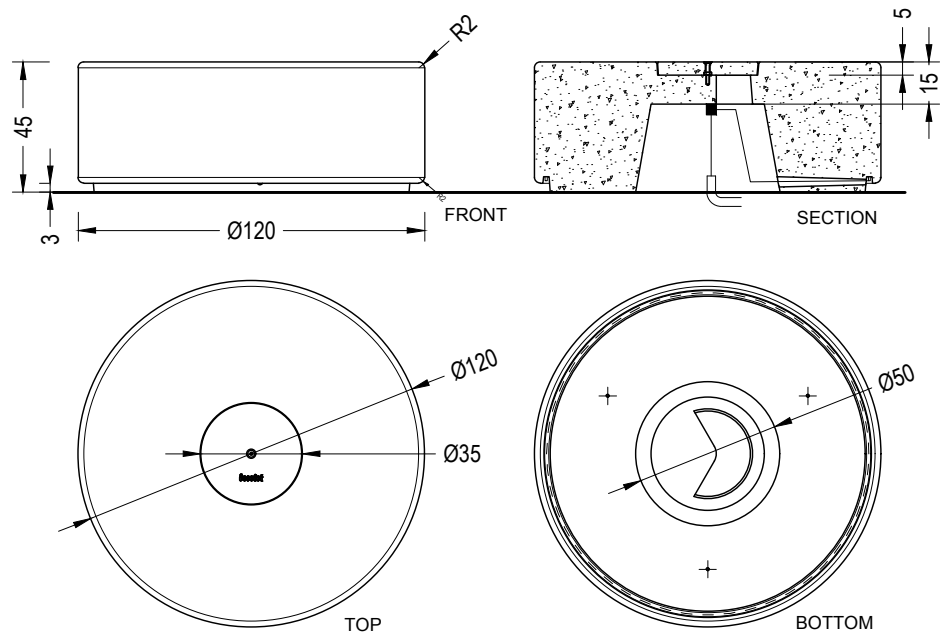
Soc 90



Soc 90



Soc 120







Warranty

5 years in concrete elements.

The names, trademarks and industrial models of the products have been logged in the corresponding registers. The technical information provided by Escofet about its products can be modified without prior notice.

Escofet 1886 S.A
Head office and production

Montserrat, 162
E 08760 Martorell
Barcelona - España
T. 0034 937 737 150
F. 0034 937 737 151

info@escofet.com
www.escofet.com



GA-2005/0072 SST-0090/2010 ER-0403/2016