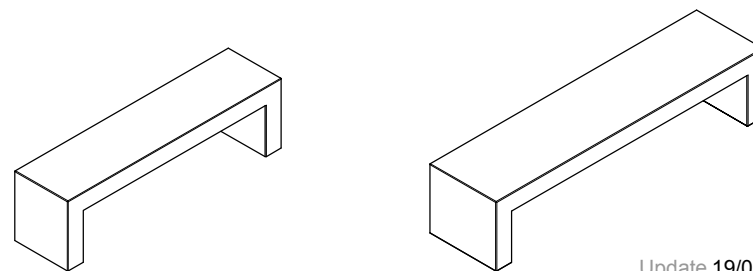


CARACTERÍSTICAS / CHARACTERISTICS

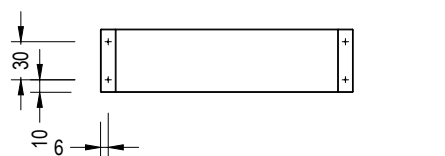
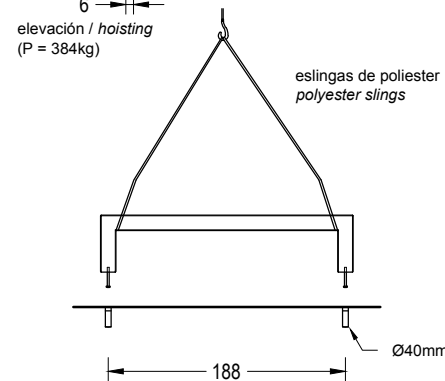
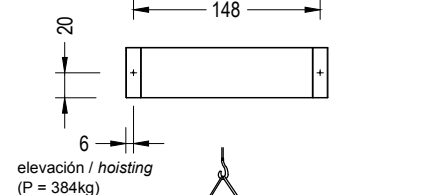
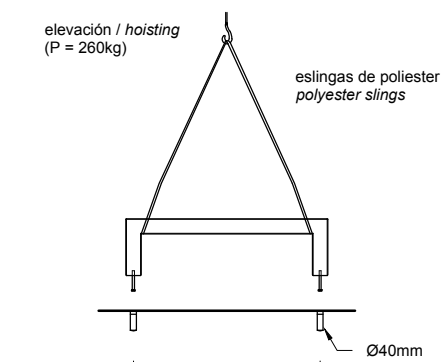
MATERIAL hormigón / hormigón reciclado *MATERIAL concrete / recycled concrete*
 COLOR carta colores estandar *COLOUR standard color chart*
 ACABADO decapado e hidrofugado *FINISH etched and waterproofed*
 COLOC. anclado con tornillos *FIXING anchored with screws*
 PESO PORTIC 160: 260kg *WEIGHT PORTIC 160: 260kg*
 PORTIC 200: 384kg *PORTIC 200: 384kg*



Update 19/06/2018
 Cotas / Sizes cm

INSTALACIÓN / INSTALLATION

E:1/60



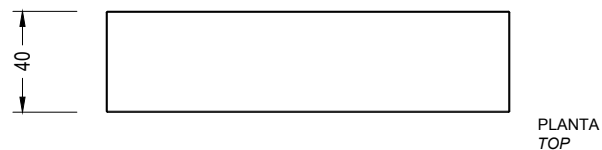
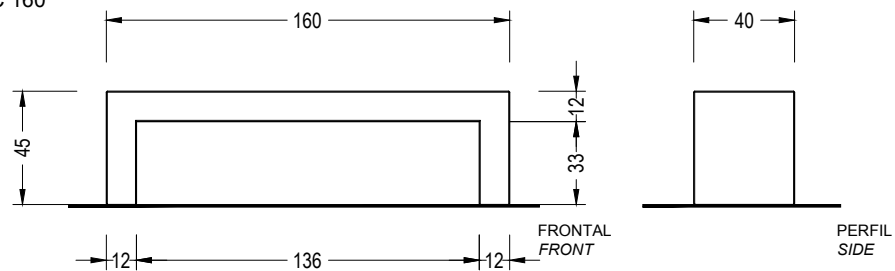
rosacar 2 tornillos a fondo (Din 931 M16 x 140mm)
 tightly screw 2 stud bolts (Din 931 M16 x 140mm)

taladrar el pavimento y llenar de resina o mortero rico
 drill pavement fill with resin or fat mortar

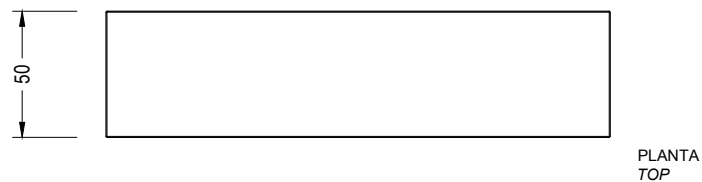
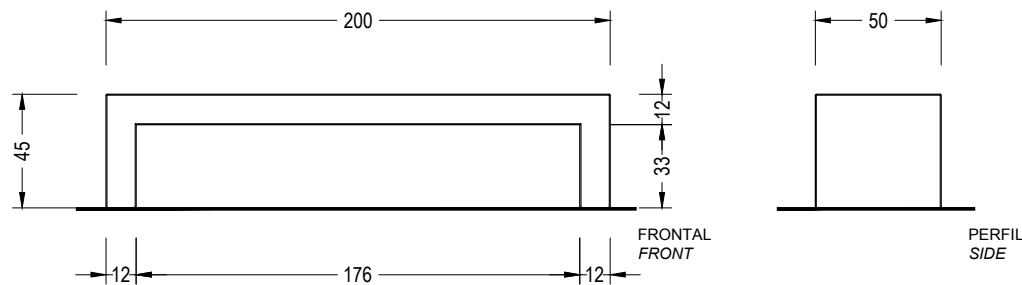
GEOMETRÍA / GEOMETRY

E:1/30

PORTIC 160

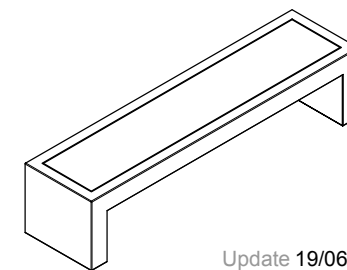
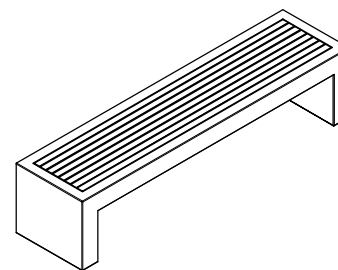


PORTIC 200



CARACTERÍSTICAS / CHARACTERISTICS

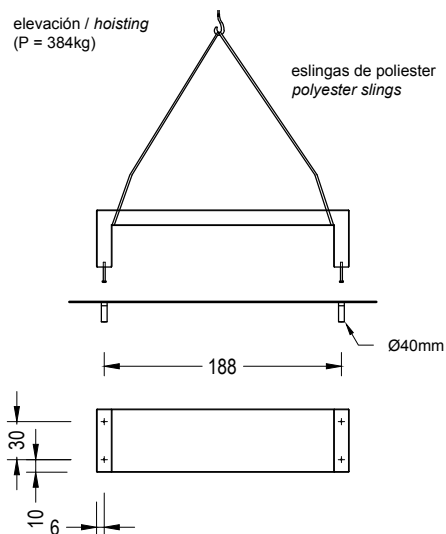
MATERIAL	hormigón / hormigón reciclado	MATERIAL	concrete / recycled concrete
COLOR	carta colores estandar	COLOUR	standard color chart
ACABADO	decapado e hidrofugado	FINISH	etched and waterproofed
COLOC.	anclado con tornillos	FIXING	anchored with screws
PESO	Teca: 377 kg	WEIGHT	Teca: 377 kg
	HPL: 380 kg		HPL: 380 kg



Update 19/06/2018
Cotas / Sizes cm

INSTALACIÓN / INSTALLATION

E:1/60



roscar 2 tornillos a fondo (Din 931 M16 x 140mm)
tightly screw 2 stud bolts (Din 931 M16 x 140mm)

taladrar el pavimento y llenar de resina o mortero rico
drill pavement fill with resin or fat mortar

GEOMETRÍA / GEOMETRY

E:1/30

PORTIC 200

