

CARACTERISTICAS

MATERIAL Boca / Cenicero: Fundición de aluminio EN AC-51100 aluminio granallado y anodizado brillante
Cuerpo / Tapa: Chapa de acero zincado pintado en polvo de poliéster color negro, efecto forja o color gris plata

COLOCACION Contenedor interior: polietileno ignífugo negro empotrado o fijado con tornillos de acero inox.

PESO 26 - 30 kg

CAPACIDAD 62 litros

MATERIAL Mouth / Ashtray: Cast aluminium EN AC-51100 sand-blasted and shiny anodized aluminium finish
Body / Cover: zinqued steel plating finished polyester powder paint black colour, forged effect or silver colour

FIXING Inside container: black non-flammable polyethylen embedded or attached with stainless steel screws

WEIGHT 26 - 30 kg

CAPACITY 62 litres

DISEÑO / DESIGN Gemma Bernal & Associats



SISTEMA DE COLOCACION



elevación / hoisting
(P = 26 / 30 kg)

eslingas de poliéster /
polyester slings

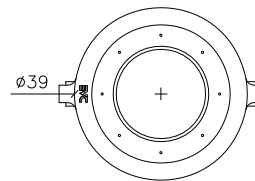
sistema de apertura /
Opening system

empotrado en el pavimento /
build in the pavement

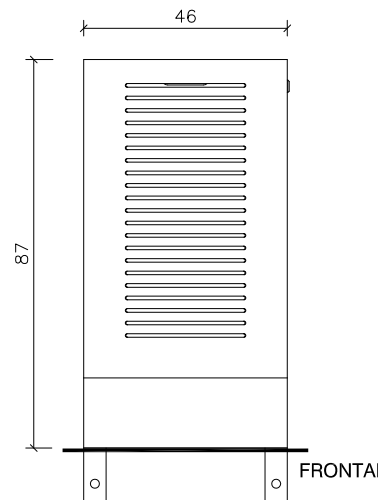
GEOMETRIA

ESCALA 0 CM 25CM

GRUSS CON CENICERO /
GRUSS WITH ASHTRAY



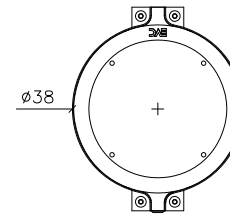
PLANTA



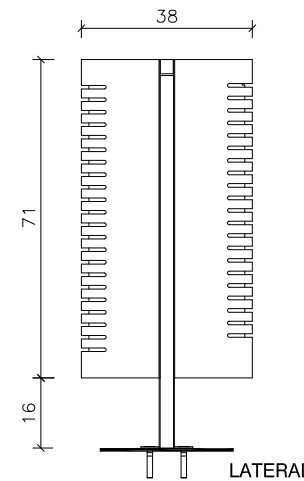
FRONTAL

empotrado en el pavimento /
build in the pavement

GRUSS SIN CENICERO /
GRUSS WITHOUT ASHTRAY



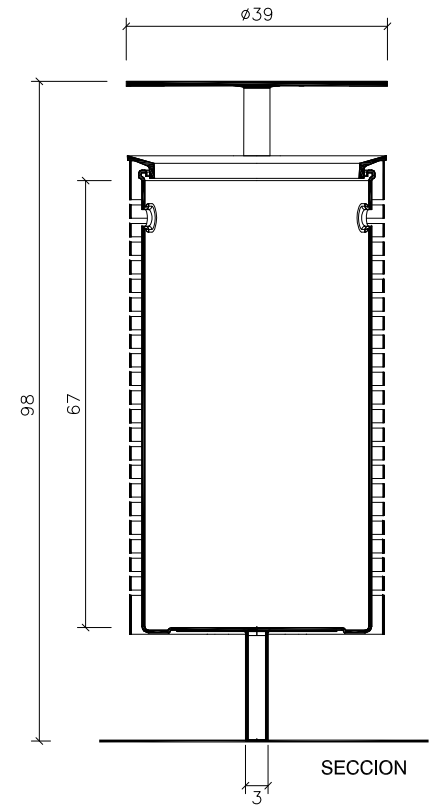
PLANTA



LATERAL

fijada al pavimento /
attached in the pavement

GRUSS CON TAPA /
GRUSS WITH COVER



SECCION