

CARACTERÍSTICAS

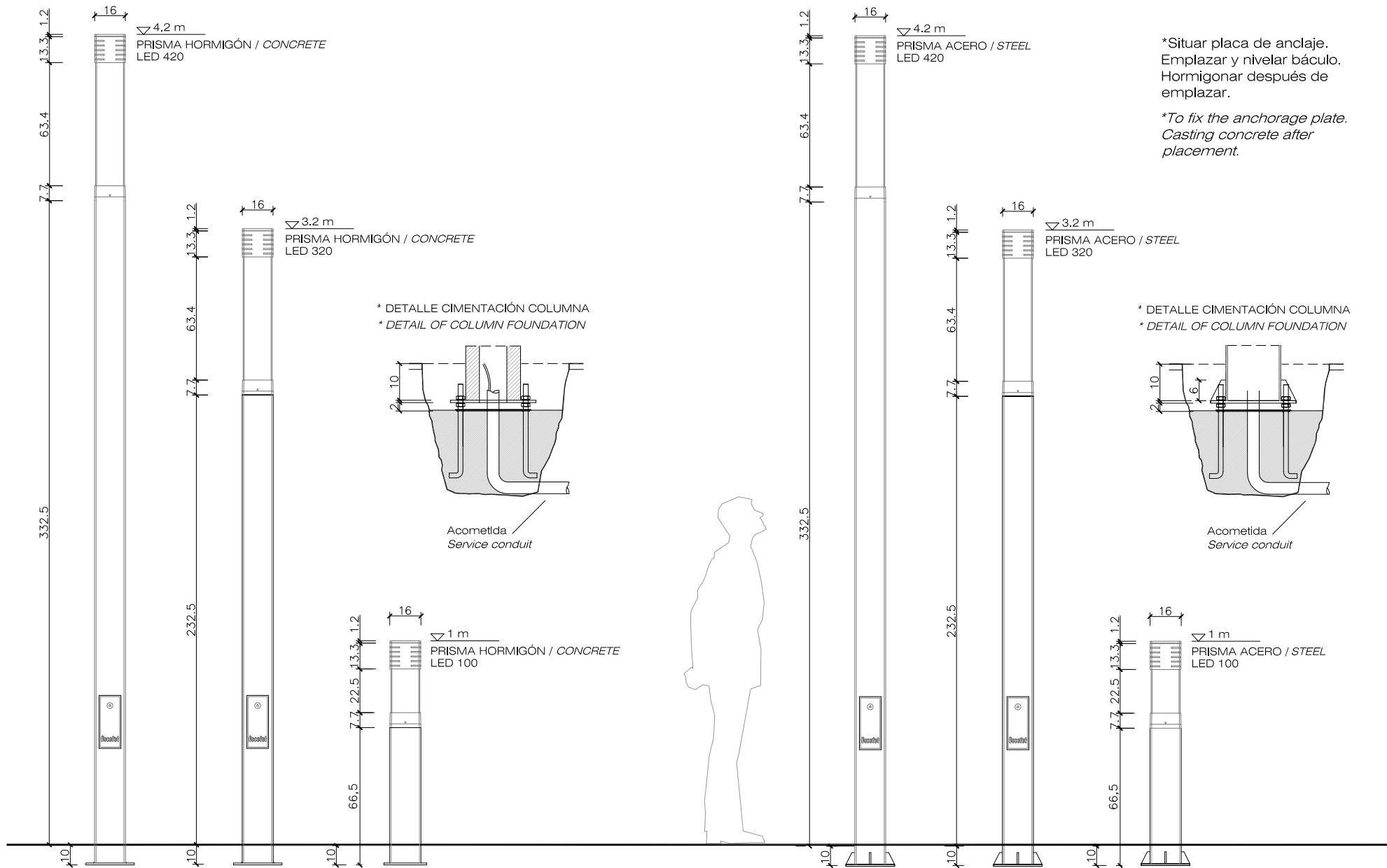
| | |
|------------|---|
| SOPORTE | 1. Hormigón armado (gris granítico, decapado e hidrofugado) 2. Acero zincado pintado |
| COLOCACIÓN | Anclado mediante espárragos roscados y empotrado |
| EQUIPO | Prisma 420/320 - Módulo LED 700 mA 38 W Prisma 100 - Módulo LED 500 mA 29 W |
| DIFUSOR | Polycarbonato extruido y texturado interior Base luminaria y tapa superior de aluminio |
| PESO | 1. 225kg, 170kg, 50kg. / 2. 90kg, 70kg, 20kg / 3. 150kg, 100kg, 35kg |

| | |
|-----------|---|
| MATERIAL | 1. Reinforced cast stone (granite grey, acid etched and waterproofed) 2. Zinc plated steel coated finish |
| FIXING | anchored with threaded studs and embedded |
| EQUIPMENT | Prisma 420/320 - LED Module 700 mA 38 W Prisma 100 - LED Module 500 mA 29 W |
| DIFFUSER | Extruded polycarbonate and textured interior Lighting base and upper cover in aluminium |
| WEIGHT | 1. 225kg, 170kg, 50kg. / 2. 90kg, 70kg, 20kg / 3. 150kg, 100kg, 35kg |

GEOMETRIA

DISEÑO / DESIGN Escofet_lab

E: 0 50 CM



*Situar placa de anclaje.
Emplazar y nivelar báculo.
Hormigonar después de
emplazar.

*To fix the anchorage plate.
Casting concrete after
placement.

CARACTERISTICAS

GRUPO DRIVER

LED. Potencias 29W o 38W
220-240V / 50-60Hz

Io=500mA / Io=700mA

Factor de potencia 0,95

LUMINARIA

2100lm / Temp. color 3000K / CRI>80

Grado protección: LED IP67 / LUM IP65

Óptica: Simétrica o Asimétrica

GROUP OPTIC

LED. Power input 29W or 38W
220-240V / 50-60Hz

Io=500mA / Io=700mA

Power factor 0,95

2100lm / Temperature 3000K / CRI>80

Protection: LED IP67 / LUM IP65

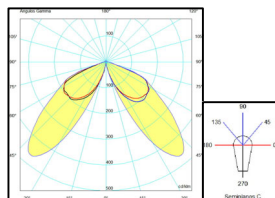
Optics: Symmetric or Asymmetric

SISTEMA DE COLOCACION

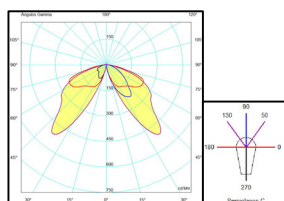
DISEÑO / DESIGN Escofet_lab

E: 0 25 CM

Curva de distribución de la intensidad luminica
Typical light distribution curve

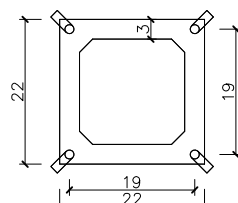


Simétrica / Symmetric

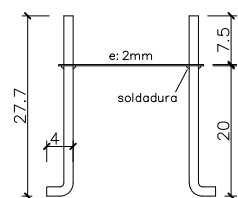


Asimétrica / Asymmetric

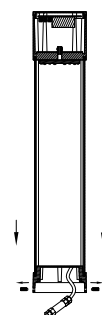
PLACA DE ANCLAJE
ANCHORAGE PLATE



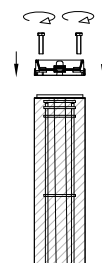
CHAPA INOX AISI304 e:2mm
AISI 304 stainless steel sheet



VARILLA ROSCADA M-14
rod screwed

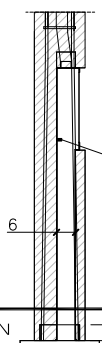


Quitar 4 espárragos M8
Unscrew 4 M8 screws

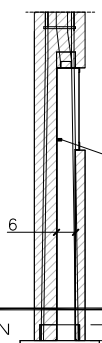


Pasar cable y
conectar alimentación
Feed lead through and
connect power

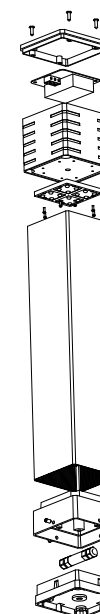
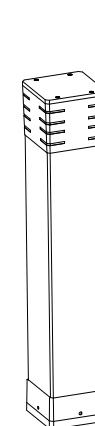
Fijar 4 tornillos M8
Fit 4 M8 screws



HORMIGÓN



ACERO



Tapa Superior
Top cover

Driver LED
Driver LED

Base Superior
Top base

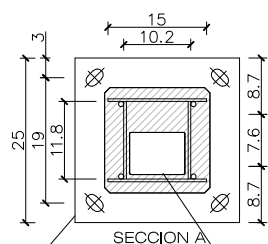
Módulo LED
LED Module

Difusor
Diffuser

Base Inferior
Low base

Conector alim.
Connect power

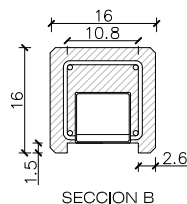
Base Columna
Column base



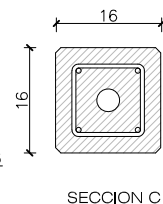
SECCION A

CHAPA INOX e:10mm
stainless steel sheet

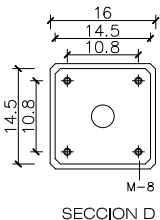
ARMAZON METALICO
metallic framework



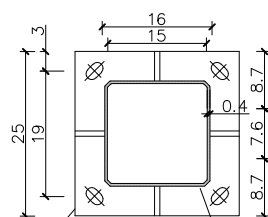
SECCION B



SECCION C



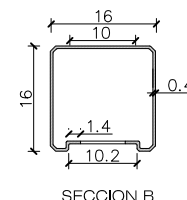
SECCION D



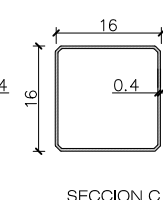
SECCION A

CHAPA INOX e:10mm
stainless steel sheet

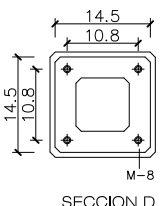
CHAPA ACERO e:4mm
stainless steel sheet



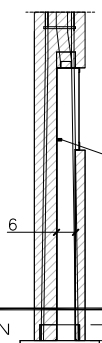
SECCION B



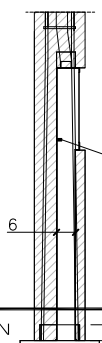
SECCION C



SECCION D



HORMIGÓN



ACERO

D

C

B

A