



Luco Mojón is a boundary marker in which the image is more important than the body, and appearance is more relevant than volume. The front part of the bollard is larger and when the observer moves, it seems to disappear. Its delimiting element is the shovel opposite the cylinder, which offers the largest possible surface area to anyone moving along the street, on foot or in a vehicle. This generates a superimposed effect due to the visual sequence of a series of planes in which the semicircular culmination alleviates its profile.

Steel sheet |  20 cm |  25 kg

 Update 10.10.2018



LUCCO MOJÓN

Helio Piñon 2000

Escofet®

Origin

It is designed to be installed on paved areas with flagstones of 20 x 20 cm so that the support plate replaces a flagstone, making the resulting orientation of the plane of all the bollards homogeneous.

Design

Great value is placed on the ability of its profile to blend into urban landscapes, due to its small dimensions and plausible configuration. The longitudinal plane of the top half of the element alleviates its presence while allowing bicycles to be fixed to it.

Material

It is made from sheet steel with a thickness of 20 mm and a corten effect painted finish.

Installation

It is installed by anchoring to the slab beneath the paving with fat mortar. The recessed support plate is flush with the paving, or alternatively, it can be used as a cover joint on the paving.



LUCO MOJÓN



Escofet®

1. Boundary

Luco Mojón

Dimensions 20 x 20 x 80 (100) cm

Weight 25 kg

1.1 General features

Material Steel sheet **Fixing** Anchored on pavement

Finish Painted "Cor-ten" effect

Colours

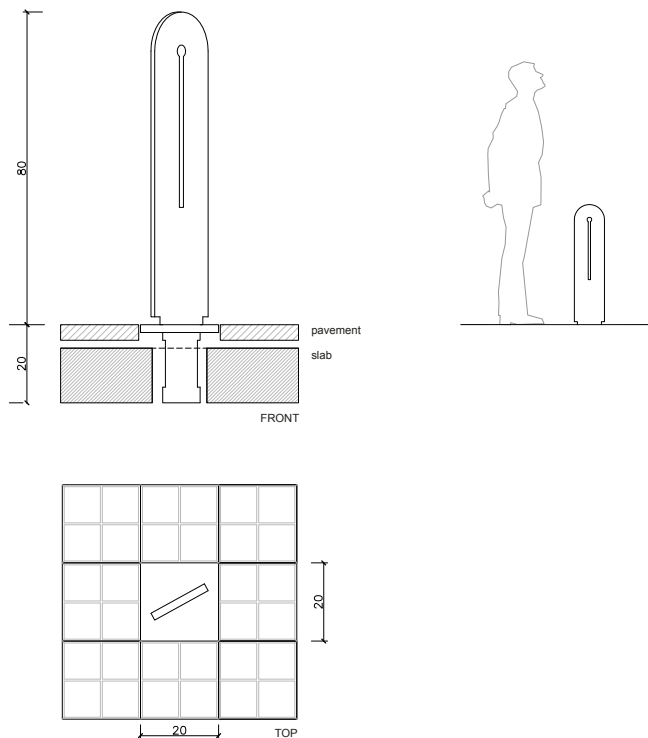


A. Cor-ten

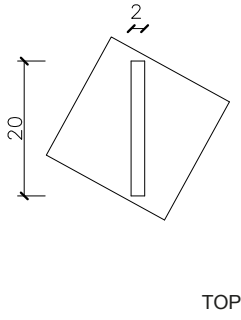
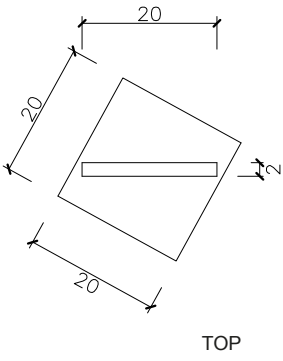
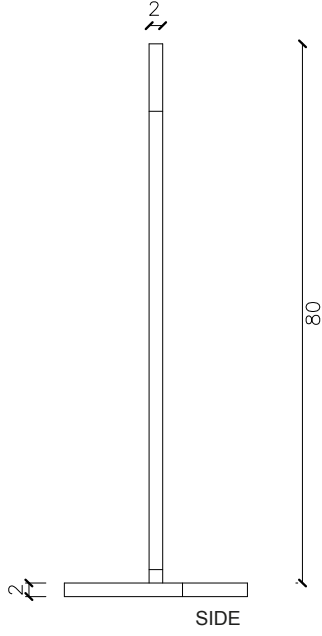
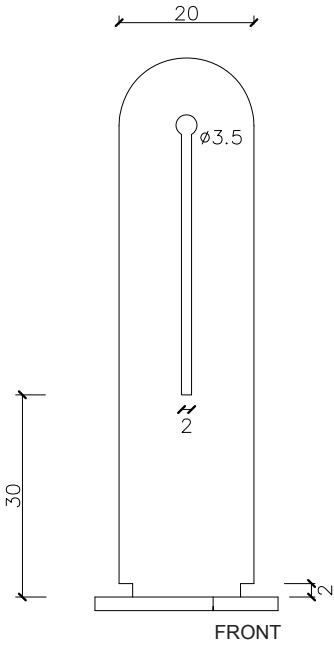
1.2 Installation system

Hoisting
(W=25 kg)

Installation
Drill the concrete base and fill with fast setting mortar.
Example of placement in pavement 20x20 cm.



Luco Mojón





The names, trademarks and industrial models of the products have been logged in the corresponding registers. The technical information provided by Escofet about its products can be modified without prior notice.

Escofet 1886 S.A
Head office and production

Montserrat, 162
E 08760 Martorell
Barcelona - España
T. 0034 937 737 150
F. 0034 937 737 151

info@escofet.com
www.escofet.com

Follow us



GA-2005/0072 SST-0090/2010 ER-0403/2016