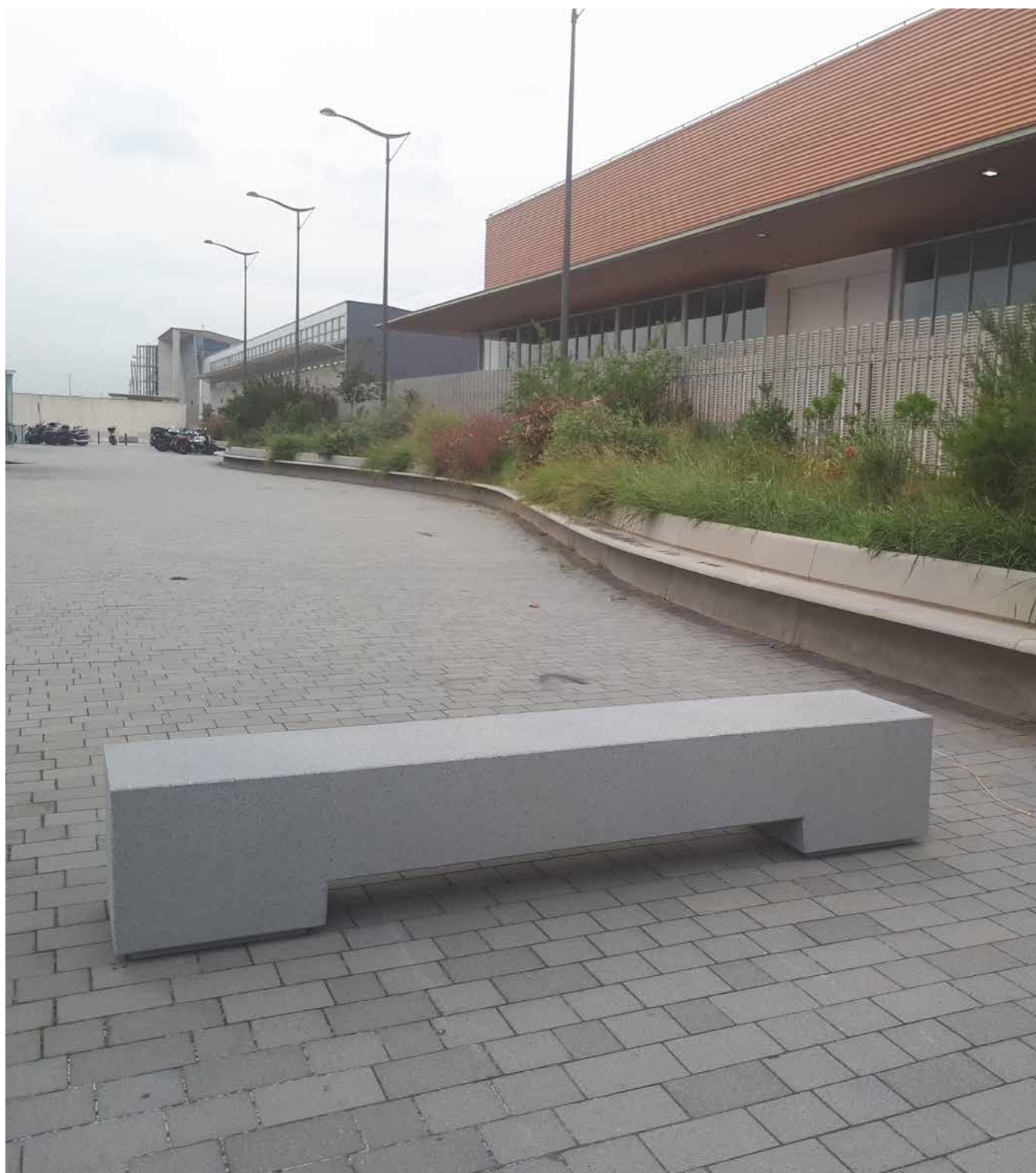


Backless benches and planters act as effective mobile barriers to delimit areas, or as safety elements against traffic, apart from their intrinsic functionality and aesthetic appearance. The anti-intrusion design of *Move* comprises a backless bench with a length of 250 cm and a planter of 200 cm, whose main feature is the central cavity above ground, which makes the element easy to move with a forklift truck.

Concrete | 📏 250 cm | ⚖️ 1075 kg

🔄 Update 24.08.2020



Origin

Based on its etymology, *Move* was conceived as a primarily mobile collection, suitable for creating lasting and ephemeral boundaries in public areas. Due to their weight, they are self-stabilising and can only be moved with a forklift truck.

Design

The rounded and manifestly brutalist appearance is in keeping with the objective of ensuring public safety, which is a growing demand in cities. In agreement and fully compatible with this premise, *Move* is portrayed as having an appearance that blends in well with public areas and brings well-being to citizens, without being intrusive.

Versatility

The collection makes it possible to combine areas with seats and planters with capacities of 300 litres, thus promoting the use of green elements and achieving an attractive, comfortable public area. Their geometry, weight and shock resistance convert both models into dissuasive elements, to reduce risk and minimise the impact of attacks by vehicles.

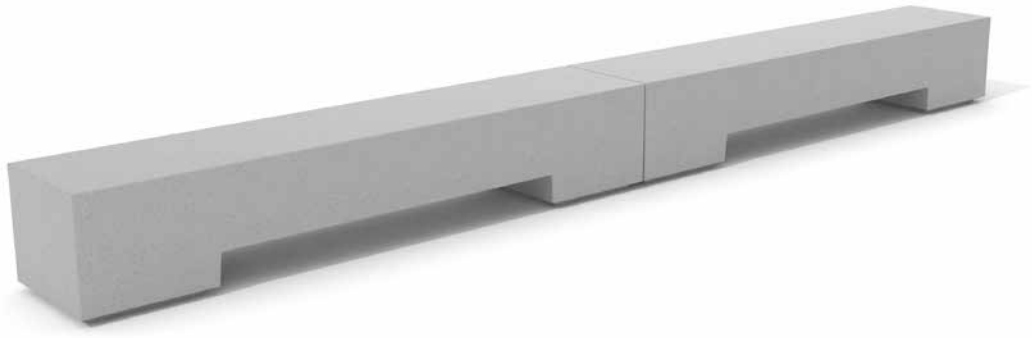
Material

Made from acid-etched, water-repellent cast concrete in the *Escofet* standard chart colour. Optionally, also available in Eco-Grey® or Eco-Black® recycled concrete.

Installation

Self-stabilising and made from a single block, it is installed by simply resting it on the ground.





1. Protection element

Move	Backless bench
-------------	-----------------------

Dimensions	250 x 50 x 45 cm
-------------------	------------------

Weight	1075 kg
---------------	---------

1.1 General features

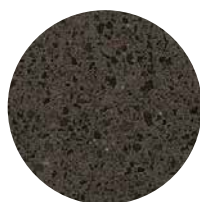
Material	Concrete Recycled concrete	Fixing	Free-standing
-----------------	-------------------------------	---------------	---------------

Finish	Etched and waterproofed
---------------	-------------------------

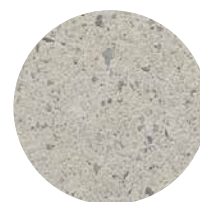
Colours



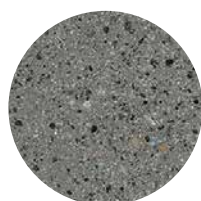
GR. Grey



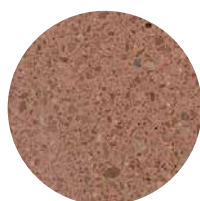
NG. Black



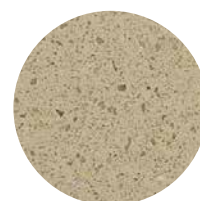
BL. White



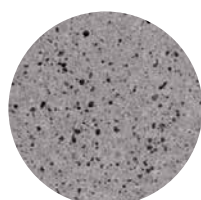
CA. CA Grey



RA. Red



BG. Beige



EGR. Eco-Grey®



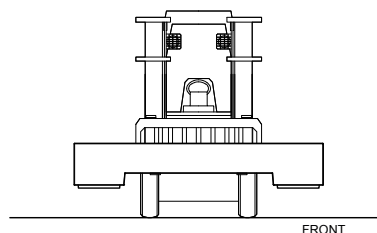
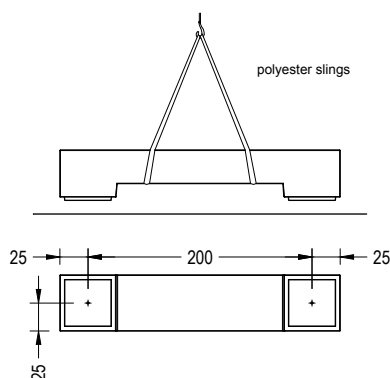
ENG. Eco-Black®

1.2 Installation system

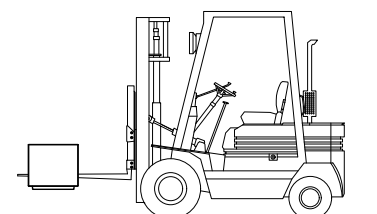
Hoisting

W= 1075 kg

2 recessed bushings for optional anchoring (M16)



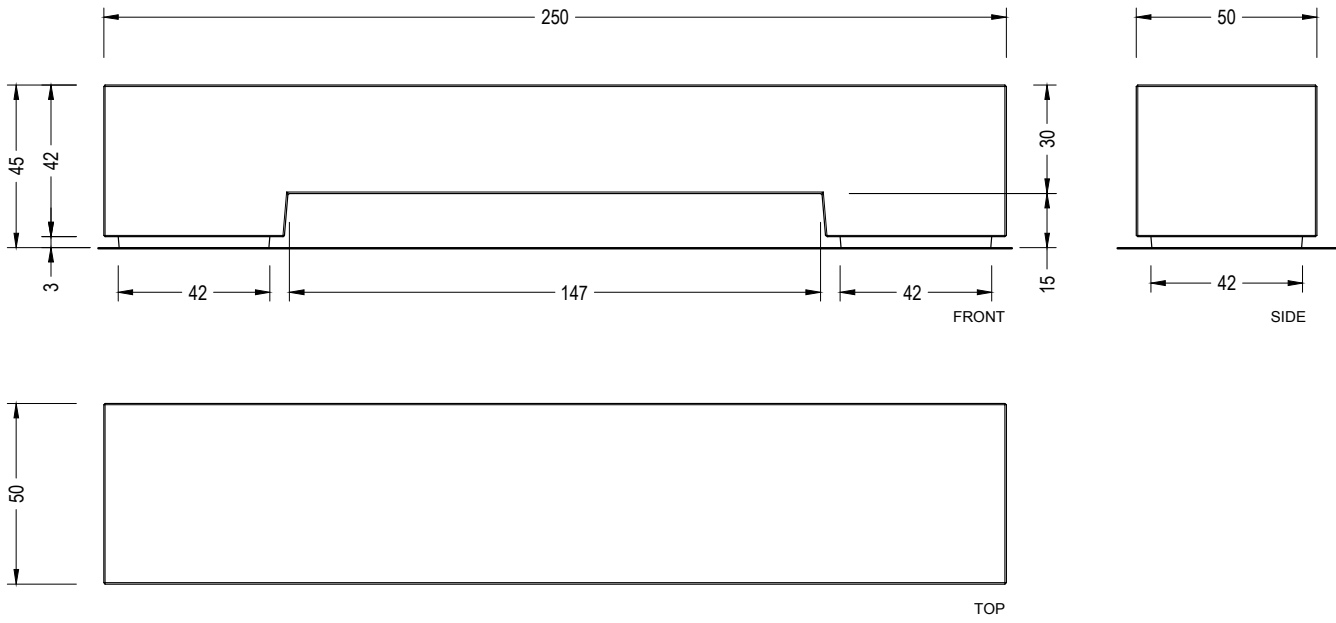
FRONT



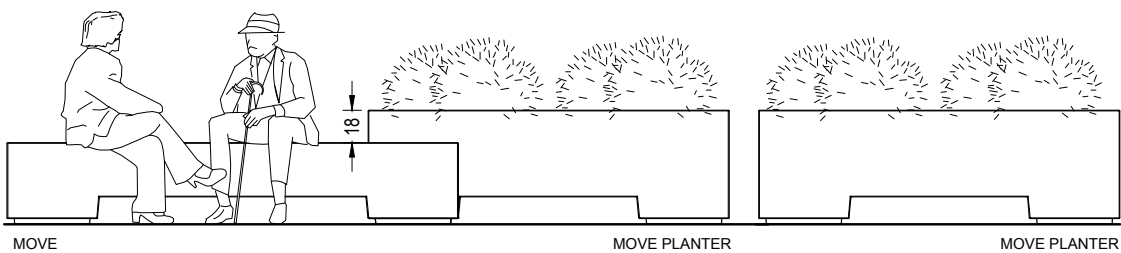
SIDE

1.3 Geometry

Move backless bench



Aggregation



2. Planter

Move	Planter
-------------	----------------

Dimensions	200 x 60 x 63 cm
-------------------	------------------

Weight	875 kg
---------------	--------

Capacity	300 kg
-----------------	--------

2.1 General features

Material	Concrete Recycled concrete	Fixing	Free-standing
-----------------	-------------------------------	---------------	---------------

Finish	Etched and waterproofed
---------------	-------------------------

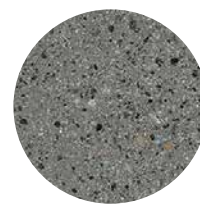
Colours



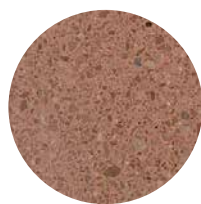
GR. Grey



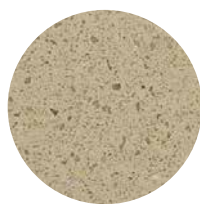
BL. White



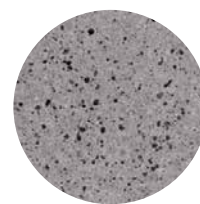
CA. CA Grey



RA. Red



BG. Beige



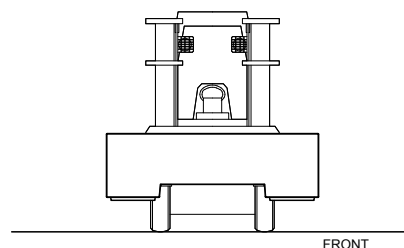
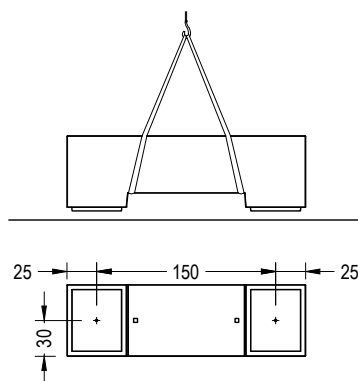
EGR. Eco-Grey®

2.2 Installation system

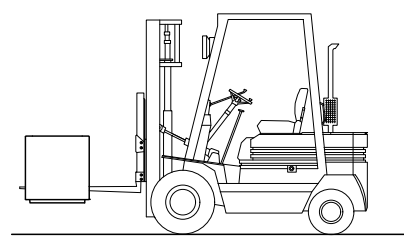
Hoisting

W= 875 kg / weight with soil W= 1385 kg

2 recessed bushings for optional anchoring (M16)



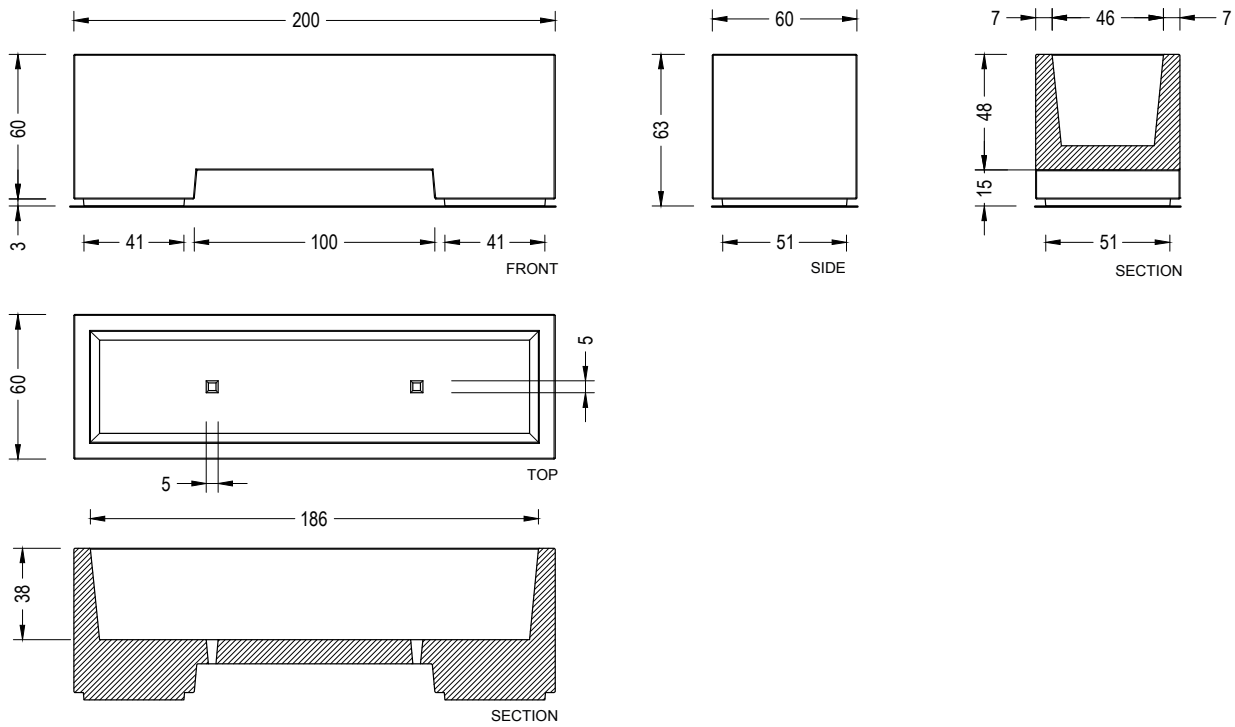
FRONT



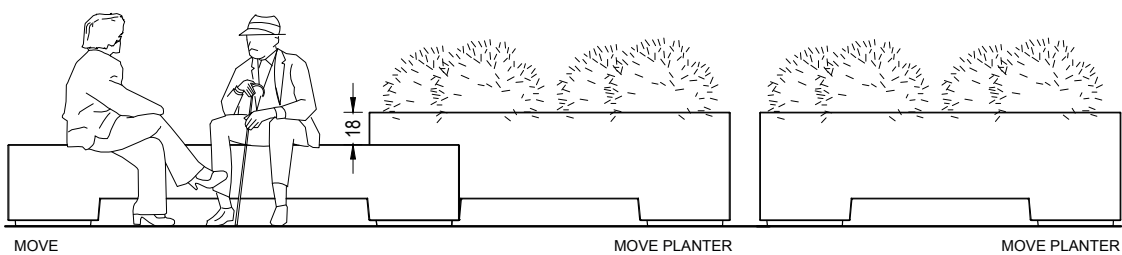
SIDE

2.3 Geometry

Move Planter



Aggregation





Warranty

5 years in concrete elements.

The names, trademarks and industrial models of the products have been logged in the corresponding registers. The technical information provided by Escofet about its products can be modified without prior notice.

Escofet 1886 S.A
Head office and production

Montserrat, 162
E 08760 Martorell
Barcelona - España
T. 0034 937 737 150
F. 0034 937 737 151

info@escofet.com
www.escofet.com



GA-2005/0072 SST-0090/2010 ER-0403/2016