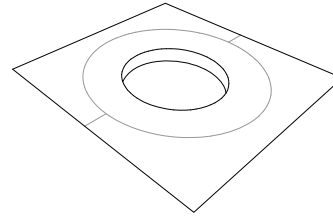


CARACTERISTICAS

MARCO hormigón armado
 COLOR gris granítico
 ACABADO decapado e hidrofugado
 PESO 402 kgs
 COLOCACIÓN empotrado a nivel pavimento
 PALET 70 x 130 / 2uds

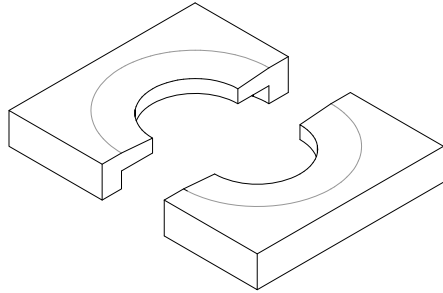
MATERIAL *reinforced cast stone*
 COLOUR *granite grey*
 FINISH *acid-etched and waterproofed*
 WEIGHT *402 kgs*
 FIXING *embedded at paving level*
 PALLET *70 x 130 / 2units*

DISEÑO / DESIGN Miquel Espinet / Antoni Ubach



ALCORQUE ICARIA®

SISTEMA DE COLOCACION



GEOMETRIA

E 0 CM 25 CM

EJEMPLO DE COLOCACION

