


Naguisa is a series of four modular arc-shaped benches with a diameter of 7,50 or 11 metres and the capacity to transform spaces into a harmonious landscape through its mere presence. Its gentle curves evoke the current of a river that wishes to awaken the imagination of its users.

Concrete |  423 cm/max |  2600 kg |  5/ud.

 Update 04.12.2017



NAGUISA

Toyo Ito 2004

Iscofet®

Origin

The curved traces of foam left by the sea on the beach (*Naguisa* in Japanese) is an underlying source of inspiration. The first edition was originally made to be installed in the Island City Central Park of Fukuoka in Japan, based on the design of the architect Toyo Ito.

Design

It is based on a circular arc-shaped design with a length of 4 metres, whose curved, excavated surface creates different spaces that organically fulfil the function of a seat. The central, higher part of the bench, with its sinuous shape, is used as a back and armrest. The bottom part of the unit is excavated in a casual way that allows the different light reflections to give the sensation of a living being.

Modular

The aggregation of its curved arcs permit the construction of closed circles with diameters of 7.50 and 11 metres. It can also be organised in a continuous zigzag arrangement that is enhanced by alternating the direction of the circular arcs.

Versatile

The top part of the back has a height of 63 centimetres, which is also perfect for a person who is standing to use it as a support.

Material

Moulded concrete reinforced with stainless steel and a double finish. Etched finish in the seat part and a shiny polished finish on the back, with a sinuous shape.

Installation

The *Naguisa* bench is installed by simply allowing it to rest on the paving.







Escofet asked us for a flexible design that could be adapted to a variable range of situations.

In the development we studied different polished and rough textures until all the details were defined, including the specific colour of the concrete in a vibrant white tone similar to that of sea foam.



The concrete modules have hollow parts with a rough textured finish and are used as seats. In contrast with this, the top part of the continuous curved back has a polished, shiny finish.



1. Landscape Furniture

Naguisa	R375 a	R375 b	R550 a	R550 b
Dimensions	378x120x38 (63) cm	378x125x38 (63) cm	423x120x38 (63) cm	423x116x38 (63) cm
Weight	2450 kg	2250 kg	2750 kg	2600 kg

1.1 General features

Material	Concrete	Fixing	Free-standing
Finish	Etched and waterproofed		

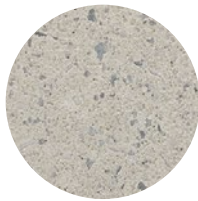
Colours



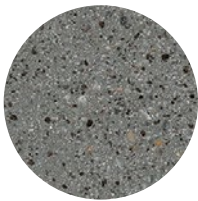
GR. Grey



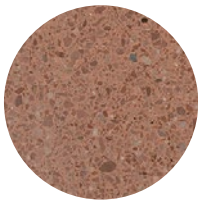
NG. Black



BL. White



CA. CA Grey



RA. Red

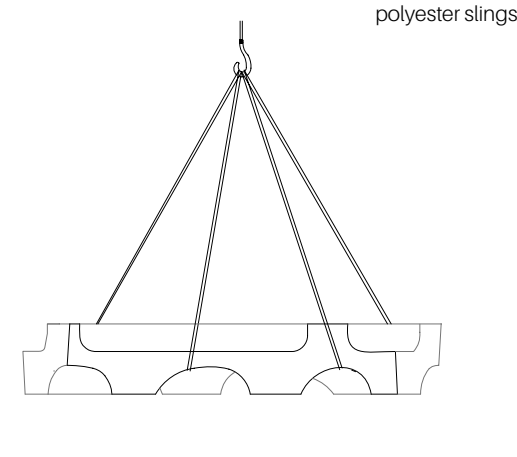


BG. Beige

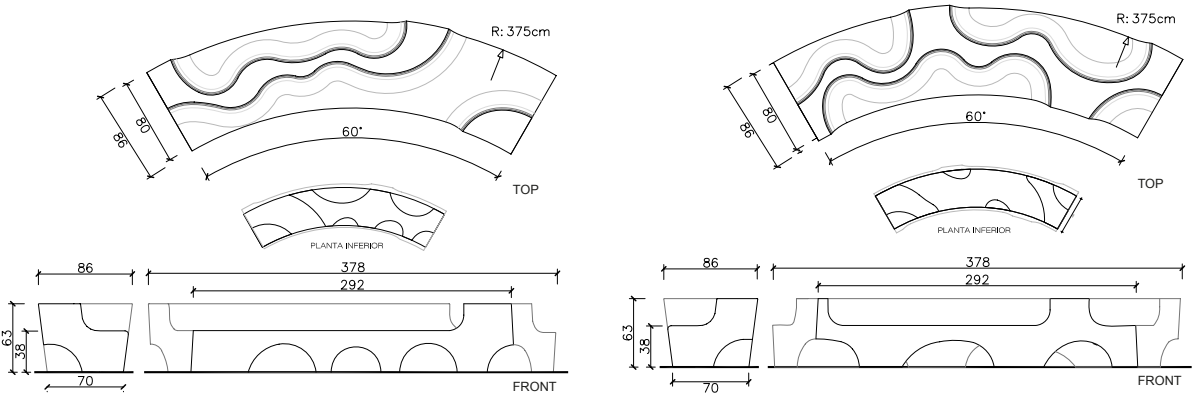
1.2 Installation system

Hoisting

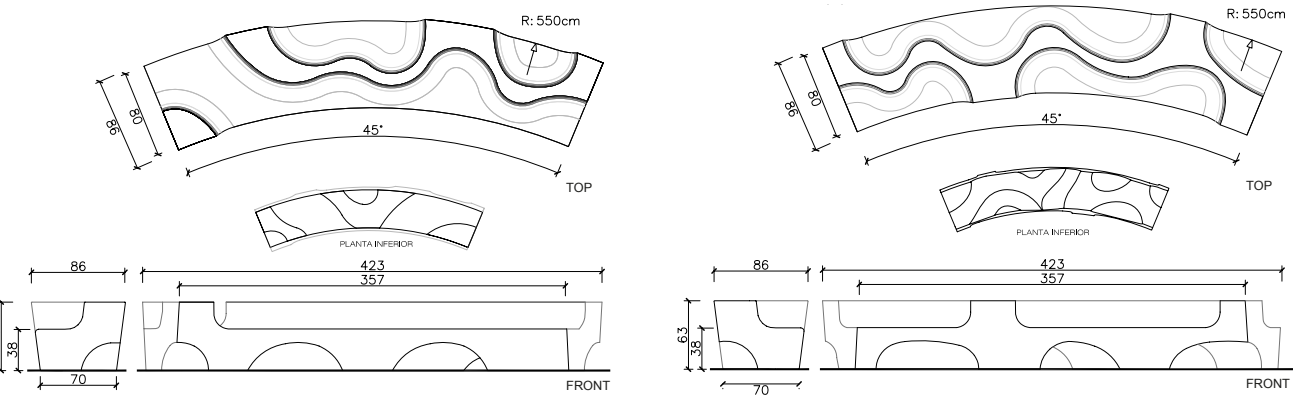
(P= 2450 / 2250 kg / 2750 kg / 2600 kg)



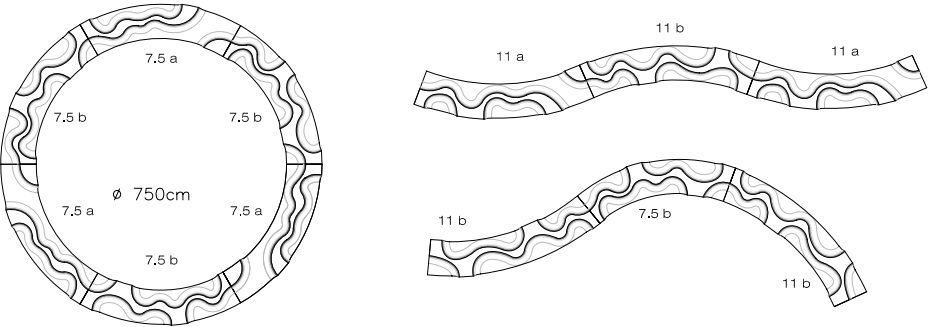
Naguisa R375 a / R375 b



Naguisa R550 a / R550 b



Agregations





Warranty

5 years in all its components.

The names, trademarks and industrial models of the products have been logged in the corresponding registers. The technical information provided by Escofet about its products can be modified without prior notice.

Escofet 1886 S.A
Head office and production

Montserrat, 162
E 08760 Martorell
Barcelona - España
T. 0034 937 737 150
F. 0034 937 737 151

info@escofet.com
www.escofet.com

Follow us



GA-2005/0072 SST-0090/2010 ER-0403/2016