

The closed configuration of the *Binocular* bench provides an intimate refuge from inclement weather conditions for users, enabling them to sit in different positions, individually, in twos or in small groups

Concrete | Steel |  261 cm/max |  1960 kg |  3

 Update 08.08.2019



Origin

Originally designed for the town of Haarlemmermeer, they were first installed on the green hills overlooking Hoofddorp and the polders of Schiphol.

Functional

Binocular is a cosy concrete shelter with rounded lines that seeks an emotional relationship between the user and their surroundings, with the aim of being useful and comfortable.

Landscape element

With a clear reference to a pair of binoculars, framing the views and generating the visual effect of a vantage point. The model levitates on its metal supports, which vanish in the distance, making the volumes appear to be floating in space.

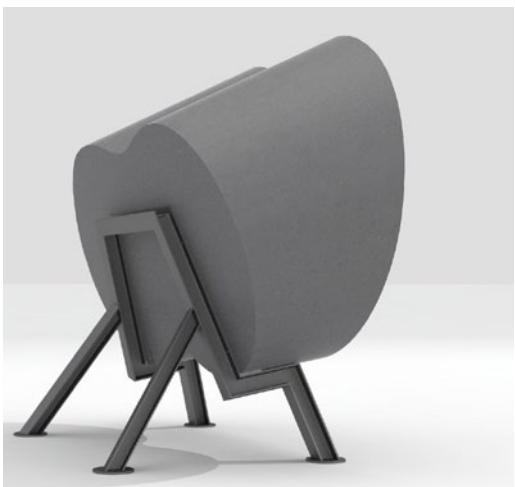
Material

Moulded concrete reinforced with stainless steel with a gentle etched finish in the *Escofet* standard chart colours. Metal support with laminated steel profile H-100, zinc-plated and steel forge black coloured.

Installation

It is easy to install by anchoring to the paving with eight expansion bolts M-12x110 mm, two in each anchor point.





1. Landscape furniture

Binocular

Dimensions 261 x 133 x 50 (213) cm

Weight 1960 kg

1.1 General features

Material Reinforced concrete Fixing Anchored with expansion bolts

Finish Etched and waterproofed

Supports Laminated steel profile H-100 Finish Zinc-plated and forge black colored

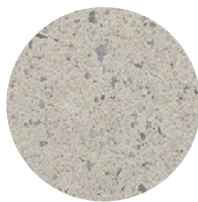
Colours



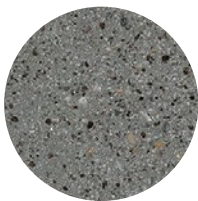
GR. Grey



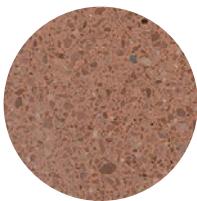
NG. Black



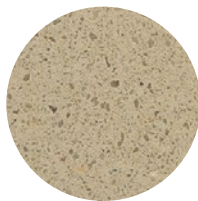
BL. White



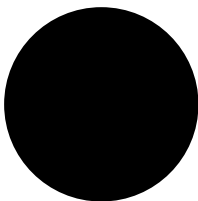
CA. CA Grey



RA. Red



BG. Beige

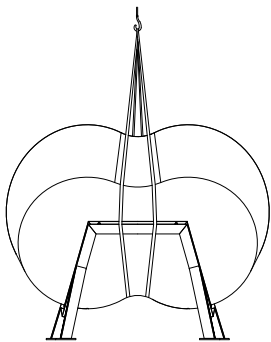


A. Forge black colored

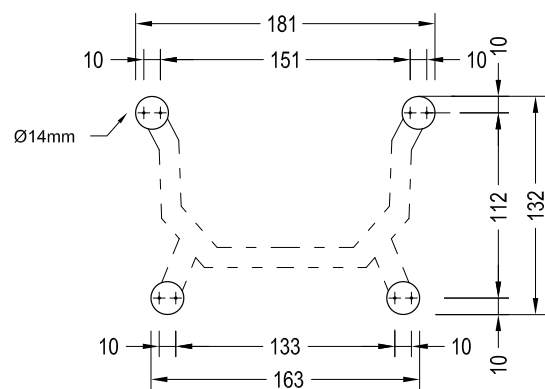
1.2 Installation system

Hoisting (W=1960 Kg)

Installation Anchored with 8 M-12x110 mm expansion bolts. Lifting by polyester slings.

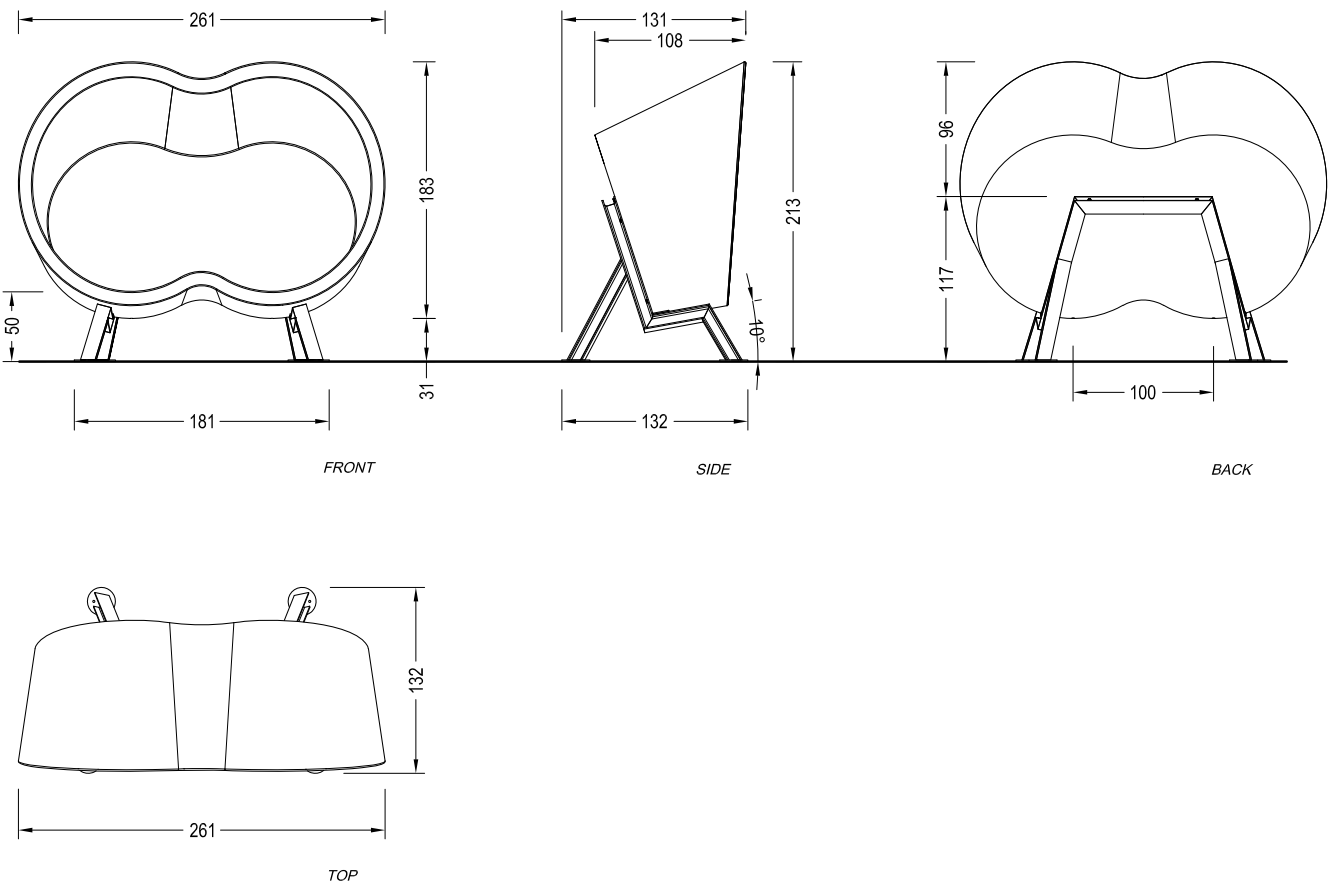


Plant location



1.3 Geometry

Binocular





Warranty

5 years in concrete elements.

The names, trade marks and industrial models of the products have been deposited in the corresponding registries. The technical information provided by Escofet about its products may be modified without prior notice.

Escofet 1886 S.A
Central office and production

Montserrat, 162
E 08760 Martorell
Barcelona - España
T. 0034 937 737 150
F. 0034 937 737 151

info@escofet.com
www.escofet.com



GA-2005/0072 SST-0090/2010 ER-0403/2016