


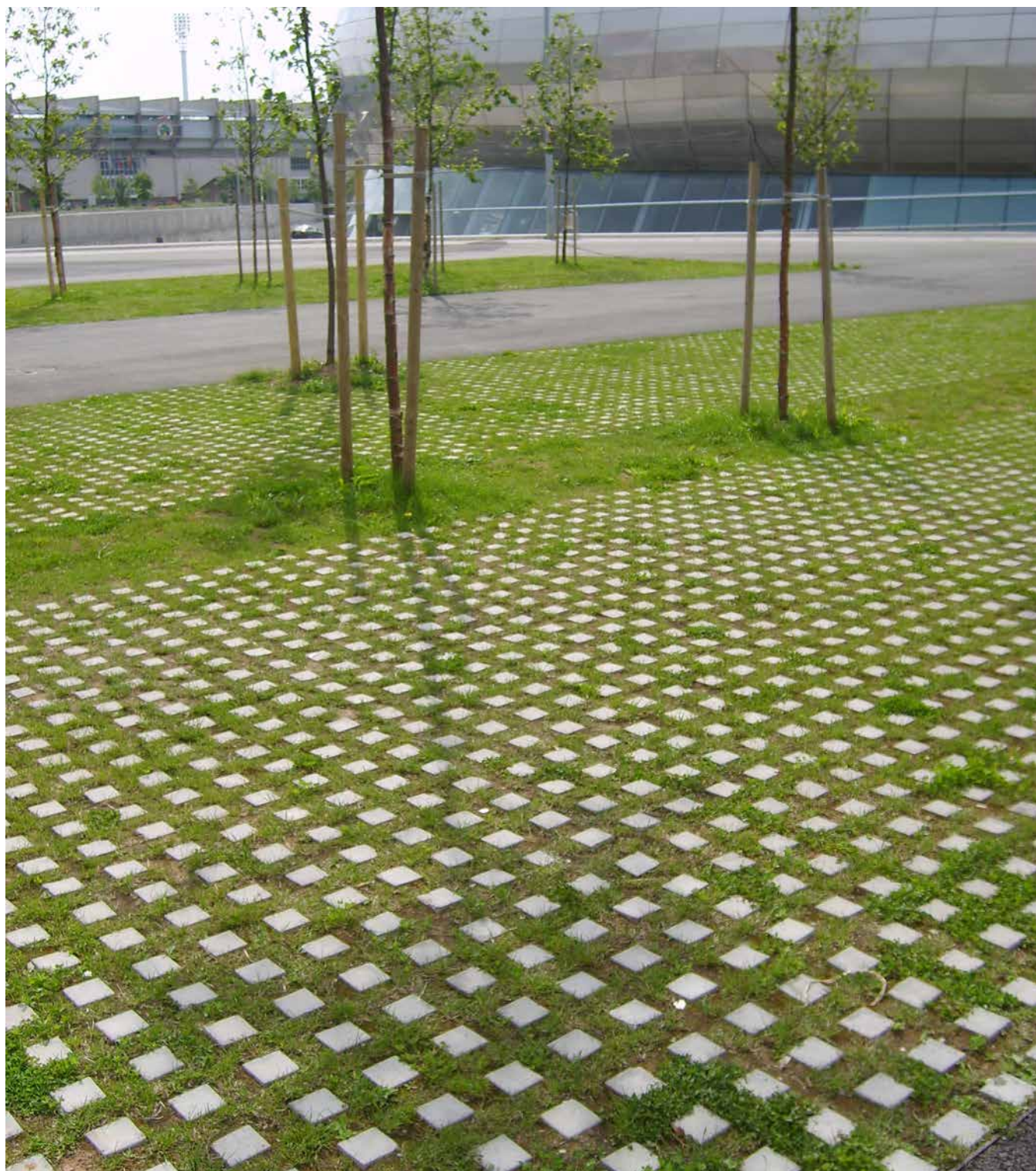


Checkerblock is a vibro-moulded, reinforced concrete cast stone grid paving system that acts as a semi-vegetative blanket on a horizontal or sloped surface. It can also be adapted to gently undulating reliefs. 30% of its surface area is hard and in the form of a checkerboard and the other 70% is formed by openings filled with lawn or sand. It is suitable for planting grass blankets in urban environments, preventing the formation of puddles and protecting it from erosion caused by the presence of pedestrians, and the occasional presence of light vehicles with a maximum load of 900 kg per wheel.

Concrete |  61 cm |  41,5 kg

 Update 05.08.2020



Origin

True to its name, *Checkerblock* is presented as an element that creates a checkerboard in urban space, confining the fertile substrate on which the grass grows.

Design

The square geometry of each piece is in the form of a mesh that contains 16 paving stones connected to each other by concrete ribs hidden beneath the vegetation. Their cross section permits the optimum development and growth of the grass which colonises the empty spaces in different Grassing proportions. Due to its high drainage capacity, it maintains the natural rainwater cycle, re-injecting it into the water table.

SRI and Grassing coefficient

The Solar Reflectance Index by UV, visible and near infrared spectrophotometry pursuant to the ASTM E903 standard, obtains a result of SRI=38.2%. The Grassing permeability coefficient is 70% according to measurements contrasted in test laboratories.

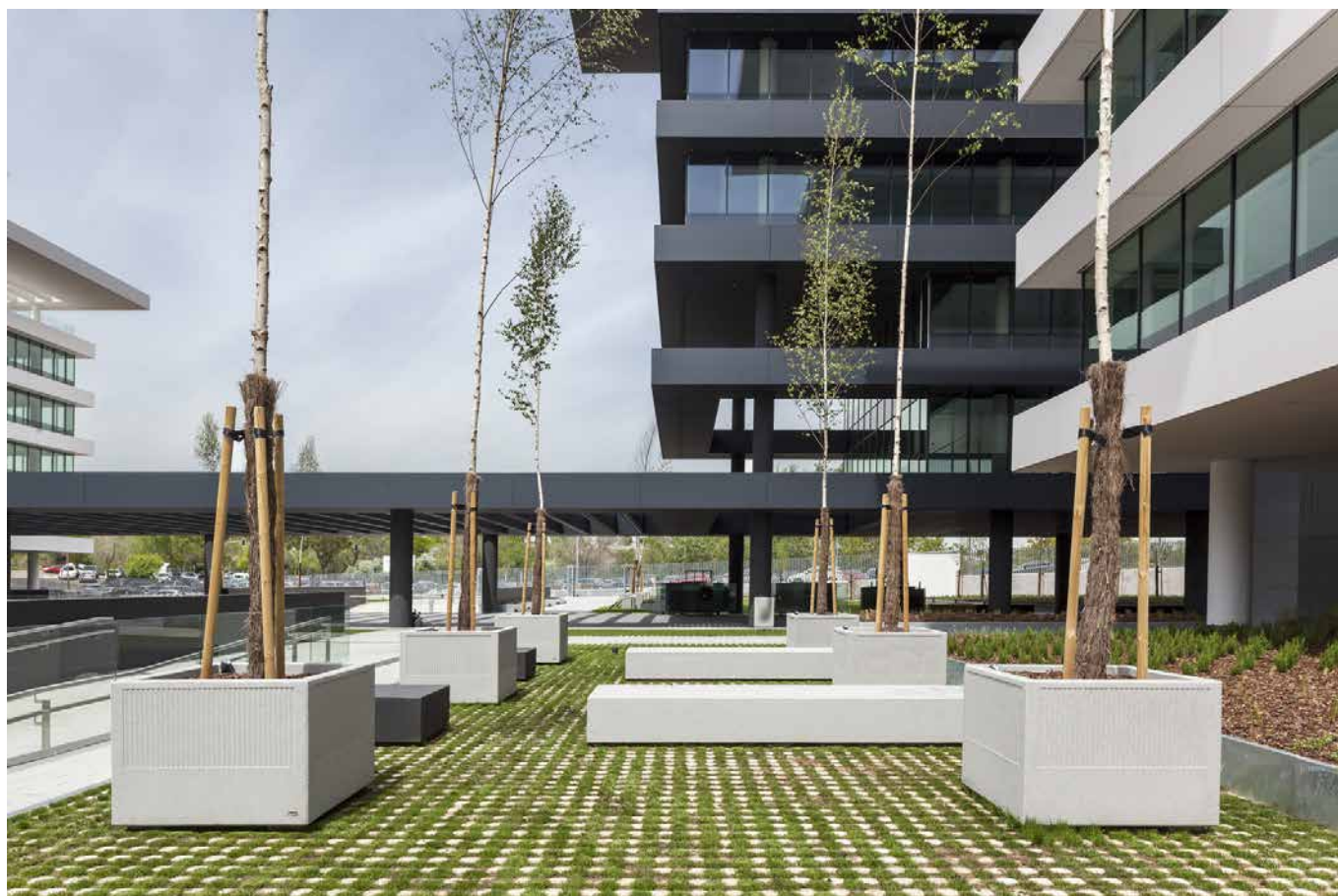
Material

Vibro-moulded reinforced concrete paving stones in a 61x61 cm format and with a thickness of 10 cm, with a moulded finish and a fine smooth texture in two optional colours; grey and beige.

Installation

They are laid on a bed of compacted sand with a thickness of 4-6 cm, which in turn is spread over a bed of levelled P.M 95% compacted soil (UNE 103-501-94). It is then filled with topsoil before sowing, or just with sand.

CHECKERBLOCK



Iscofet®

CHECKERBLOCK



1. Pavement

Checkerblock

Dimensiones 61 x 61 x 10 cm

Peso 41,5 kg

1.1 General features

Material Wet cast reinforced concrete Fixing Over sand bedding

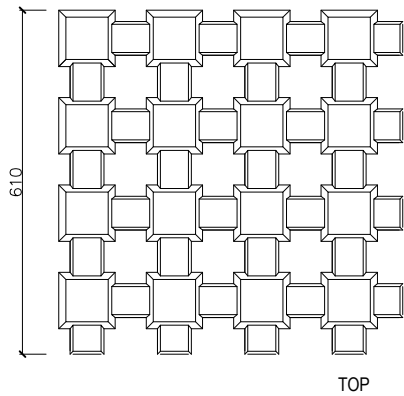
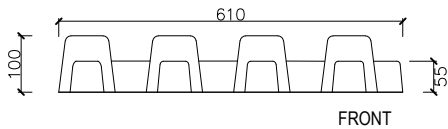
Finish Out of mould Regulation UNE-EN 1339/2004

Colours

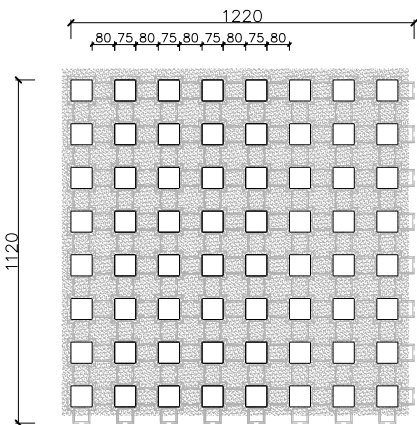
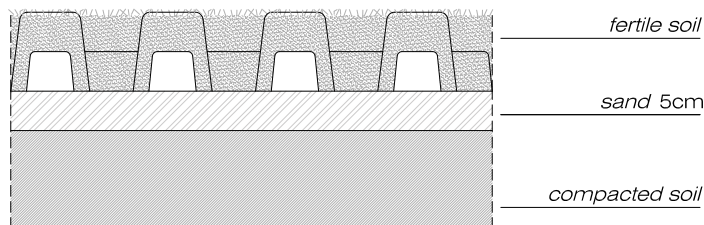


GR. Grey

1.2 Geometry



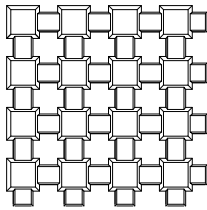
Fixing



1.3 Physical Properties

CHECKERBLOCK

Checkerblock



PROPERTIES

DEMANDING
MORE CLASS

Thickness		Class 3 Marked R $\pm 2\text{mm}$	10 cm
Tolerances		Class 3 Marked R $\pm 1\text{mm}$	$\pm 3\text{ mm}$
Bend strength		Class 3 Marked U < 5MPa	+5MPa
Water absortion		Class 2 Marked B < 6%	6%
Frost resistance		Class 3 Marked D < 1,0Kg/m2	< 1,0Kg/m2
Friction Wear resistance		Class 4 Marked 1 < 20mm	$\pm 19\text{ mm}$
Breaking load		Not required	8 kN (814 kg)
Slip resistance		Class 3 Rd > 45	Rd > 45
Type of traffic		Not required	Pedestrian / Service vehicles occasional passing until 900kg per wheel.
Unshaded		Not required	Low
Photocatalytic treatment		Not required	Optional



Warranty

5 years in all its components.

The names, trademarks and industrial models of the products have been logged in the corresponding registers. The technical information provided by Escofet about its products can be modified without prior notice.

Escofet 1886 S.A
Head office and production

Montserrat, 162
E 08760 Martorell
Barcelona - España
T. 0034 937 737 150
F. 0034 937 737 151

info@escofet.com
www.escofet.com



GA-2005/0072 SST-0090/2010 ER-0403/2016