




As its name suggests, *Box* is a basic backless bench that explores concepts already anticipated in other *Escofet* products. A moulded concrete parallelepiped with clean edges that levitates above its own shadow. The embedded complements of teak wood seat or HPL laminate, compatible with *Box 200*, provide comfort and colour to the collection.

Concrete |  250 cm/max |  1326 kg |  5

Add-ons:  | 

 Update 25.02.2021



Modular

A modular backless bench with a width of 50 cm and variable lengths based on the 50 cm module. With lengths of 250, 200, 150, 100 and 50 cm.

Ecological

Environmentally-sustainable product with an external natural stone finish using local recycled aggregates, in a formulation that replaces the use of natural aggregates. Eco-Grey® and Eco-Black®, with the CE marking.

Material

Moulded concrete, etched finish with recycled aggregate option. Eco-Grey® with recycled concrete aggregates for models manufactured in grey and Eco-Black® with aggregates from iron and steel slag with a high specific weight, an improved wear parameter and high resistance to freeze-thaw cycles. Optional seat made of solid Teak wood slats, jointed with black elastomer. A second seat option with HPL sheet in colour under request.

Installation

Resting on the paving, and optionally anchored with two screws threaded through sleeves recessed in base. Sunken baseboard with sling mounting holes to facilitate transport and installation.





1. Backless bench

Box	50	100	150	200	250
Dimensions	50 x 50 x 45 cm	100 x 50 x 45 cm	150 x 50 x 45 cm	200 x 50 x 45 cm	250 x 50 x 45 cm

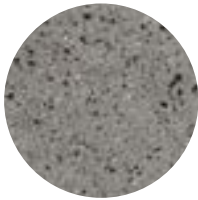

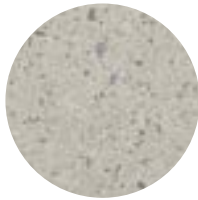
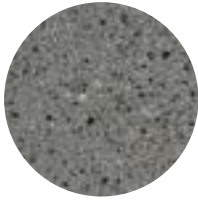

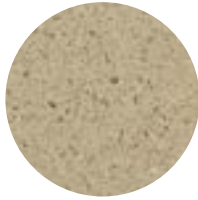
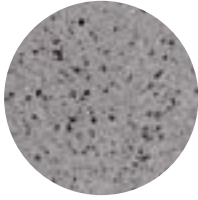

Weight	265 kg	530 kg	795 kg	1060 kg	1326 kg
--------	--------	--------	--------	---------	---------

1.1 General features

Material	Concrete Recycled concrete	Fixing	Free-standing Anchored with screws
----------	-------------------------------	--------	---------------------------------------

Finish	Etched and waterproofed
--------	-------------------------

Colours

		
GR. Grey	NG. Black	BL. White
		
CA. Grey CA	RA. Red	BG. Beige
		
EGR. Eco-Grey®	ENG. Eco-Black®	

1.2 Accessories Box 200 specifications

Material	Teak Wood
----------	-----------

Colours

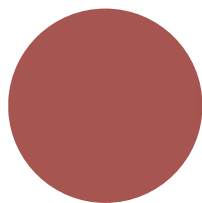

A. Teak

1.2 Accessories Box 200 specifications

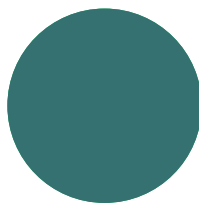
Material High Pressure Laminated HPL

Finish Embossing matt

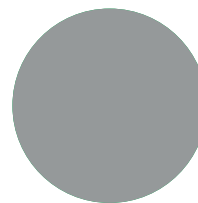
Colours



A. Terracotta

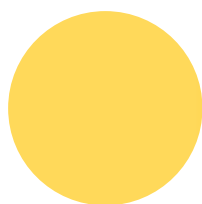


B. Petrol Green

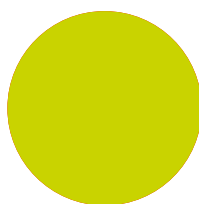


C. Medium Grey

*The color may not be exactly the same as the final product.



D. Golden Yellow



E. Yellowish Green



F. HPL - Enigma Wood

1.2.1 HPL technical features

Description Panels are duromer high-pressure laminates in accordance with EN 438-6 Type EDF. Double-hardened acrylic PUR resins provide extremely effective weather protection.

Weather resistant EN ISO 4892-2

Lightfastness EN ISO 4892-3

Impact resistant EN ISO 178

Temperatures resistant -80°C a 180°C DMTA- OFI 300.128

Scratch resistant Yes

Solvent resistant Yes

Hail resistant Yes

Easy to clean Yes

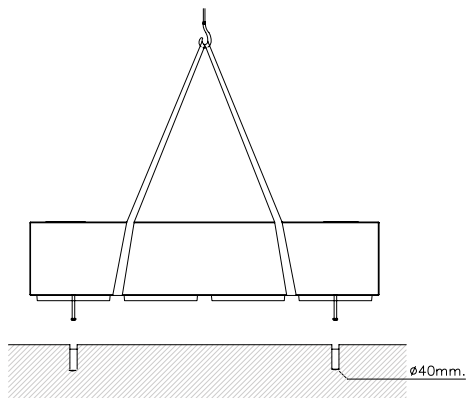
1.3 Installation system

Hoisting

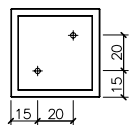
(P=265 kg / 530 kg / 795 kg / 1060 kg / 1326 kg)

Installation

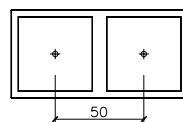
Drill pavement $\varnothing 40 \times 180$ mm and fill with resin or fat mortar. Tightly screw the 2 stud bolts Din 931 M16 x 140 mm. Center and caulk the bench foot all around.



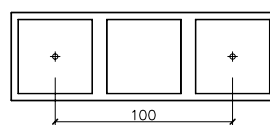
BOX 50



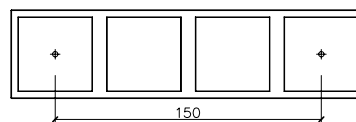
BOX 100



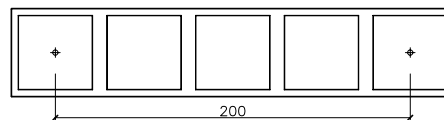
BOX 150



BOX 200

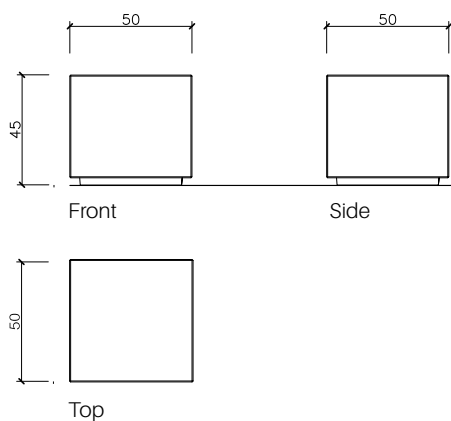


BOX 250

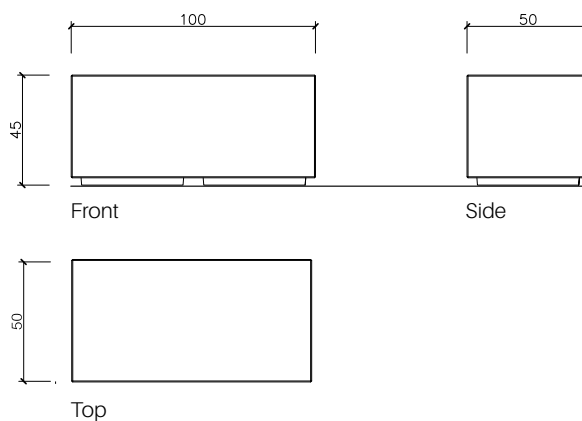


1.4 Geometry

Box 50

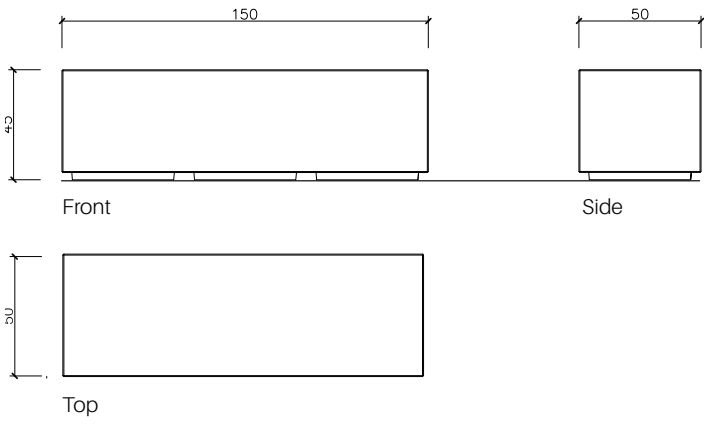


Box 100

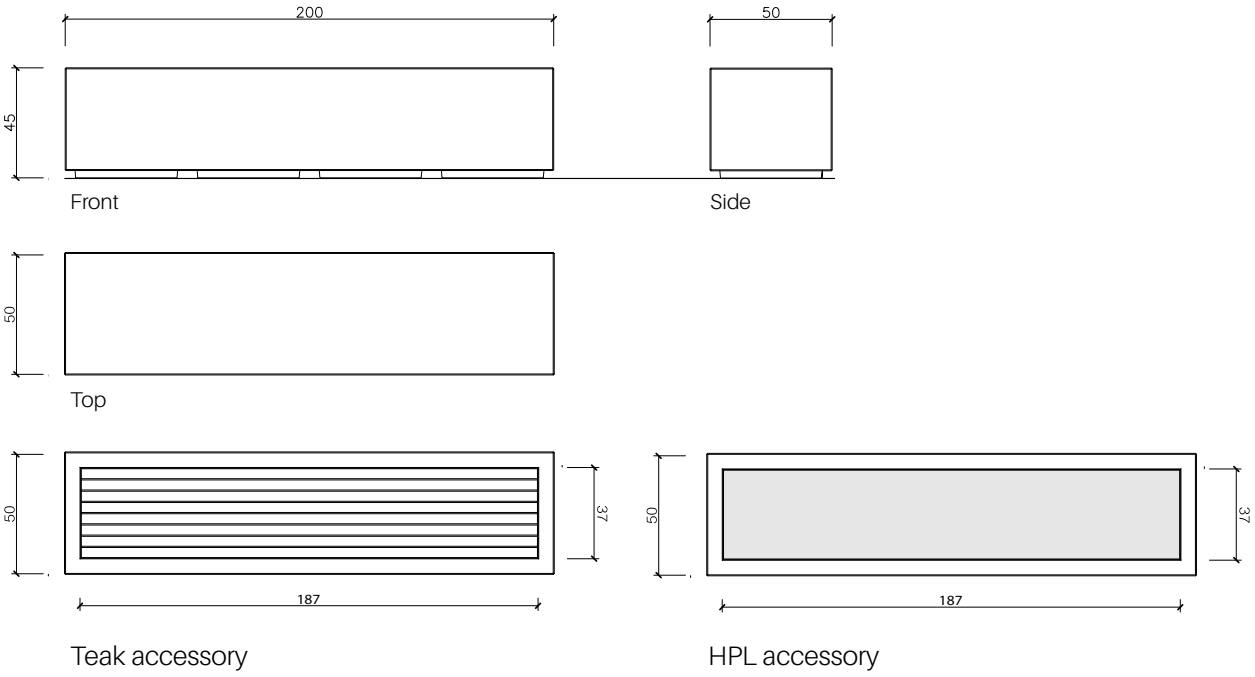


1.4 Geometry

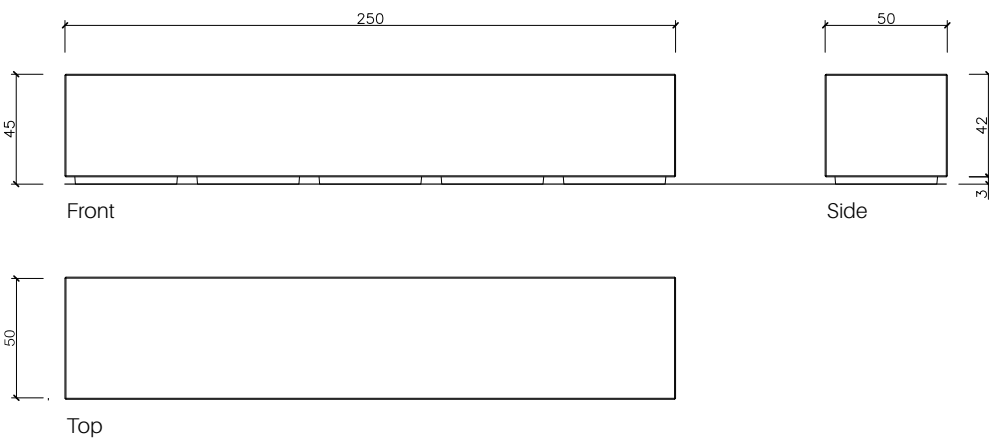
Box 150



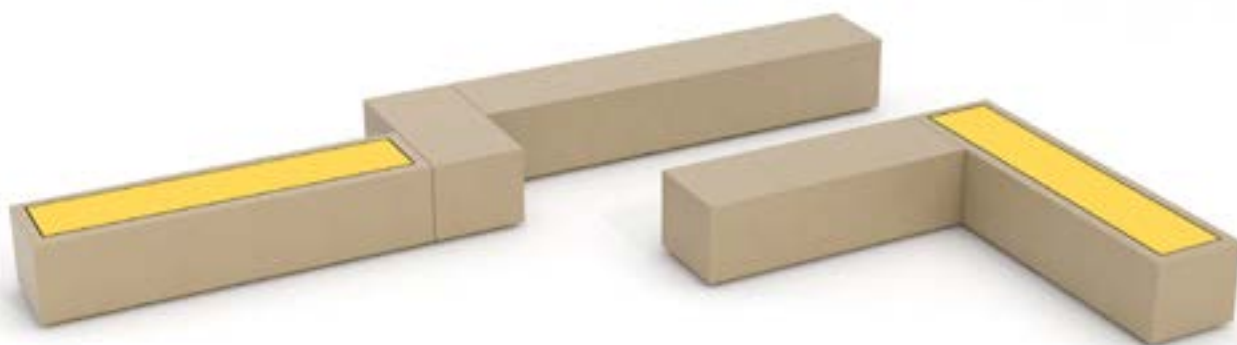
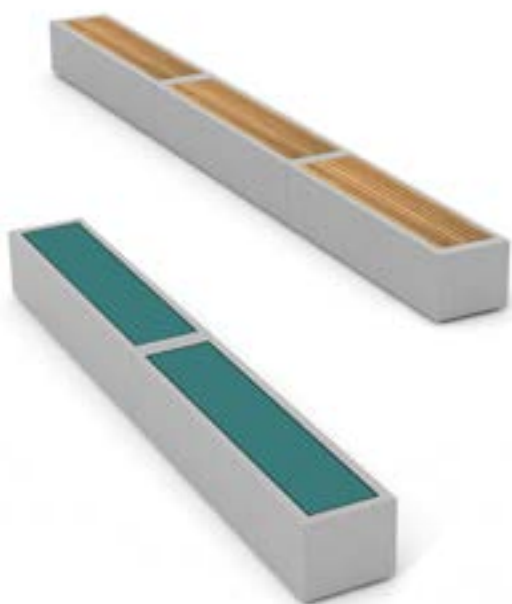
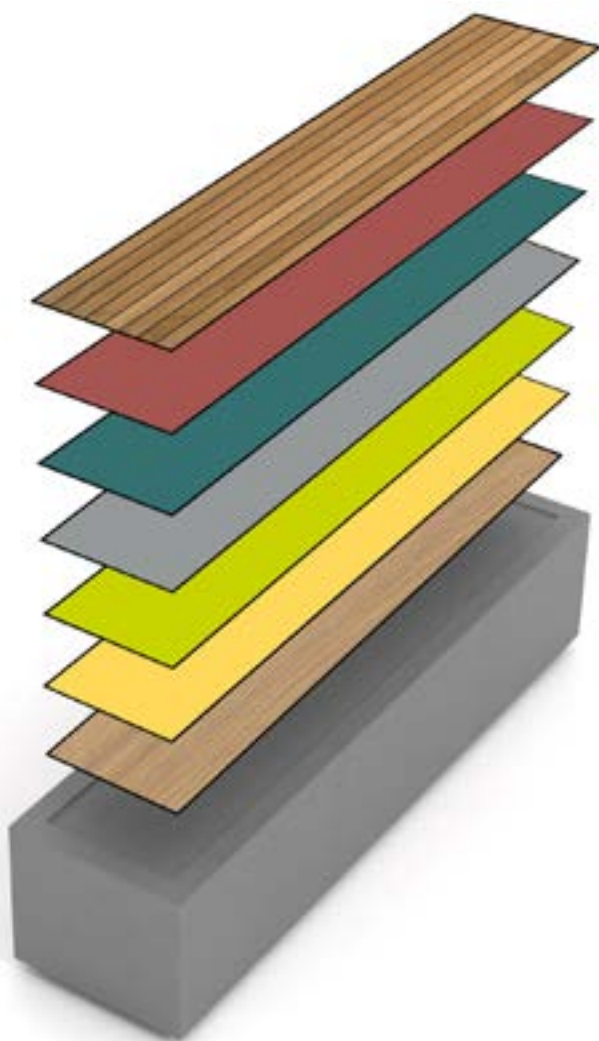
Box 200



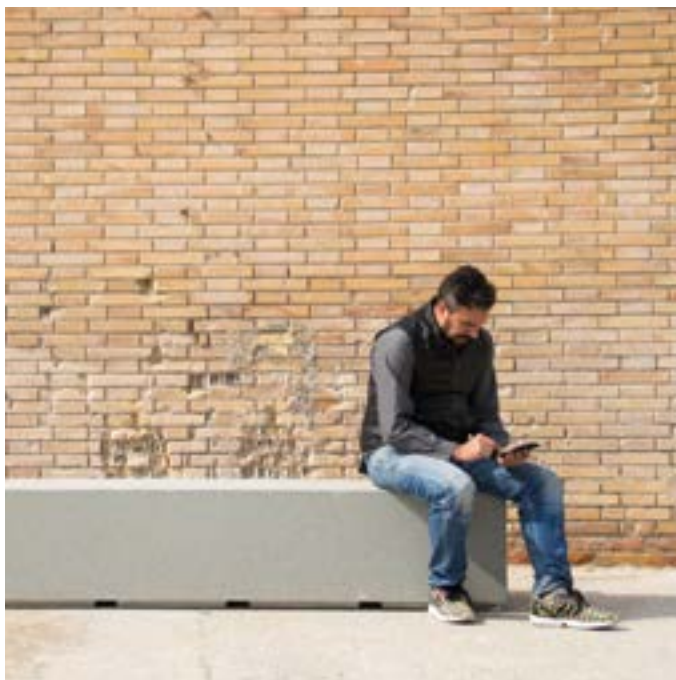
Box 250



The surface-colour options of the seats allows adapting *Box 200* to the different scenarios of our landscape, providing comfort and colour to the collection







Warranty

5 years in concrete elements.

The names, trademarks and industrial models of the products have been logged in the corresponding registers. The technical information provided by Escofet about its products can be modified without prior notice.

Escofet 1886 S.A
Head office and production

Montserrat, 162
E 08760 Martorell
Barcelona - España
T. 0034 937 737 150
F. 0034 937 737 151

info@escofet.com
www.escofet.com



GA-2005/0072 SST-0090/2010 ER-0403/2016