


Portic insists on the portico-like geometry already present in the backless benches from the Escofet Barana collection. *Portic* is a version with a wider scope of application, with two different-sized geometries; one of 160 x 40 cm and the other of 200 x 50 cm. Both with a height of 45 cm.

Concrete |  200 cm/max. |  460 kg |  4

 Update 03.03.2021



Adaptable

Portic is composed of two bench formats. Its neutral and abstract design means it can easily be installed individually in any environment, in an aligned formation or in flexible arrangements.

Ecological

Environmentally-sustainable product with an external natural stone finish using local recycled aggregates, in a formulation that replaces the use of natural aggregates. Eco-Grey® and Eco-Black®, with the CE marking.

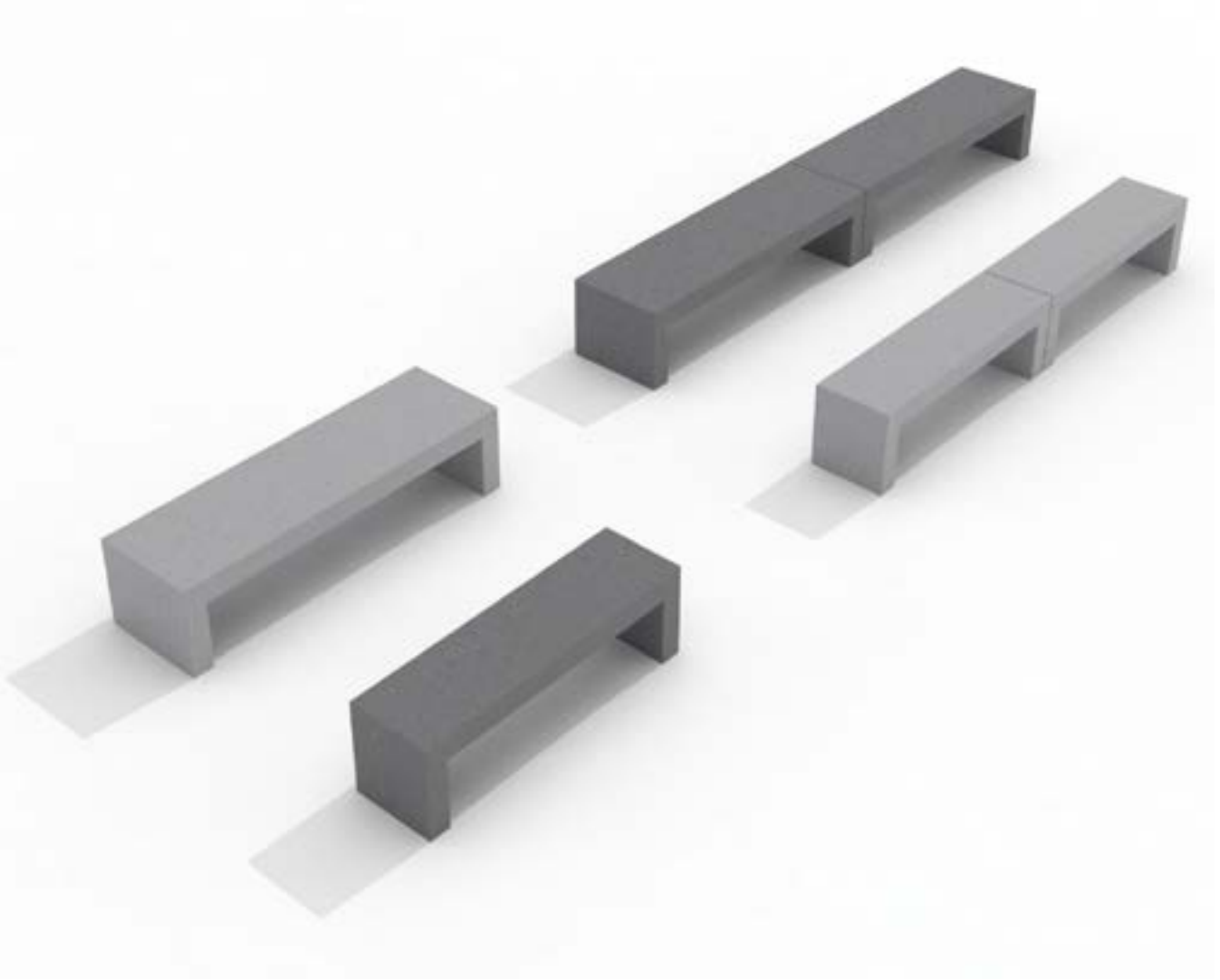
Material

Moulded concrete, etched finish with recycled aggregate option. Eco-Grey® with recycled concrete aggregates for models manufactured in grey and Eco-Black® with aggregates from iron and steel slag with a high specific weight, an improved wear parameter and high resistance to freeze-thaw cycles. Optional seat made of solid Teak wood slats, jointed with black elastomer. A second seat option with HPL sheet in colour under request.

Installation

Resting on the paving, and optionally anchored with two screws threaded through sleeves recessed in base.





1. Backless bench

Portic	Portic 160	Portic 200
--------	------------	------------

Dimensions	160 x 40 x 45 cm	200 x 50 x 45 cm
------------	------------------	------------------

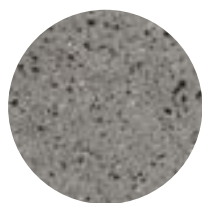
Weight	260 kg	460 kg
--------	--------	--------

1.1 General features

Material	Concrete Recycled concrete	Fixing	Free-standing Anchored with screws
----------	-------------------------------	--------	---------------------------------------

Finish	Etched and waterproofed
--------	-------------------------

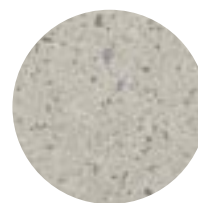
Colours



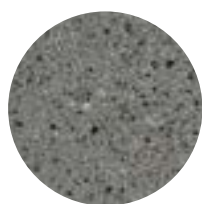
GR. Grey



NG. Black



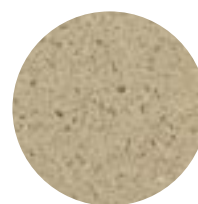
BL. White



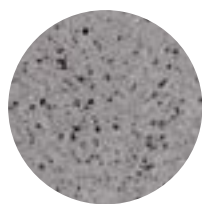
CA. Grey CA



RA. Red



BG. Beige



EGR. Eco-Grey®



ENG. Eco-Black®

1.2 Accessories Portic 200 specifications

Material	Teak Wood
----------	-----------

Colours



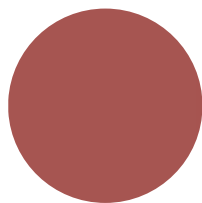
A. Teak

1.2 Accessories Portic 200 specifications

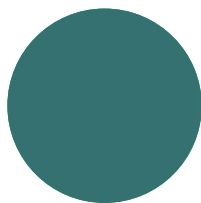
Material High Pressure Laminated HPL

Finish Embossing matt

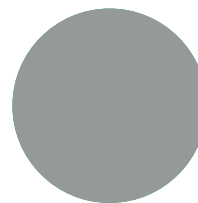
Colours



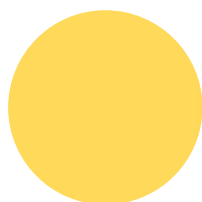
A. Terracotta



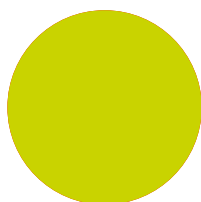
B. Petrol Green



C. Medium Grey



D. Golden Yellow



E. Yellowish Green



F. HPL - Enigma Wood

*The color may not be exactly the same as the final product.

1.2.1 HPL technical features

Description Panels are duromer high-pressure laminates in accordance with EN 438-6 Type EDF. Double-hardened acrylic PUR resins provide extremely effective weather protection.

Weather resistant EN ISO 4892-2

Lightfastness

EN ISO 4892-3

Impact resistant EN ISO 178

Temperatures resistant -80°C a 180°C

DMTA- OFI 300.128

Scratch resistant Yes

Solvent resistant

Yes

Hail resistant Yes

Easy to clean

Yes

1.3 Installation system

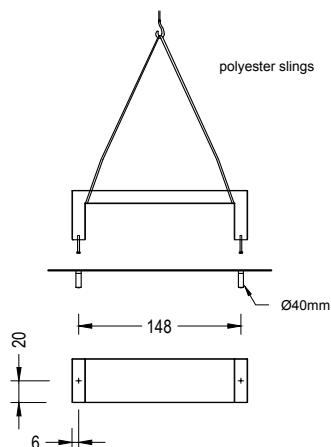
Hoisting

(W=260 kg / 384 kg)

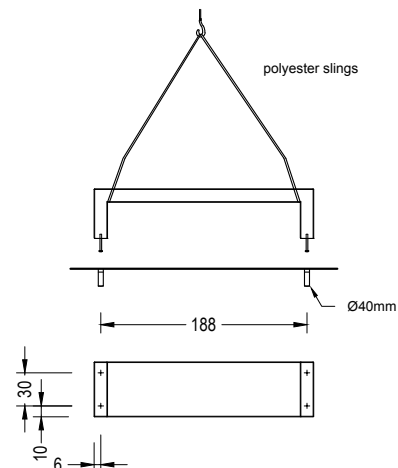
Installation

Drill pavement Ø40 x 180 mm and fill with resin or fat mortar. Tightly screw the 2 or 4 stud bolts Din 931 M16 x 140 mm. Center and caulk the bench foot all around.

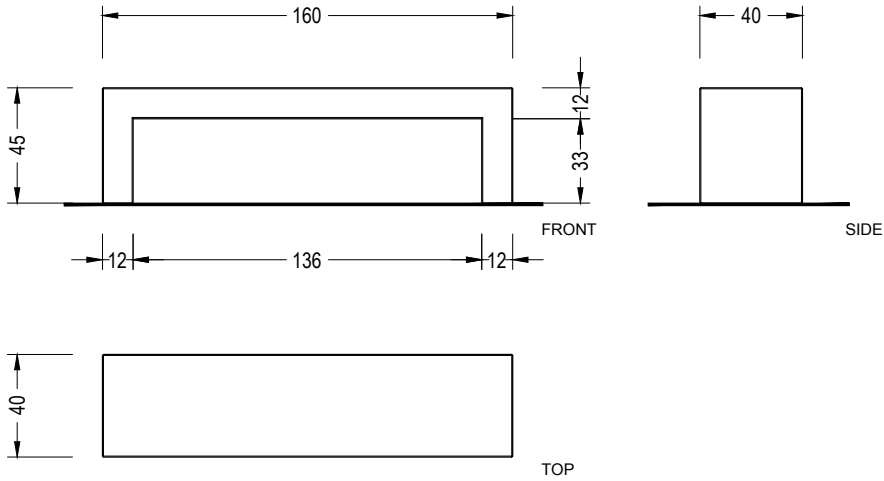
PORTIC 160



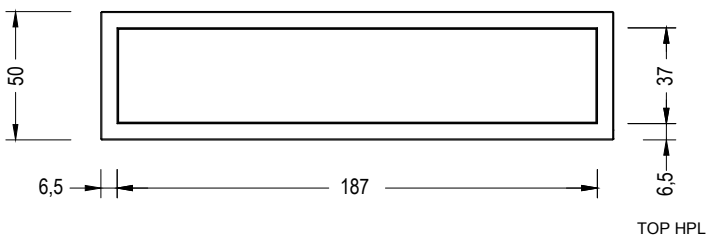
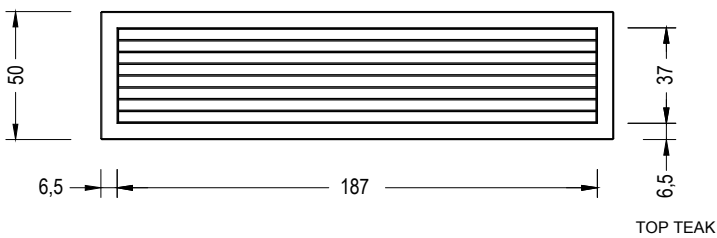
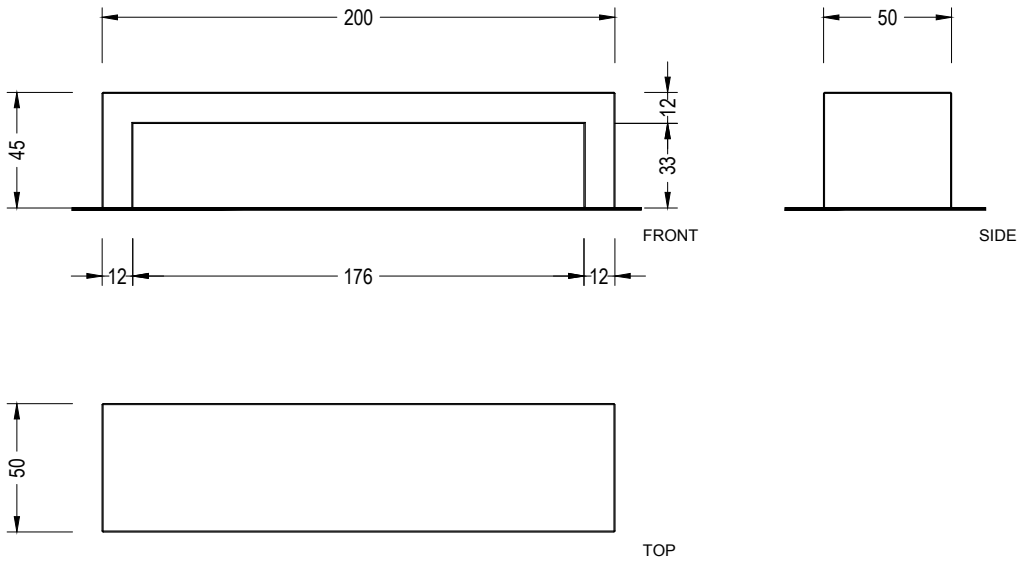
PORTIC 200



Portic 160



Portic 200



The surface-colour options of the seats allows adapting Portic 200 to the different scenarios of our landscape, providing comfort and colour to the collection.

1.5 Combinations of colours



PORTIC 200 + BOX PLANER



Warranty

5 years in concrete elements.

The names, trademarks and industrial models of the products have been logged in the corresponding registers. The technical information provided by Escofet about its products can be modified without prior notice.

Escofet 1886 S.A
Head office and production

Montserrat, 162
E 08760 Martorell
Barcelona - España
T. 0034 937 737 150
F. 0034 937 737 151

info@escofet.com
www.escofet.com

