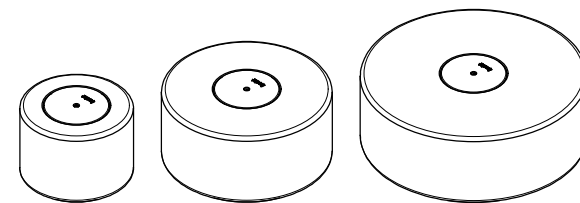


CARACTERÍSTICAS / CHARACTERISTICS

MATERIAL hormigón
COLOR carta de colores estándar
ACABADO decapado e hidrofugado
COLOC. anclado con tornillos
ILUMINACION Tira Led 12 W/m; 3000°K / 6000°K
DRIVER 24 V / 1,5A / IP67
PESO Soc 60: 224 kg / Soc 90: 550 kg / Soc 120: 1081kg

MATERIAL cast stone
COLOUR standard colour chart
FINISH etched and waterproofed
FIXING anchored with screws
LIGHTING Led Strip 12 W/m; 3000°K / 6000°K
DRIVER 24 V / 1,5A / IP67
WEIGHT Soc 60: 224 kg / Soc 90: 550 kg / Soc 120: 1081kg

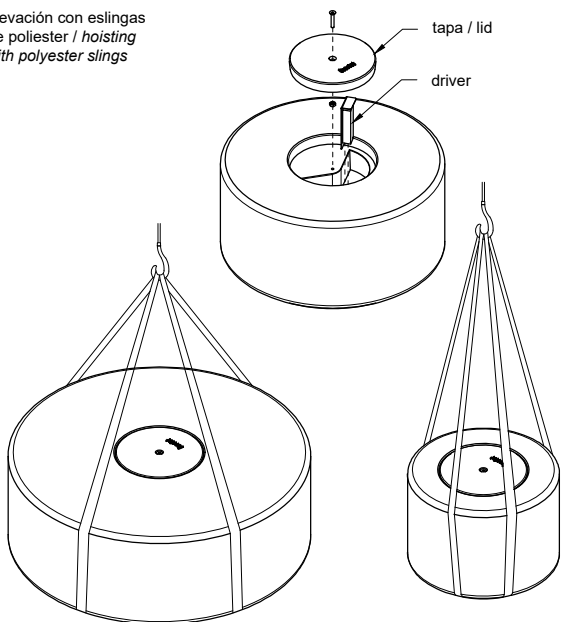


Update 17/06/2021
 Cotas / Sizes cm

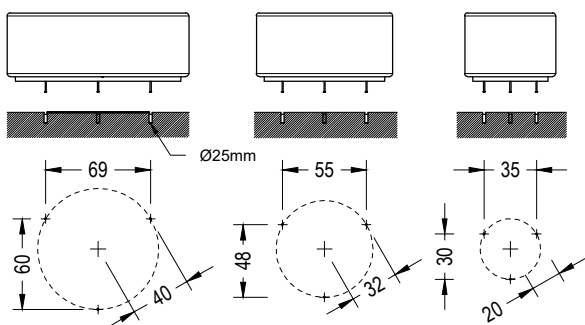
INSTALACIÓN / INSTALATION

elevación / hoisting
 P = 224 kg / 550 kg / 1081kg

elevación con eslingas de poliéster / hoisting with polyester slings



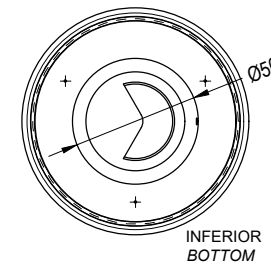
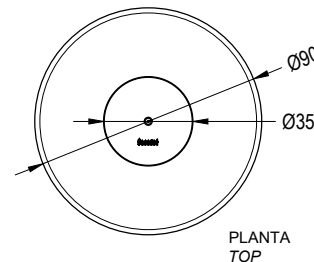
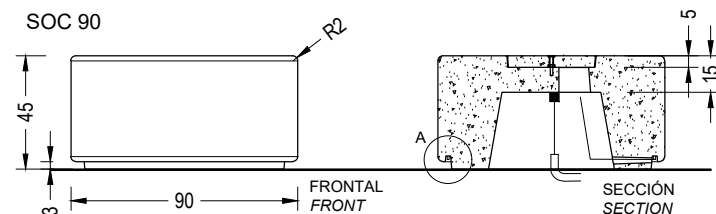
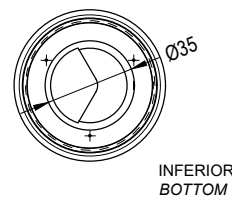
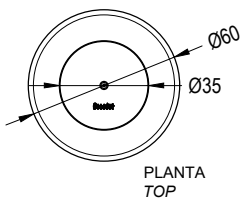
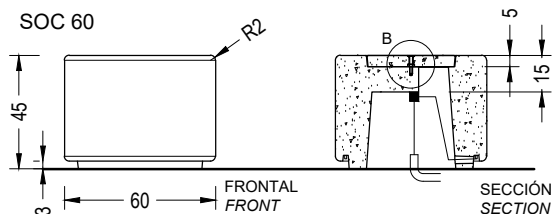
E:1/30



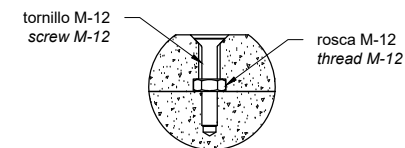
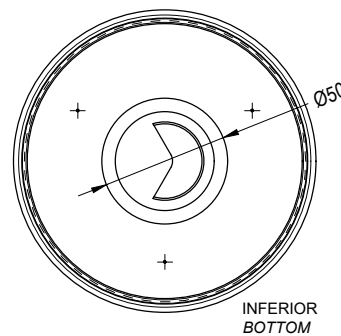
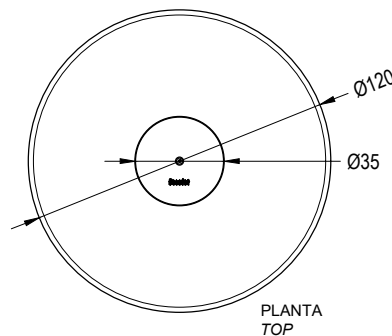
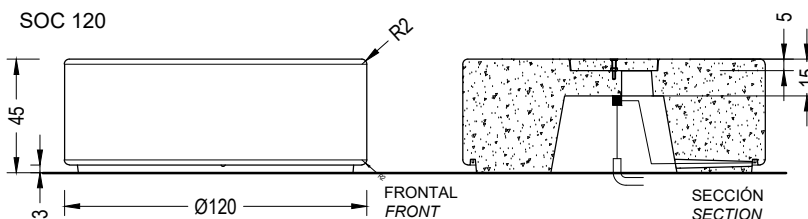
roskar 3 tornillos a fondo (Ø12 x 140 mm)
 tightly screw 3 stud bolts (Ø12 x 140 mm)

taladrar el pavimento y rellenar de resina o mortero rico
 drill the pavement fill with resin or fat mortar

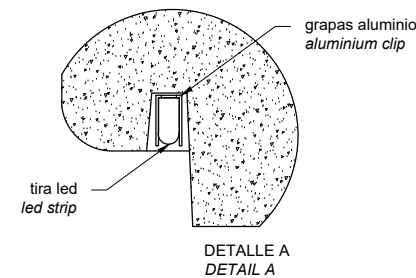
GEOMETRÍA / GEOMETRY



E:1/30



DETALLE B
 DETAIL B



DETALLE A
 DETAIL A