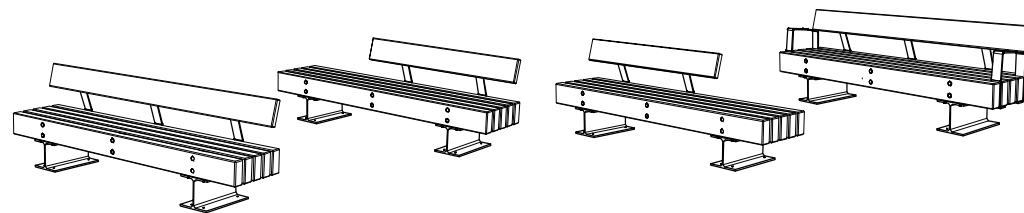


CARACTERÍSTICAS / CHARACTERISTICS

MATERIAL pino nórdico FSC®
 perfiles de acero zincado,
COLOR negro / plata, pintado
ACABADO tratamiento al autoclave
 y protección fungicida
COLOC. anclado mediante tacos
 de expansión
PESO 275 kg / 260 kg

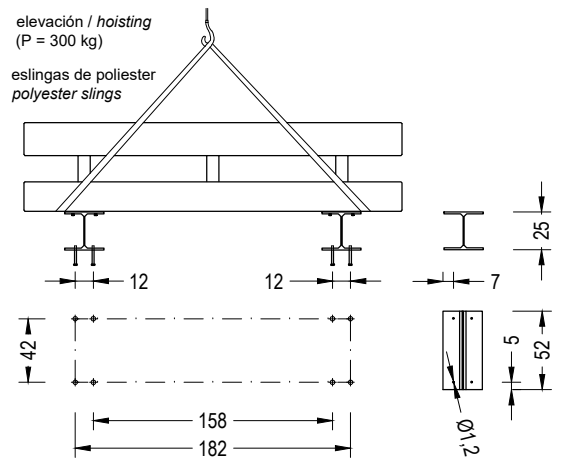
MATERIAL nordic pinewood FSC®
 zinc plated steel
COLOUR black / silver, coated finish
FINISH pressure treated and
 preventive fungicide
FIXING anchored by means
 of expansion bolts
WEIGHT 275 kg / 260 kg



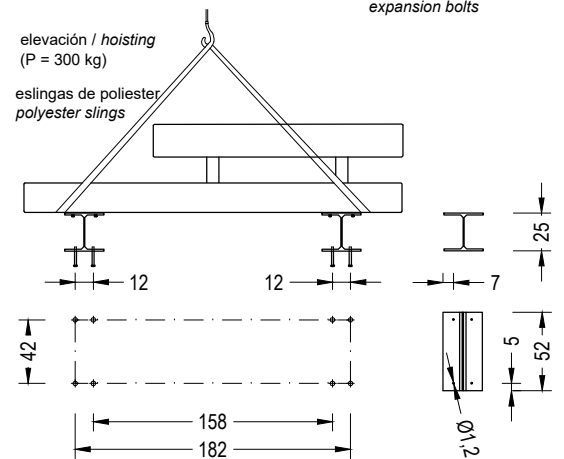
Update 26/07/2021
 Cotas / Sizes cm

INSTALACIÓN / INSTALLATION

E:1/50



Perfil HEA 260
 tacos expansión Ø12 x 100
 expansion bolts

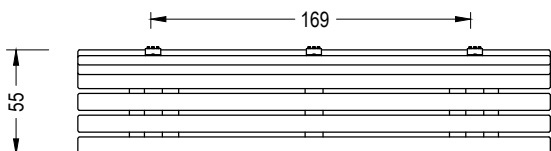
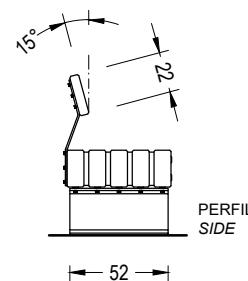
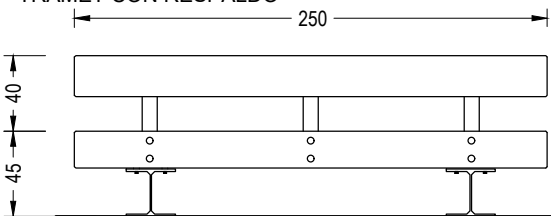


Perfil HEA 260
 tacos expansión Ø12 x 100
 expansion bolts

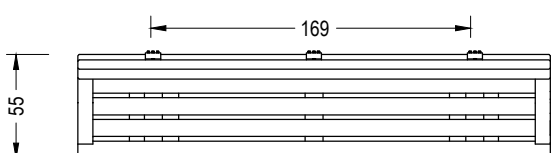
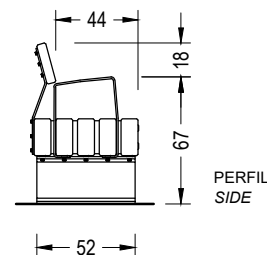
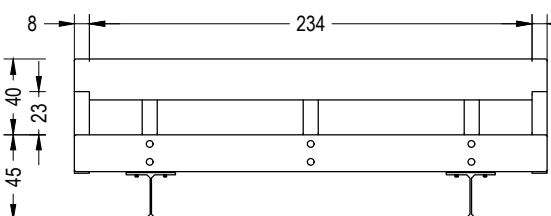
GEOMETRÍA / GEOMETRY

E:1/40

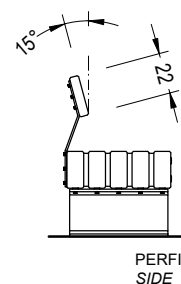
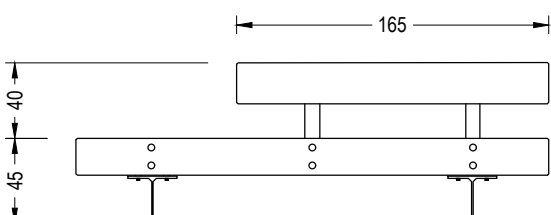
TRAMET CON RESPALDO



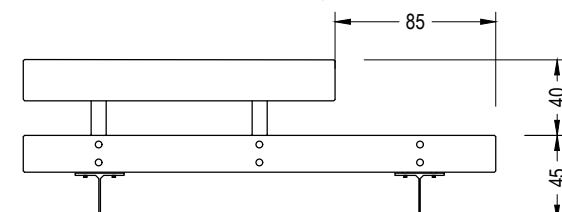
TRAMET CON RESPALDO + APOYABRAZOS



TRAMET CON RESPALDO DERECHA



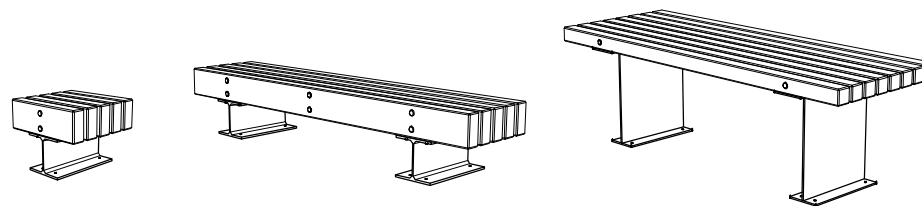
TRAMET CON RESPALDO IZQUIERDA



CARACTERÍSTICAS / CHARACTERISTICS

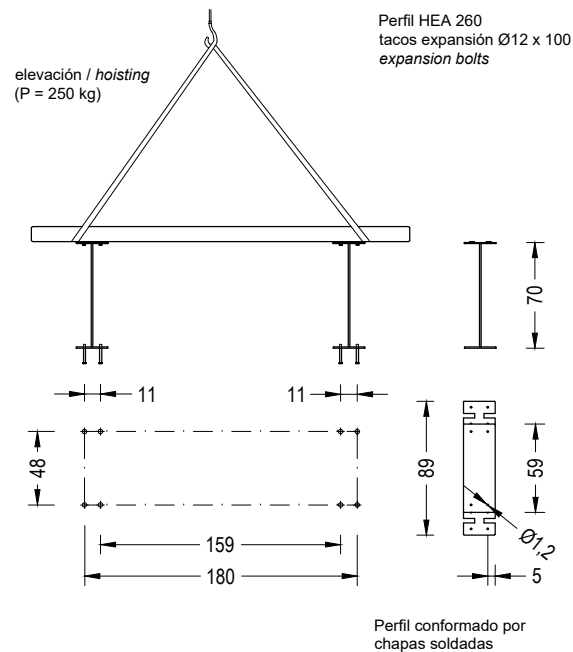
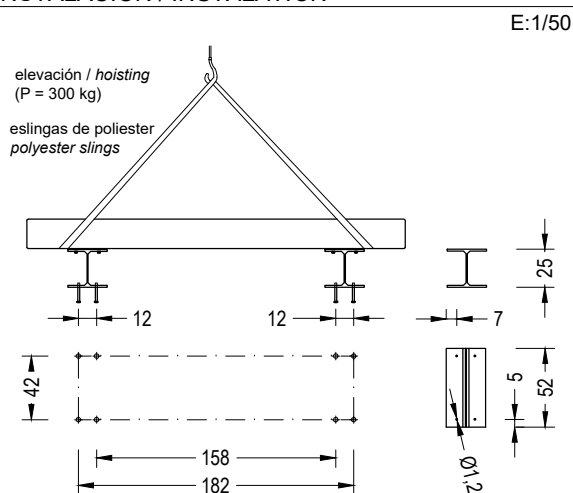
MATERIAL pino nórdico FSC®
 perfiles de acero zincado,
COLOR negro / plata, pintado
ACABADO tratamiento al autoclave
 y protección fungicida
COLOC. anclado mediante tacos
 de expansión
PESO 260 kg / 245 kg / 115 kg

MATERIAL nordic pinewood FSC®
 zinc plated steel
COLOUR black / silver, coated finish
FINISH pressure treated and
 preventive fungicide
FIXING anchored by means
 of expansion bolts
WEIGHT 260kg / 245 kg / 115 kg



Update 26/07/2021
 Cotas / Sizes cm

INSTALACIÓN / INSTALLATION



GEOMETRÍA / GEOMETRY

