





Twig Air is a backless bench system that embodies the concepts of modularity, fluidity, connection and interactivity with its users. Its organic formation, based on a single model with three arms, allows for the creation of indoor and outdoor “conversational landscapes”, or can be combined with the concrete Twigs. The Air Collection version is highlighted due to its lightness, the wide color palette and the possibility of incorporating a LED lighting kit.

Polyethylene HDPE |  237 cm |  60 kg |  6

Add-ons: LED

 Update 09.12.2021



Alexander Lotersztain 2009

Origin

It is a remake of the original model designed for the campus of the Southbank Institute of Technology in Brisbane, Australia

Modular

The corners of its three arms have the same geometry and cross-section, thus favouring the aggregation of parts in an organic, free and even arbitrary manner. This gives rise to the generation of different compositions and the combination of concrete and plastic modules.

Recycled and recyclable

It is monomaterial and 100% recyclable. The option in black color is 100% recycled, and consequently it is an environmentally sustainable product.

Non-porous

The peculiarity of non-porous HDPE material means that its surface is easy to wash with pressurised water and a degreasing detergent that contains surfactants. It is disinfected with a hydro-alcoholic solution.

Material

Made with rotomolded HDPE polyethylene, it's available in a wide variety of colors. With a threaded inspection chamber cover permitting access to the interior.

Installation

Can be installed on the paving, and anchored, if required, using two optional stainless steel trim systems: fixed and invisible, or exposed and detachable. Its rounded ends permit the installation of continuity modules, with no specific requirements in terms of precision.



TWIG AIR



Escofet®

TWIG AIR



Escofet®

TWIG AIR



Escofet®

1. Backless bench

Twig Air			
Dimensions	237 x 193 x 46 cm		
Weight	60 kg		
Lighting	5 LED profiles, 57 white colour t° 5000k Only in white		
1.1 General features			
Material	Polyethylene HDPE	Fixing	Free-standing / Anchored
Finish	Micro-textured	Performance	UV resistance and outdoors
Flame retardant	Complies with the regulations euroclasses UNE-EN 13501-1:2019, classified as "E" in relation to its reaction to fire behavior.		

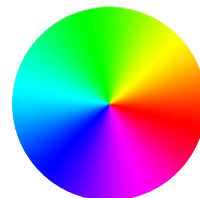
Colours



RBN. White



RNG. Black
100% recycled



Color chart
standard *

* Optional colour according to project

1.2 Installation system

Hoisting

(W=60 kg)

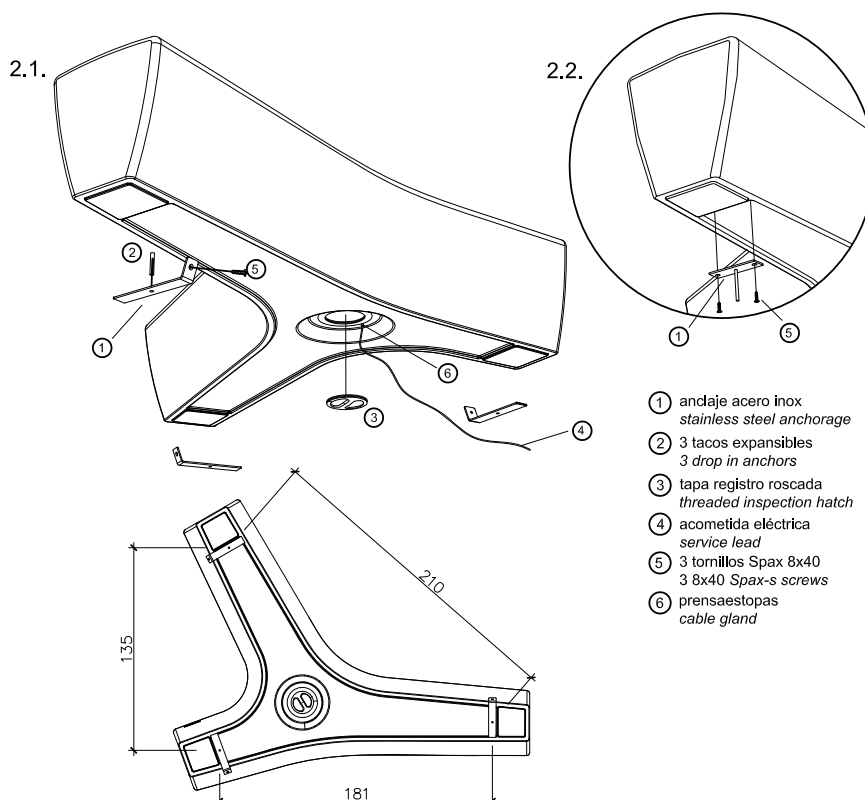
Installation

Optional sand ballast to increase the weight.

2.1. Seen and Removable.

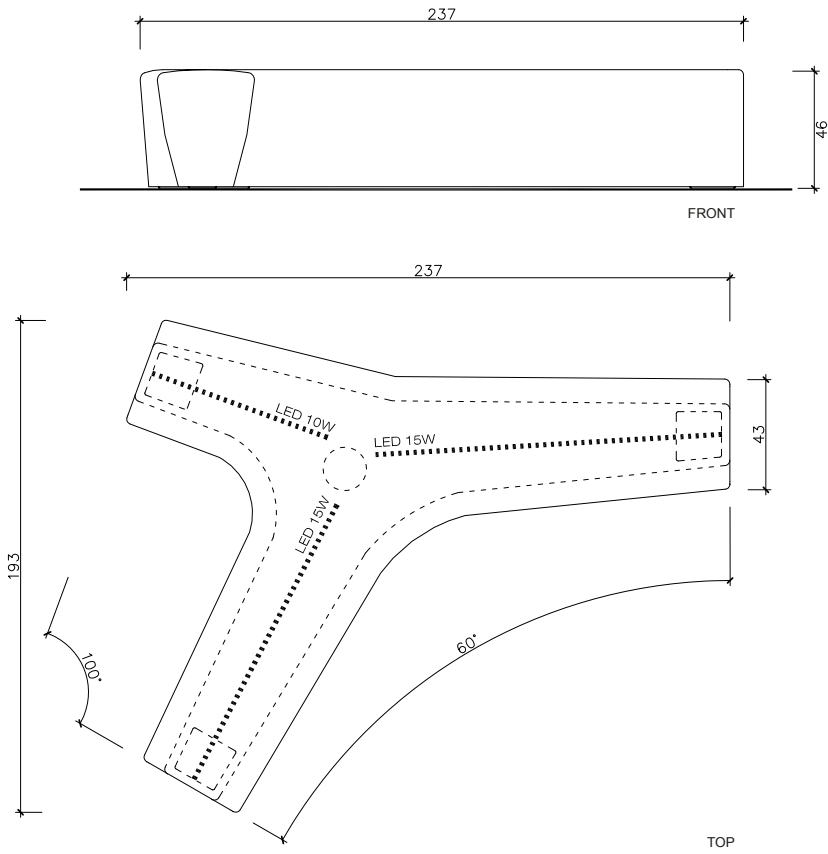
Drill the pavement and place the staples using expandable blocks. Position and fix using Spax 8x40 screws.

2.2. Hidden and Fixed Drill the pavement and fill with resin or rich mortar.

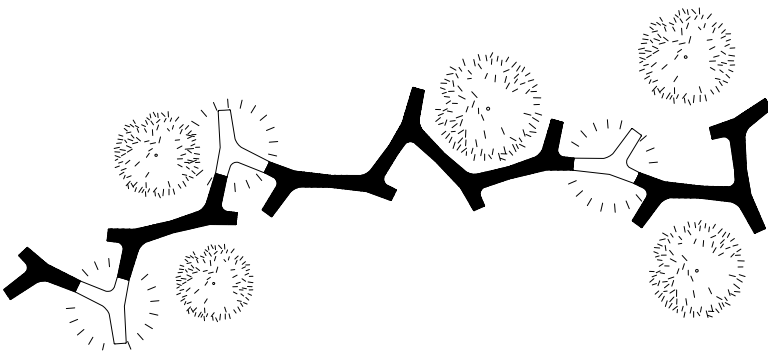


1.3 Geometry

Twig Air



Agregation





The names, trademarks and industrial models of the products have been logged in the corresponding registers. The technical information provided by Escofet about its products can be modified without prior notice.

Escofet 1886 S.A
Head office and production

Montserrat, 162
E 08760 Martorell
Barcelona - España
T. 0034 937 737 150
F. 0034 937 737 151

info@escofet.com
www.escofet.com



GA-2005/0072 SST-0090/2010 ER-0403/2016