

The *Crown* plant box can be incorporated as a separate element into an urban setting or installed in a sequential layout, with no beginning or end. It is made up of five parts that form a circumference with an outer diameter of 340 cm and an inner diameter of 240 cm. The box has a capacity for 2,000 litres and a soil depth of 45 cm and is suitable for planting shrubs.

Concrete | 5 pcs | Ø 340 cm | 507 kg/pc | 2000 L | 8

Update 27.01.2022



Origin

It was initially designed as a landscaping element of a public area in the interior of a block located in the Ensanche neighbourhood of Barcelona on a roof with a limited load-bearing capacity. The module interior was rendered more lightweight in order to reduce overload.

Versatility

Designed initially for roofs with a limited load-bearing capacity, with a lightweight interior. The slightly rounded cross-section enhances the plant surface area, accommodating combined use as a garden area and as a backless bench with a remarkable character.

Material

The *Crown* plant box is made of reinforced concrete with a etched water-repellent finish and is supplied in the standard chart colour.

Installation

It is self-stabilising and can rest on the paving or arena with no need for fastening elements. The union of the modules to each other is ensured by the zigzag-like joint between them.



CROWN



Escofet®

1. Planter

Crown

Dimensions Ø340 x 43 cm

Weight 507 kg/pc

1.1 General features

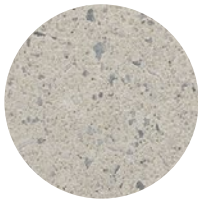
Material Reinforced concrete Fixing Free-standing

Finish Etched and waterproofed

Colours



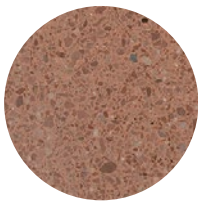
GR. Grey



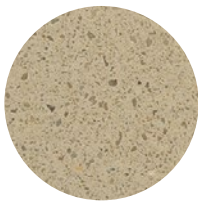
BL. White



CA. CA Grey



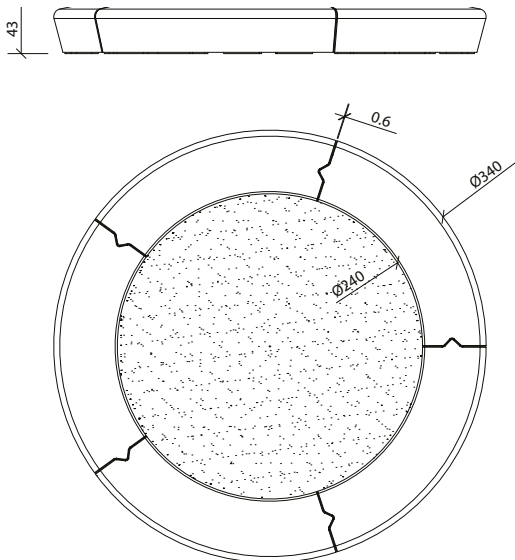
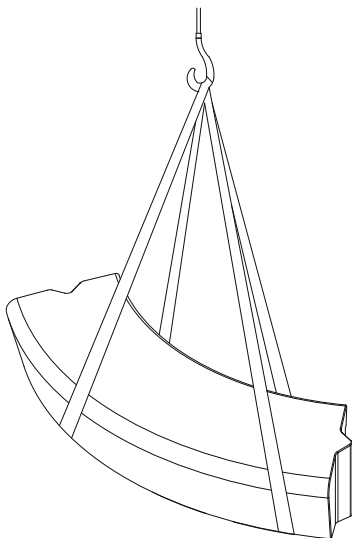
RA. Red



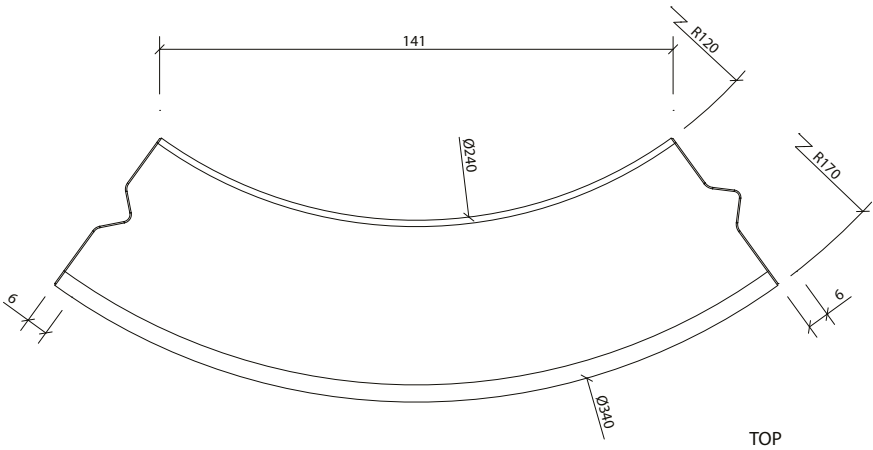
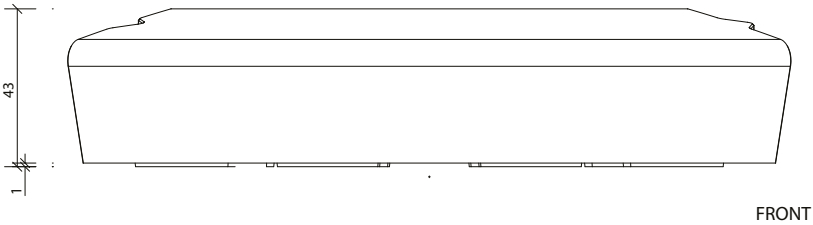
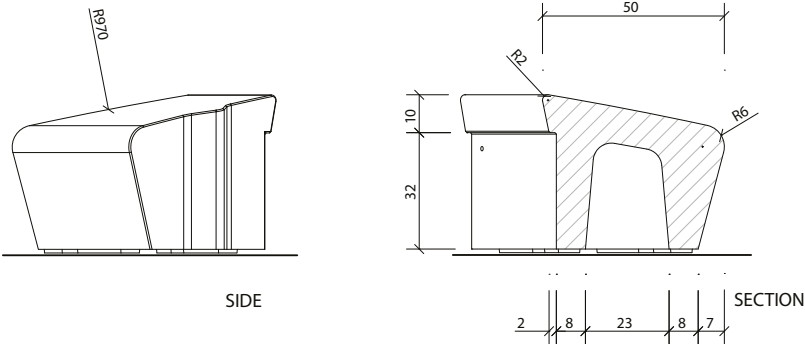
BG. Beige

1.2 Installation system

Hoisting
(W=300Kg)



Crown





Warranty

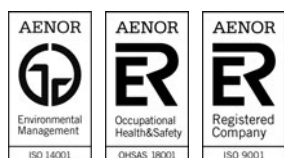
5 years on all the components.

The names, trade marks and industrial models of the products have been deposited in the corresponding registries. The technical information provided by Escofet about its products may be modified without prior notice.

Escofet 1886 S.A
Central office and production

Montserrat, 162
E 08760 Martorell
Barcelona - España
T. 0034 937 737 150
F. 0034 937 737 151

info@escofet.com
www.escofet.com



GA-2005/0072 SST-0090/2010 ER-0403/2016