


Lungo Mare was designed as a hybridisation of an object and natural space, making real the dream of converting the waves and dunes on the beach into a meeting place with an undulated cross section and a rectangular shape measuring 4 x 2 metres. Its terse, printed skin snugly fits the user while its shape retains the imprint of an absent body.

Concrete |  400 cm/max |  3000 kg |  8

 Update 14.02.2022



Origin

Lungo Mare was designed in 1997 during a series of conversations between Enric Miralles, Benedetta Tagliabue and Emili Farré-Escofet. It was exhibited for the first time at the Mies van der Rohe hall, on occasion of the Scottish Parliament presentation, also designed by EMBT. It was first installed permanently in the Diagonal Mar Park in 2001.

Landscaping

The collection is made up of one module, A, measuring 2 x 4 m and two smaller modules, B and C measuring 2 x 2 m, obtained as the result of dividing module A into two halves. Conceived as a single model, it is revealed as a landscape element designed for a possible solitary use, but offering its combinatorial capacity in its compositional background.

Material

A moulded concrete piece with a gentle surface finish, reinforced with stainless steel. Printed with random shapes generated by sand deposits.

Installation

It is heavy and fitted with six monolithic supports for horizontal positioning and can be subtly installed on the ground with no need for anchors. It has three drainage points on the under part of the undulation.

LUNGO MARE



Escofet®

LUNGO MARE



Escofet[®]



"We wanted something for LUNGO MARE that would be welcoming, like a beach, and comfortable, like dunes or waves in the sea. We wanted almost a pier on the beach, made of cast stone. It resembled a flying carpet. We thought it would be able to fly to other places and land in more urban areas, in parks, on lawns, on a campus... We spent more than two years completing the configuration of this element, working on prototypes in the workshop in a stimulating dialogue with the industry. Using this complicity, we generated a meeting point... which at the end of the adventure, also reflected an absence and a place for memory".
EMBT





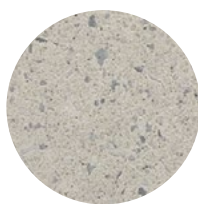
1. Landscape Furniture

Lungo Mare	Module A	Module B	Module C
Dimensions	400 x 200 x 90 cm	200 x 200 x 65 cm	200 x 200 x 90 cm
Weight	3000 kg	1500 kg	1500 kg
1.1 General features			
Material	Reinforced concrete	Fixing	Free-standing (A) Anchored with screws (B y C)
Finish	Soft etched and waterproofed		

Colours



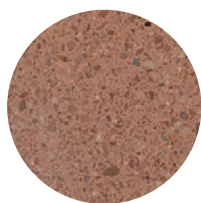
GR. Grey



BL. White



CA. Grey CA



RA. Red



BG. Beige

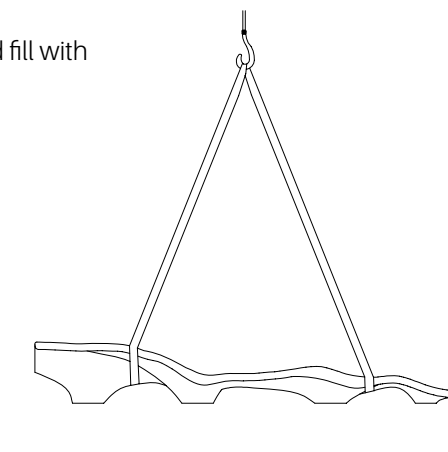
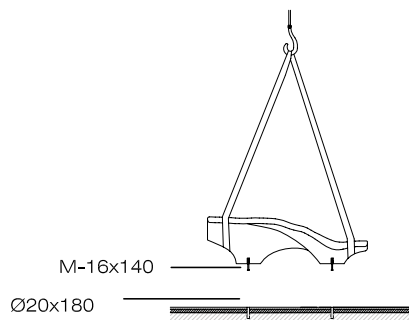
1.2 Installation system

Hoisting

(P=3000 / 1500 kg)

Installation *Module B y C*

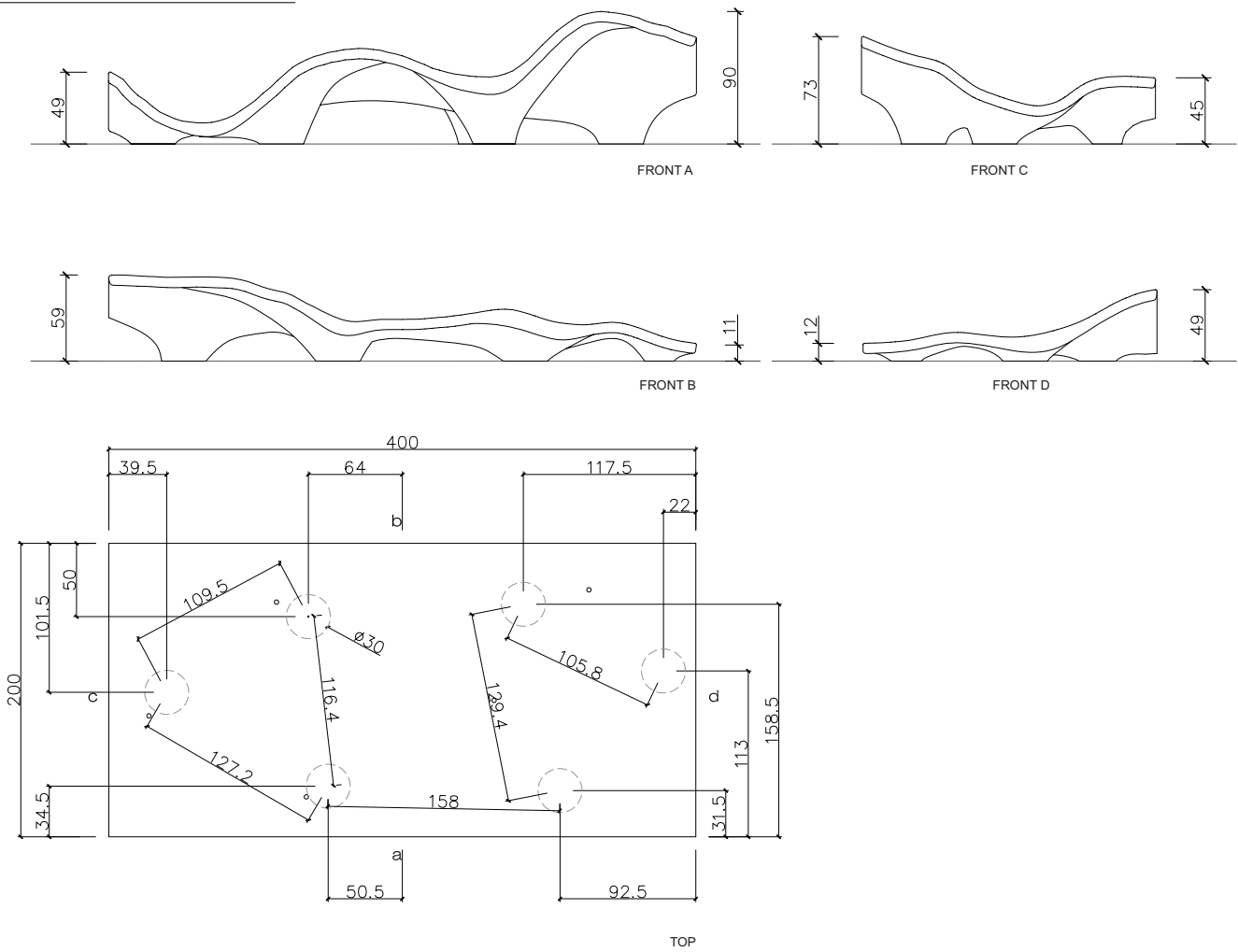
Tightly screw the 3 stud bolts M-16x140, drill pavement (Ø 20 x 180 mm) and fill with resin or fat mortar. Center and caulk the bench foot all around.



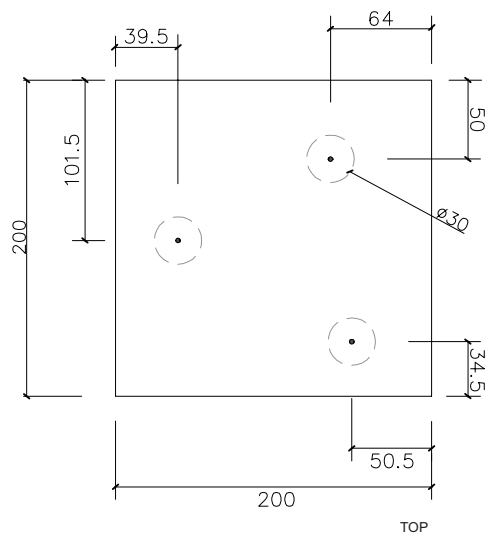
*Warning:

The foundation must be flat, smooth, rigid and confined, capable of supporting the weight, without differential deformations between its points of support. Likewise, after the installation of the bench, all the support elements must remain in full contact with the support surface, by means of levelling elements or even a mortar that absorbs possible irregularities.

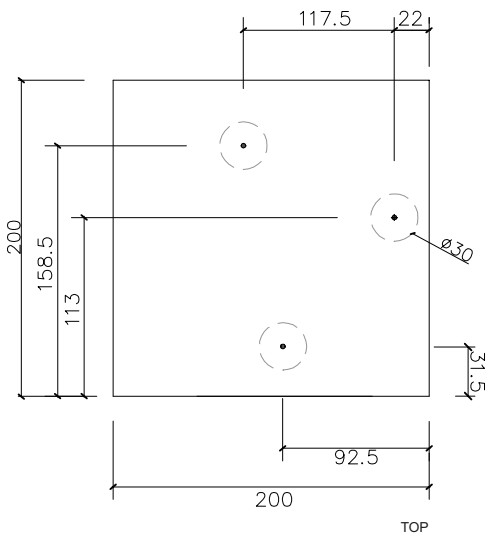
Module A



Module B



Module C





Warranty

5 years in all its components.

The names, trademarks and industrial models of the products have been logged in the corresponding registers. The technical information provided by Escofet about its products can be modified without prior notice.

Escofet 1886 S.A
Head office and production

Montserrat, 162
E 08760 Martorell
Barcelona - España
T. 0034 937 737 150
F. 0034 937 737 151

info@escofet.com
www.escofet.com



GA-2005/0072 SST-0090/2010 ER-0403/2016