




Extasi Air is a revised version of an urban element that was originally designed in pink moulded concrete, using a new material. With a triangular volume, rounded edges and weight, this Air collection backless bench has been designed for use indoors or in private outdoor areas, alternatively recreating the atmosphere of indoor comfort.

Polyethylene HDPE |  165 cm |  40 kg |  6

Add-ons: **LED**

 Update 30.03.2022



EXTASI AIR

Arriola&Fiol, arquitectes 2013

Escofet®

Origin

Extasi apperars to fill the need for a lightweight wide and light backless bench that can be combined with the rest of Air Collection, as well as its concrete version.

Material

Made with rotomolded HDPE polyethylene, it's available in a wide variety of colors. With a threaded inspection chamber cover permitting access to the interior.

Recycled and recyclable

It is monomaterial and 100% recyclable. The option in black color is 100% recycled, and consequently it is an environmentally sustainable product.

Non-porous

The peculiarity of non-porous HDPE material means that its surface is easy to wash with pressurised water and a degreasing detergent that contains surfactants. It is disinfected with a hydro-alcoholic solution.

Installation

Can be installed on the paving, and anchored, if required, using a hidden and removable system.



EXTASI AIR



Escofet®

EXTASI AIR



Escofet[®]

EXTASI AIR



Escofet[®]

1. Backless bench

Extasi Air

Dimensions 165 x 152 x 45 cm

Weight 40 kg

Lighting 5 LED profiles, 57 white colour t° 5000k
Only in white

1.1 General features

Material	Polyethylene HDPE	Fixing	Free-standing / Anchored
Finish	Micro-textured	Performance	UV resistance and outdoors
Flame retardant	Complies with the regulations euroclasses UNE-EN 13501-1:2019, classified as "E" in relation to its reaction to fire behavior.		

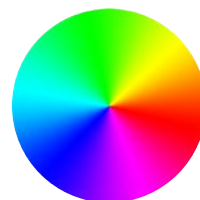
Colours



RBN. White



RNG. Black
100% recycled



Color chart
standard *

* Optional colour according to project

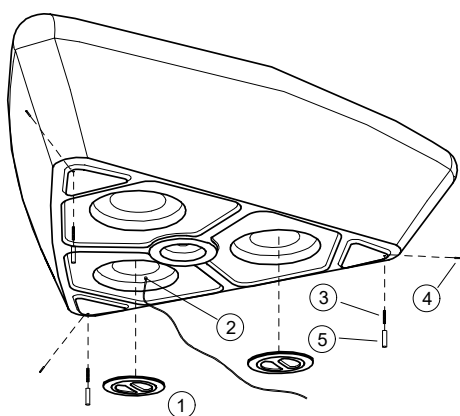
1.2 Installation system

Hoisting

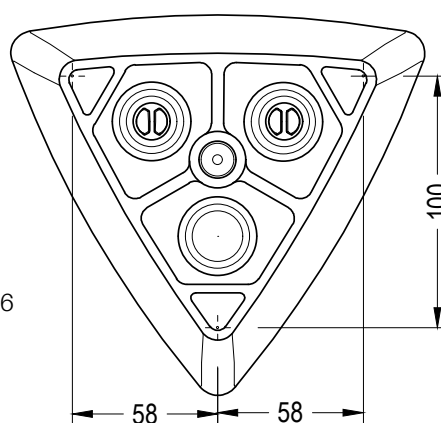
(W=40 kg)

Installation

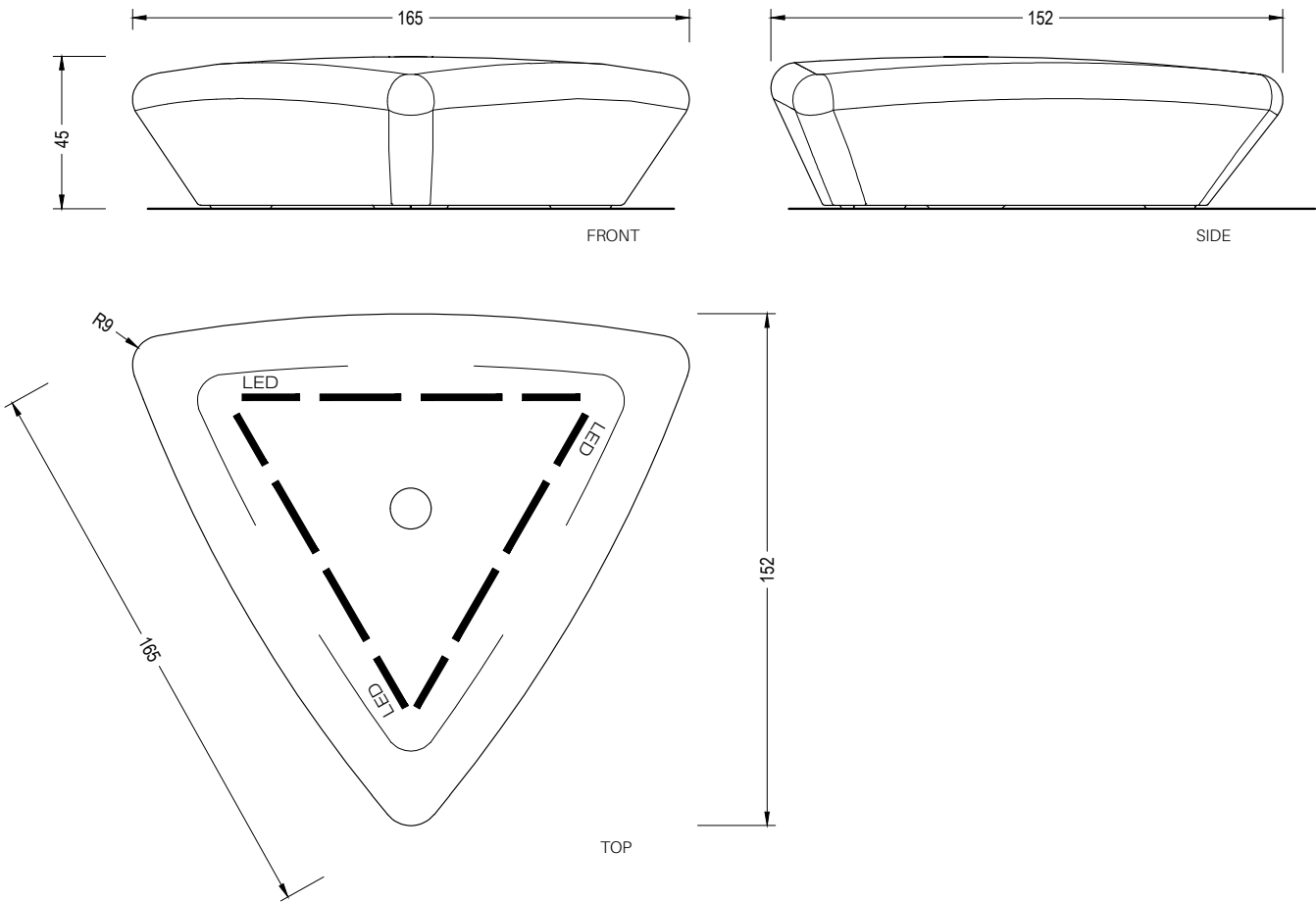
1. Indoor: free-standing
2. Outdoor: Hidden and Removable anchored: Screw the M6 screws into the bushing supplied. Place the bushing+screw kit in the existing holes in the bench. Screw in 3 M5 side fasteners until the M6 screw is tight. Rotate the bench, mark the position. Drill holes in pavement (Ø20), fill with resin or fat mortar and place the bench. Optionally, to gain weight, the customer can ballast it with sand.



- ① threaded inspection hatch
- ② service lead
- ③ screw M6
- ④ side fastener M5
- ⑤ threaded bushing pavement M6



Extasi Air



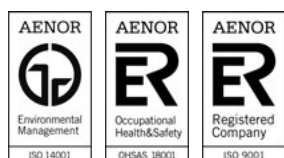


The names, trademarks and industrial models of the products have been logged in the corresponding registers. The technical information provided by Escofet about its products can be modified without prior notice.

Escofet 1886 S.A
Head office and production

Montserrat, 162
E 08760 Martorell
Barcelona - España
T. 0034 937 737 150
F. 0034 937 737 151

info@escofet.com
www.escofet.com



GA-2005/0072 SST-0090/2010 ER-0403/2016