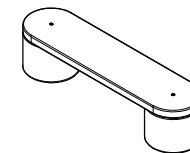


CARACTERÍSTICAS / CHARACTERISTICS

MATERIAL hormigón
COLOR carta de colores estándar
ACABADO pulido e hidrofugado /
 decapado e hidrofugado
COLOC. anclado con tornillos
PESO 532kg
 losa 182kg / soporte 175kg

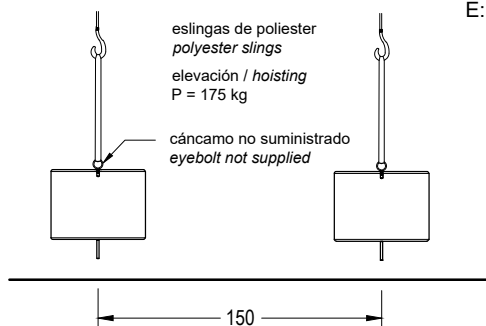
MATERIAL concrete
COLOUR standard colour chart
FINISH polished and waterproofed /
 etched and waterproofed
FIXING anchored with screws
WEIGHT 532kg
 slab 182kg / base 175kg



Update 12/09/2022
 Cotas / Sizes cm

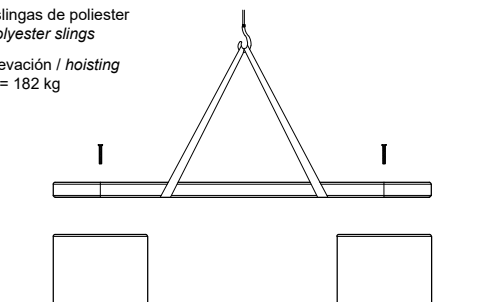
INSTALACIÓN / INSTALLATION

E:1/40



roskar tornillos M16, taladrar pavimento, rellenar con resina o mortero rico y colocar soporte
 tightly screw M16 stud bolts, drill the holes, fill with resin or fat mortar and place the support

eslingas de poliéster
 polyester slings
 elevación / hoisting
 P = 182 kg



elevant losa con eslingas, colocar y rosar tornillos M12 al soporte.
 lift the seat with slings, place it and screw bolts M12 in the support.

La base de apoyo debe ser plana, lisa, rígida y confinada, capaz de sustentar el peso. Los soportes deben permanecer en total contacto con la superficie de apoyo, mediante elementos de nivelación o mortero.
 The foundation must be flat, smooth, rigid and confined, capable of supporting the weight. The supports must remain in full contact with the support surface, by means of levelling elements or mortar.

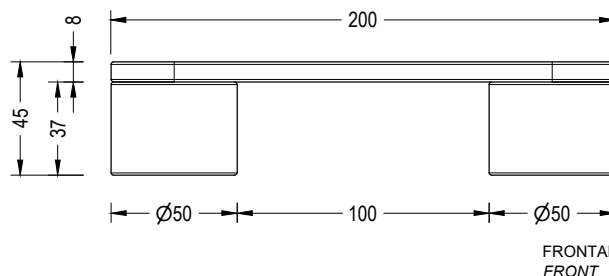


(*) Acabado pulido se aplica sólo en la superficie superior (línea discontinua).
 The polished finish is only applied on the top surface (see dashed line).

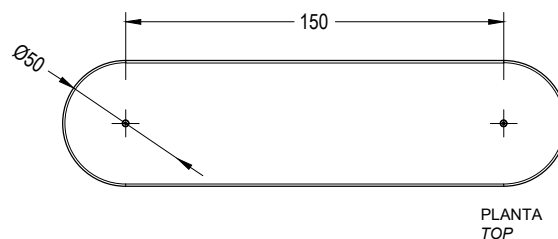
GEOMETRÍA / GEOMETRY

E:1/30

GEN banca / backless bench

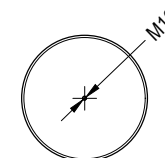


LATERAL SIDE



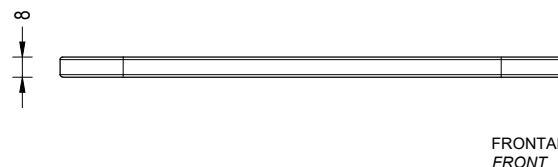
PLANTA TOP

SOPORTE / BASE

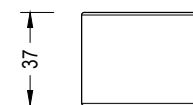


INFERIOR BOTTOM

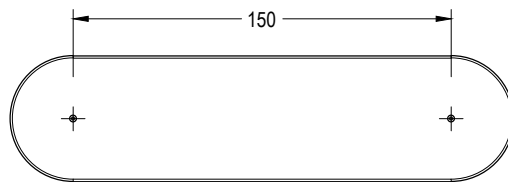
LOSA / SLAB



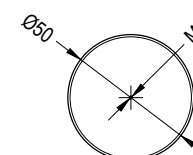
FRONTAL FRONT



LATERAL SIDE



PLANTA TOP

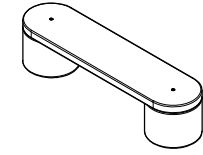


PLANTA TOP

CARACTERÍSTICAS / CHARACTERISTICS

MATERIAL hormigón
COLOR carta de colores estándar
ACABADO pulido e hidrofugado /
 decapado e hidrofugado
COLOC. anclado con tornillos
PESO 532kg
 losa 182kg / SOPORTE
 175kg

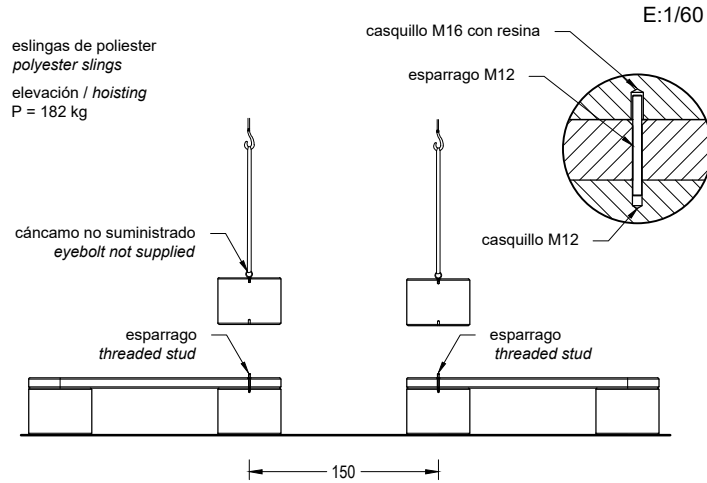
MATERIAL concrete
COLOUR standard colour chart
FINISH polished and waterproofed /
 etched and waterproofed
FIXING anchored with screws
WEIGHT 532kg
 slab 182kg / base 175kg



Update 14/09/2022
 Cotas / Sizes cm

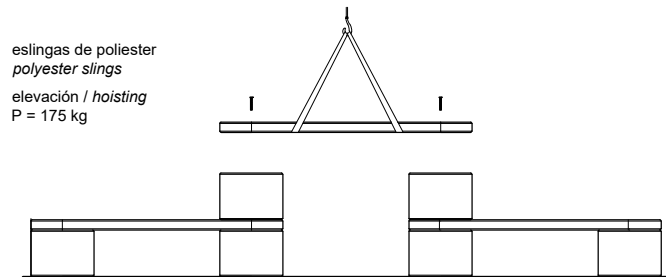
INSTALACIÓN / INSTALLATION

GEOMETRÍA / GEOMETRY



donde vaya la mesa, roscar esparrago M12 al soporte inferior a través de losa de la banca
where the table goes, screw M12 threaded stud to bottom support through bench slab

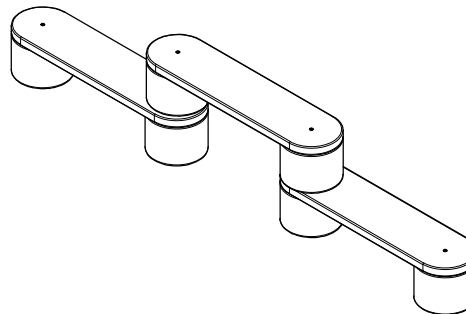
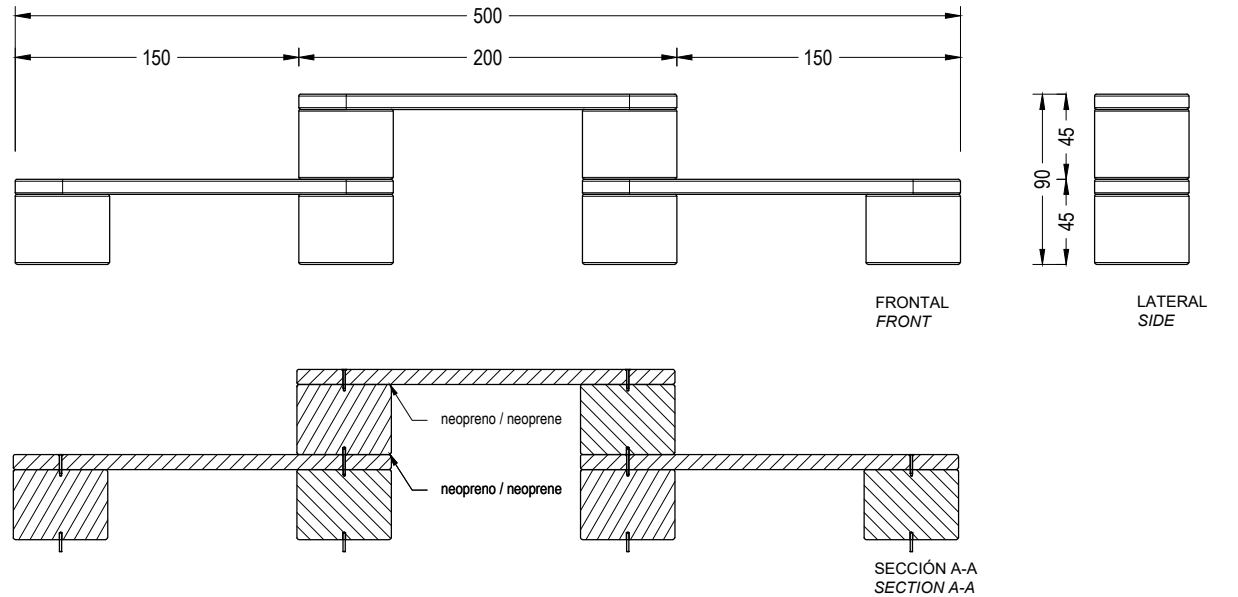
rellenar con resina o mortero rico el casquillo inferior M16 del soporte mesa y colocarlo
fill with resin or fat mortar the M16 bottom bushing of the table support and place it



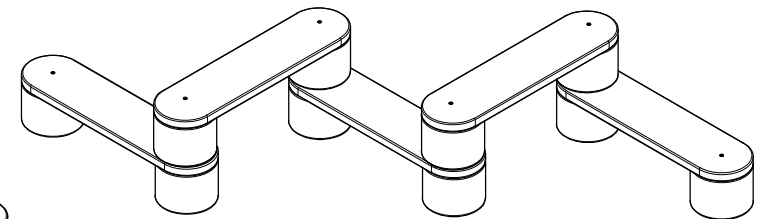
elevant la losa mesa con eslingas, colocar y roscar tornillos M12 al soporte.
lift the table slab with slings, place it and screw bolts M12 in the support.

La base de apoyo debe ser plana, lisa, rígida y confinada, capaz de sustentar el peso.
 Los soportes deben permanecer en total contacto con la superficie de apoyo, mediante
 elementos de nivelación o mortero.
*The foundation must be flat, smooth, rigid and confined, capable of supporting the weight.
 The supports must remain in full contact with the support surface, by means of levelling
 elements or mortar.*

GEN conjunto / combination



3 u. LOSA
 6 u. SOPORTE



5 u. LOSA
 10 u. SOPORTE

Otras agregaciones disponibles, consultar con OT
Other aggregations on request, please consult with OT