

Bollard is a collection of concrete spheres that organise and delimit public space. They come in four different diameters of 40, 55, 70 and 90 cm and in the form of a half sphere with a diameter of 70 and 90 cm. The collection includes the *Bollard Buzo 700* model, which has a built-in projector with two orientation options. One to light up the paving and another to light up a façade or the leaves of a tree.

Concrete | Ø 700 cm | ⚖ 440 kg

🔄 Update 30.05.2022



Origin

In *Bollard Buzo 700*, the combination of the rounded geometry of the solid concrete sphere and the tiny illuminated glass opening gives it an appearance similar to that of a diving helmet emerging from the urban landscape.

Material

Reinforced concrete with an etched finish and in the standard *Escofet* chart colours.

Installation

Bollards 400 and *550* are anchored to the paving with one M16 x 140 mm screw. *Bollards 700* and *900* are anchored with one M20 x 200 mm screw and fixed with resin in a hole with a diameter of 40 mm.

BOLLARD



Escofet[®]

BOLLARD



Iscofet®

1. Boundary

Bollard	400	550	700	700	900	900 Media esfera
Dimensions	Ø400	Ø550	Ø700	Ø700	Ø900	Ø900

Weight	85 kg	115 kg	440 kg	220 kg	910 kg	455 kg
--------	-------	--------	--------	--------	--------	--------

Bollard Buzzo	Luz H	Luz V
---------------	-------	-------

Dimensions	Ø700	Ø700
------------	------	------

Weight	440 kg	440 kg
--------	--------	--------

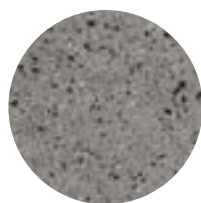
Lighting	DOPO LED 6,5W 349A-L0107B-30
----------	---------------------------------

1.1 Características generales

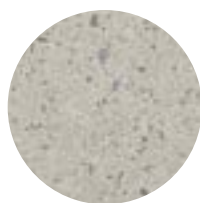
Material	Concrete	Fixing	Anchored with screws
----------	----------	--------	----------------------

Finish	Etched and waterproofed
--------	-------------------------

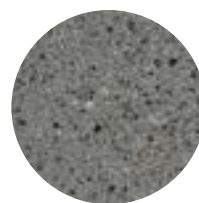
Colours



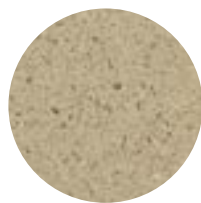
GR. Grey



BL. White



CA. CA Grey



BG. Beige

1.2 Installation system

Hoisting
(W= 85 / 115 / 440 / 910 / 455 kg)

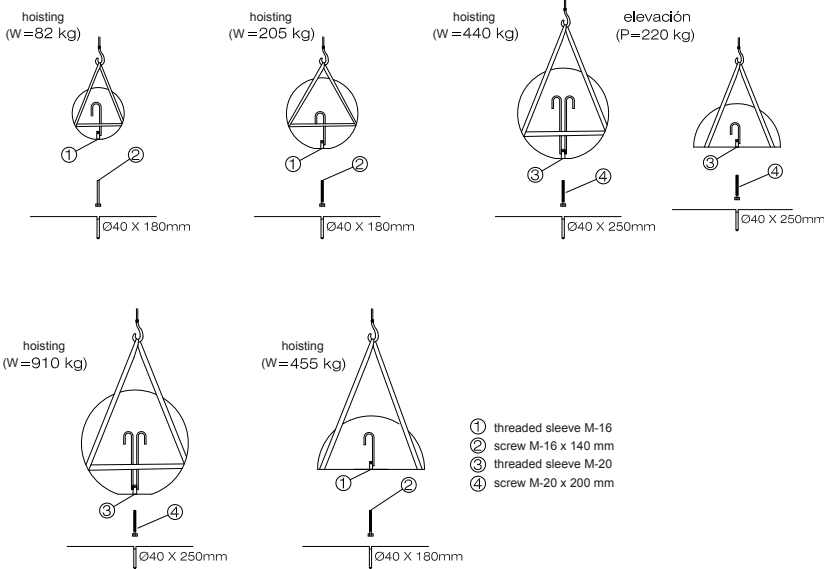
Installation
Bollard 400, 550 y Media esfera
Tightly screw the stud bolt M16x140 mm. Drill pavement (Ø40x180 mm) and fill with resin or fat mortar. Center and caulk the bench foot all around.

Bollard 700, 900 and 700 Media esfera
Tightly screw the stud bolt M20 x 200 mm. Drill pavement (Ø40x200 mm) and fill with resin or fat mortar. Center and caulk the bench foot all around.

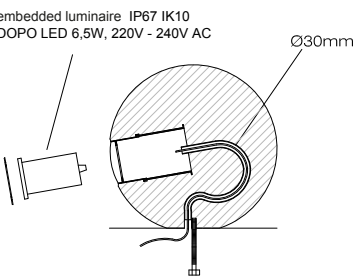
Bollard Buzo
Before finally place the item, bring the electrical connection to the connection terminal. Tightly screw the stud bolt M20 x 200 mm. Drill pavement (Ø40x200 mm) and fill with resin or fat mortar. Center and caulk the bench foot all around. Once located, connect and mount the luminaire into its receptacle.

1.2 Installation system

Bollard 400, 550, 700, 900, 900 and 700 Media esfera

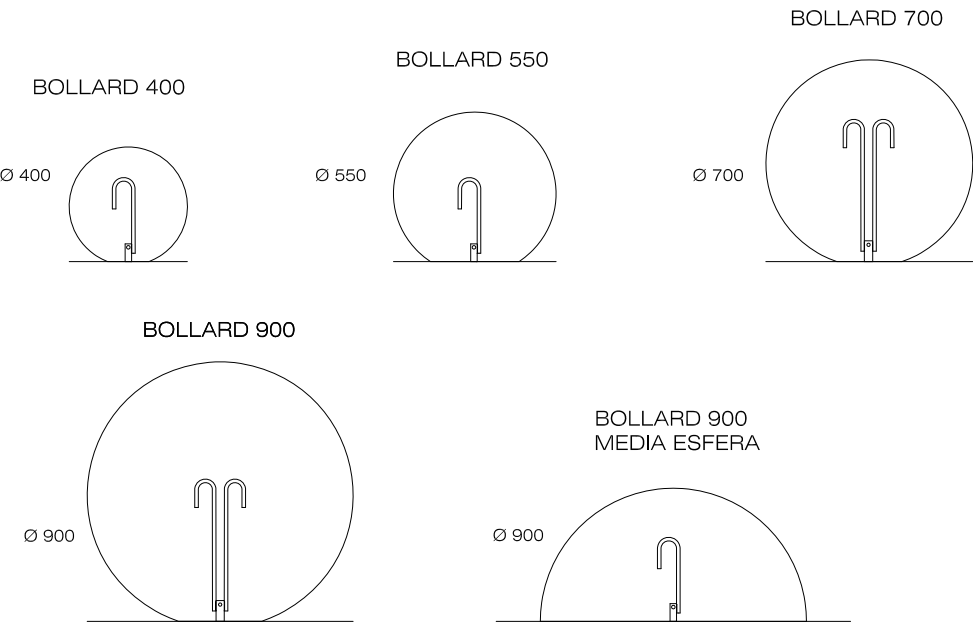


Bollard Buzo 700

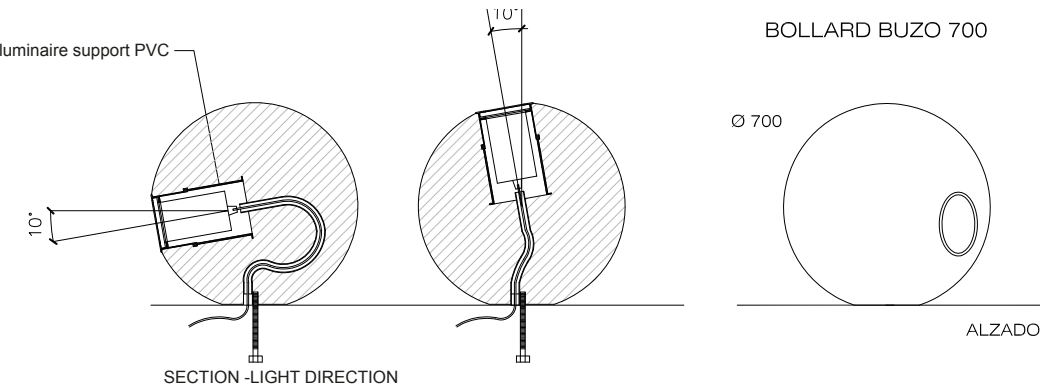


1.3 Geometry

Bollard 400, 550, 700, 900, 900 and 700 Media esfera



Bollard Buzo 700





Warranty

5 years in concrete elements.

The names, trademarks and industrial models of the products have been logged in the corresponding registers. The technical information provided by Escofet about its products can be modified without prior notice.

Escofet 1886 S.A
Head office and production

Montserrat, 162
E 08760 Martorell
Barcelona - España
T. 0034 937 737 150
F. 0034 937 737 151

info@escofet.com
www.escofet.com



GA-2005/0072 SST-0090/2010 ER-0403/2016