

**Petra** is a collection of three concrete pieces of different sizes and organic shapes that evoke the nature of stones eroded by water. Designed as community seats to blend into public space or locations with scenic value. As an isolated element or combined in groups, they create recreational meeting points and stimulate communication, movement and a safe way for children to play.

Concrete | 📏 195 cm | ⚖️ 2027 kg | 🪪 6

🔄 Update 10.07.2023



**Origen**

Developed in response to the tactical urban planning interests of timing and also to discourage vehicle access to quiet public spaces. Incorporate the concept of a playable city encouraging sociability and motor learning.

**Design**

Using oblong geometry and with their entire surface lightly curved, the *Petra S* and *Petra L* models are light inside to reduce weight.

**Material**

Molded concrete without reinforcement, speckled finish and in colors from the standard *Escofet* chart.

**Installation**

*Petra XS* resting on the paving, and anchored with three screws threaded through sleeves recessed in base. *Petra S* and *Petra L* attached by using two slings, installation is as simple as suspending them over a pavement, compacted sand or a grass lawn, with no need for anchoring. The recessed base allows the slings to pass through for loading and unloading.





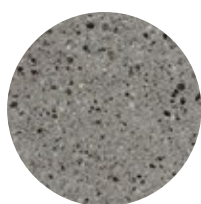
# 1. Backless Bench

| Petra             | XS               | S                 | L                 |
|-------------------|------------------|-------------------|-------------------|
| <b>Dimensions</b> | 110 x 95 x 47 cm | 188 x 117 x 48 cm | 195 x 192 x 50 cm |
| <b>Weight</b>     | 728 kg           | 1366 kg           | 2027 kg           |

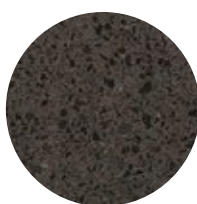
## 1.1 General features

|                 |                         |               |               |
|-----------------|-------------------------|---------------|---------------|
| <b>Material</b> | Concrete                | <b>Fixing</b> | Free-standing |
| <b>Finish</b>   | Etched and waterproofed |               |               |

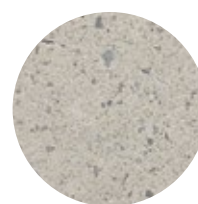
### Colours



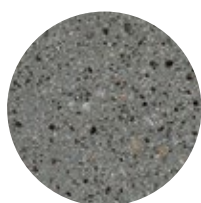
**GR.** Grey



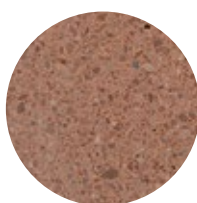
**NG.** Black



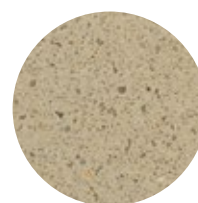
**BL.** White



**CA.** CA Grey



**RA.** Red



**BG.** Beige

## 1.2 Installation system

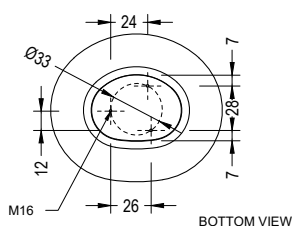
### Hoisting

P= 728 kg / 1366 kg / 2027 kg

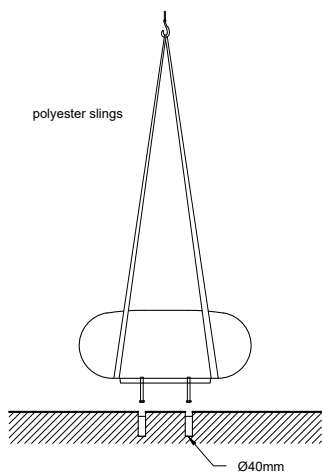
### Installation

*Petra XS:* Drill pavement Ø40 x 180 mm and fill with resin or fat mortar. Tightly screw the 2 stud bolts Din 931 M16 x 140 mm. Center and caulk the bench foot all around.

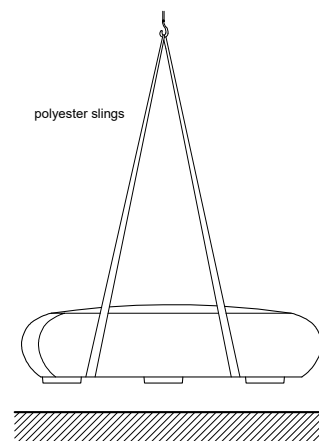
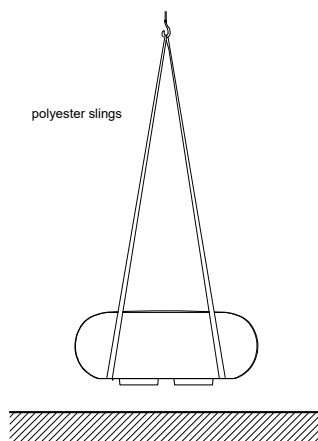
Petra XS



Petra S

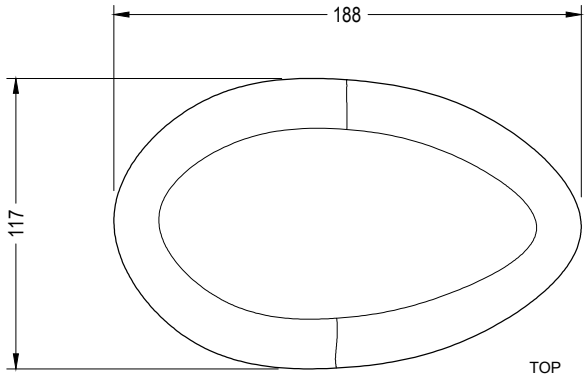
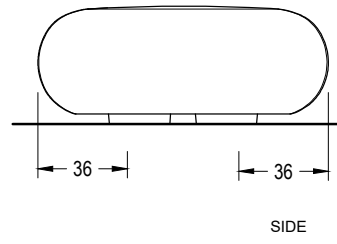
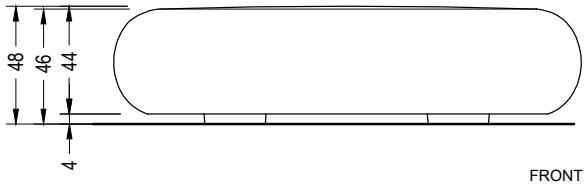


Petra L

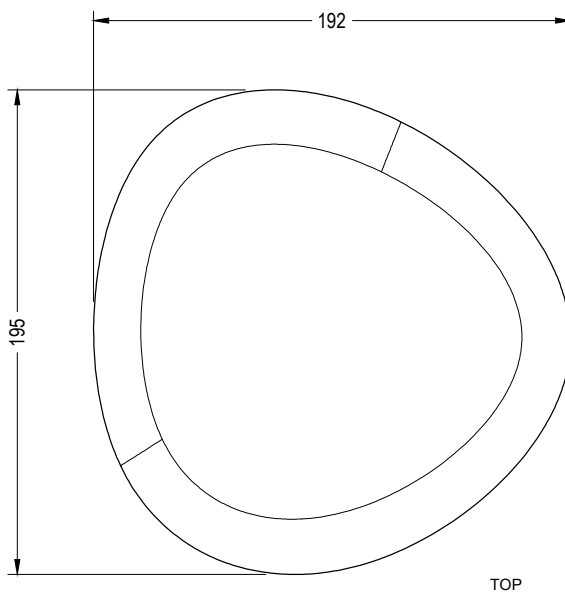
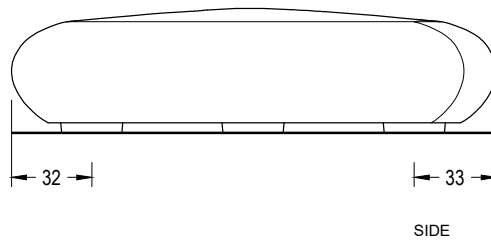
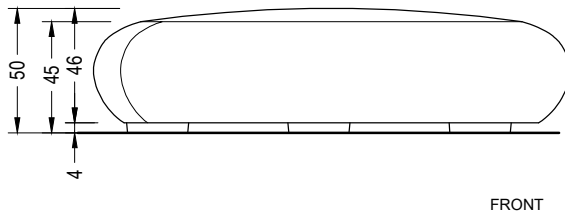


## 1.3 Geometry

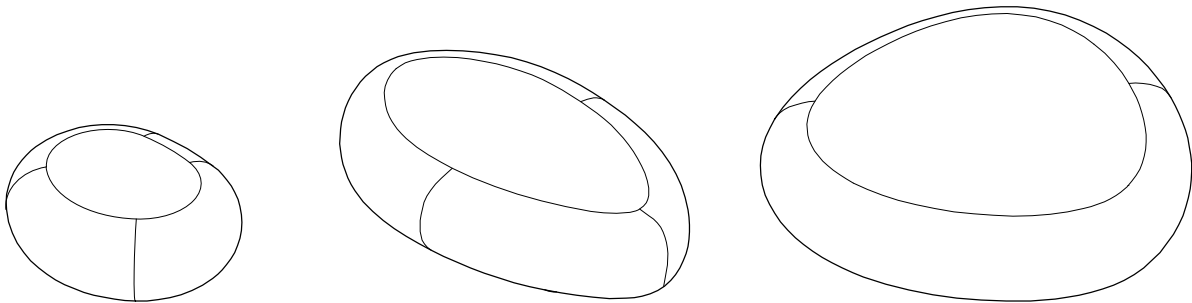
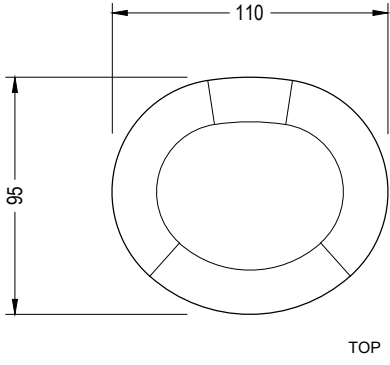
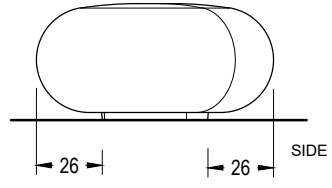
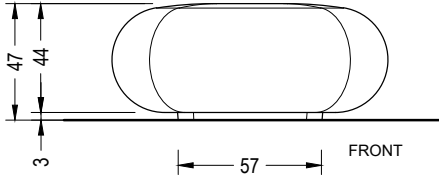
### Petra S



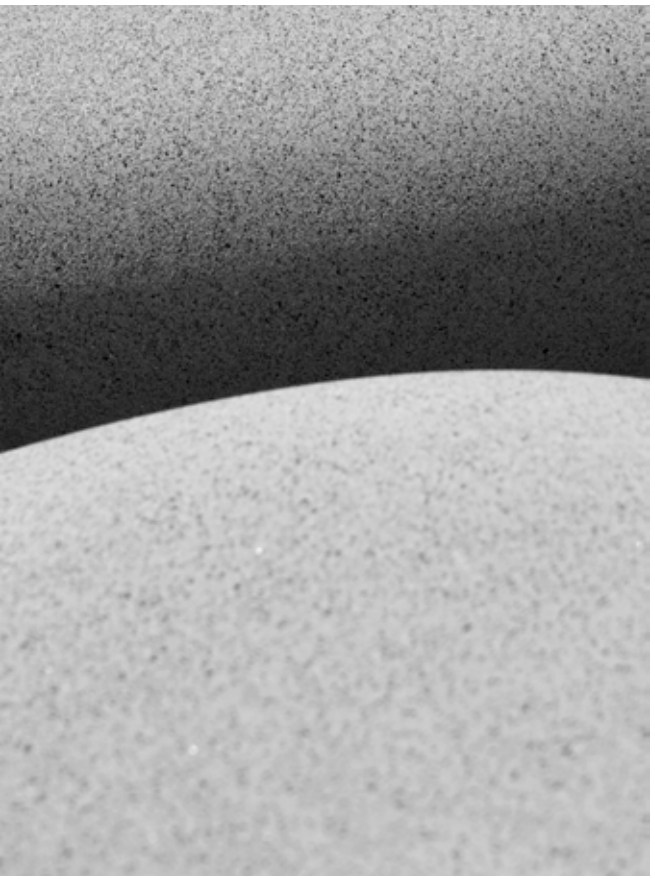
### Petra L



Petra XS



PETRA



Escofet®



## Warranty

5 years in concrete elements

The names, trademarks and industrial models of the products have been logged in the corresponding registers. The technical information provided by Escofet about its products can be modified without prior notice.

Escofet 1886 S.A  
Oficina central y producción

Montserrat, 162  
E 08760 Martorell  
Barcelona - España  
T. 0034 937 737 150  
F. 0034 937 737 151

info@escofet.com  
www.escofet.com



GA-2005/0072 SST-0090/2010 ER-0403/2016