

BOLLARD

Escofet_Lab

1994-2009

BOLLARD is a collection of concrete spheres that organise and delimit public space. They come in four different diameters of 40, 55, 70 and 90 cm and in the form of a half sphere with a diameter of 70 and 90 cm.

Concrete | Ø 900 cm | 455 kg

Update 15.07.2025



Escofet
by Molins^o

ORIGIN

Originally conceived as a space-defining element, the Bollard collection has evolved through its multiple combinatory possibilities, becoming one of the most versatile on the market. Designed to adapt to all types of public space projects, the sphere transforms into an object for seating, play, rest, and imagination.

MATERIAL

Reinforced concrete with an etched finish and in the standard Escofet chart colours.

INSTALLATION

Bollards 400 and 550 are anchored to the paving with one M16 x 140 mm screw. Bollards 700 and 900 are anchored with one M20 x 200 mm screw and fixed with resin in a hole with a diameter of 40 mm.



BOLLARD



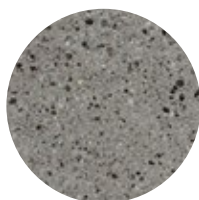
1. Boundary

Bollard	400	550	700	700	900	900 Media esfera
Dimensions	Ø400	Ø550	Ø700	Ø700	Ø900	Ø900
Weight	85 kg	115 kg	440 kg	220 kg	910 kg	455 kg

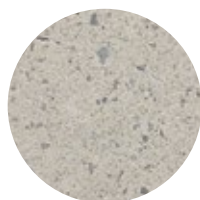
1.1 Características generales

Material	Concrete	Fixing	Anchored with screws
Finish	Etched and waterproofed		

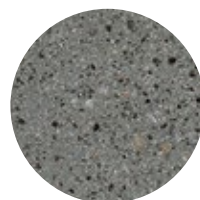
Colours



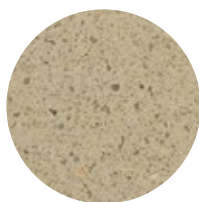
GR. Grey



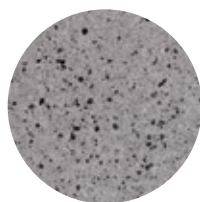
BL. White



CA. CA Grey



BG. Beige



EGR. Eco-Grey®

1.2 Installation system

Hoisting

(W= 85 / 115 / 440 / 910 / 455 kg)

Installation

Bollard 400, 550 y Media esfera

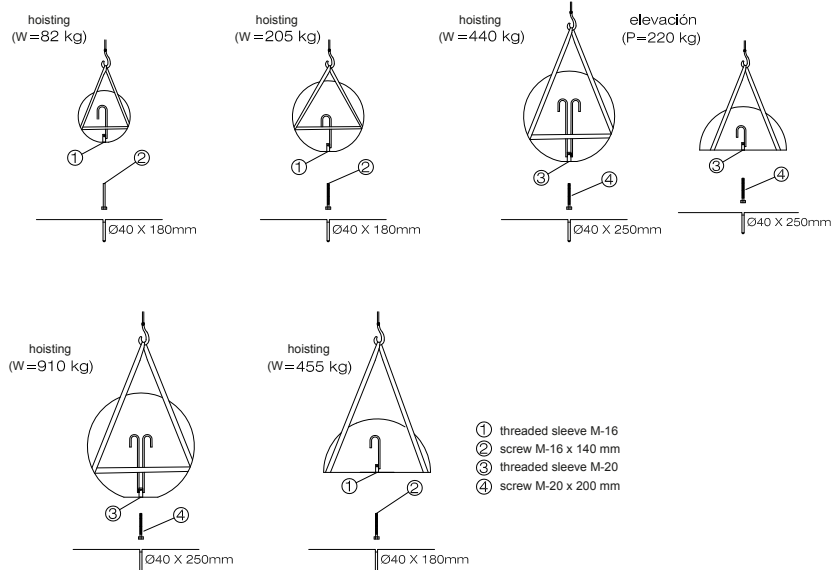
Tightly screw the stud bolt M16x140 mm. Drill pavement (Ø40x180 mm) and fill with resin or fat mortar. Center and caulk the bench foot all around.

Bollard 700, 900 and 700 Media esfera

Tightly screw the stud bolt M20 x 200 mm. Drill pavement (Ø40x200 mm) and fill with resin or fat mortar. Center and caulk the bench foot all around.

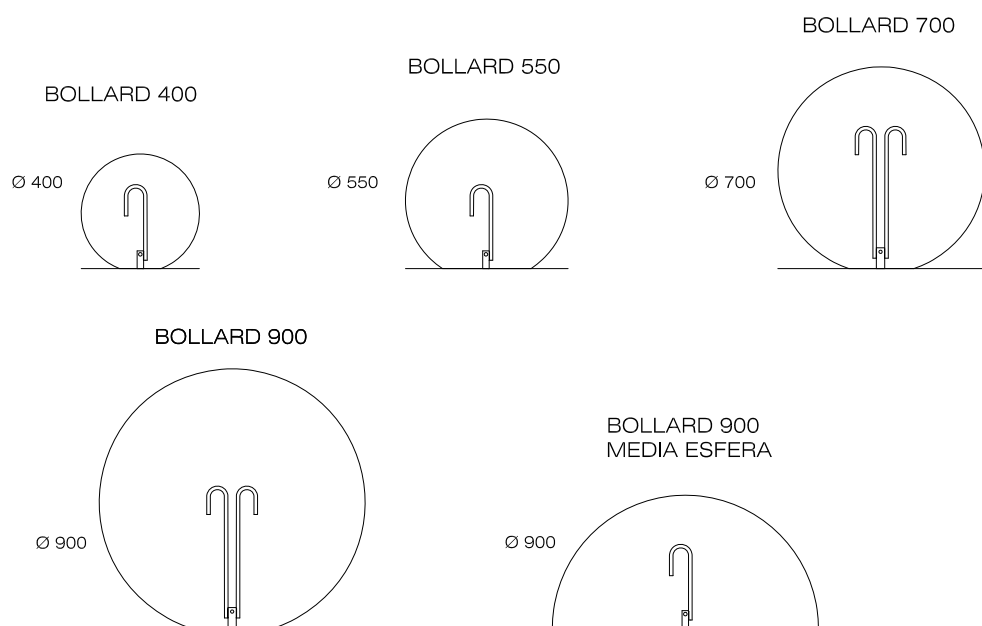
1.2 Installation system

Bollard 400, 550, 700, 900, 900 and 700 Media esfera



1.3 Geometry

Bollard 400, 550, 700, 900, 900 and 700 Media esfera





Warranty

5 years in concrete elements.

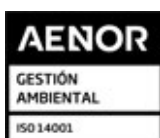
The names, trademarks and industrial models of the products have been logged in the corresponding registers. The technical information provided by Escofet about its products can be modified without prior notice.

Escofet 1886 S.A
Head office and production

Montserrat, 162
E 08760 Martorell
Barcelona - España
T. 0034 937 737 150
F. 0034 937 737 151

info@escofet.com
www.escofet.com

Escofet
by Molins[®]



GA-2005/0072



SST-0090/2010



ER-0403/2016

