



EQUAL Comfort is a bench with a simple geometry formed by a combination of concrete and the warmth of wood, which uses proportion and balance to create a space in which to sit and share. EQUAL Concrete has the same geometry regardless of wood. Available in 2 or 3 meters in length it offers a comfortable and attractive surface. In all its models it allows to incorporate LED lighting under the seat.

FSC® Certified Wood | Concrete |  298 cm/max |  1140 kg |  5

Add-ons:  | LED

 Update 22.05.2025



ORIGIN

It is the result of a tender process organised to reduce vehicle traffic in the site formed by the squares known as “Santa Maria i els Herois” in the historical centre of the city of Puigcerdà.

DESIGN

The balance of its volume due to the union that shapes the base of the bench and emerges as the back.

The balance of its inclined planes and their orthogonal planes, which create a simple but surprising geometry. The balance of the two materials that are joined so that each stands out from the other: the coldness of the concrete and the warmth of the wood.

USABILITY

The balance between its possibilities of use, since it allows users to sit on it with or without the back, in lengths of 2 or 3 meters and with LED lighting option 24V - 6000K - IP67 and equipped with Driver and registration cover in 316L stainless steel.

MATERIAL

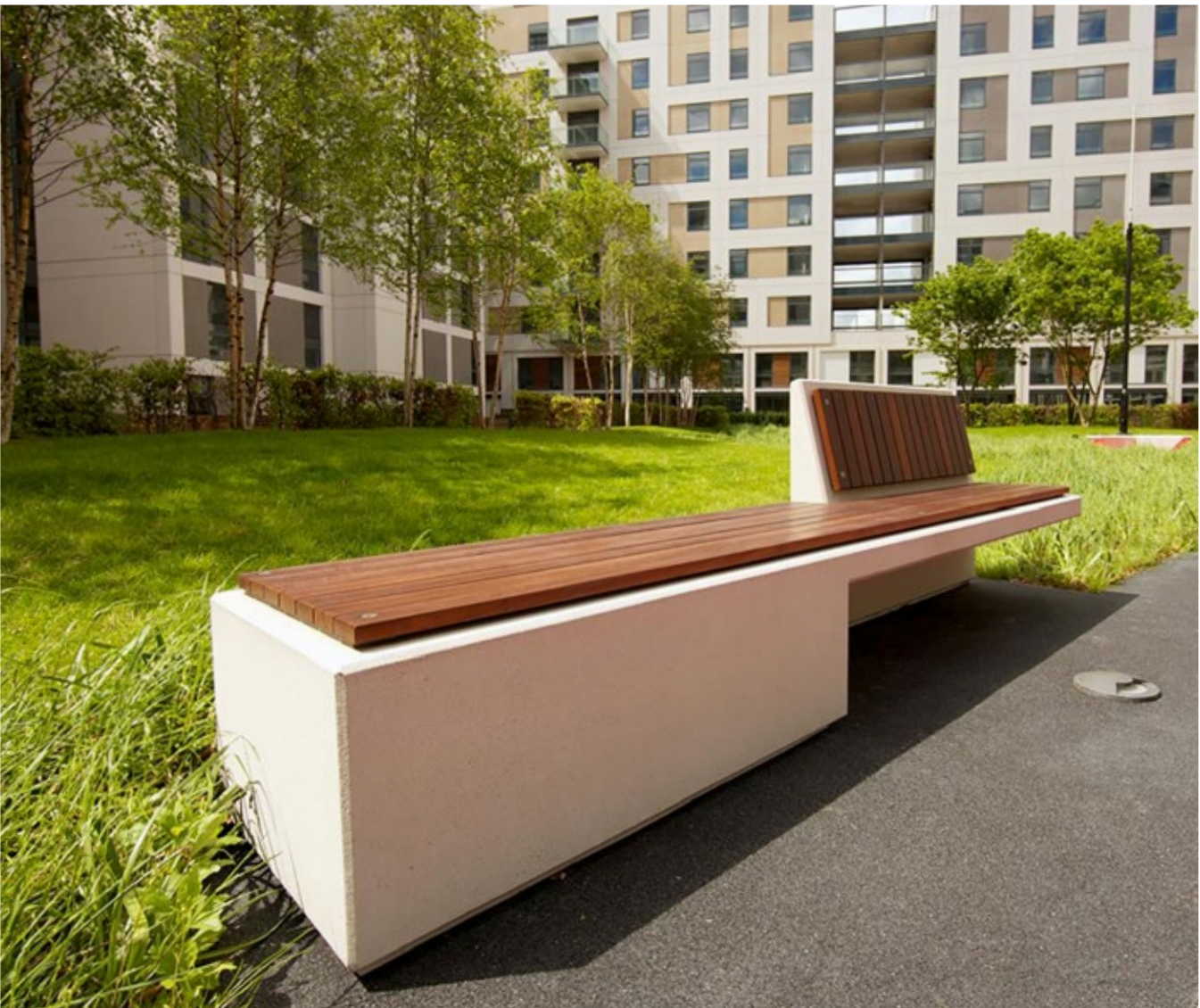
Dry-mix concrete reinforced with stainless steel. Etched finish and colour in accordance with the standard Escofet colour chart. EQUAL Comfort models, seat and backrest formed by strips of FSC® tropical wood protected by Lasur. The bench is offered with option of armrests in galvanized steel painted silver color 6 mm thick. Screws included in stainless steel.

INSTALLATION

It is self-stabilising and can rest on the paving, lawn or sand with no need for anchors.



EQUAL



Escofet
by Molins^c

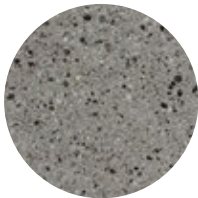
1. Bench

Equal		300	200
Dimensions		298 x 60 x 46 (88) cm	200 x 60 x 46 (88) cm
Weigh	Concret	1093 kg	781 kg
	Comfort	1140 kg	812 kg
Lighting (optional)	LED 8 -15 W; 4000° K o 3000°K	Driver	24V / IP67

1.1 General features

Material	Concrete	Fixing	Free-standing
Finish	Etched and waterproofed		
Finish	Tropical wood FSC®		

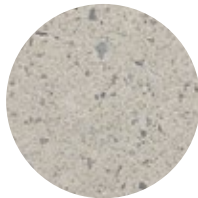
Colours



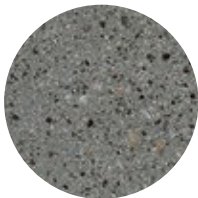
GR. Grey



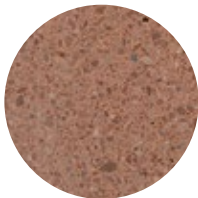
NG. Black



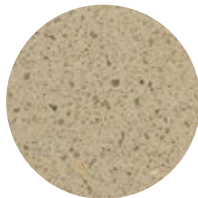
BL. White



CA. Grey CA



RA. Red



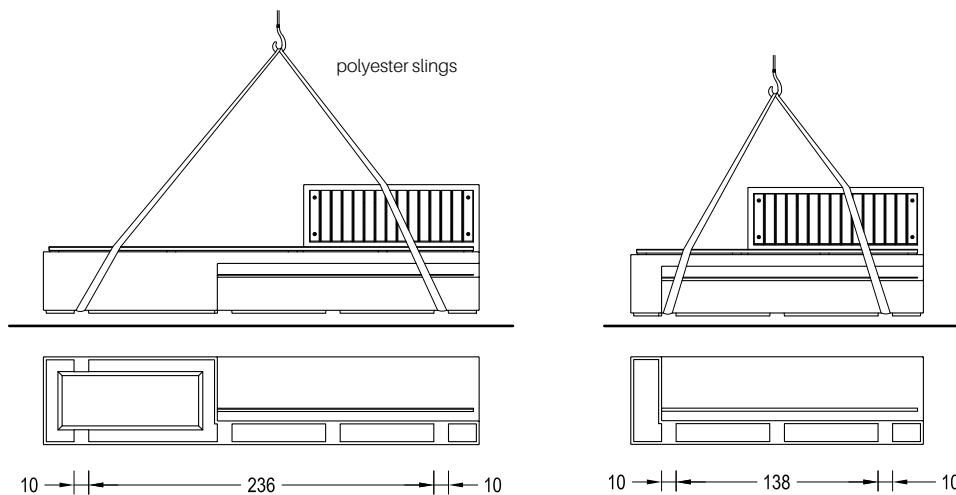
BG. Beige



A. Tropical wood FSC®

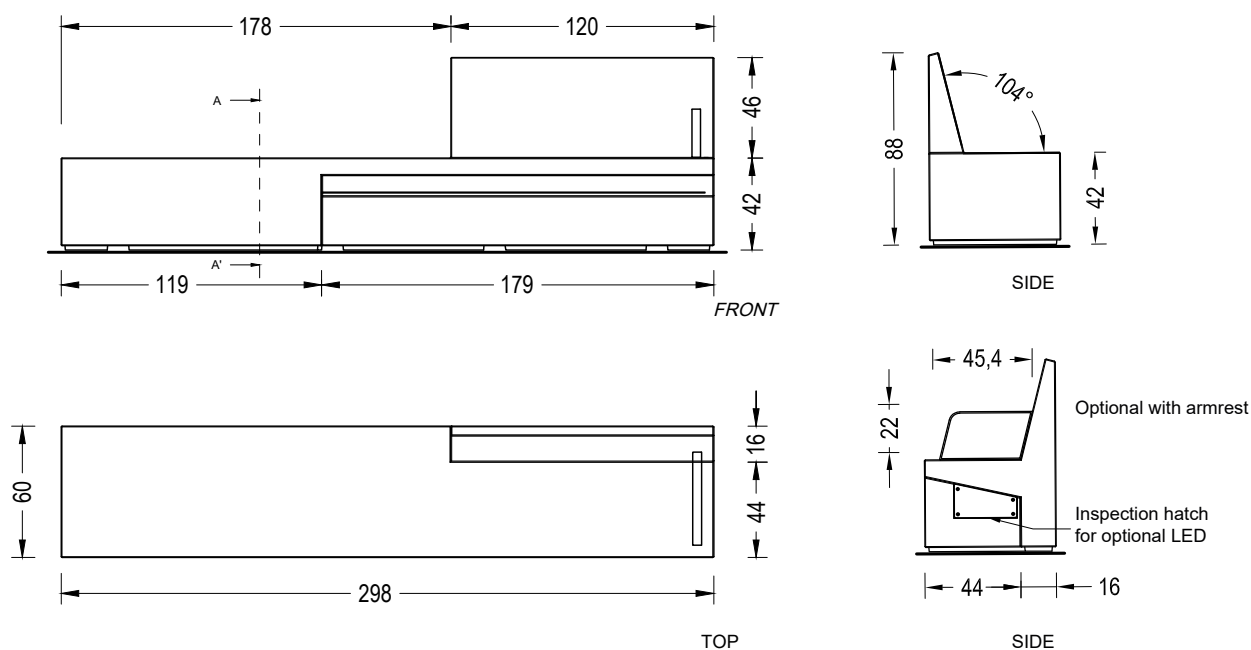
1.2 Installation system

Hoisting
(P=1140 kg / 1093 kg
812 kg / 781 kg)

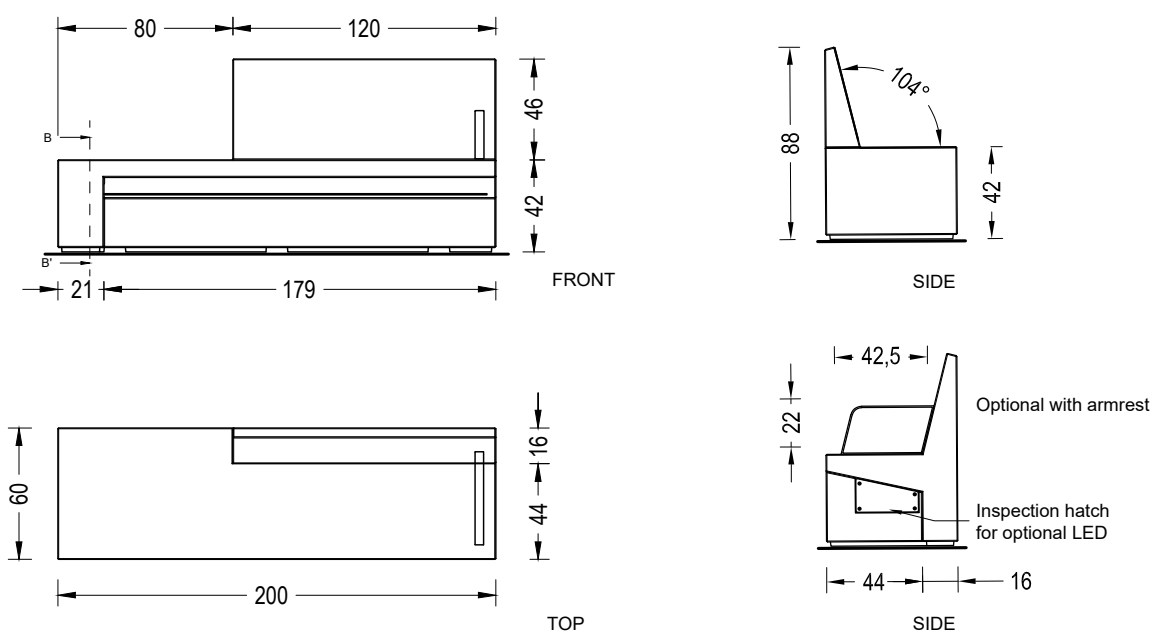


1.3 Geometry

Equal Concrete 300



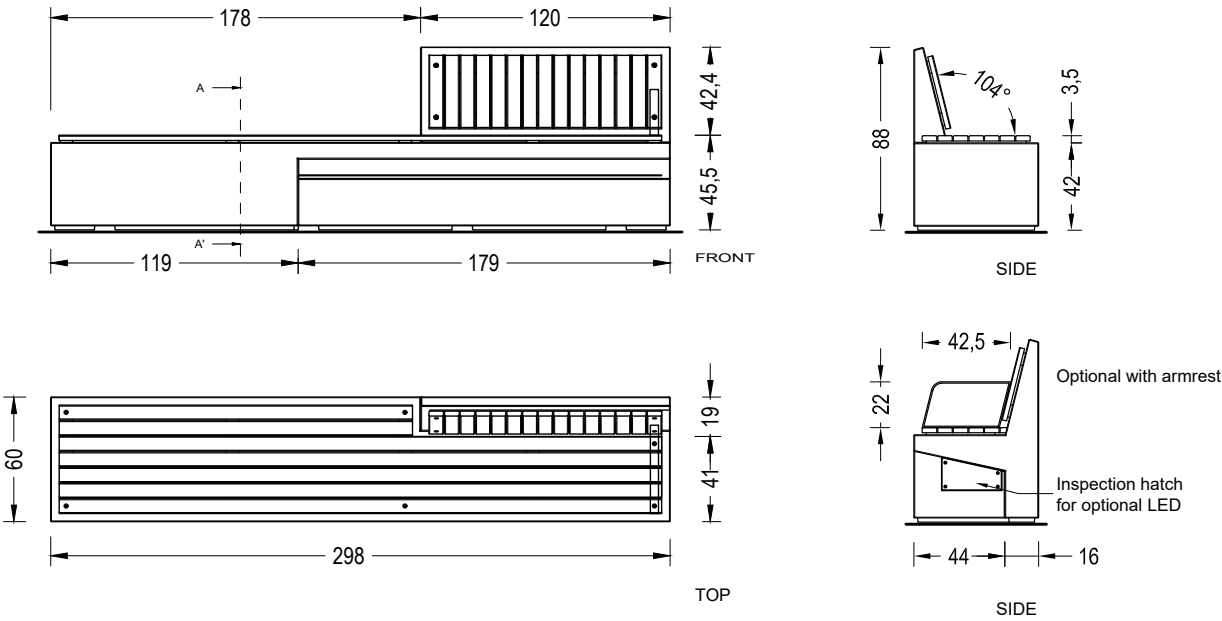
Equal Concrete 200



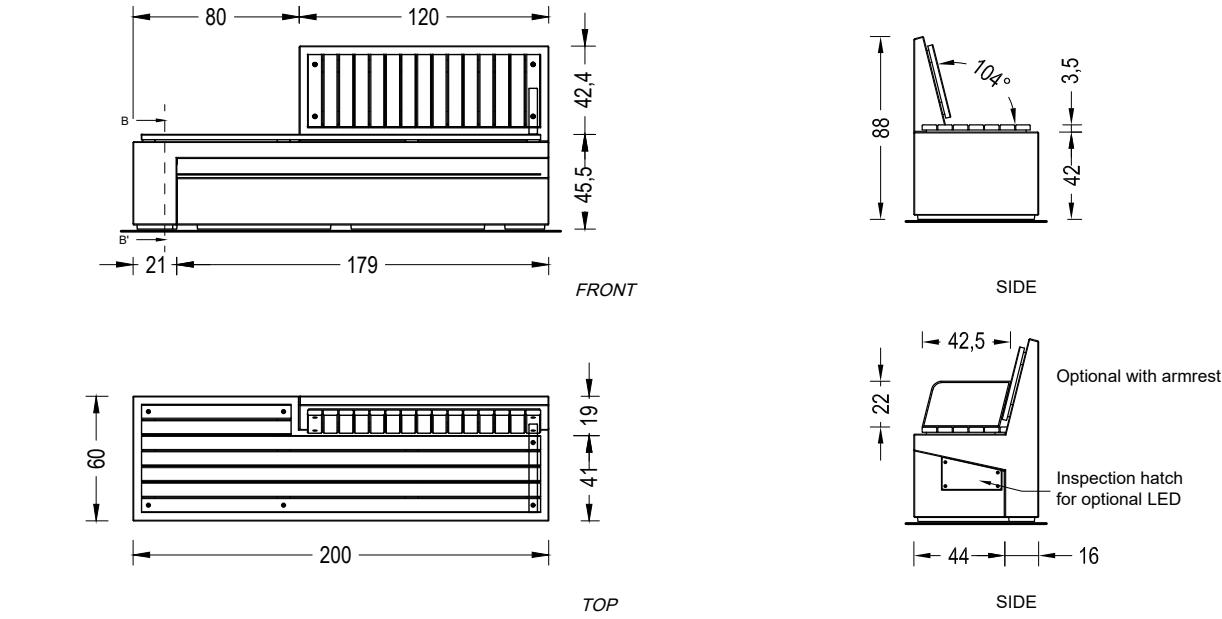
EQUAL

1.3 Geometry

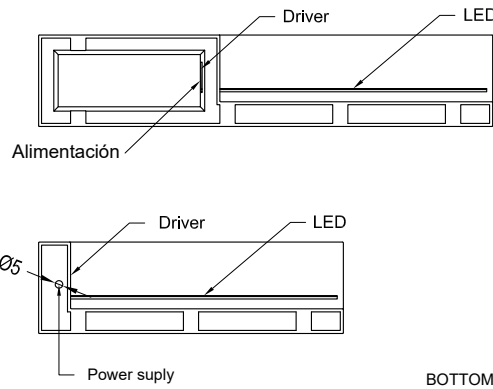
Equal Comfort 300



Equal Comfort 200



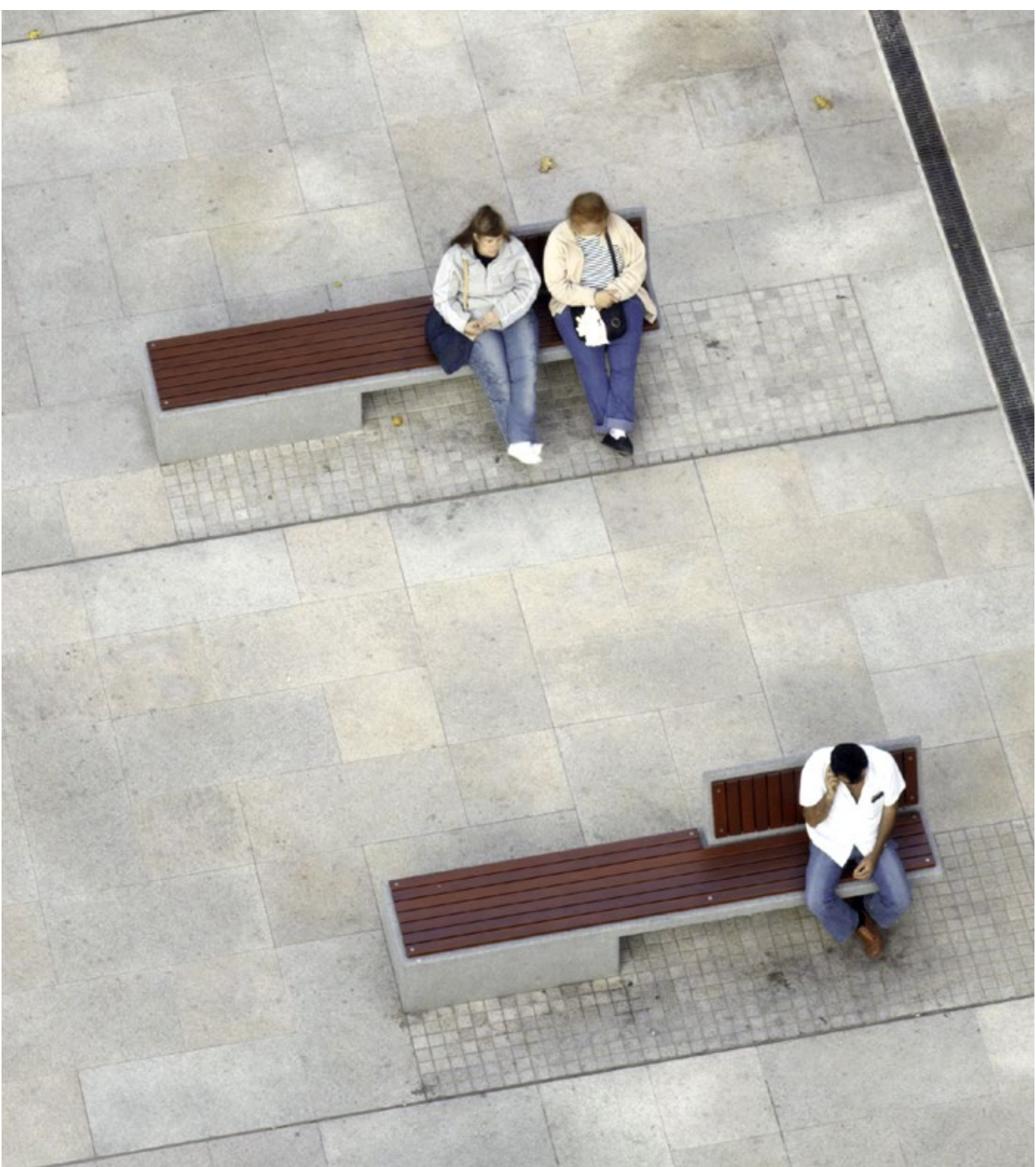
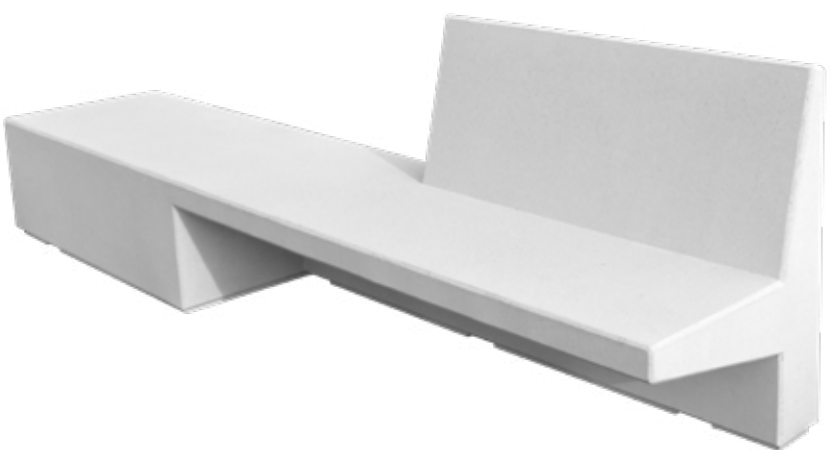
1.4 Lighting



LED	
Operating voltage	24V
Power	8-15W/m
Color temperature	4000/3000 K
Degree of protection	IP67

Driver Vossloh or similar	
Power	30W
Voltage	220-240V
Frequency	50-60Hz
Power factor	>0,9
Degree of protection	IP67

EQUAL



Escofet
by Molins[©]



Warranty

5 years in concrete elements.

The names, trademarks and industrial models of the products have been logged in the corresponding registers. The technical information provided by Escofet about its products can be modified without prior notice.

Escofet 1886 S.A
Head office and production

Montserrat, 162
E 08760 Martorell
Barcelona - España
T. 0034 937 737 150
F. 0034 937 737 151

info@escofet.com
www.escofet.com