







GARONNE is a set of three modular backless benches; Garonne Aran, Garonne Toulouse and Garonne Bordeaux, with rounded top corners, symbolising the effects of the river that has eroded its edges. In the Garonne Aran and Bordeaux models, the seat has two different heights for use as a “chaiselongue”. The smaller one is adapted for children.

Concrete |  200 cm/max |  1230 kg |  8

Add-ons:  | 

 Update 31.07.2025



## ORIGIN

The GARONNE backless bench was designed for the stations of the first Toulouse tramway line, now known as Ligne Garonne, as its recent extension makes it necessary for it to cross this river. Aran is the name of the valley where the river Garonne rises, Toulouse is the city in the middle of the river, and Bordeaux is the name of the city where it flows into the Atlantic.

## DESIGN

The overall dimensions of three models, Aran, Toulouse and Bordeaux, is 200 x 60 cm and 45 cm in height. Bordeaux model has a depressed area of 31 cm on the surface of the seat joined to the upper plane by an inclined plane, on the contrary Aran has an emergent profile. The 5 cm baseboard, which is set back, conceals the support surface, allowing its weightless mass to levitate above its shadow.

## MATERIAL

Moulded concrete with an acid-etched finish and in the Escofet catalogue standard chart colour.

## INSTALLATION

Resting on the paving, and optionally anchored with two screws threaded through sleeves recessed in base.





# GARONNE



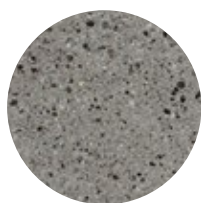
## 1. Backless bench

Garonne	Bordeaux	Toulouse	Aran
<b>Dimensions</b>	200 x 60 x 45 (31) cm	200 x 60 x 45 cm	200 x 60 x 45 (65) cm
<b>Weight</b>	970 kg	1230 kg	1410 kg

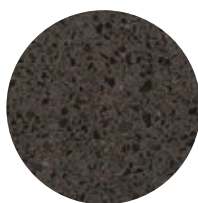
### 1.1 General features

<b>Material</b>	Concrete Recycled Concrete	<b>Fixing</b>	Anchored with screws
<b>Finish</b>	Etched and waterproofed		

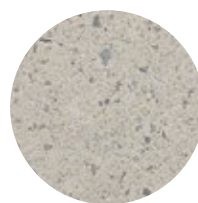
### Colours



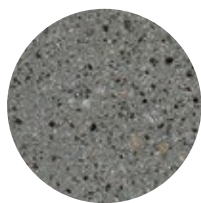
**GR.** Grey



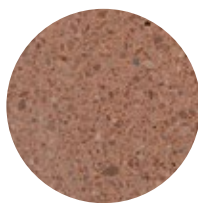
**NG.** Black



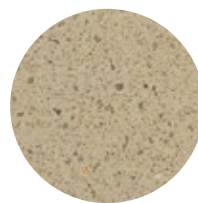
**BL.** White



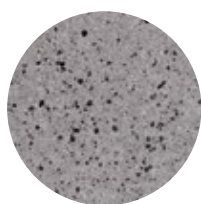
**CA.** CA Grey



**RA.** Red



**BG.** Beige



**EGR.** Eco-Grey®

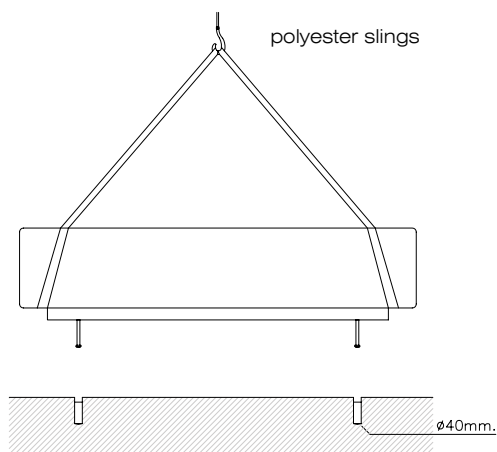
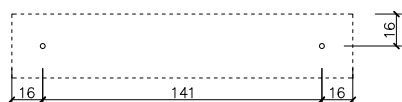
### 1.2 Installation system

#### Hoisting

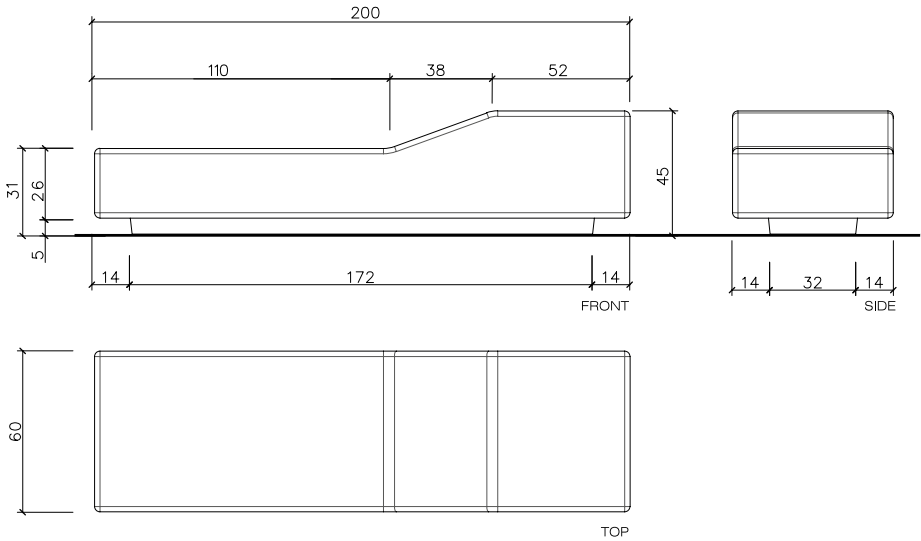
W=970 kg / 1230 kg / 1410 kg

#### Installation

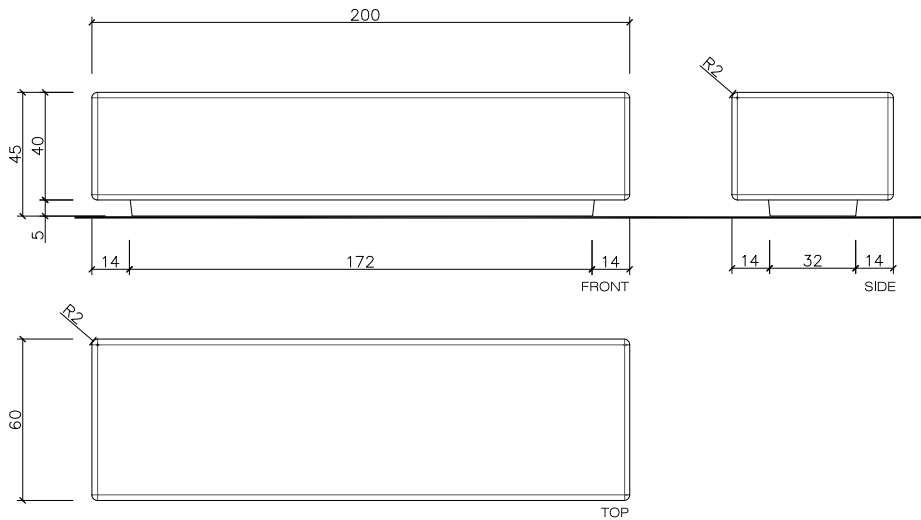
Tightly screw the 2 bolts (Ø16 x 140), drill pavement and fill with resin.



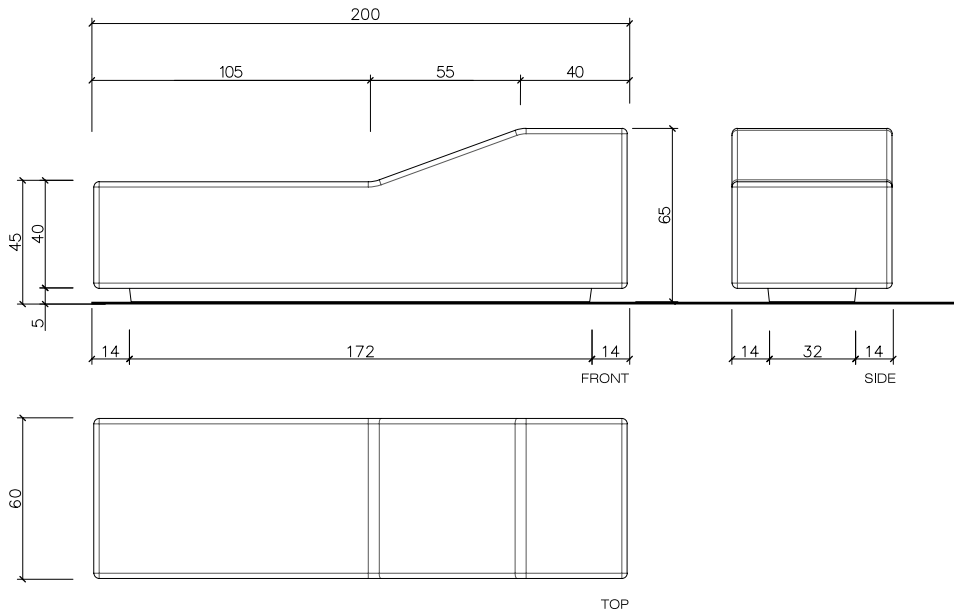
Garonne Bordeaux



Garonne Toulouse



Garonne Aran







## Warranty

5 years in all its components.

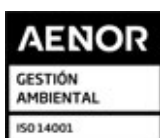
The names, trademarks and industrial models of the products have been logged in the corresponding registers. The technical information provided by Escofet about its products can be modified without prior notice.

Escofet 1886 S.A  
Head office and production

Montserrat, 162  
E 08760 Martorell  
Barcelona - España  
T. 0034 937 737 150  
F. 0034 937 737 151

info@escofet.com  
www.escofet.com

**Escofet**  
by **Molins**®



GA-2005/0072



SST-0090/2010



ER-0403/2016

