



The ICARIA tree grate offers a continuity of texture and finish in delimiting the paving around a tree. Its surface is slightly inclined towards the interior, converting it into yet another element of the paving. Its delicate geometry contributes to collecting rainwater that can be used for watering.

Concrete |  120 cm/max |  402 kg

 Update 28.07.2025



## ORIGIN

It was originally designed for a project on Avenida Icaria in the Villa Olímpica of Barcelona.

## DESIGN

The ICARIA tree grate is formed by two symmetrical pieces with a central opening of 55 cm in diameter. There is a transition between the orthogonal geometry of the paving and the circular perimeter of the central opening.

## MATERIAL

Reinforced concrete with an etched, water-repellent finish. Available in colour grey, recycled material made from reclaimed concrete aggregates.

## INSTALLATION

It is installed embedded and flush with the paving.





# ICARIA



1. Tree grates

Icaria

Dimensions120 x 120 x 20 cm

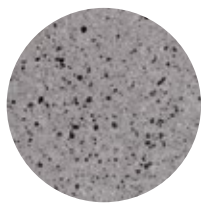
Weight402 kg

1.1 General features

Material	Recycled Concrete	Fixing	Embedded on pavement level
----------	-------------------	--------	----------------------------

Finish	Etched and waterproofed
--------	-------------------------

Colours

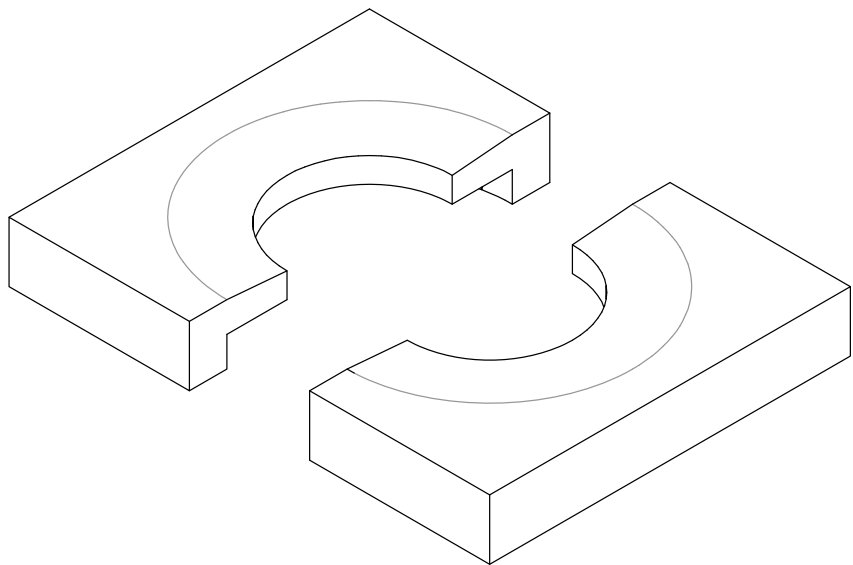


EGR. Eco-Grey®

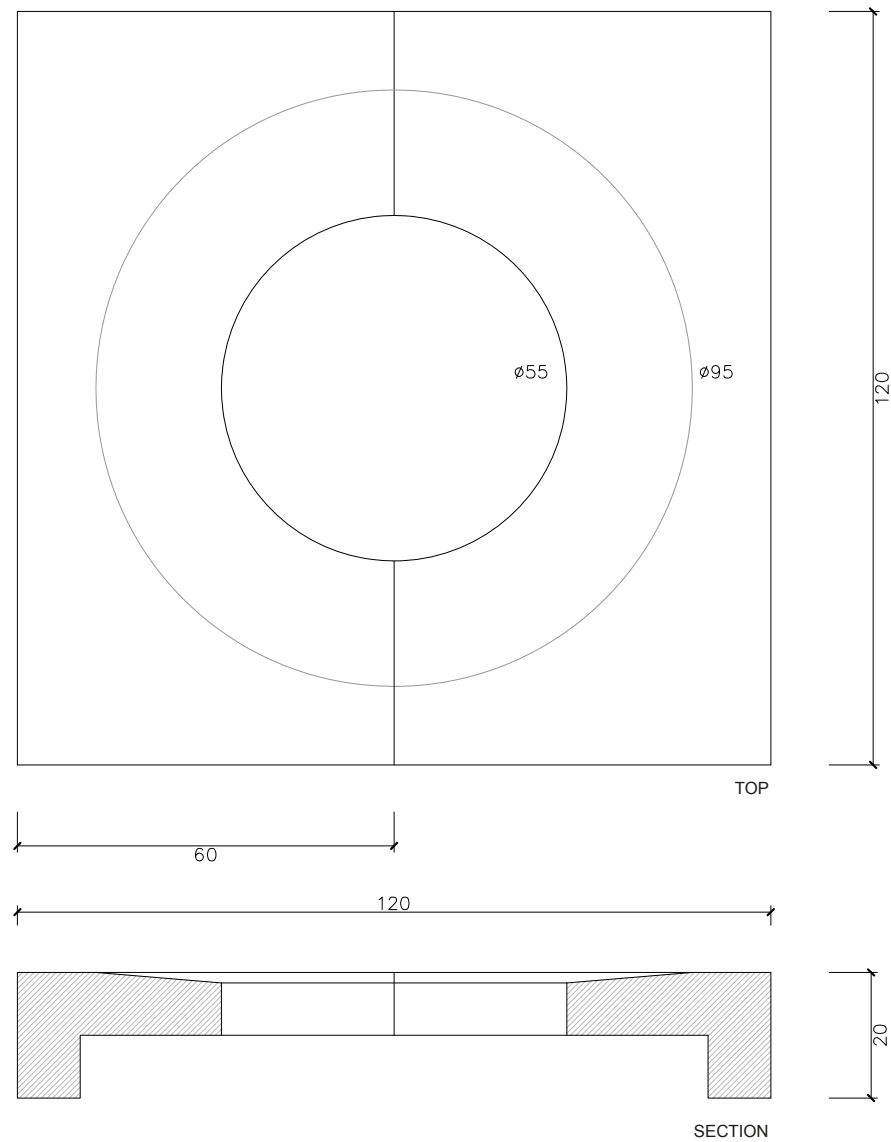
1.2 Installation system

Hoisting  
W= 402 kg

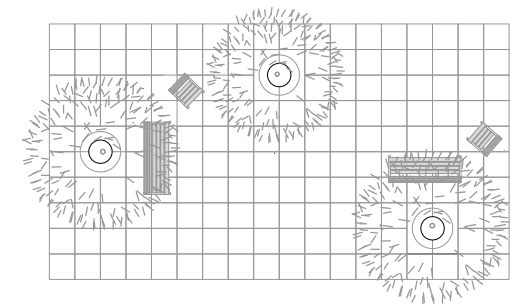
Installation  
Excavate the land and make foundations. Place the framework of the tree grate and deliver the flush pavement to level 0.



Icaria



Example of placement





## Warranty

5 years in concrete elements.

The names, trademarks and industrial models of the products have been logged in the corresponding registers. The technical information provided by Escofet about its products can be modified without prior notice.

Escofet 1886 S.A  
Head office and production

Montserrat, 162  
E 08760 Martorell  
Barcelona - España  
T. 0034 937 737 150  
F. 0034 937 737 151

info@escofet.com  
www.escofet.com

**Escofet**  
by **Molins**®



GA-2005/0072



SST-0090/2010



ER-0403/2016

