

PROTECTOR VADO

Enric Pericas 1999

Escofet
by Molins[®]

The installations of Protector VADO is used to prevent parked vehicles from obstructing others as they entering or leaving the parking zone. The triangular shape of the protector adapts to the direction of the vehicles in their maneuvers of circulation entering to or exiting from the parking.

Concrete | 📏 145 cm | ⚖️ 370 kg

🔄 Update 28.07.2025



ORIGEN

The triangular Protector VADO emerged in response to a request by the Barcelona Garage and Parking Guild to improve vehicle access to car parks with high-frequency customer rotation in city building basements. Its pioneer installation was in the year 1999 maintaining its validity until today.

DISEÑO

The design uses the same anchorage system for movement prevention as the bus platforms. The triangular shape of this protector adapts to the vehicle entry and exit directions. Its low height poses no danger to the undercarriage of vehicles parking in front of it. Like the Plataforma BUS platforms, Protector VADO includes horizontal grooves and reflective paint to make them visible in the dark.

MATERIAL

Reinforced concrete etched finished. Available in recycled grey.

INSTALLATION

It is installed simply standing on the asphalt pavement with three pins anchor metal rod M12 that prevent lateral movement without having to fix it with resin.



PROTECTOR VADO



1. Mobility

Protector Vado

Dimensions 160 x 145 x 15 cm

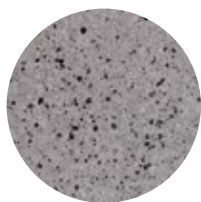
Weight 370 kg

1.1 General features

Material Recycled Concrete **Fixing** Fixed with pins

Finish Etched and waterproofed and reflective paint at edges

Colours



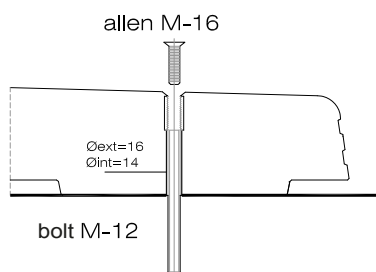
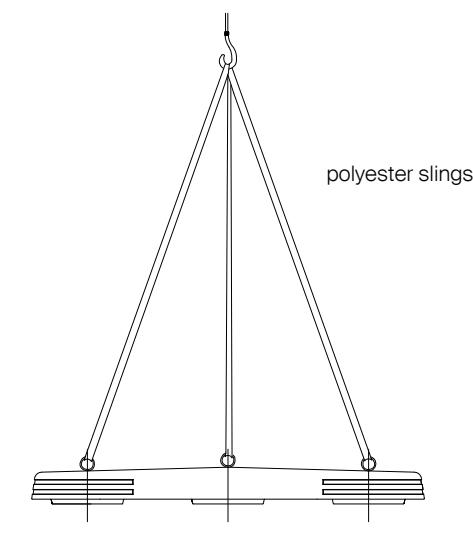
EGR. Eco-Grey®

1.2 Installation system

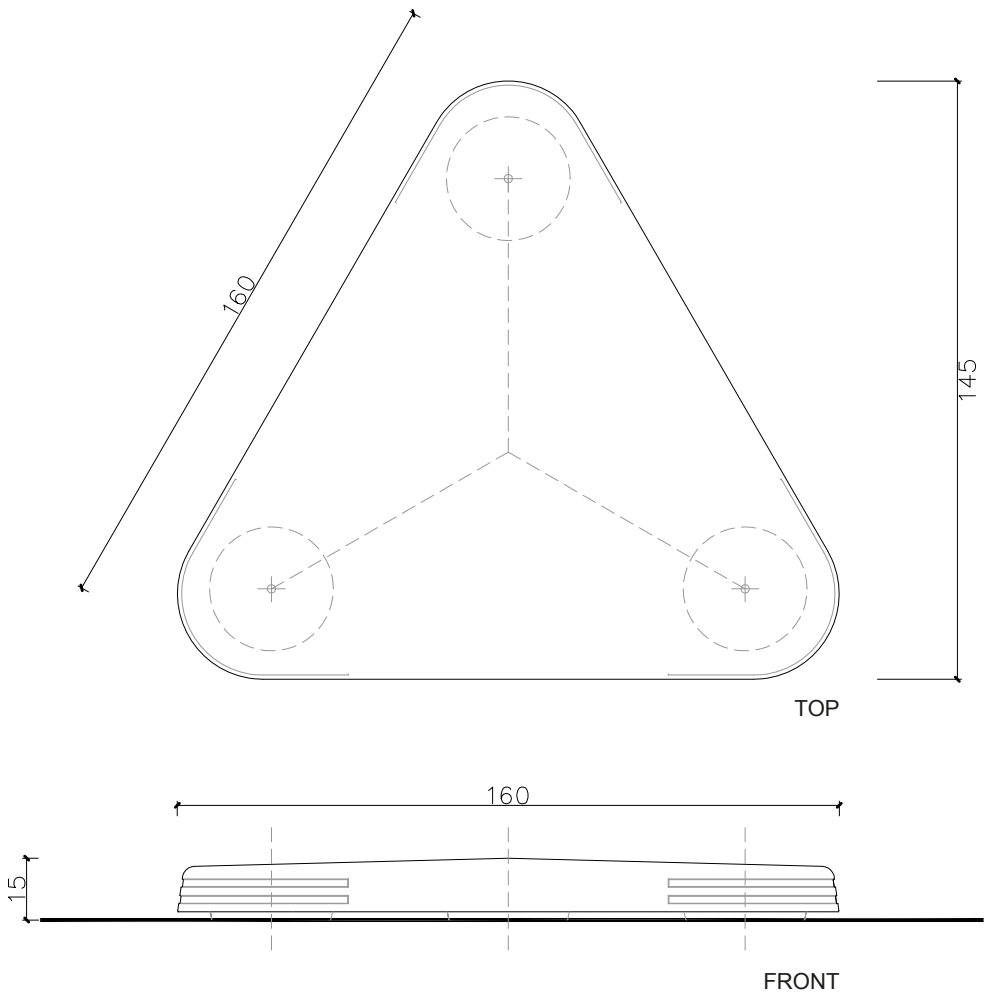
Hoisting
(W= 370 kg)

Installation

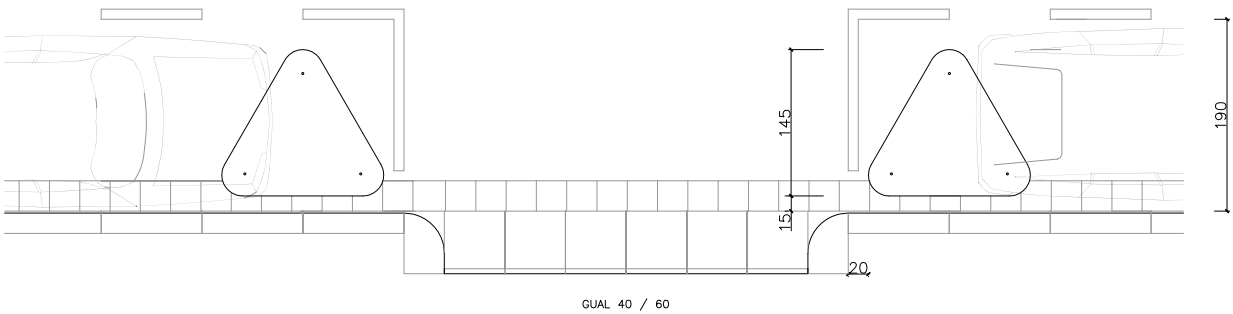
Anchor the element to the pavement after aligning the modules, then perforate with a reel 12 mm and depth 15 cm of depth and nail the corresponding pins M-12.



Protector Vado



Example of placement





Warranty

5 years in concrete elements.

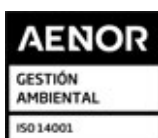
The names, trademarks and industrial models of the products have been logged in the corresponding registers. The technical information provided by Escofet about its products can be modified without prior notice.

Escofet 1886 S.A
Head office and production

Montserrat, 162
E 08760 Martorell
Barcelona - España
T. 0034 937 737 150
F. 0034 937 737 151

info@escofet.com
www.escofet.com

Escofet
by Molins[®]



GA-2005/0072



SST-0090/2010



ER-0403/2016

