

# PUSH

SCOB arquitectes 2015

PUSH is a boundary marker and occasional seat made from concrete, in the shape of a series of small cylinders that appear to float on the paving, to separate public pedestrian space from areas with traffic.

Concrete | Ø 30 cm | ⚖ 64 kg

🔄 Update 30.07.2025



## ORIGIN

It responds to the need for the development of a series of concrete elements that function as markers and/or occasional seats in the project for the remodelling of Plaza Urdanibia in the historical centre of Irún in Guipuzcoa.

## DESIGN

The cylindrical concrete volume has a baseboard of 3 cm that separates it from the ground, leaving a shadow joint.

## MATERIAL

PUSH is a small moulded concrete element with an etched finish and is supplied in the standard Escofet chart colours.

## INSTALLATION

It is designed to be anchored to the paving with three threaded M16 x 140 mm screws inserted and fastened with resin in holes with a diameter of 25 mm.

# PUSH





# PUSH



1. Boundary

Push

Dimensions Ø30 x 40 cm

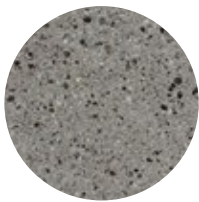
Weight 64 kg

1.1 General features

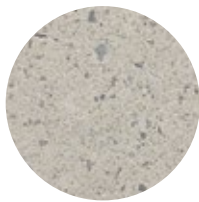
Material Concrete Recycled Concrete      Fixing Anchored with screws

Finish Etched and waterproofed

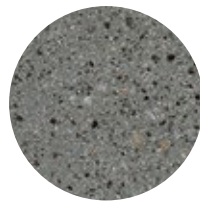
Colours



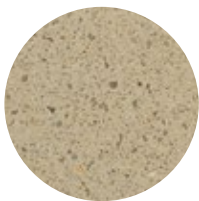
GR. Grey



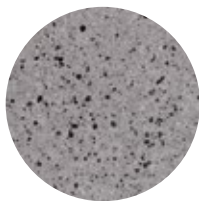
BL. White



CA. CA Grey



BG. Beige

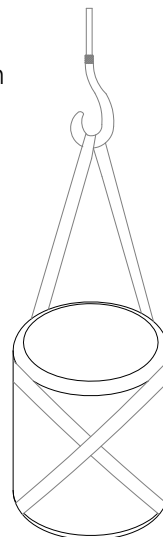
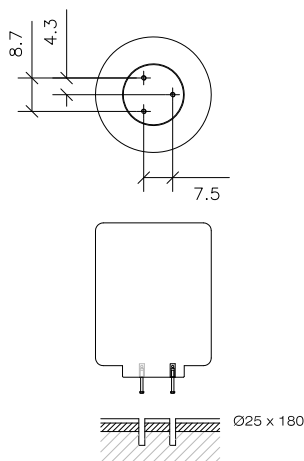


EGR. Eco-Grey®

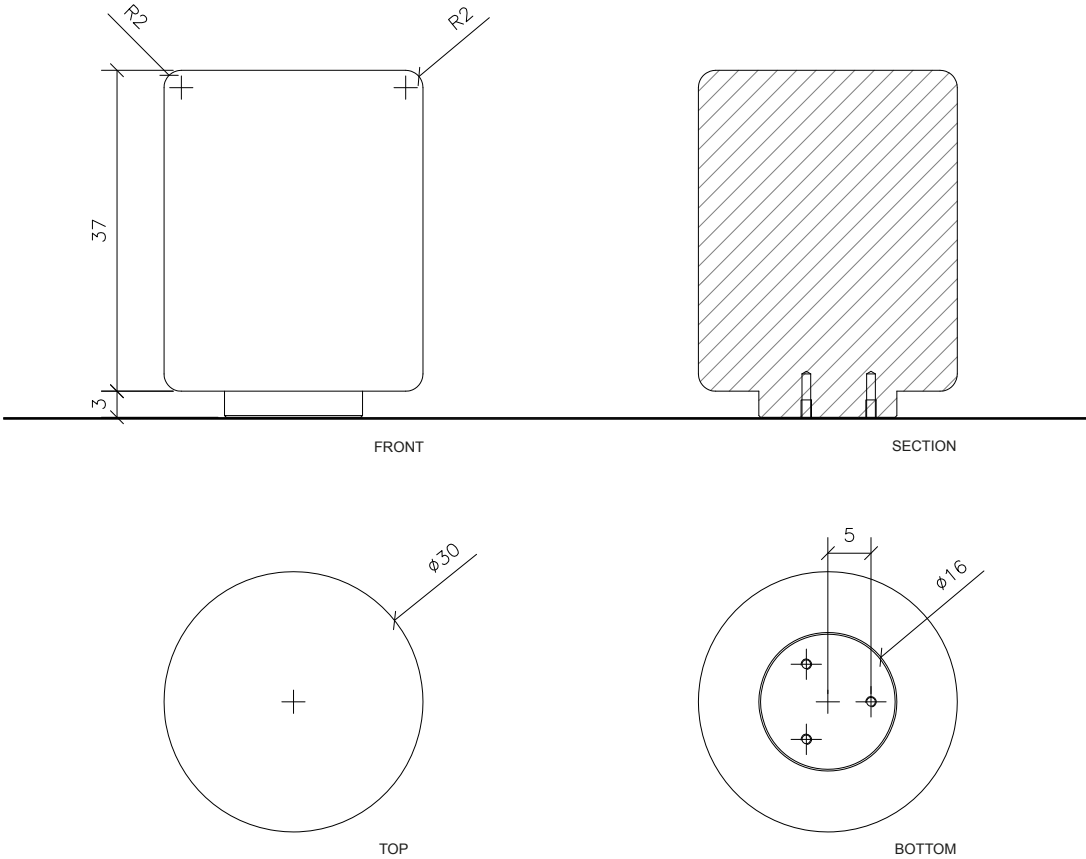
1.2 Installation system

Hoisting  
(W= 64Kg)

Installation  
Tightly screw the 3 stud bolts M-12x140 mm. Drill pavement (Ø40x180 mm) and fill with resin or fat mortar. Center and caulk the bench foot all around.



Push





## Warranty

5 years in all its components.

The names, trademarks and industrial models of the products have been logged in the corresponding registers. The technical information provided by Escofet about its products can be modified without prior notice.

Escofet 1886 S.A  
Head office and production

Montserrat, 162  
E 08760 Martorell  
Barcelona - España  
T. 0034 937 737 150  
F. 0034 937 737 151

info@escofet.com  
www.escofet.com