

STUL

Stul is a functional stool for sitting on or that inspires jumping games. It is ideal for green areas and children's playgrounds. It can also be used as a pylon with a swivel seat on private terraces or in indoor areas such as libraries or other institutions. It stands out for its lightness and wide color palette.

Polyethylene HDPE | Ø 60 cm | 12 kg | 1

Update 02.07.2025



Escofet_Lab 2021

Escofet
by Molins^o

ORIGIN

Stul apperars to fill the need for a lightwei-
ght stool that can be combined with the rest
of Air Collection.

MODULAR

Stul is a versatile stool and can be installed
in multiple contexts. As a stool around a
table, combined in groupings and even as a
seat in children's play areas.

RECYCLED AND RECYCLABLE

It is monomaterial and 100% recyclable. The
option in black color is 100% recycled, and
consequently it is an environmentally sustain-
able product.

NON-POROUS

The peculiarity of non-porous HDPE material
means that its surface is easy to wash with
pressurised water and a degreasing detergent
that contains surfactants. It is disinfected with
a hydro-alcoholic solution.

MATERIAL

Made with rotomolded HDPE polyethylene,
it's available in a wide variety of colors.
This material offers great strength and du-
rability, however, it is possible that they may
suffer slight deformations over time in cases
of prolonged exposure to the sun, high tem-
peratures or intensive use. These variations
do not compromise the functionality of the
product.

With a threaded inspection chamber cover
permitting access to the interior.

INSTALLATION

Can be installed on the paving, and ancho-
red, if required, using a hidden and remova-
ble system of screws recessed in the paving.



STUL



Escofet
by Molins[®]

STUL



Escofet
by Molins[®]

STUL



STUL



Escofet
by Molins[®]

STUL

Escofet
by Molins[®]



1. Stool

STUL

Stul

Dimensions	Ø60 x 52 cm
------------	-------------

Weight	12 kg
--------	-------




1.1 General features

Material	Polyethylene HDPE	Fixing	Free-standing / Anchored
----------	-------------------	--------	--------------------------

Finish	Micro-textured	Performance	UV resistance and outdoors
--------	----------------	-------------	----------------------------

Flame retardant	Complies with the regulations euroclasses UNE-EN 13501-1:2019, classified as “E” in relation to its reaction to fire behavior.		
-----------------	--	--	--

Colours



RBN. White

RNG. Black
100% recycled

Color chart
standard *

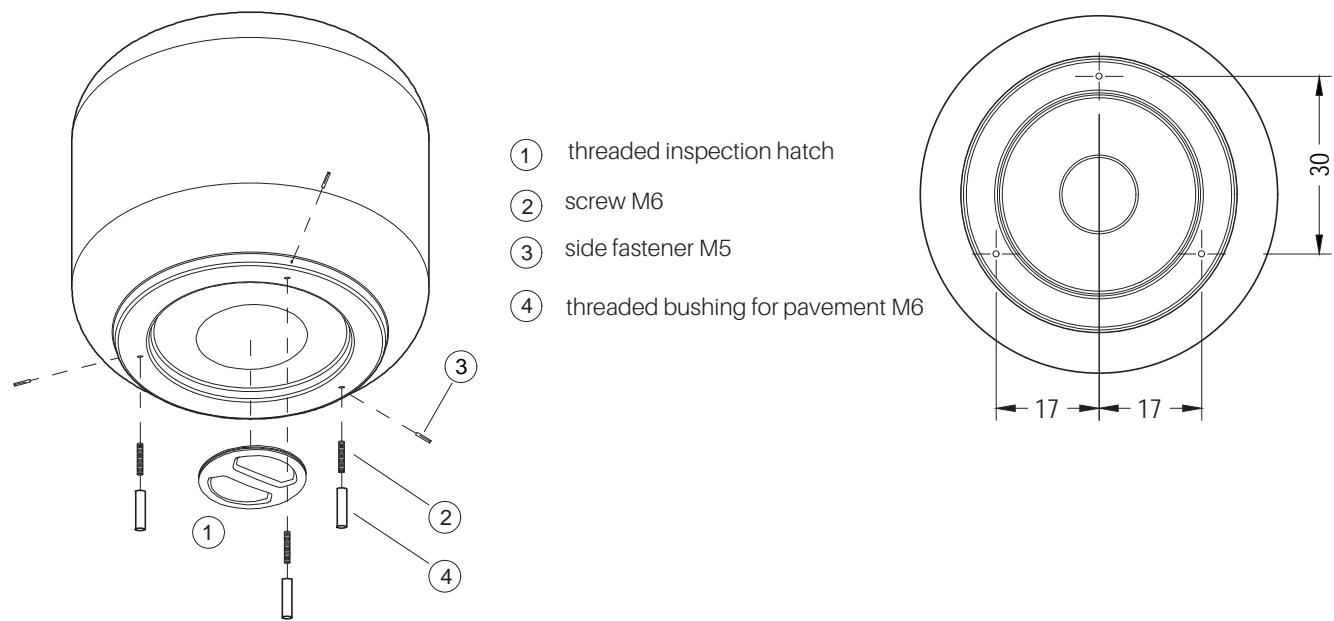
* Optional colour according to project

1.2 Installation system

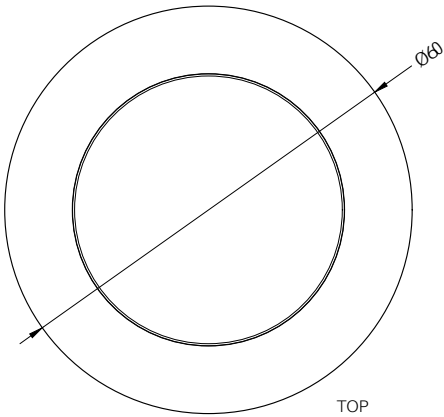
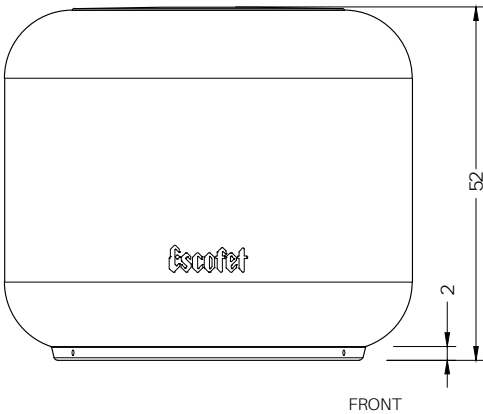
Hoisting
(W=12 kg)

Installation

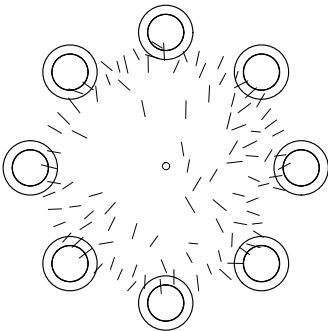
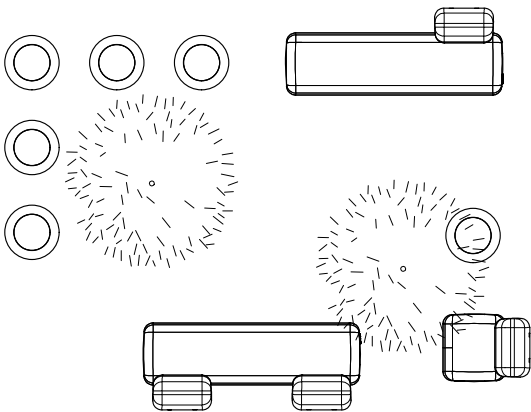
1. Indoor: free-standing
2. Outdoor: Hidden and Removable anchored: Screw the M6 screws into the bushing supplied. Place the bushing+screw kit in the existing holes in the bench. Screw in 3 M5 side fasteners until the M6 screw is tight. Rotate the bench, mark the position. Drill holes in pavement (Ø20), fill with resin or fat mortar and place the bench. Optionally, to gain weight, the customer can ballast it with sand.



Stul



Agreggation





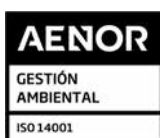
The names, trademarks and industrial models of the products have been logged in the corresponding registers. The technical information provided by Escofet about its products can be modified without prior notice.

Escofet 1886 S.A
Oficina central y producción

Montserrat, 162
E 08760 Martorell
Barcelona - España
T. 0034 937 737 150
F. 0034 937 737 151

info@escofet.com
www.escofet.com

Escofet
by **Molins**®



GA-2005/0072



SST-0090/2010



ER-0403/2016

