

The TIERS collection is a modular system of benches and tables at three different heights that promotes versatility and elegance in the urban landscape. It consists of a bench, a table/seat, a high table, and a low stool. The elements, made of UHPC-Slimconcrete, can be installed in various configurations to encourage socializing, relaxation, or work.

UHPC |  220 cm/máx. |  300 kg/máx. |  5

 Update 04.09.2025



ORIGIN

Created in response to the demand for a new type of table and seat that enables the creation of unconventional meeting and seating spaces.

DESIGN

A horizontal cross-section with soft edges ensures comfort, grip, and drainage. This section connects to the vertical supports through a smooth transition between the vertical and horizontal surfaces of the support and seat. The spacing between supports doubles the length of the cantilevered seating surface, allowing a consistent distance between vertical supports in linear arrangements. Each module measures 220 cm in length to optimize transport within the width of a truck or container, fully utilizing the available cargo space.

VERSATILITY

The TIERS collection consists of a 45 cm bench, a 74 cm table/seat, a 105 cm high table, and a low stool. These three staggered heights offer unlimited versatility: table, support element or seat, high table, improvised standing meeting point, etc. The elements

can be arranged linearly or side by side, doubling the width of the table or seat. The stool protects visually impaired individuals from cantilevered edges when installed at the ends of linear elements.

MATERIAL

Monobloc elements made from a single piece of UHPC-Slimconcrete reinforced with stainless steel. Sandblasted and water-repellent, with a manually polished smooth finish on all visible horizontal surfaces.

INSTALLATION

Easy to lift and handle with slings, both tables and seats are self-supporting. All modules are anchored to the pavement using two threaded bolts in sockets embedded in the base of the supports.



TIERS



Escofet
by Molins[®]

TIERS



Escofet
by Molins[®]

TIERS



TIERS



1. Collection

Tiers	Bench	Table/Perch	High Table	Stool
Dimensions	220 x 45 x 45 cm	220 x 45 x 74 cm	220 x 45 x 105 cm	Ø40 cm x 45 cm
Weigh	214 kg	255 kg	300 kg	83 kg

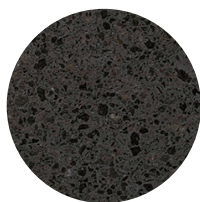
1.1 General features

Material	Concrete UHPC	Fixing	Anchored with screws
Finish	Etched and plumbed		

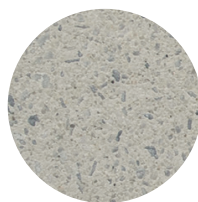
Colours



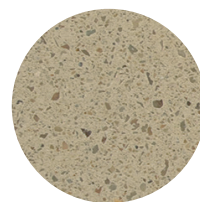
UHPC GR. Grey



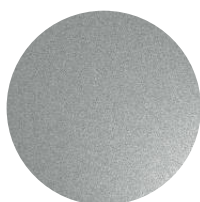
UHPC NG. Black



UHPC BL. White



UHPC BG. Beige



A. Stainless Steel

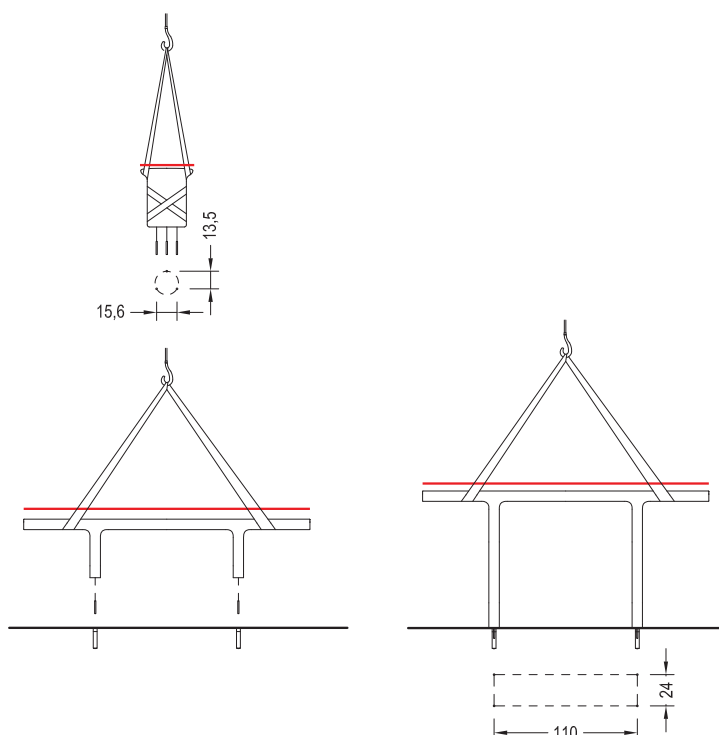
1.2 Placment system

Hoisting

P=214 kg/ 255 kg/ 300 kg / 83 kg

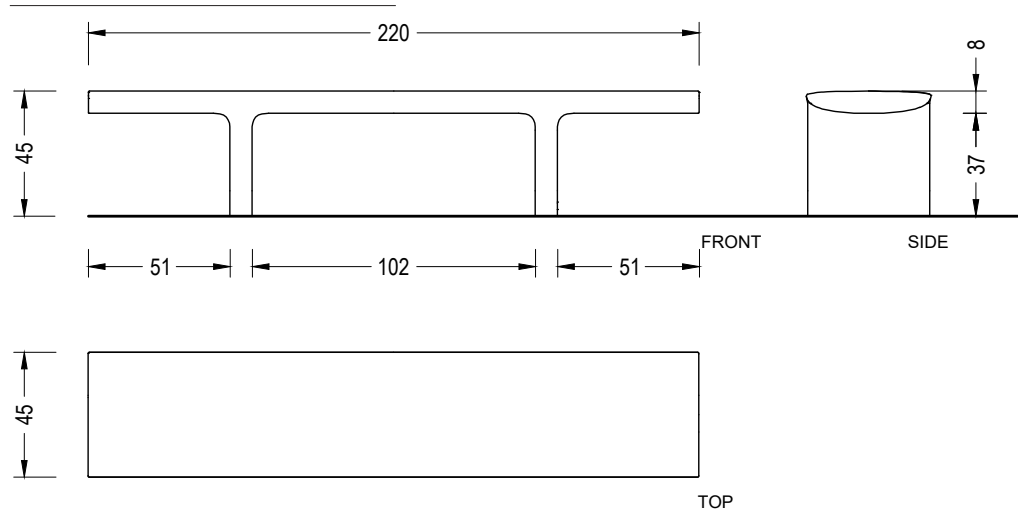
Installation

Drill the pavement Ø40x180 mm and fill with resin or liquid mortar. Screw in the 4 screws depth M16 x 140 mm; center, place the bench and repoint the support area.

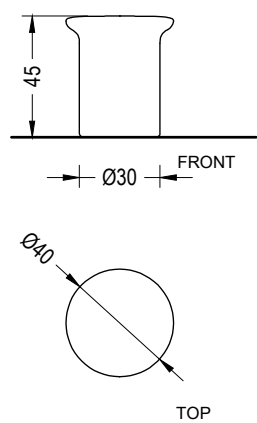


(*) The smooth polished finish is applied only on the upper surface (see red line).

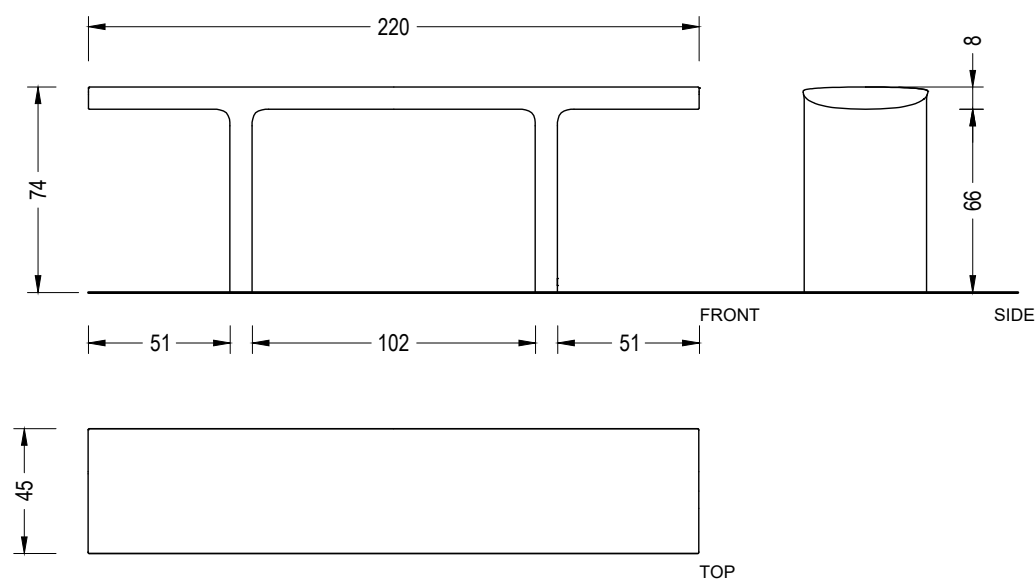
Bench



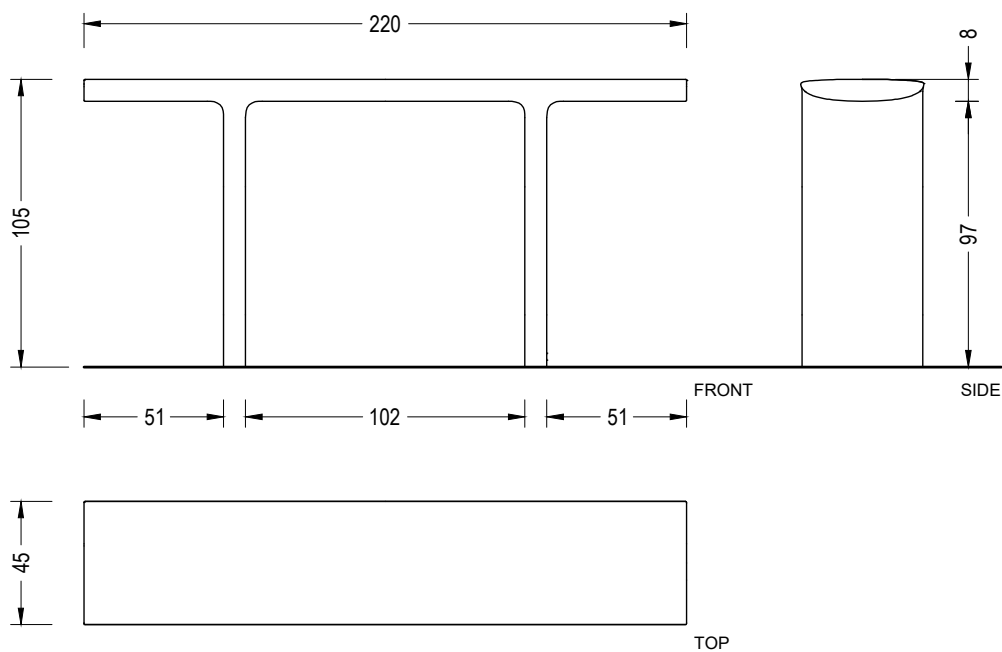
Stool



Table/Perch



High Table



TIERS



Escofet
by Molins[®]



Warranty

5 years of warranty in concrete elements.

The names, trademarks and industrial models of the products have been logged in the corresponding registers. The technical information provided by Escofet about its products can be modified without prior notice.

Escofet 1886 S.A
Head office and production

Montserrat, 162
E 08760 Martorell
Barcelona - España
T. 0034 937 737 150
F. 0034 937 737 151

info@escofet.com
www.escofet.com

Escofet
by **Molins**



GA-2005/0072



SST-0090/2010



ER-0403/2016

