




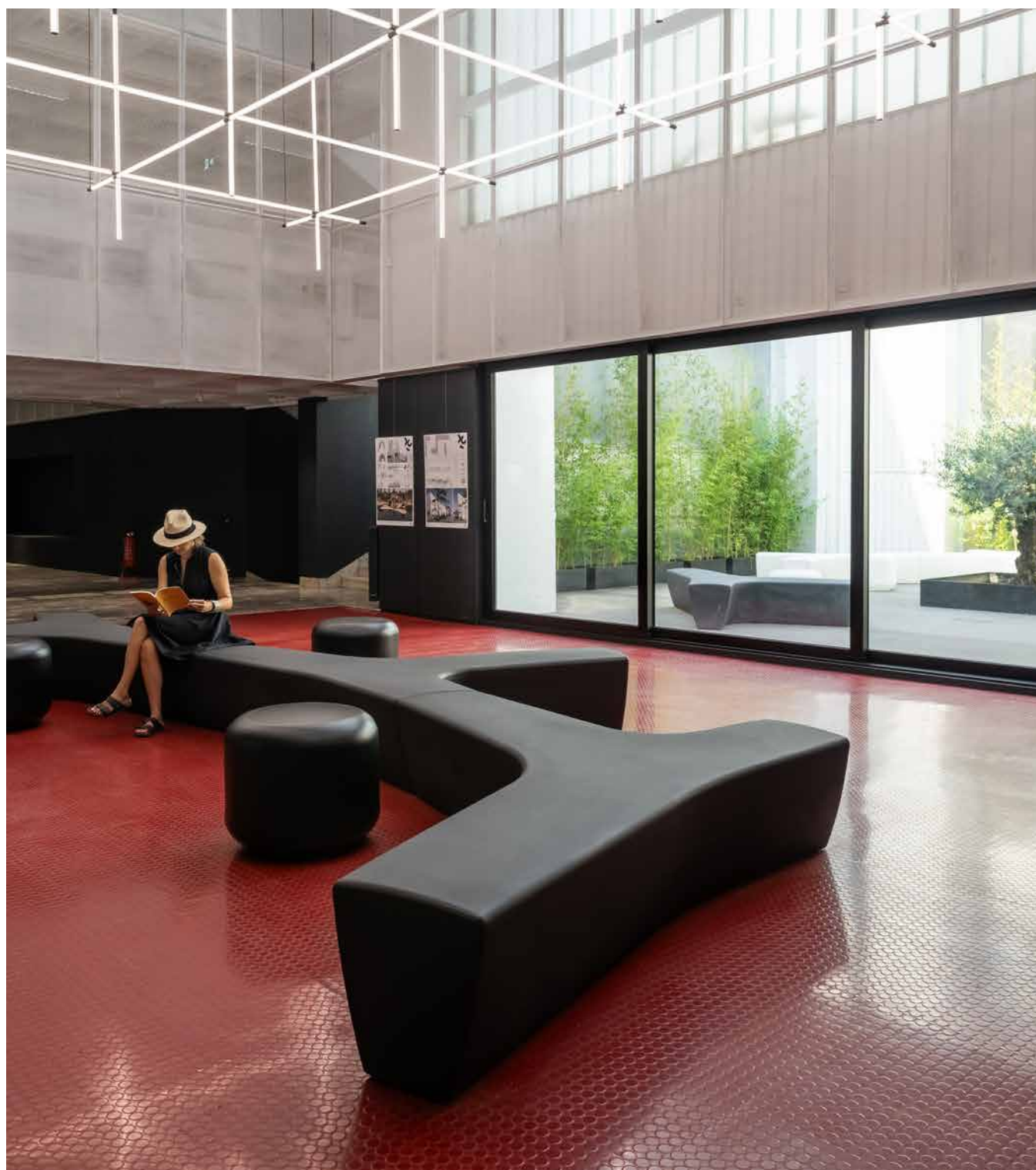
TWIG AIR

TWIG AIR is a backless bench system that embodies the concepts of modularity, fluidity, connection and interactivity with its users. Its organic formation, based on a single model with three arms, allows for the creation of indoor and outdoor “conversational landscapes”, or can be combined with the concrete Twigs. The Air Collection version is highlighted due to its lightness, the wide color palette and the possibility of incorporating a LED lighting kit.

Polyethylene HDPE |  237 cm |  61 kg |  6

Add-ons: LED

 Update 03.07.2025



Alexander Lotersztain 2009

ORIGIN

It is a remake of the original model designed for the campus of the Southbank Institute of Technology in Brisbane, Australia

MODULAR

The corners of its three arms have the same geometry and cross-section, thus favouring the aggregation of parts in an organic, free and even arbitrary manner. This gives rise to the generation of different compositions and the combination of concrete and plastic modules.

RECYCLED AND RECYCLABLE

It is monomaterial and 100% recyclable. The option in black color is 100% recycled, and consequently it is an environmentally sustainable product.

NON-POROUS

The peculiarity of non-porous HDPE material means that its surface is easy to wash with pressurised water and a degreasing de-

tergent that contains surfactants. It is disinfected with a hydro-alcoholic solution.

MATERIAL

Made with rotomolded HDPE polyethylene, it's available in a wide variety of colors.

This material offers great strength and durability, however, it is possible that they may suffer slight deformations over time in cases of prolonged exposure to the sun, high temperatures or intensive use. These variations do not compromise the functionality of the product.

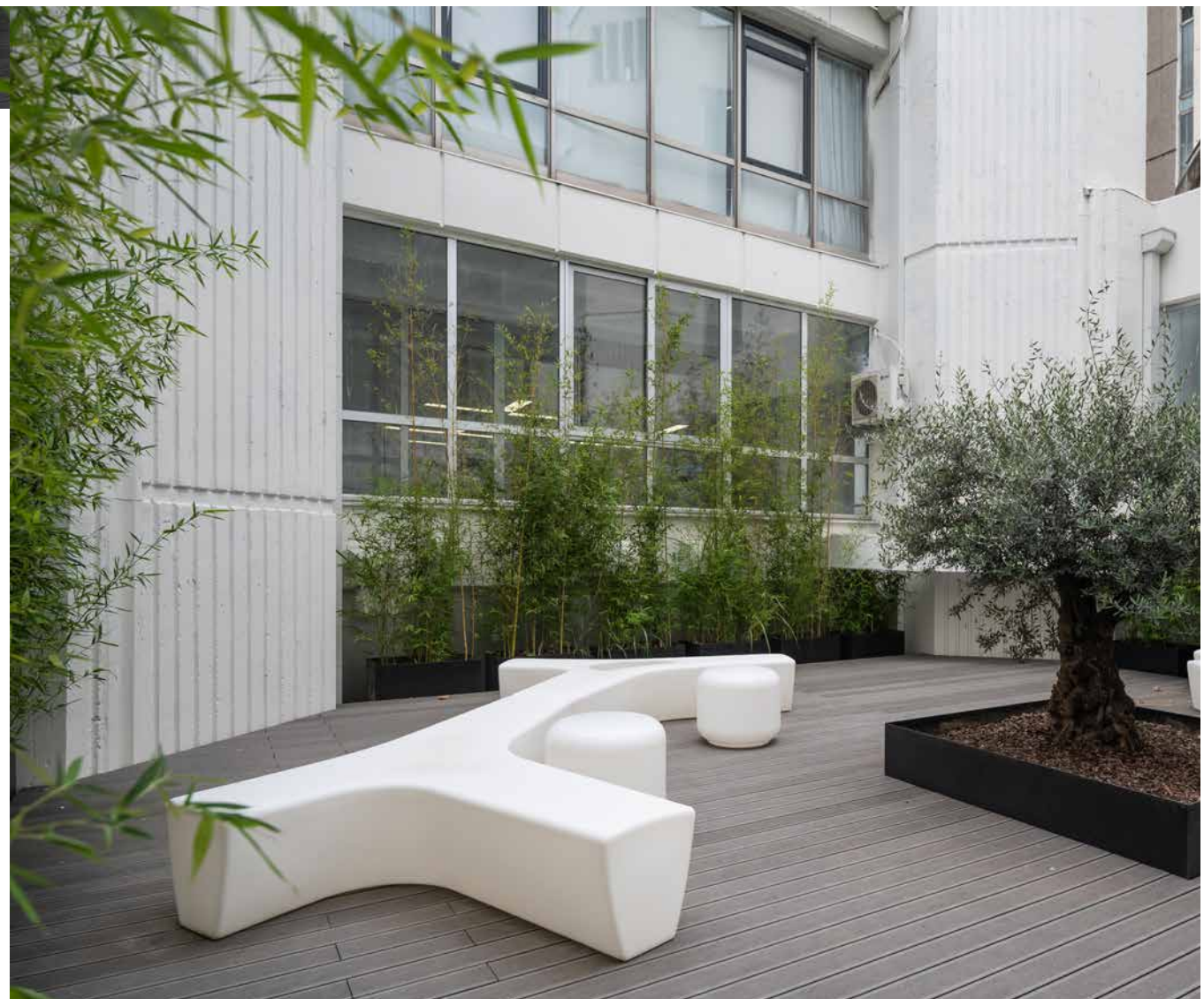
With a threaded inspection chamber cover permitting access to the interior.

INSTALLATION

Can be installed on the paving, and anchored, if required, using a hidden and removable system. Its rounded ends permit the installation of continuity modules, with no specific requirements in terms of precision.



TWIG AIR

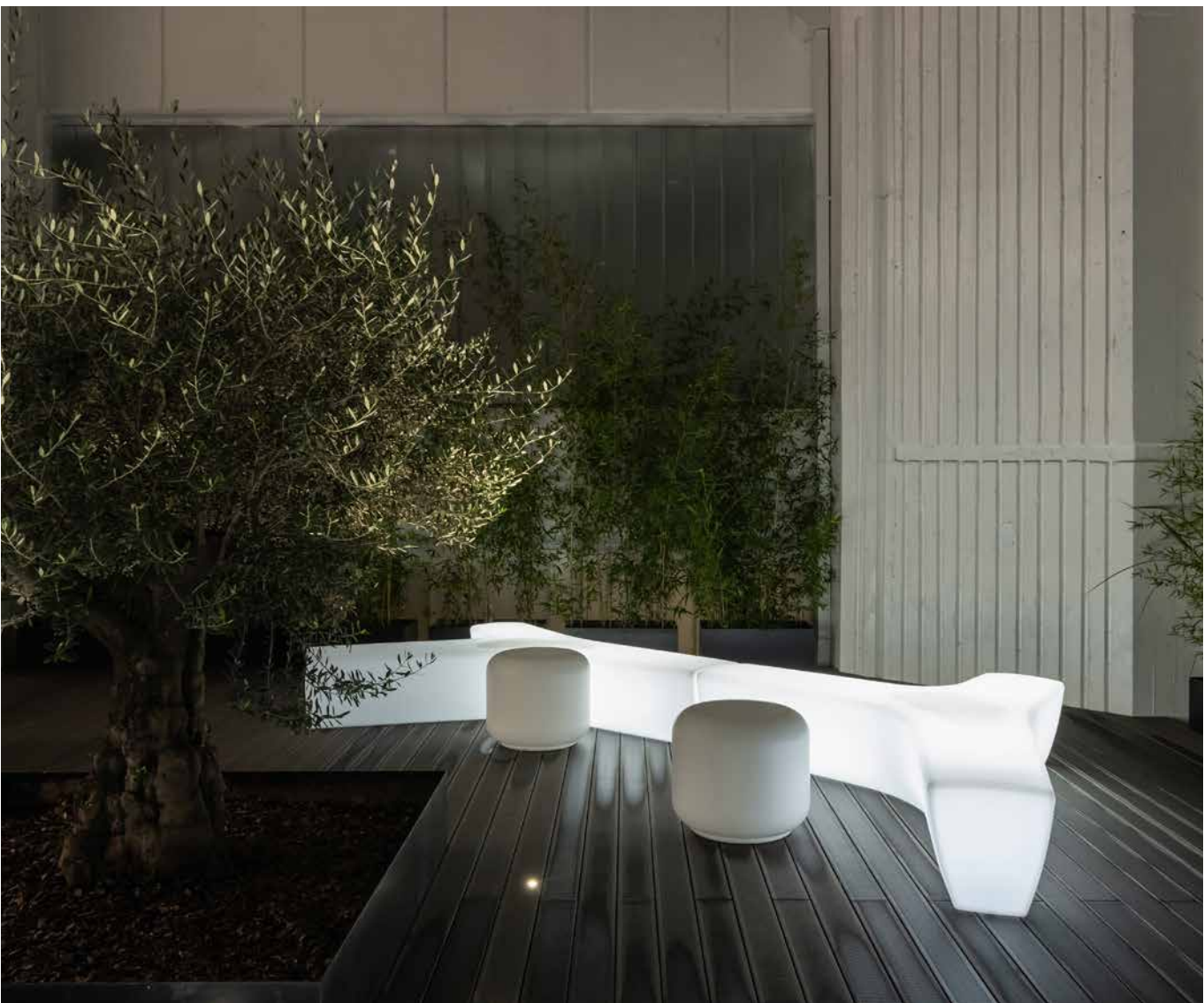


Escofet
by Molins^o

TWIG AIR



Escofet
by Molins[®]



TWIG AIR



Escofet
by Molins[®]

1. Bench

| Twig Air | | Twig Air | Twig Air Backrest |
|----------------------|--|-------------------|-------------------------------|
| Dimensions | | 237 x 193 x 46 cm | 237 x 193 x 46 (79) cm |
| Weight | | 53 kg | 61 kg |
| Iluminación | 3 profiles LED. 8-15W/m 4000° K / 3000° K Only available in white | | |
| 1.1 General features | | | |
| Material | Polyethylene HDPE | Fixing | Free-standing / Anchored |
| Finish | Micro-textured | Performance | UV resistance and outdoors |
| Flame retardant | Complies with the regulations euroclasses UNE-EN 13501-1:2019, classified as “E” in relation to its reaction to fire behavior. | | |

Colours



RBN. White



RNG. Black
100% recycled



Color chart
standard *

* Optional colour according to project

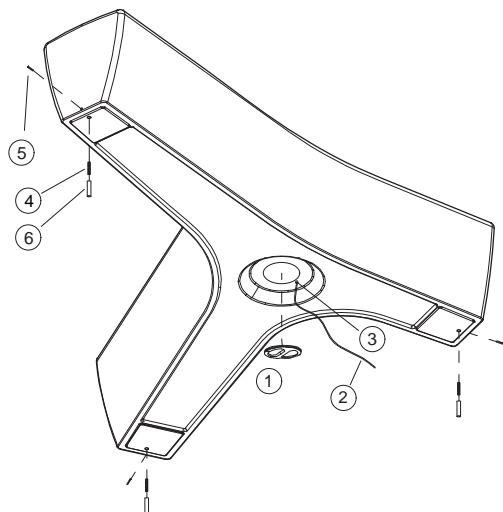
1.2 Installation system

Hoisting

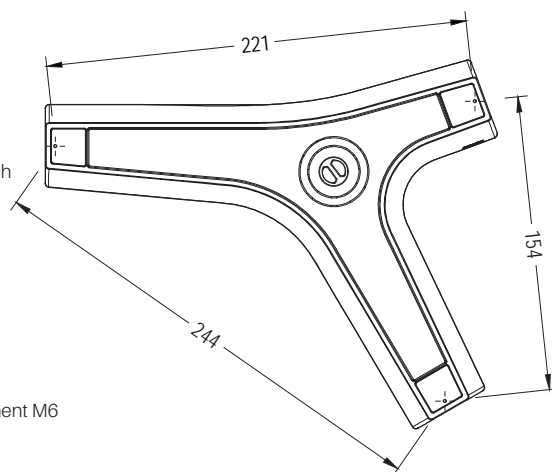
(W=53 kg / 61 kg)

Installation

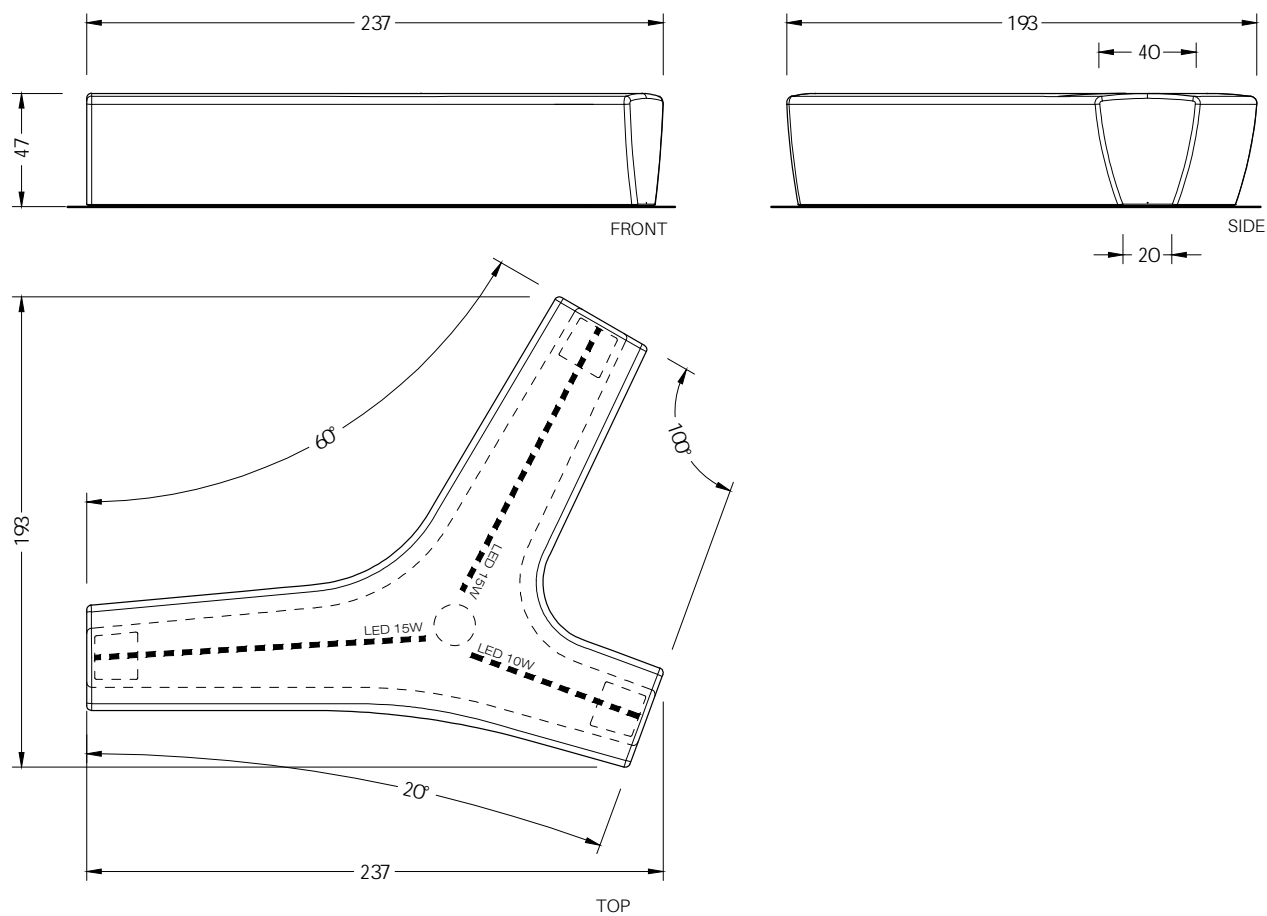
- Indoor: free-standing
- Outdoor: Hidden and Removable anchored: Screw the M6 screws into the bushing supplied. Place the bushing+screw kit in the existing holes in the bench. Screw in 3 M5 side fasteners until the M6 screw is tight. Rotate the bench, mark the position. Drill holes in pavement (Ø20), fill with resin or fat mortar and place the bench. Optionally, to gain weight, the customer can ballast it with sand.



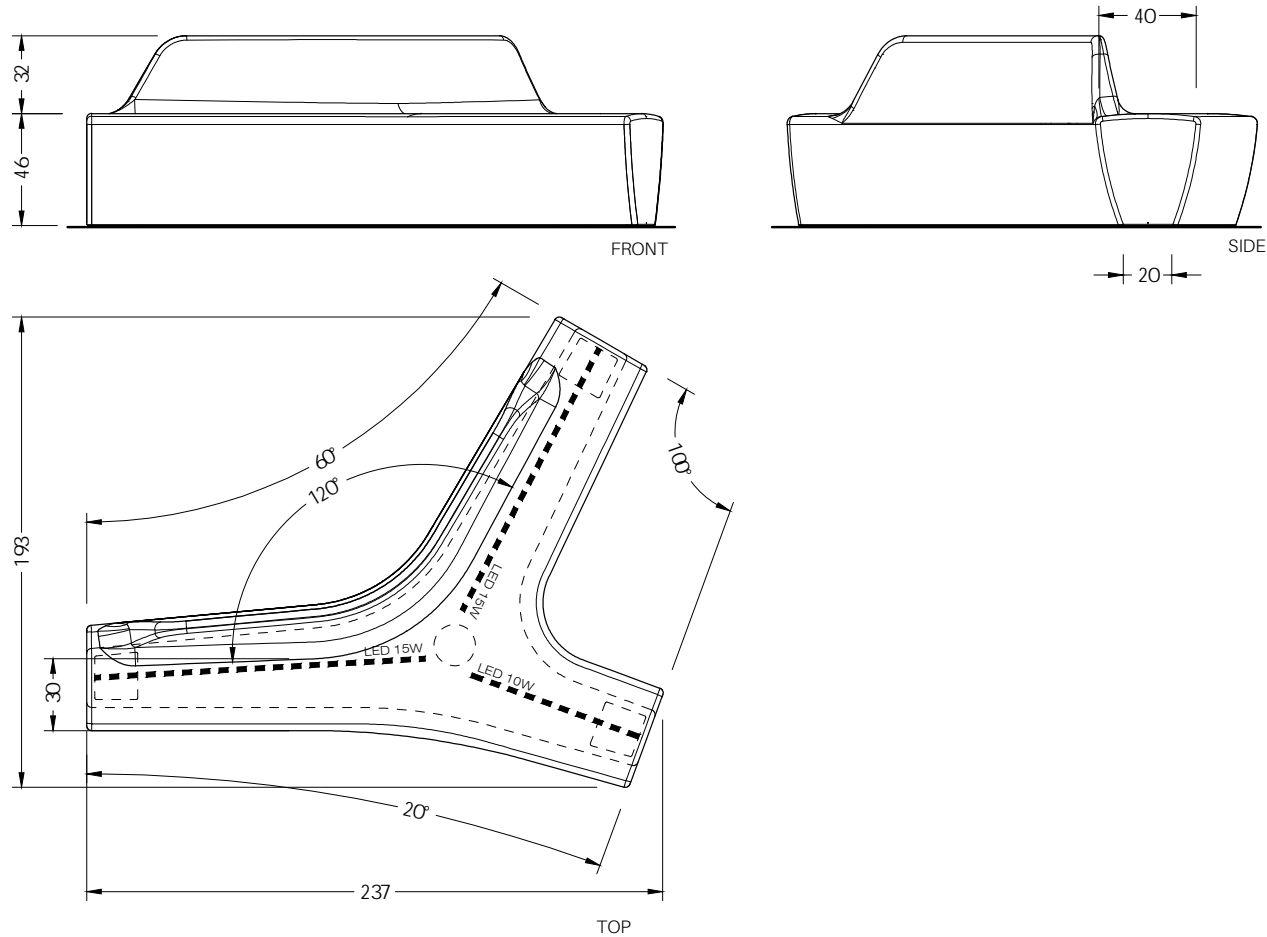
- 1 threaded inspection hatch
- 2 service lead
- 3 cable gland
- 4 screw M6
- 5 side fastener M5
- 6 threaded bushing pavement M6



Twig Air



Twig Air Backrest





Warranty

The warranty for this product is 3 years, in accordance with European Union legislation.

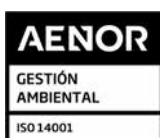
The names, trademarks and industrial models of the products have been logged in the corresponding registers. The technical information provided by Escofet about its products can be modified without prior notice.

Escofet 1886 S.A
Head office and production

Montserrat, 162
E 08760 Martorell
Barcelona - España
T. 0034 937 737 150
F. 0034 937 737 151

info@escofet.com
www.escofet.com

Escofet
by Molins[®]



GA-2005/0072



SST-0090/2010



ER-0403/2016

