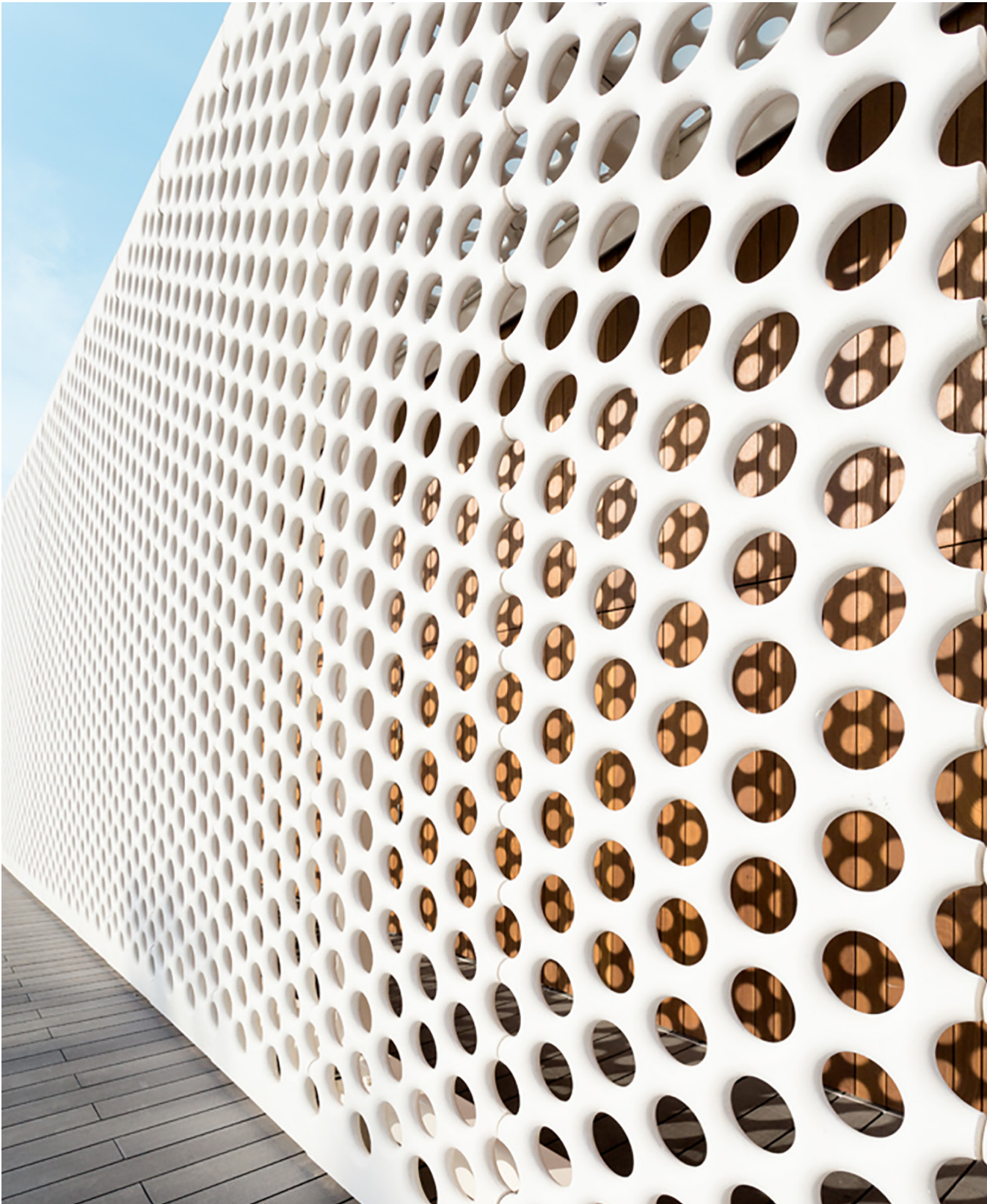


SCOB LATTICE reinterprets the architectural lattice as a shading system capable of regulating solar radiation and promoting natural ventilation. Inspired by the Mediterranean tradition of transitional spaces and harbour canopies, its modular UHPC system acts as an environmental filter that integrates shade, comfort and architecture.

UHPC Concrete |  467 cm/max |  460 kg

 Update 15.06.2026.



SCOB LATTICE

scob 2026

escofet
by Molins^o

ORIGIN

The design of the SCOB LATTICE screen and canopy system originates from the One Ocean Marina Port Vell buildings, located on Barcelona's waterfront. The research carried out for this project fostered a new line of innovation in architectural concrete, exploring its potential as a material for lightweight, permeable and highly expressive building envelopes.

DESIGN

Openwork panels with 40% perforation, rounded on the exposed face and flat on the upper surface, their slender profile recalls the traditional mashrabiya as a contemporary environmental filter. The modules can be installed using anchoring systems designed to meet different façade and canopy requirements. The design further explores the relationship between architecture and landscape that defines the Mediterranean environment.

MATERIAL

Panels manufactured in UHPC concrete and supported by stainless steel brackets, enabling seamless and virtually unlimited modular configurations while maintaining a lightweight appearance. The lattice panels are 60 mm thick and weigh approximately 77 kg/m².

INSTALLATION

When used as a vertical façade screen, SCOB LATTICE can be installed either fixed between floor slabs or suspended from the upper structure with a restraint point at the bottom. In both configurations, the fixing system is concealed within the edge of the panel, ensuring a clean and discreet integration into the architectural envelope.

The canopy solution is built using the same lattice modules. Unlike the façade application, the panels are fixed directly to the supporting substructure.



SCOB LATTICE

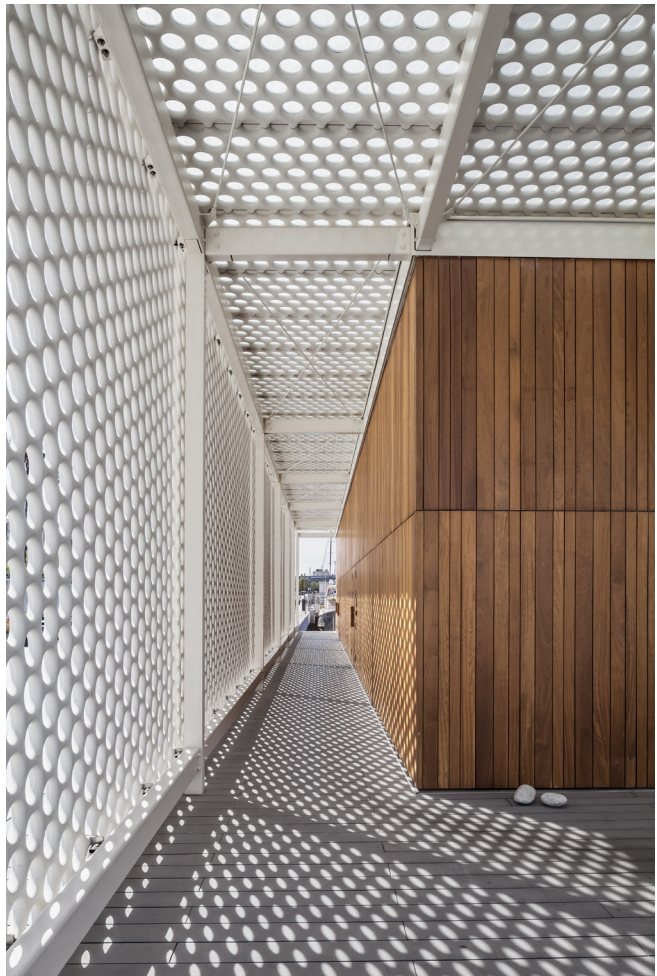


SCOB LATTICE



The SCOB LATTICE screen acts as a contemporary solar filter that optimises natural daylight while reducing direct solar radiation, minimising the need for mechanical cooling.

Thanks to its geometry and separation from the building envelope, it promotes air circulation between both surfaces, creating a ventilated cavity that contributes to the passive thermal regulation of the building. Manufactured in UHPC and based on a modular design, it combines durability, visual lightness and energy efficiency within a single construction system.



1. Collection

LATTICE	Office	Residential	Pergola
Dimensions	467 x 124 x 6 cm	341 x 124 x 6 cm	251 x 124 x 6 cm
Weight	460 kg	336 kg	240 kg

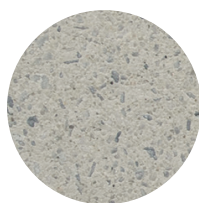
1.1 General features

Material	UHPC Concret	Fixing	According to the project
Finish	Etched and waterproofed		
Anchors	Stainless steel		

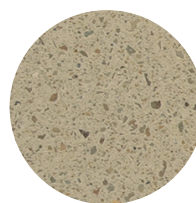
Colores



UHPC GR. Grey



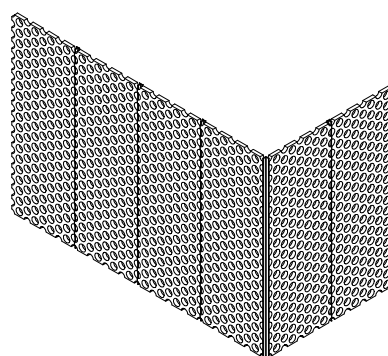
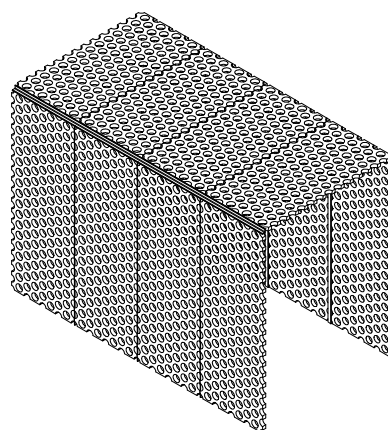
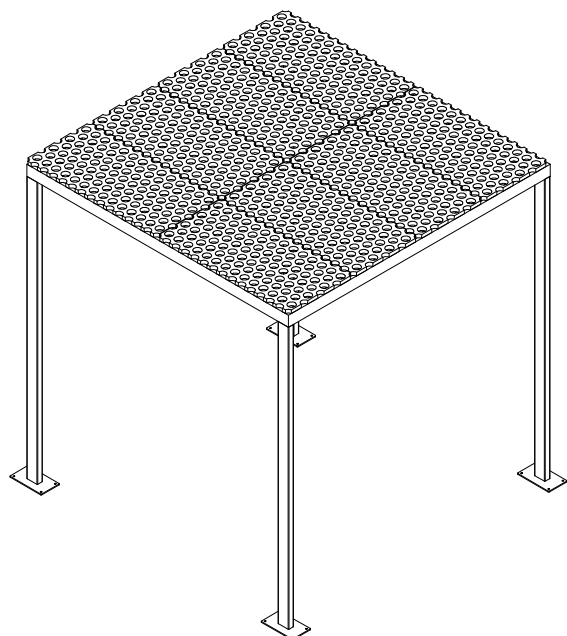
UHPC BL. White



UHPC BG. Beige

1.2 Agreggations

The supporting structure of SCOB LATTICE is adapted to the specific requirements of each project and must be defined by the responsible design team. Installation of the system requires the corresponding structural assessment and engineering calculations to ensure its proper performance and suitability for the intended conditions of use.





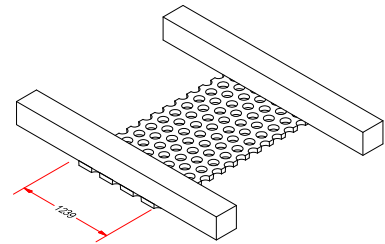
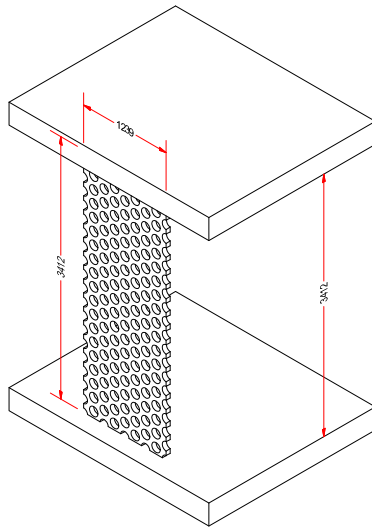
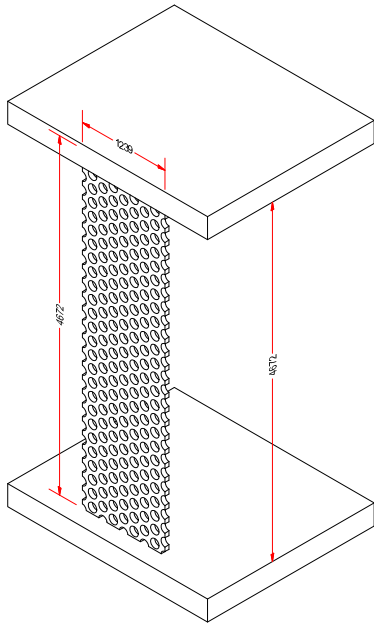
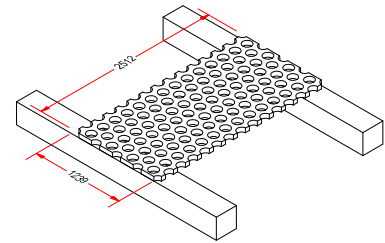
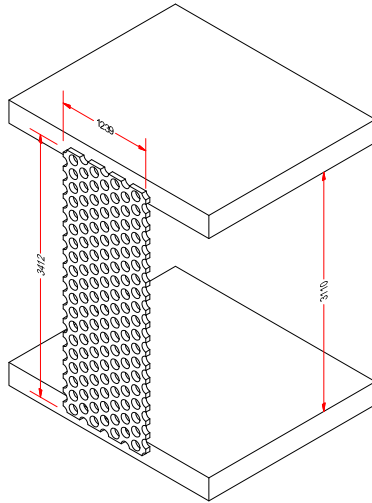
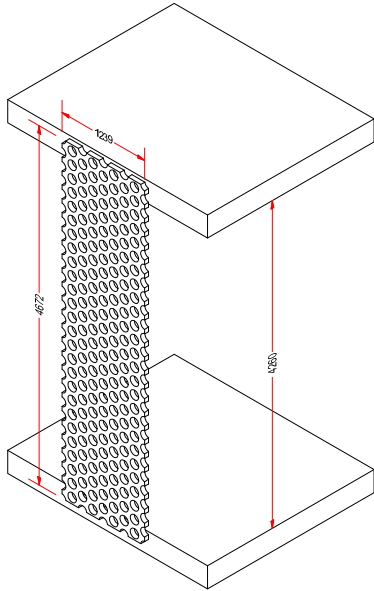
1.2 Installation system

Hoisting

W= 460 kg / 336 kg / 240 kg

Installation

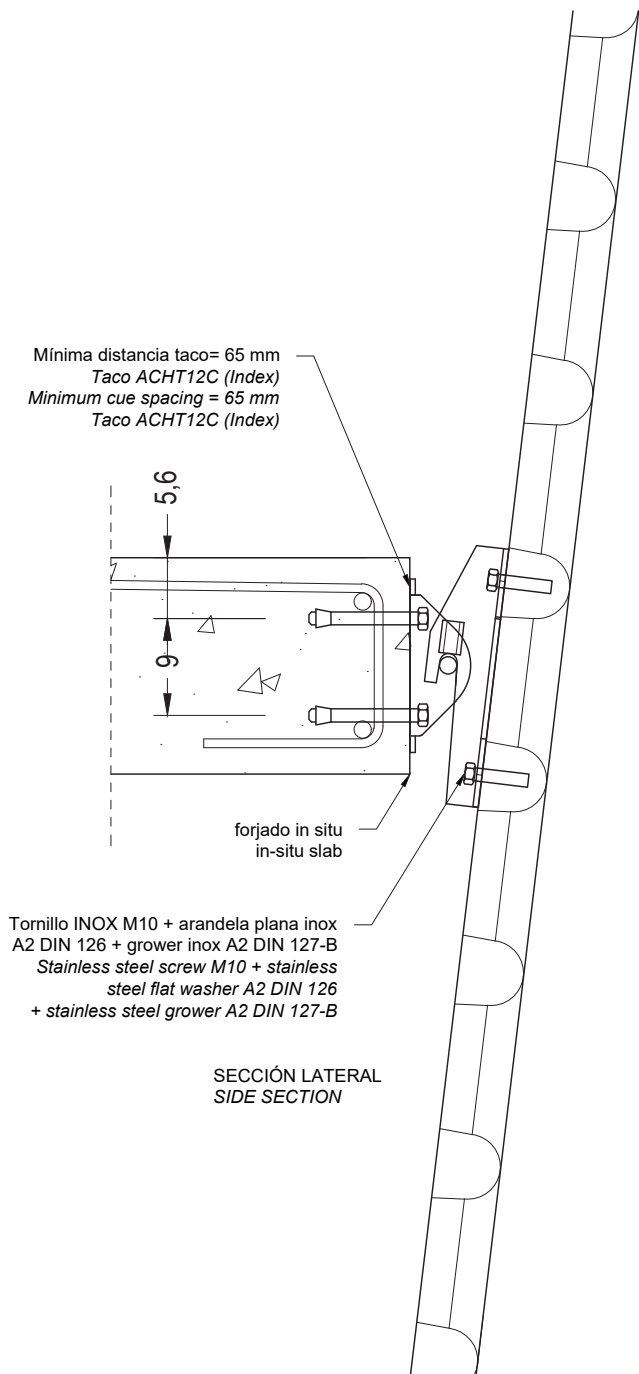
Bespoke project. See possibilities below:



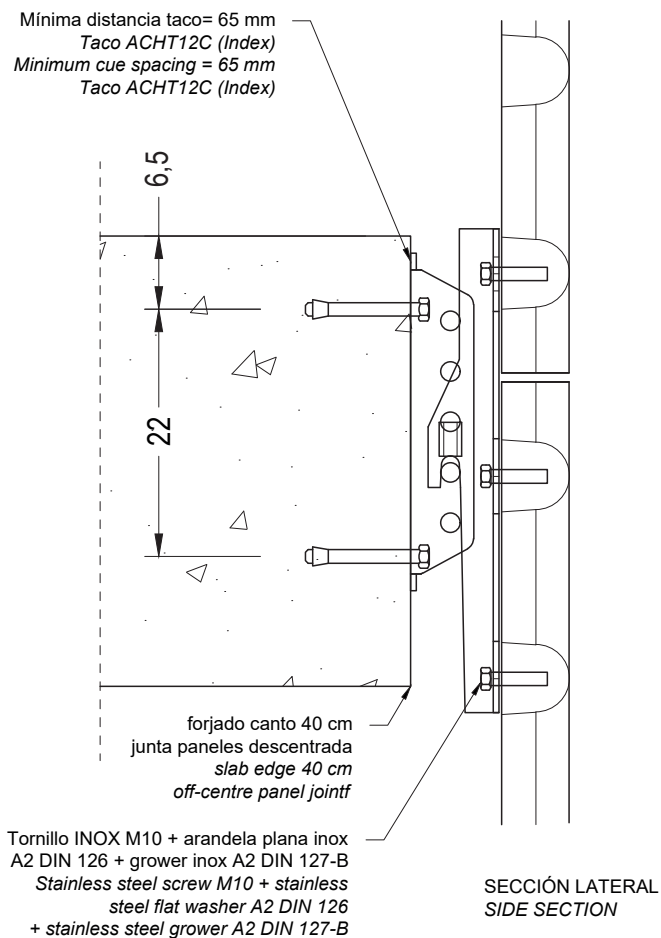
SCOB LATTICE

1.2 Installation system

Anchoring of two panels to the slab

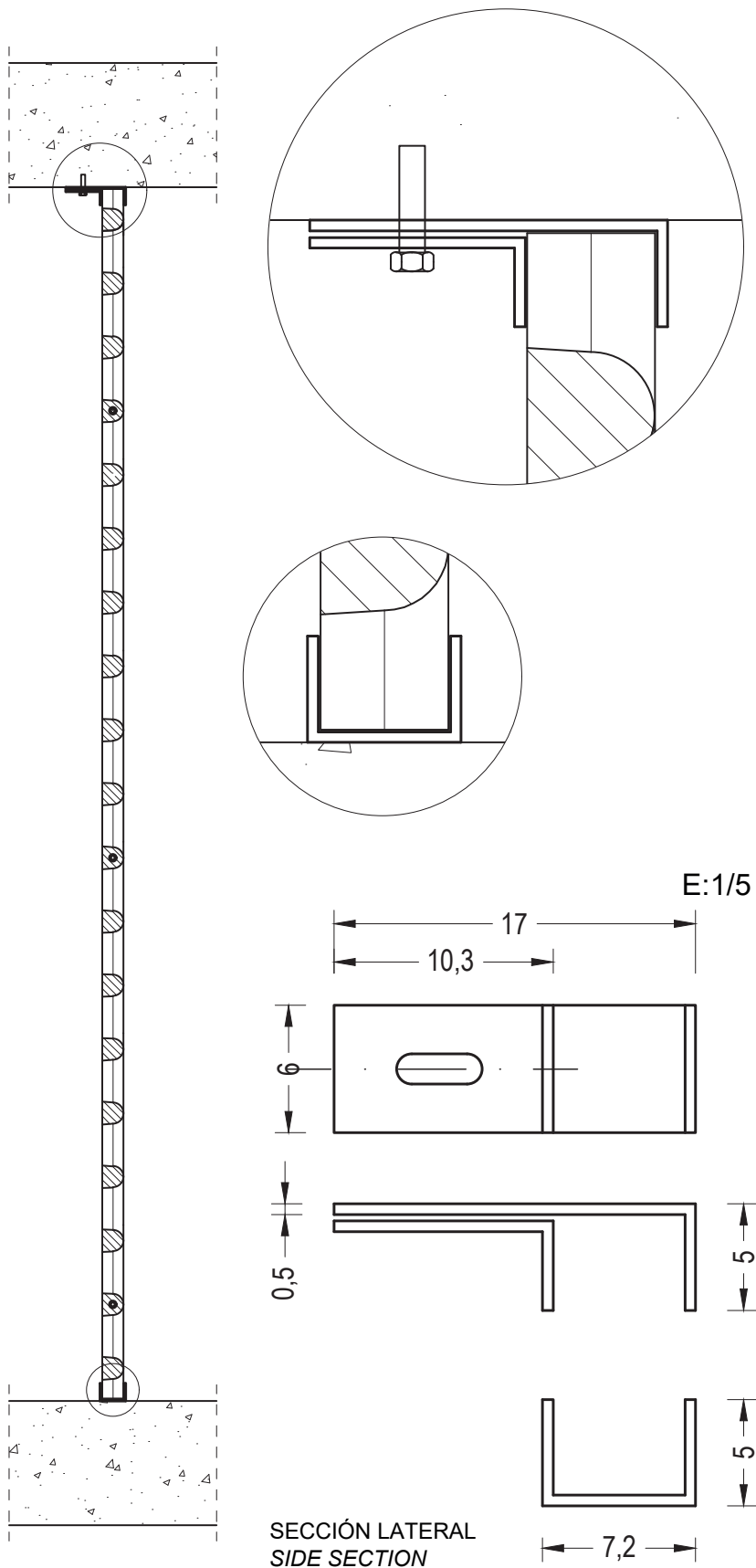


Adjustable anchoring of two panels to the slab



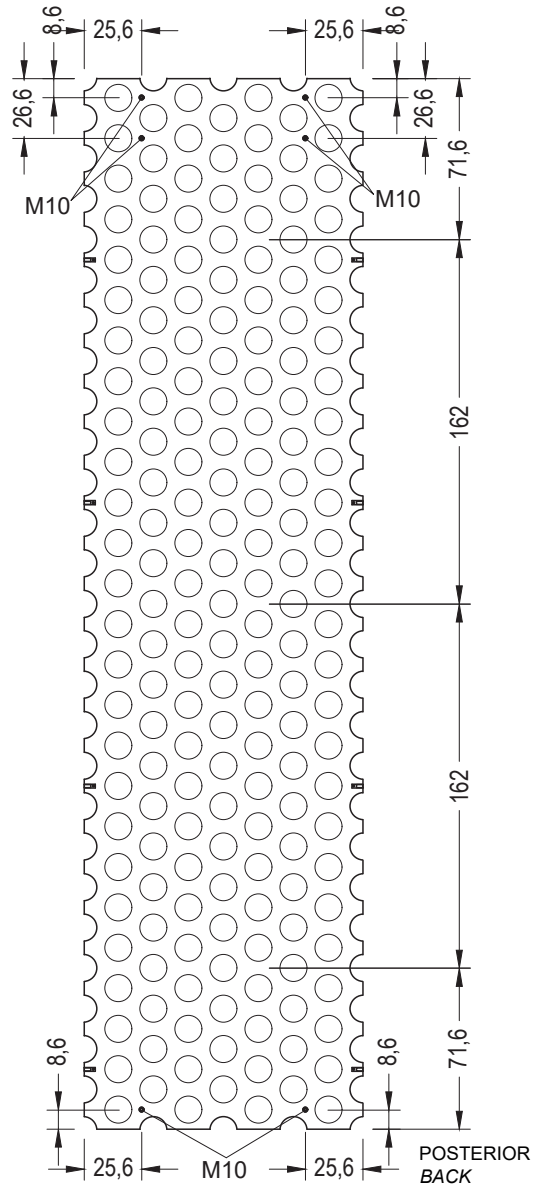
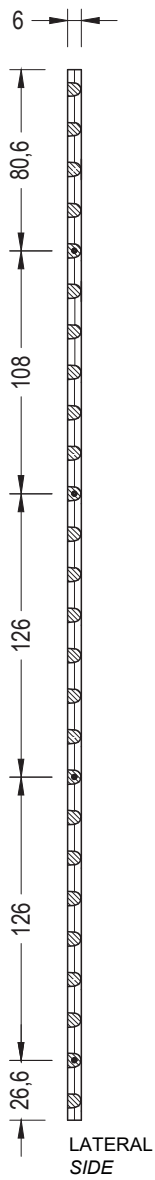
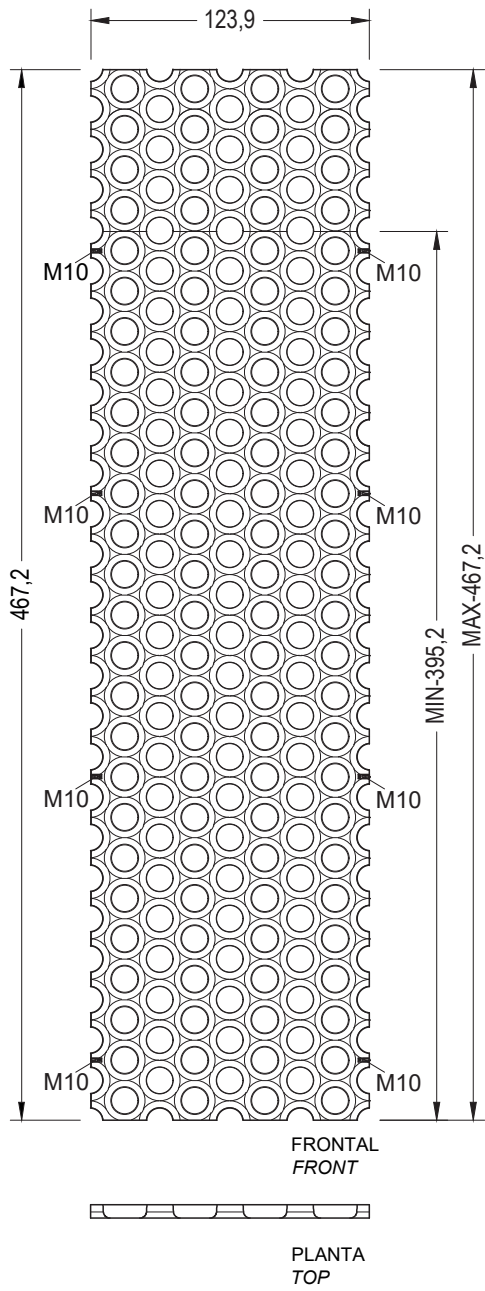
1.2 Installation system

Anchoring between floor slabs



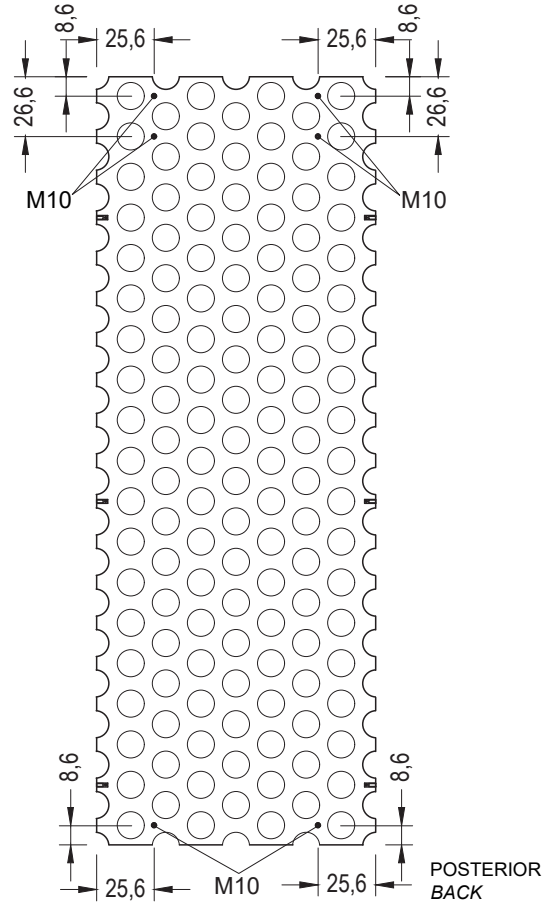
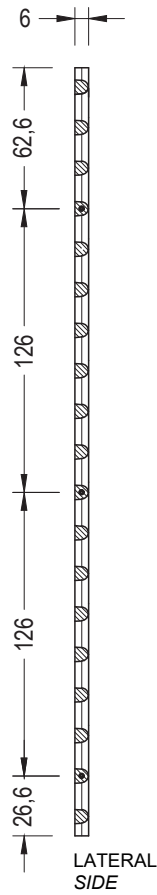
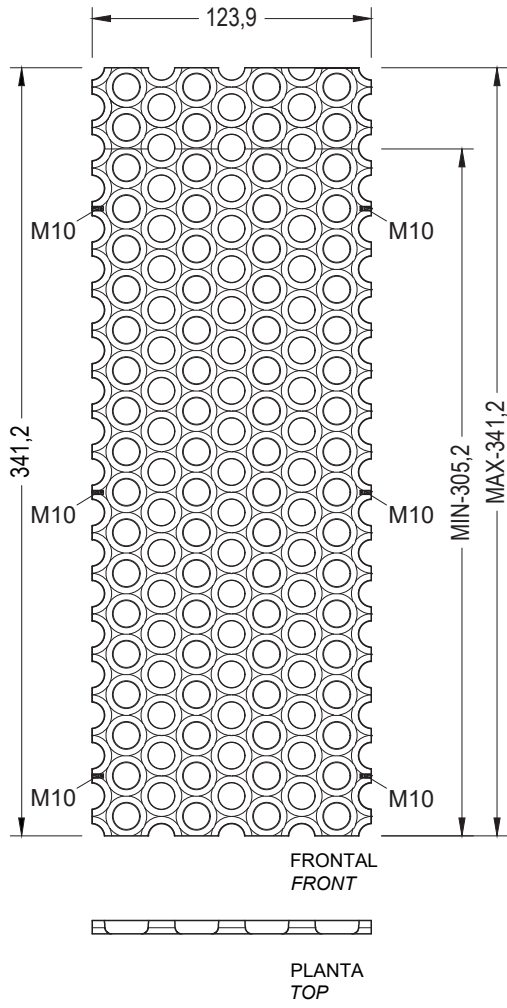
SCOB LATTICE

Office

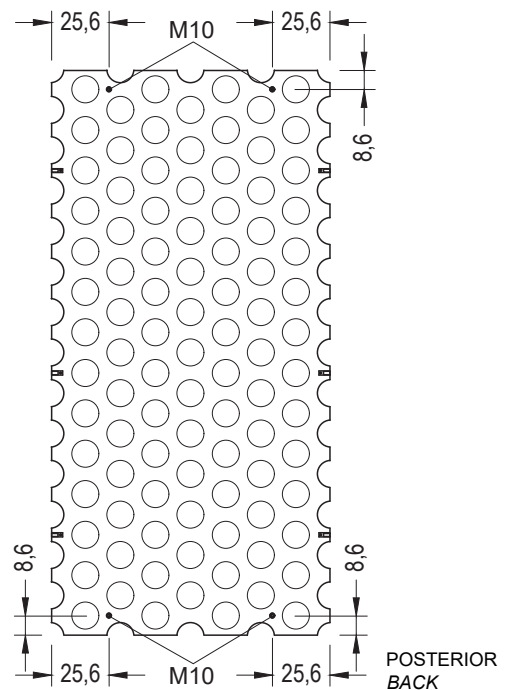
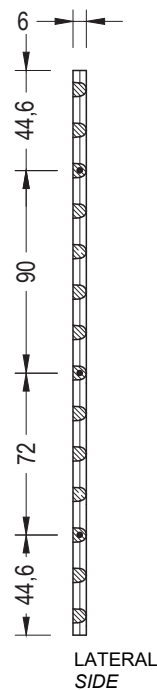
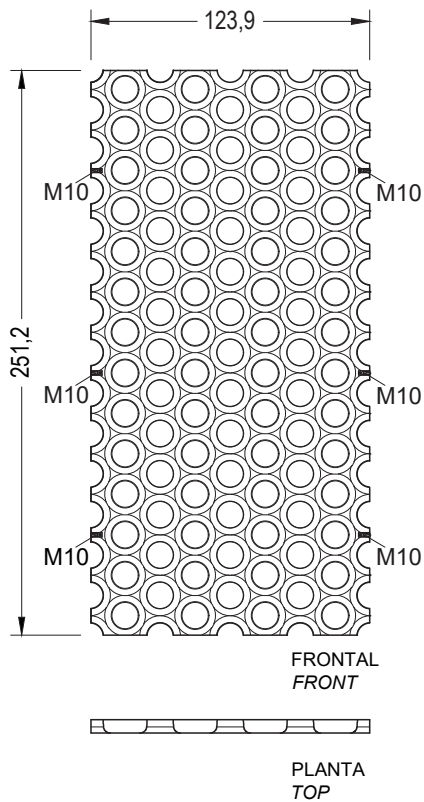


SCOB LATTICE

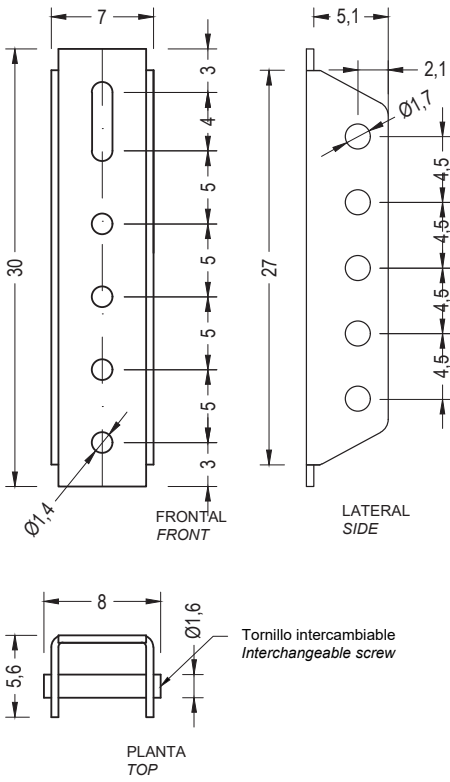
Residential



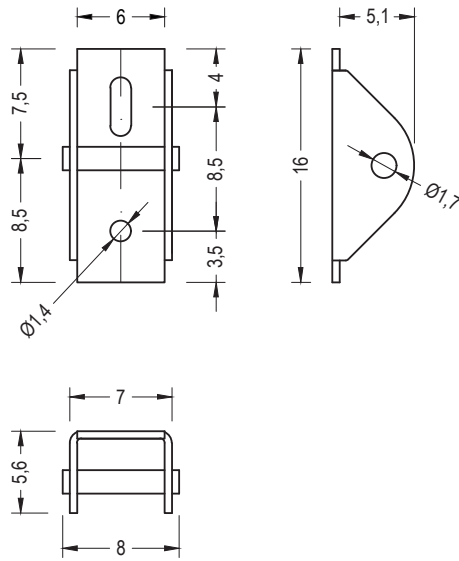
Pergola



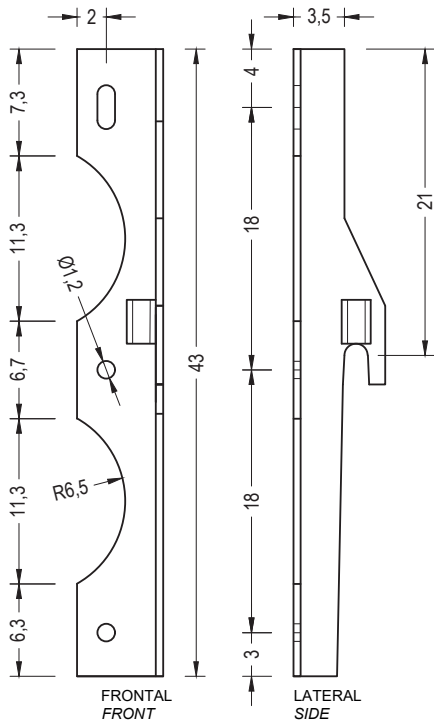
Adjustable anchoring to slab



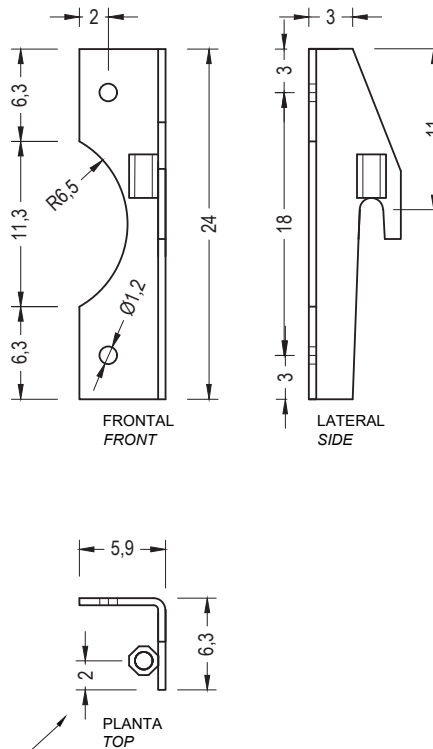
Anchoring to slab



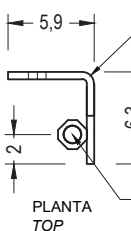
Central anchoring to panel



Top anchoring to panel



Disponible Izquierda y Derecha
Representado el izquierdo
Available Left and Right
Represented the left



Casquillo inox A2 HX10044 M12 L=30mm
+ espárrago M12 inox A2 Long aprox 40/45 mm



Warranty

5 years in concrete elements.

The names, trademarks and industrial models of the products have been logged in the corresponding registers. The technical information provided by Escofet about its products can be modified without prior notice.

Escofet 1886 S.A
Head office and production

Montserrat, 162
E 08760 Martorell
Barcelona - España
T. 0034 937 737 150
F. 0034 937 737 151

info@escofet.com
www.escofet.com

Escofet
by Molins[®]



GA-2005/0072



SST-0090/2010



ER-0403/2016

